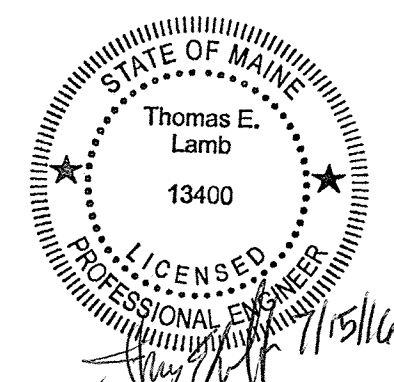
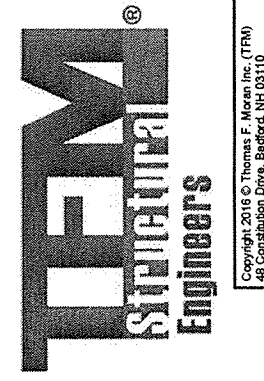
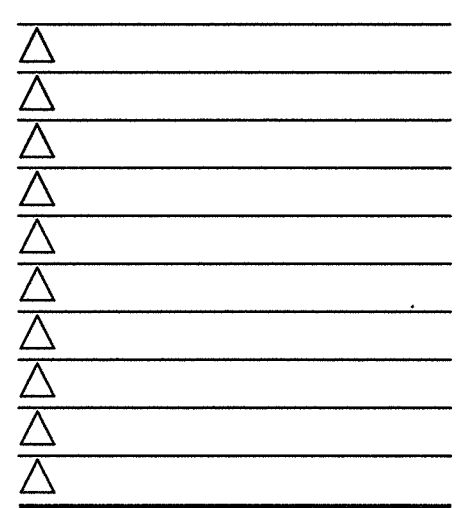


MARK D. MCCLUGGAGE AIA, CCS
 1626 E. Douglas Wichita, KS 67211
 Phone: (316) 268-8246
 Fax: (316) 268-8246
 www.dmv.com
 MAINS LIC. # ARC-2223

48 Constitution Drive
 Bedford, NH 03110
 Phone #: (603) 472-4888
 Fax #: (603) 472-8747
 www.dmv.com
 TPI Project #: 47216.00



15034.000



CONTRACT DATE: 07.15.2016
 BUILDING TYPE: CONVERSION
 PLAN VERSION: FEBRUARY 2015
 SITE NUMBER: XXX-XXX
 STORE NUMBER: XXXXX

TACO BELL
 1383 WASHINGTON AVE.
 PORTLAND, ME

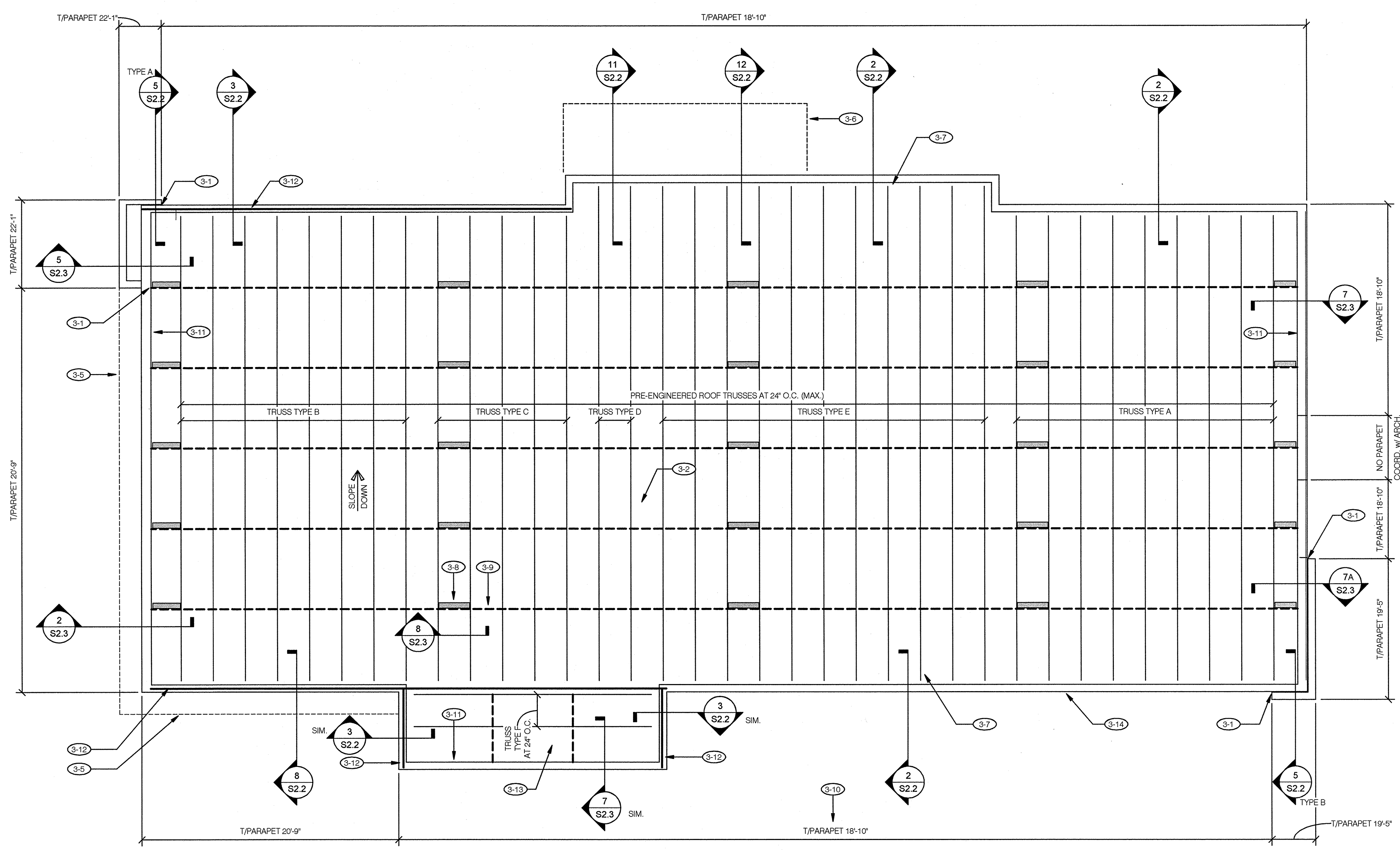


CONVERSION
 LIVE MAS - MEDIUM40

NEW ROOF
 FRAMING
 PLAN

S1.3

PLOT DATE: 07/15/16



RTU AND EQUIPMENT LOCATION, WEIGHTS, SIZES AND PENETRATIONS TO BE COORD. w/ ENGINEER, ARCHITECT, MEP AND TRUSS FABRICATOR PRIOR TO CONST. AND TRUSS FABRICATION.

NOTE: TRUSS SPACING CAN BE INCREASED IF 2x8 PARAPET MEMBERS ARE USED. G.C. AND TRUSS MANUF. TO COORD. w/ ARCHITECT AND ENGINEER

NOTE: EXTREME CARE SHALL BE USED IN ERECTING ROOF TRUSSES - COMPLY WITH TPI BRACING REQUIREMENTS.

NOTE: ROOF NOT DESIGNED FOR PONDING, SEE ARCHITECTURAL DRAWINGS FOR DRAIN REQUIREMENTS.

NEW ROOF FRAMING PLAN 1/4"=1'-0" A

NAILING SCHEDULE		
TYPE	NAILING/ LOCATION	COMMENTS
BN	10d AT 6"o.c.	N/A
EN	10d AT 6"o.c.	N/A
FN	10d AT 12"o.c.	N/A

- NOTES:
- "BN" INDICATES ROOF/ WALL BOUNDARY NAILING
 - "EN" INDICATES EDGE OF PANEL NAILING
 - "FN" INDICATES FIELD OF PANEL NAILING

- DO NOT SCALE THIS DRAWING.
- THE CONTRACTOR SHALL VERIFY ALL EXISTING CONDITIONS PRIOR TO CONSTRUCTION.
- ROOF SHEATHING: 3/4" PLYWOOD PANELS.
- THE TRUSS MANUFACTURER SHALL BE RESPONSIBLE FOR THE FINAL DESIGN AND LAYOUT OF TRUSSES, INCLUDING SHOP-DRAWINGS, CALCULATIONS, BRACING, AND CONNECTIONS.
- MAXIMUM WEIGHT AND APPROXIMATE LOCATION OF MECHANICAL UNITS TO BE USED IN THE DESIGN OF SUPPORTING MEMBERS ARE INDICATED ON THE PLANS. CONTRACTOR SHALL VERIFY ALL INFORMATION PRIOR TO TRUSS FABRICATION.
- COORDINATE SIZE AND LOCATION OF ALL ROOF PENETRATIONS WITH ARCHITECTURAL AND MEP DRAWINGS.
- SEE TYPICAL TRUSS ELEVATION DETAIL ON "FRAMING SECTIONS" SHEET FOR TRUSS TYPES AND ADDITIONAL INFORMATION.
- SEE "GENERAL STRUCTURAL NOTES" SHEET FOR ADDITIONAL PROJECT AND WOOD FRAMING INFORMATION.

KEYNOTE LEGEND	
3-1	TOP OF PARAPET ELEVATION STEPS. SEE "TYPICAL CHANGE IN PARAPET/ TOP PLATE ELEVATION DETAIL" ON S2.3 SHEET.
3-2	PROVIDE (2)- 2x6 BLOCKING WITH SIMPSON U28-2 HANGERS. TYPICAL AT SUPPORT CURBS OF ALL ROOF TOP EQUIPMENT AND AT EDGES OF ALL ROOF OPENINGS.
3-5	DIAGRAMMATIC OUTLINE OF SLAT WALL BY OTHERS.
3-6	DIAGRAMMATIC OUTLINE OF ALUMINUM CANOPY BY OTHERS.
3-7	SIMPSON H2.5A HURRICANE TIE, TYPICAL AT EACH END OF ROOF TRUSSES AND ROOF RAFTERS.
3-8	PROVIDE CONTINUOUS 2x4 BRIDGING ON TOP OF BOTTOM CHORD OF ROOF TRUSSES. ROWS OF CONTINUOUS BRIDGING ARE SHOWN SCHEMATICALLY AT 5'-0"o.c. MAXIMUM FOR BIDDING PURPOSES. ACTUAL SPACING SHALL BE AS SPECIFIED ON THE APPROVED TRUSS SHOP DRAWINGS.

KEYNOTE LEGEND	
3-9	PROVIDE DIAGONAL BRACING AT 20'-0"o.c. MAXIMUM ALONG ROWS OF CONTINUOUS BRIDGING. SEE "TYPICAL BOTTOM CHORD BRIDGING BRACING DETAIL" ON "FRAMING SECTIONS" SHEET.
3-10	TOP OF PARAPET EL. = TOP OF DOUBLE TOP PLATE. COORD. w/ ARCHIT. DRAWINGS.
3-11	PROVIDE DIAGONAL BRACING AT WALLS PARALLEL TO TRUSSES. SEE SECTIONS FOR BRACING SIZE, SPACING, AND CONNECTIONS.
3-12	NEW CONTINUOUS (3) 1 3/4" x 11 1/4" 2.0E MICROLAM LVL BEAM OVER EXIST. OPNGS. SEE PLAN FOR SPAN LENGTHS.
3-13	FLAT ROOF FRAMING WITH TAPERED INSULATION. COORD. w/ ARCHIT.
3-14	CONTRACTOR SHALL VERIFY ALL WALL FRAMING DIMENSIONS w/ ARCH. DWGS. PRIOR TO CONSTRUCTION.

NOT USED F

ROOF NAILING SCHEDULE E

FRAMING PLAN NOTES D

KEYNOTES B