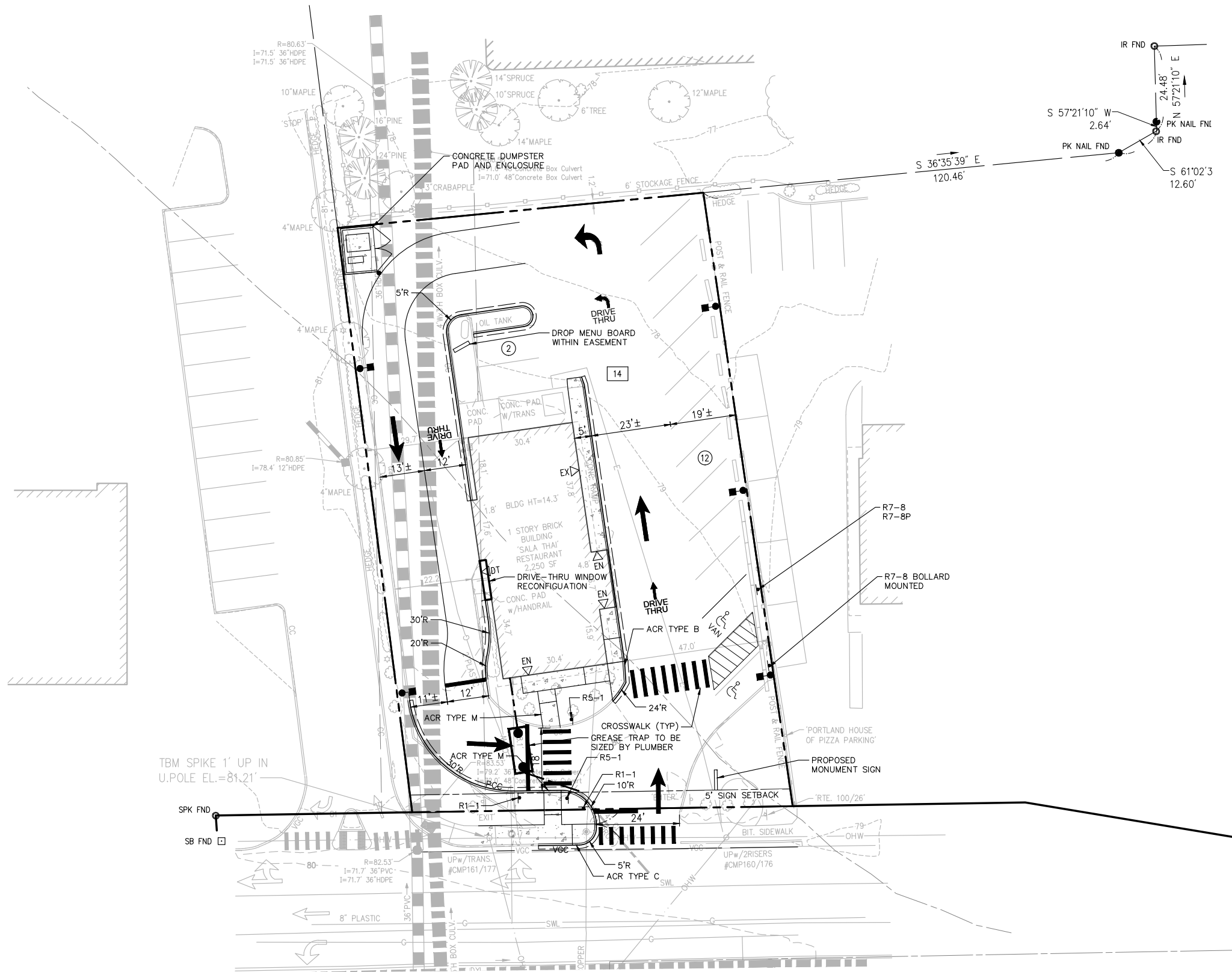




# SITE PLAN



| PRODUCT LIST                          |      |      |                       |
|---------------------------------------|------|------|-----------------------|
| SQ. FT.                               | QTY  | ITEM |                       |
| <b>EXTERIOR BUILDING SIGNS ONLY</b>   |      |      |                       |
| <b>A</b>                              | 13.3 | 3    | SWINGING BELL (LED)   |
| <b>B</b>                              | 12.1 | 3    | LETTER SETS           |
| <b>EXTERIOR BUILDING PRODUCT ONLY</b> |      |      |                       |
| <b>C</b>                              | N/A  | 1    | ARCHITECTURAL ACCENT  |
| <b>D</b>                              | N/A  | 2    | SLAT WALLS            |
| <b>E</b>                              | N/A  | 3    | VALANCE SETS          |
| <b>F</b>                              | N/A  | 1    | DRIVE THRU CANOPY     |
| <b>EXTERIOR GROUND PRODUCT ONLY</b>   |      |      |                       |
| <b>G</b>                              | N/A  | 1    | DRIVE THRU CANOPY     |
| <b>H</b>                              | N/A  | 1    | DRIVE THRU PORTAL     |
| <b>I</b>                              | N/A  | 1    | MENU BOARD            |
| <b>J</b>                              | 47.9 | 1    | M-48 DF MONUMENT SIGN |



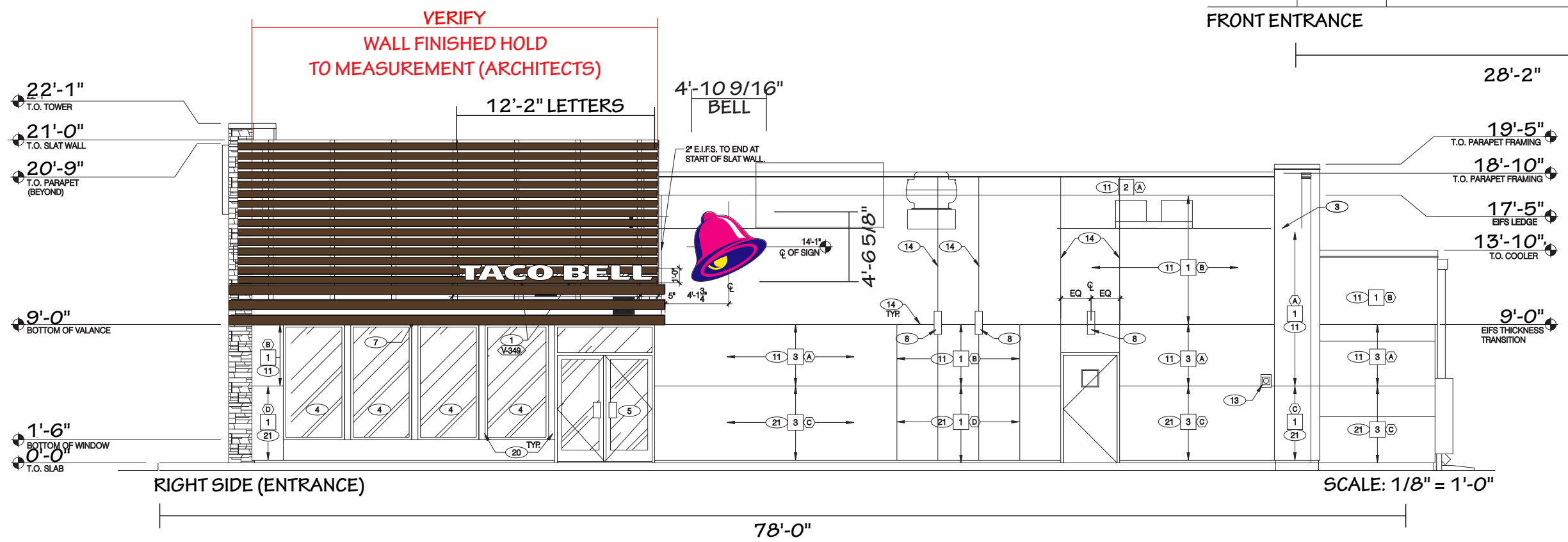
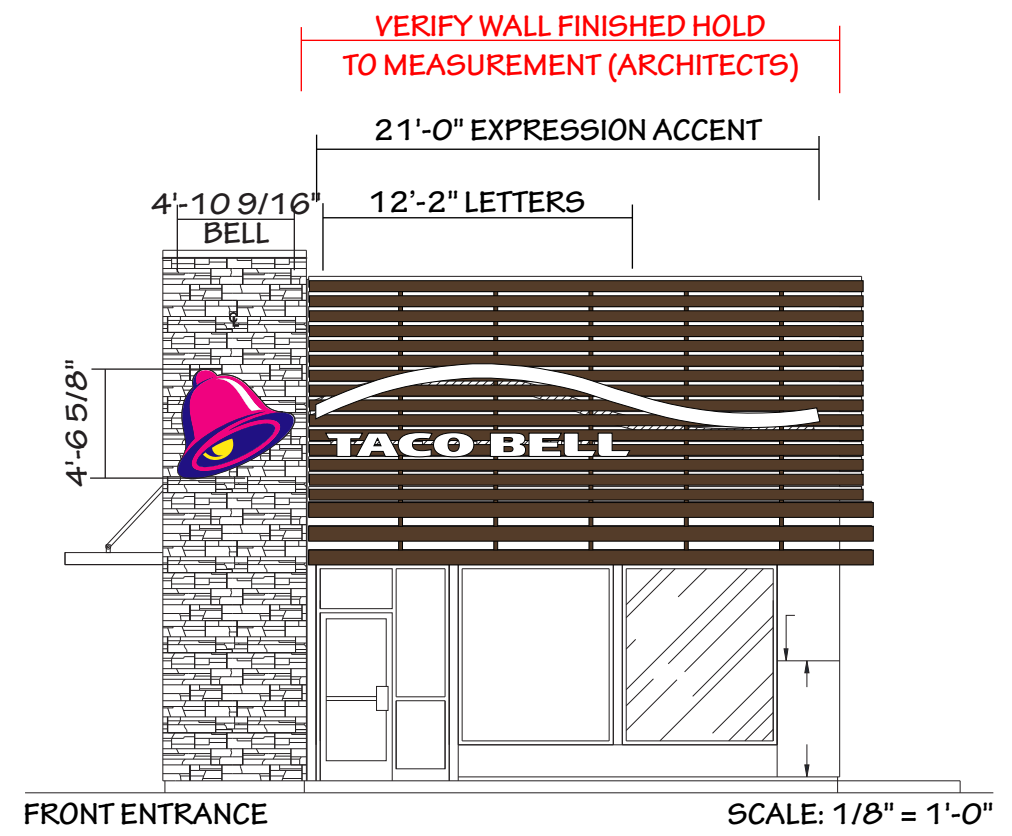
THIS IS AN ORIGINAL UNPUBLISHED DRAWING CREATED FOR YOUR PERSONAL USE IN CONNECTION WITH A PROJECT PLANNED FOR YOU BY CUMMINGS. IT IS NOT TO BE SHOWN OUTSIDE YOUR ORGANIZATION NOR USED, REPRODUCED, COPIED OR EXHIBITED IN ANY FASHION UNLESS AUTHORIZED IN WRITING BY AN OFFICER OF CUMMINGS.

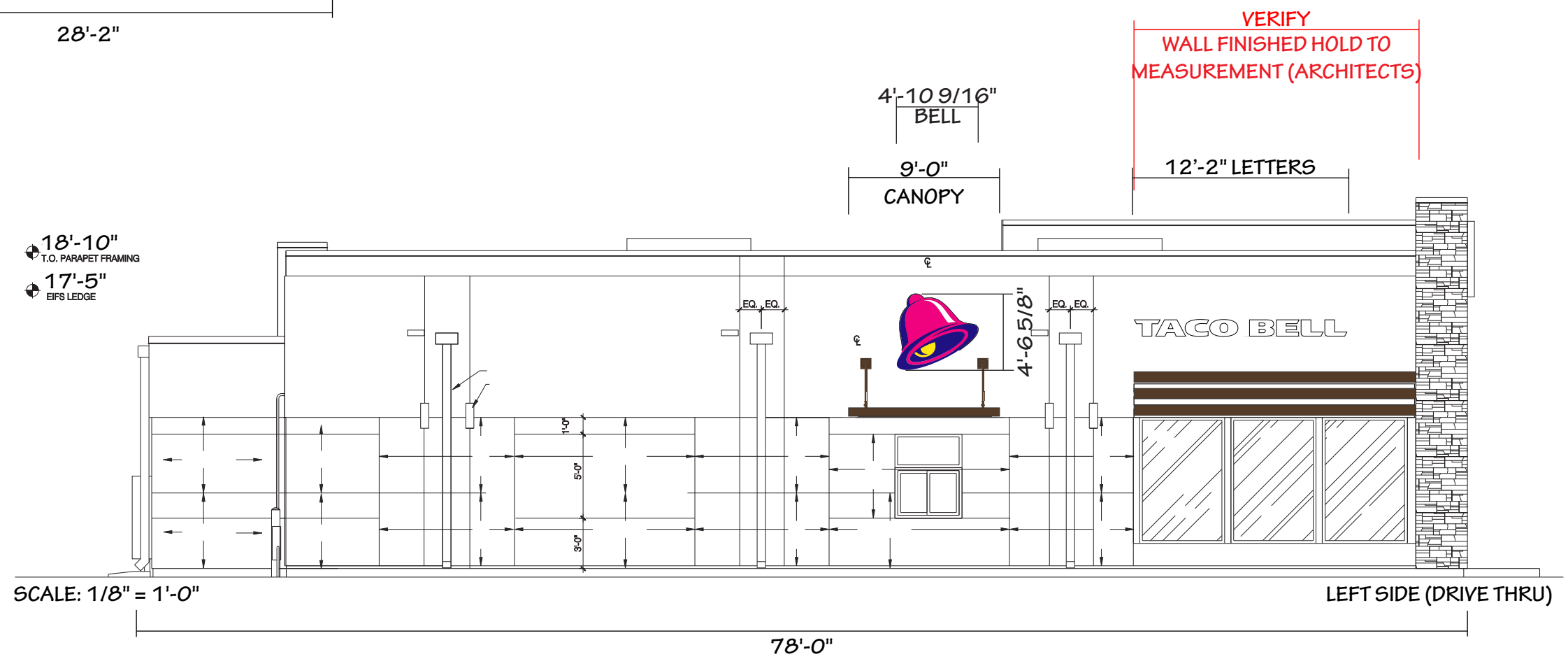
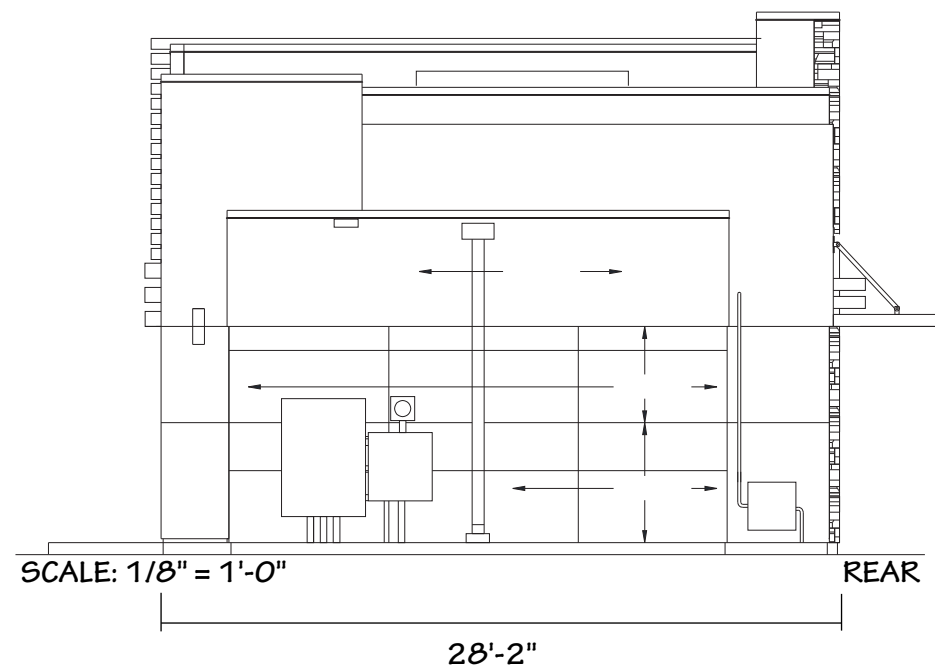
CUSTOMER APPROVAL: \_\_\_\_\_  
 DATE: \_\_\_\_\_

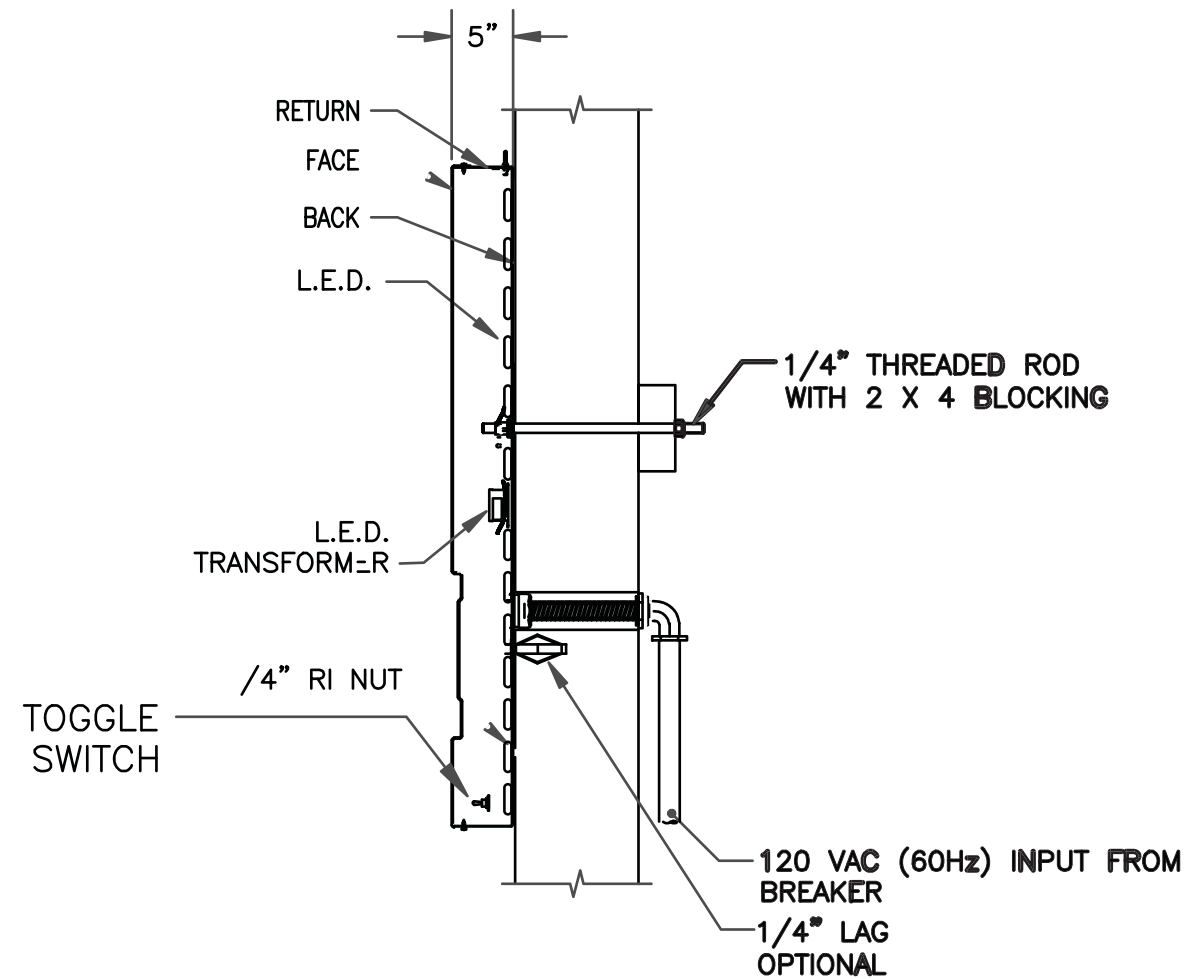
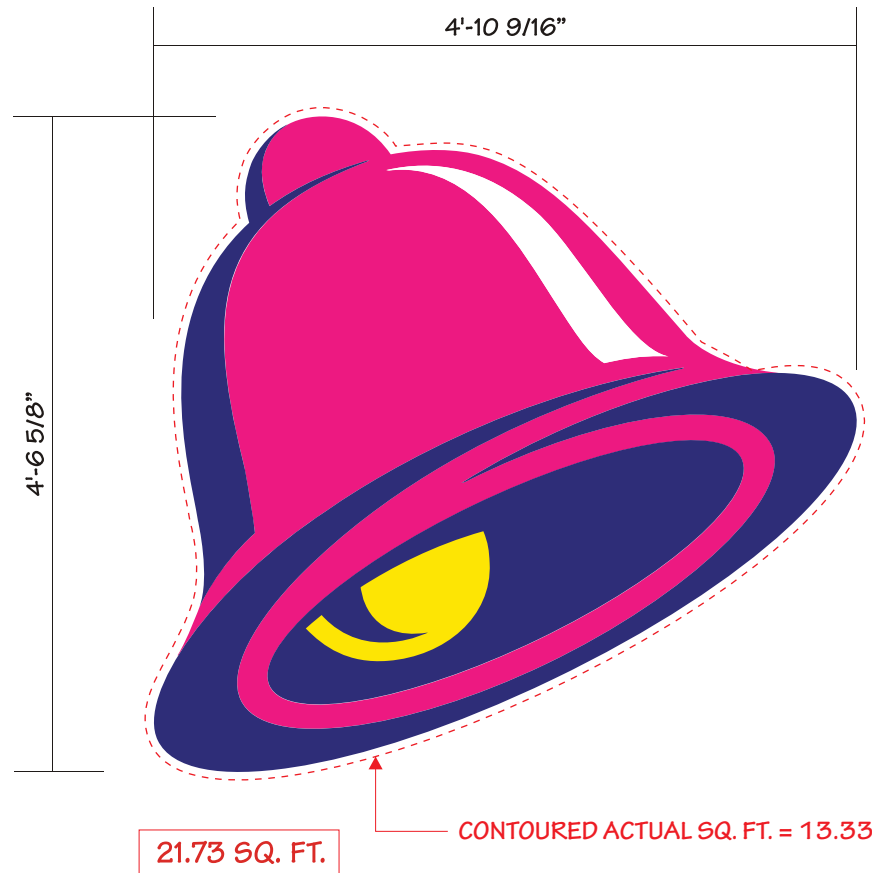
| Rev. #  | DATE  | BY    | Rev. #  | DATE  | BY    |
|---------|-------|-------|---------|-------|-------|
| Rev. #1 | _____ | _____ | Rev. #4 | _____ | _____ |
| Rev. #2 | _____ | _____ | Rev. #5 | _____ | _____ |
| Rev. #3 | _____ | _____ | Rev. #6 | _____ | _____ |

**TACO BELL**  
 1363 WASHINGTON AVE.,  
 PORTLAND, ME

DRAWING NO:  
**81840.01**  
 ARTIST: T. Pickel DATE: 1-22-16  
 SHEET: 1 OF 12







**SIGN SPECIFICATIONS**

Materials

- Return: Aluminum- 5" Deep
- Face: Formed And Debossed White Polycarbonate

Decoration

- Return: Painted Violet Spraylat L8-7917
- Face: 2nd Surface Graphics

Accesses

- Removable Face

Weight(Est.)

- 125 lbs.

Wind Load

- Windload Designed For 110 mph Wind Zone

**ELECTRICAL SPECIFICATIONS**

Illumination

- White LED's - 5000K

Electronic

- Power Supply

Line Load

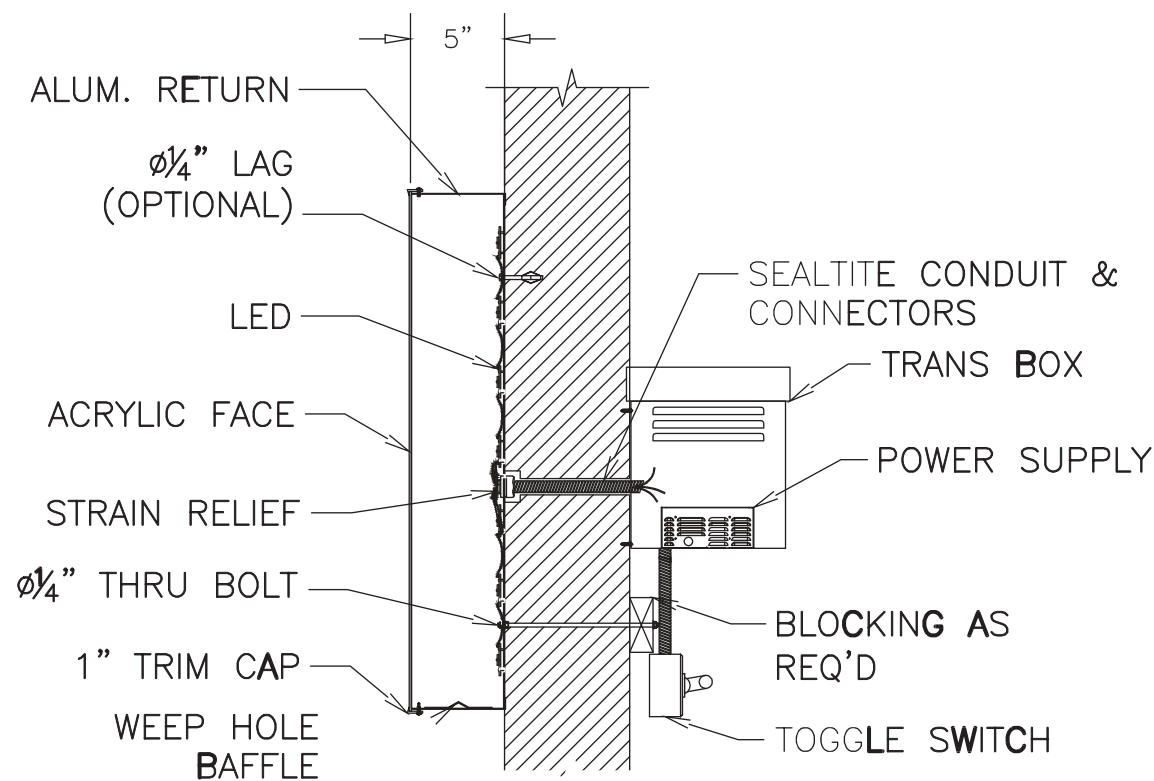
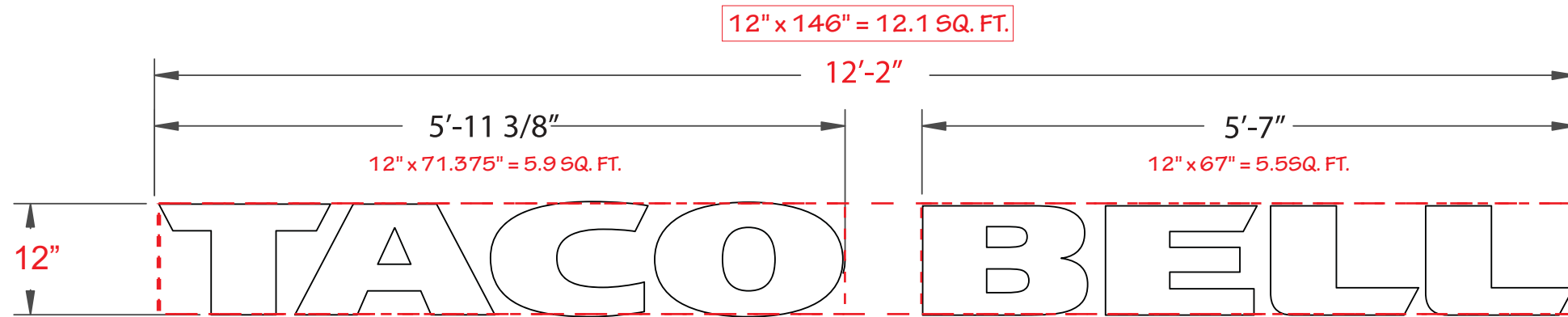
- Amps: 0.8
- Circuits: (1) 20 amp
- Volts: 120

**COLOR SPECIFICATIONS**

Graphic & Color Specifications

|         |                    |           |
|---------|--------------------|-----------|
| Color   | Other              | 3M        |
| White   | Spraylat White 801 |           |
| Violet  | Spraylat L8-7937   | 3630-9126 |
| Yellow  | Spraylat L8-7937   | 3630-015  |
| Magenta | Spraylat L8-7836   | 3630-1412 |

**PART # 823-NI-4X4-BELL**



SECTION VIEW  
EQUIPMENT GROUNDED

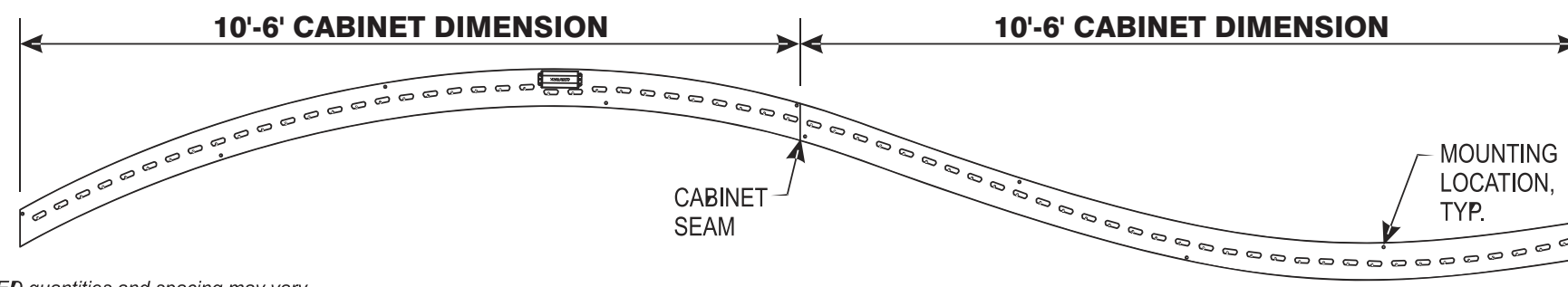
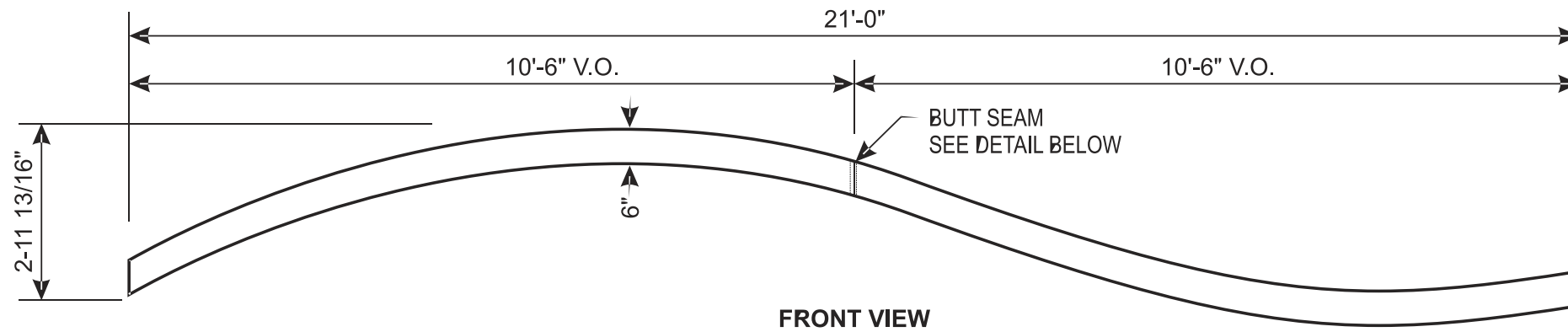
### SIGN SPECIFICATIONS

- Materials**
- Return: Aluminum
  - Face: Flat acrylic with 1" white trimcap.
- Decoration**
- Return: Painted White
- Wind Load**
- Windload Designed For 110 mph Wind Zone

### ELECTRICAL SPECIFICATIONS

- Illumination**
- White LED's
- Electronic**
- Ballast: t.b.d.
- Line Load**
- Amps: 0.8
  - Circuits: (1) 20 amp
  - Volts: 120

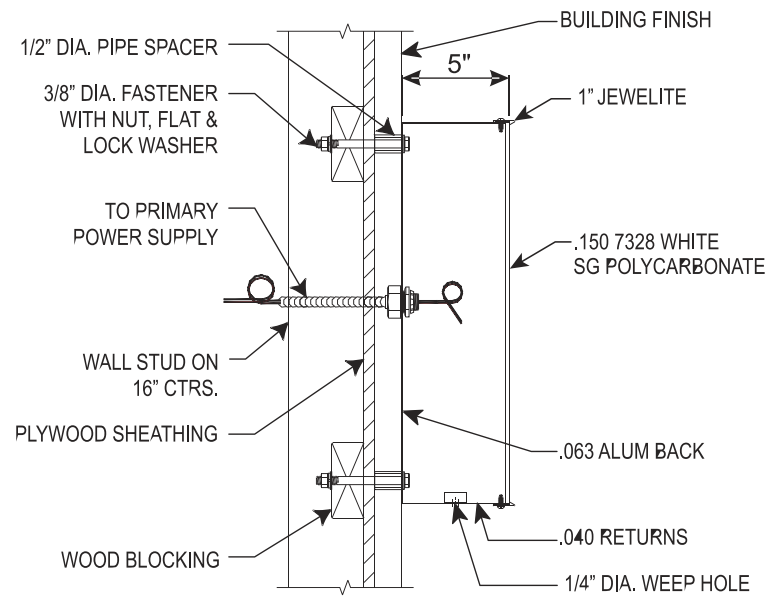
**PART# 823-IN-12-CL-WHITE**



LED quantities and spacing may vary based on system used.

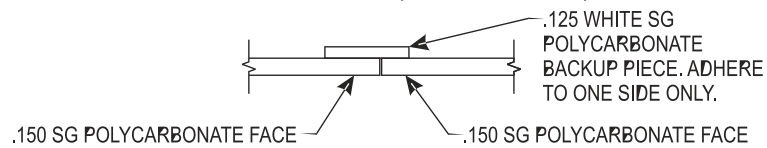
**TYPICAL SECTION**

N.T.S.



SEAL ALL WALL PENETRATIONS TO PREVENT WATER INTRUSION AS FOLLOWS: INSTALL BUSHING AFTER E.I.F.S. APPLICATION HAS HARDENED. DRILL HOLE SLIGHTLY LARGER THAN BUSHING THROUGH INSULATION ONLY. STOP AT PLYWOOD. CAULK OPENING PRIOR TO INSERTING FASTENER TO SEAL PENETRATION.

**BUTT SPLICE DETAIL (LOOKING DOWN)**



## SIGN SPECIFICATIONS

**SIGN**

**ID FACE**

**Substrate** 7328 white polycarbonate  
**Trimcap** (White) 1" Jewelite

**CABINET**

Aluminum returns with white finish and back.  
 (2piece can with field connection)

**ILLUMINATION**

Internal, LED

## ELECTRICAL SPECIFICATIONS

**AREA**

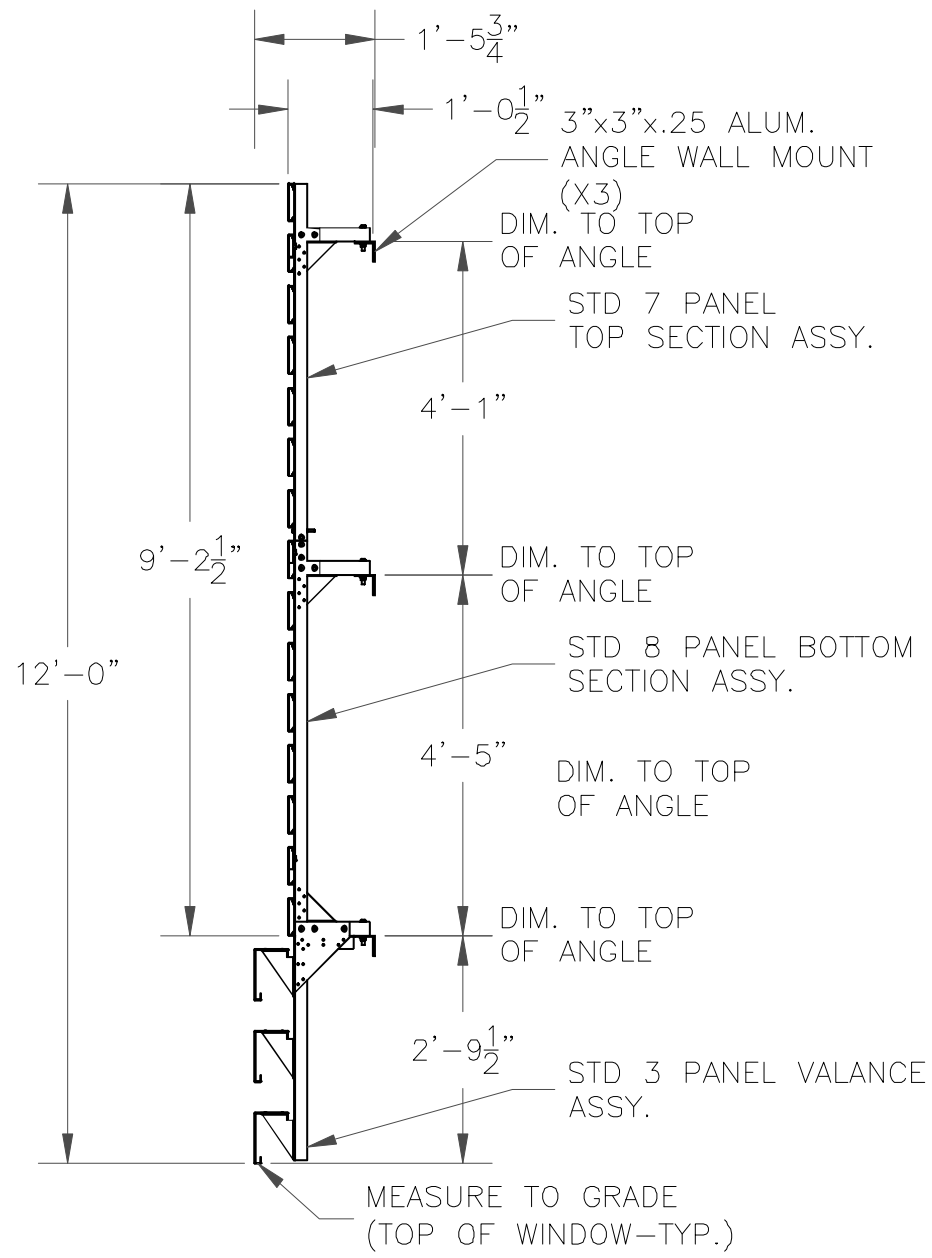
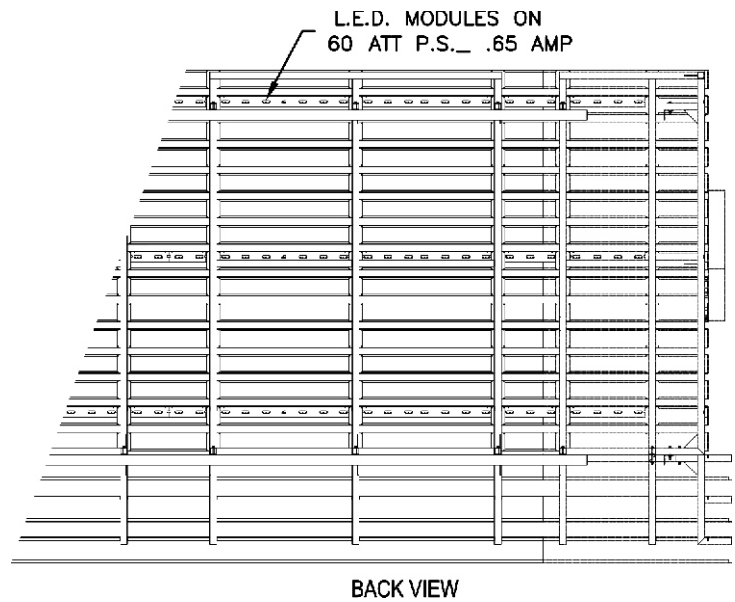
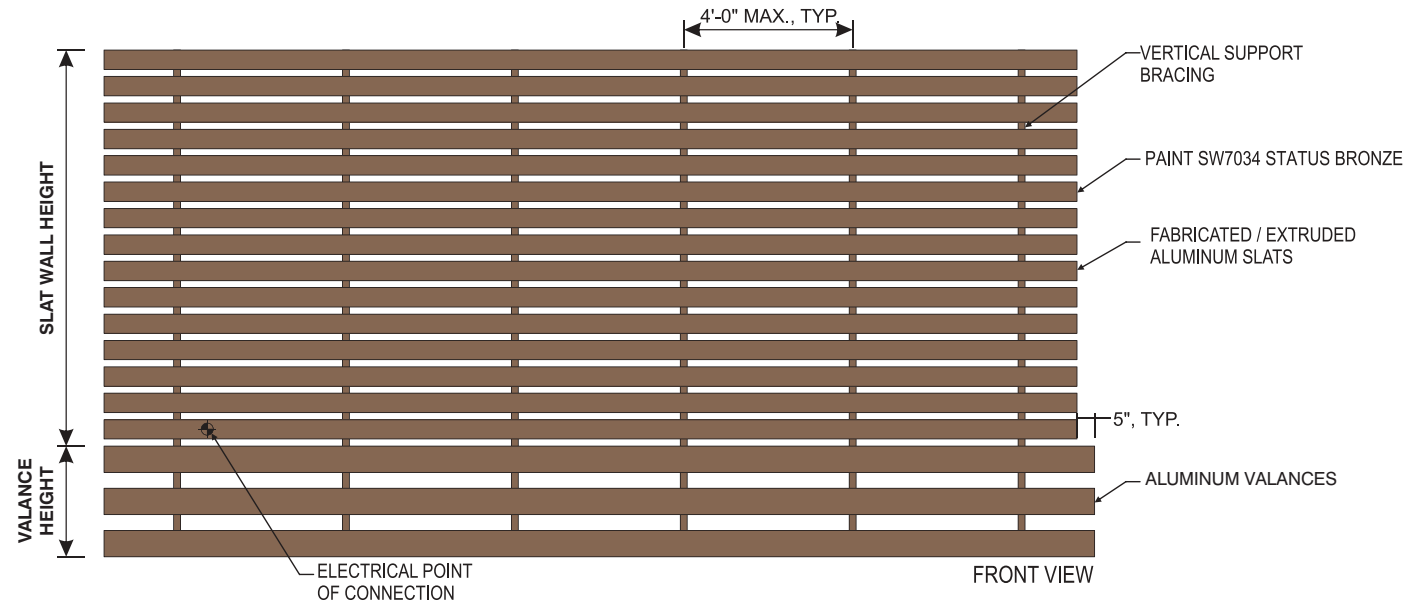
Squared: 62.67  
 Actual: 13.95

**CURRENT**

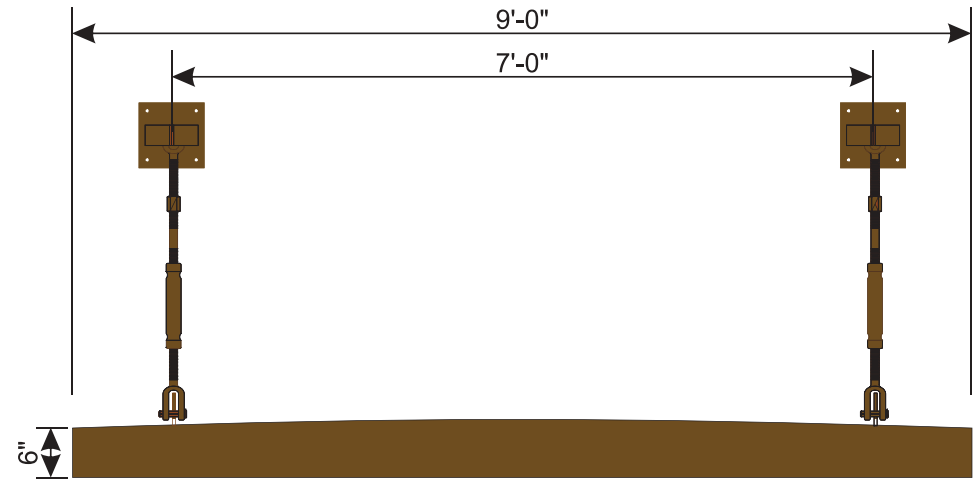
.8 amps

**CIRCUIT**

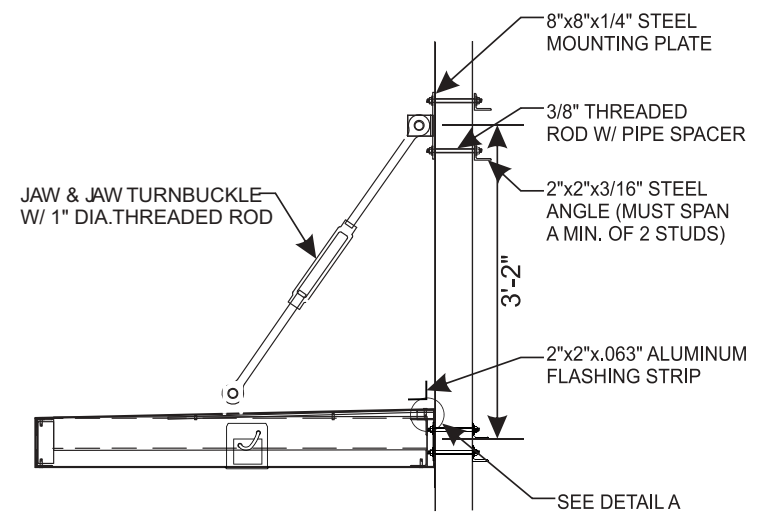
(1) 20-amp -120V



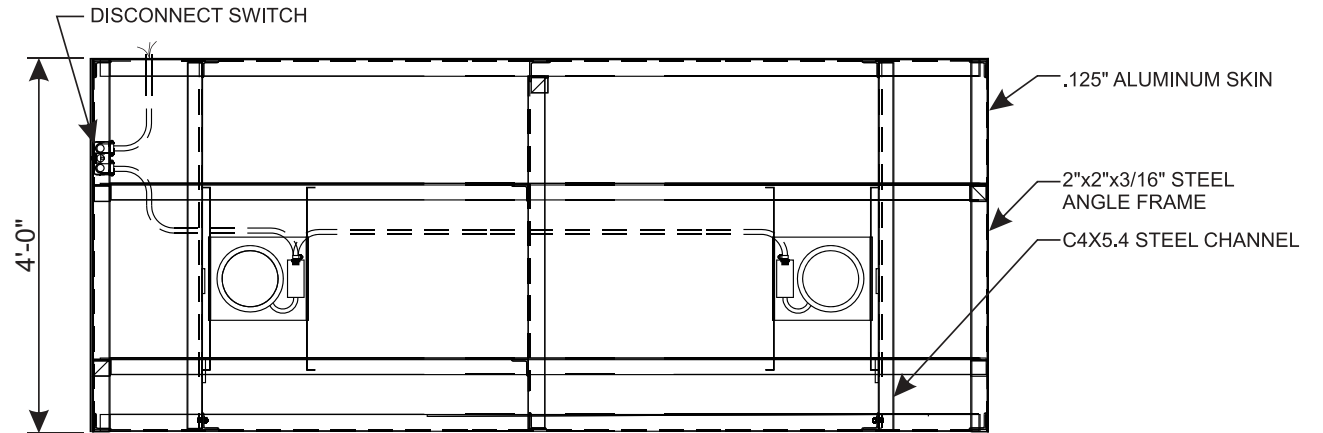
**DRAWINGS FOR REFERENCE ONLY AND NOT FOR MANUFACTURING**



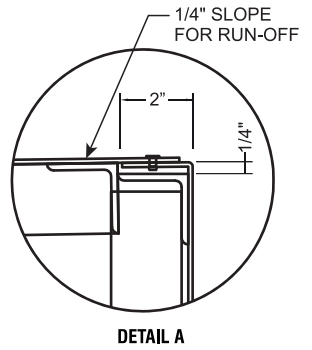
FRONT VIEW



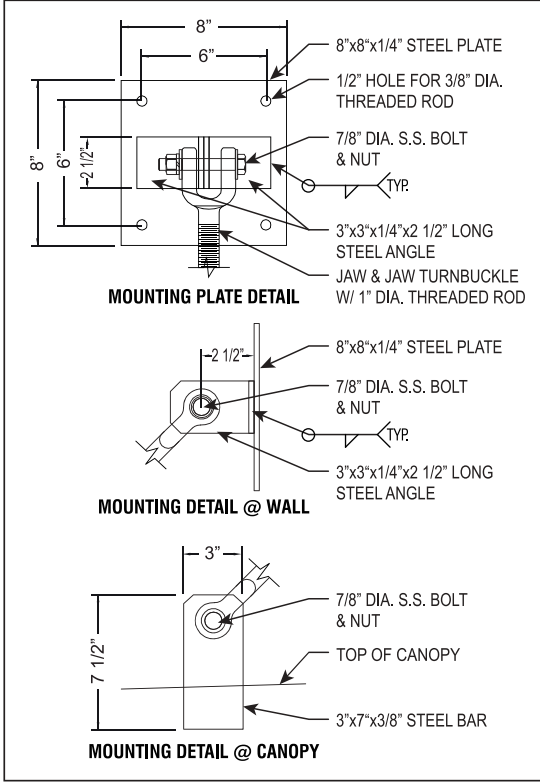
SIDE VIEW



TOP VIEW



DETAIL A



### SIGN SPECIFICATIONS

**Materials**

- Canopy: Fabricated Aluminum
- Frame: Constructed Of Channel And Angle

**Decoration**

- Canopy: Painted Tiger Drylac Bronze Metallic #49-66230

**Accesses**

- Service Doors Located Bottom Side Of Canopy

**Area**

T.B.D.

**Weight(Est.)**

T.B.D.

**Wind Load**

- Wind Load Designed For 110 mph Wind Zone

### ELECTRICAL SPECIFICATIONS

**DOWNLIGHTS**

**Illumination**

- (2) 20Watt CFL lamps .17 amps each.

### COLOR SPECIFICATIONS

**Graphic & Color Specifications**

**Color**

Tiger Drylac Bronze Metallic

**PART # 823-NI-6INX4X9-CPY**



### SIGN SPECIFICATIONS

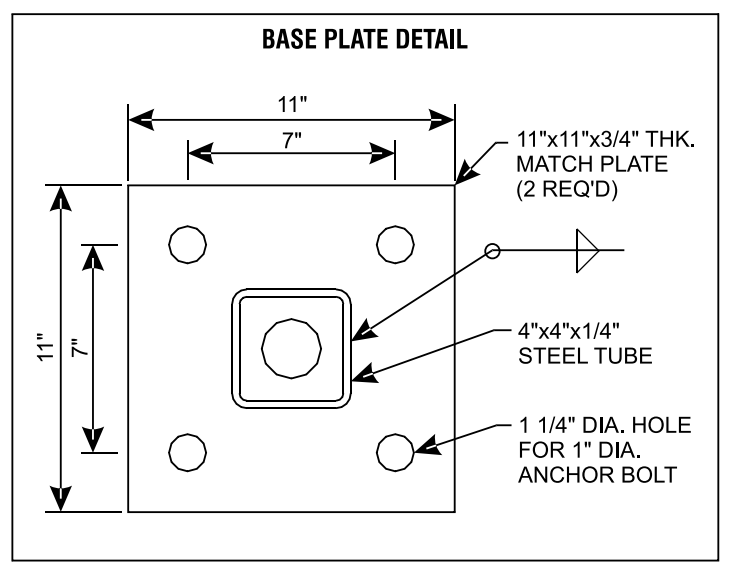
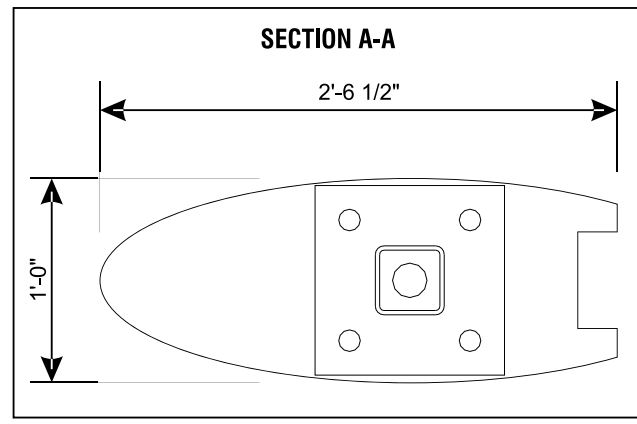
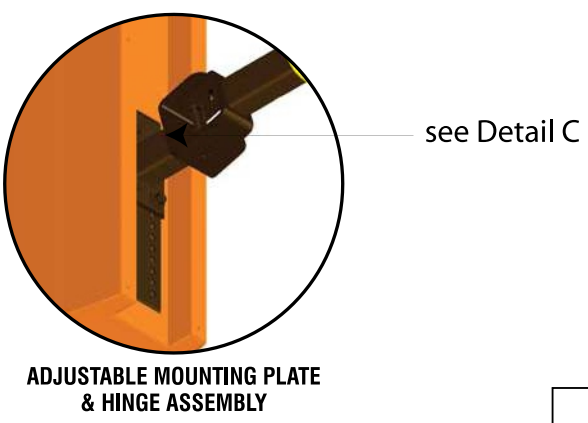
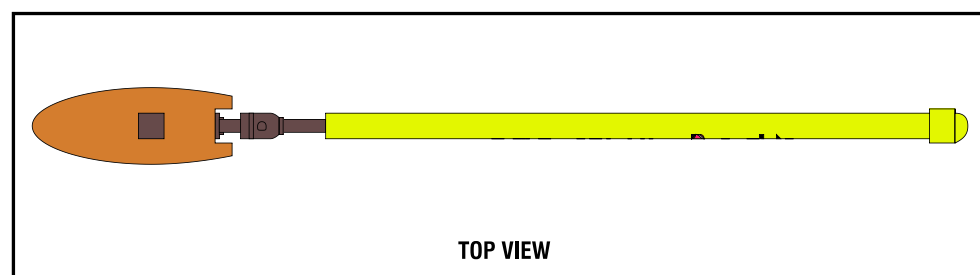
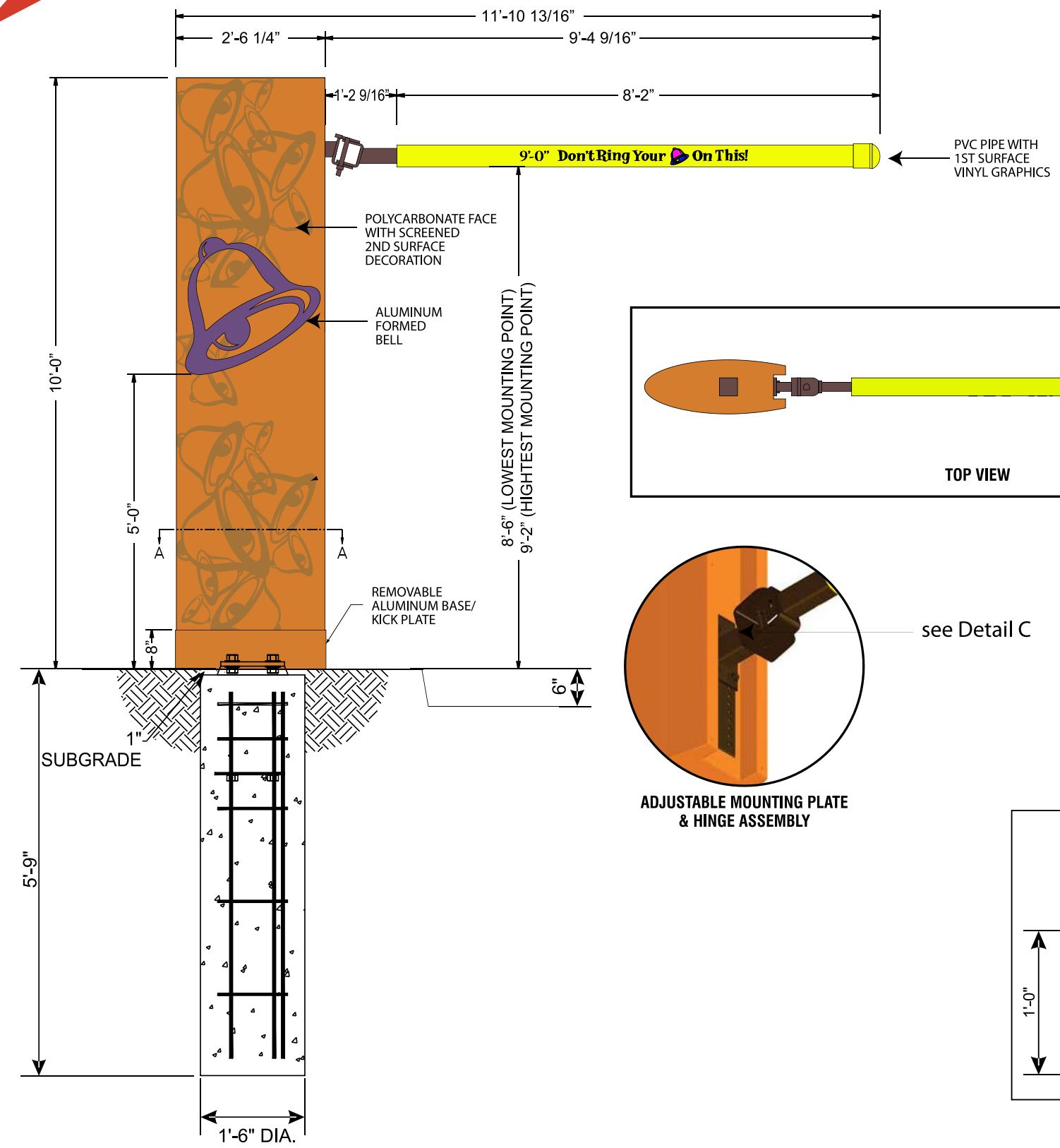
**Materials**  
 Polycarbonate face with screened decoration - 2nd surface.  
 Aluminum formed bell.  
 Removable shroud.  
 PVC pipe with vinyl graphics applied 1st surface.

### ELECTRICAL SPECIFICATIONS

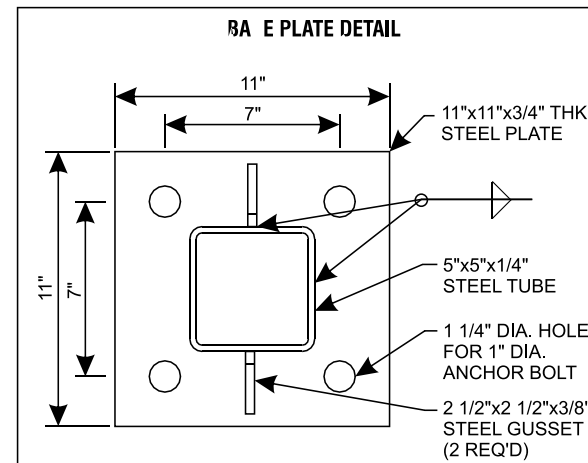
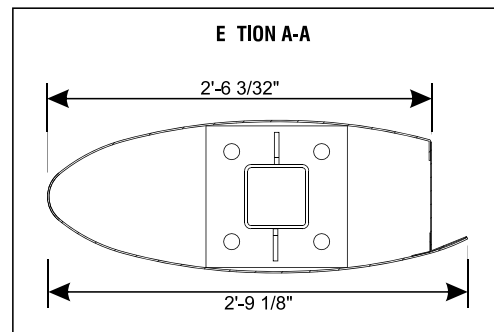
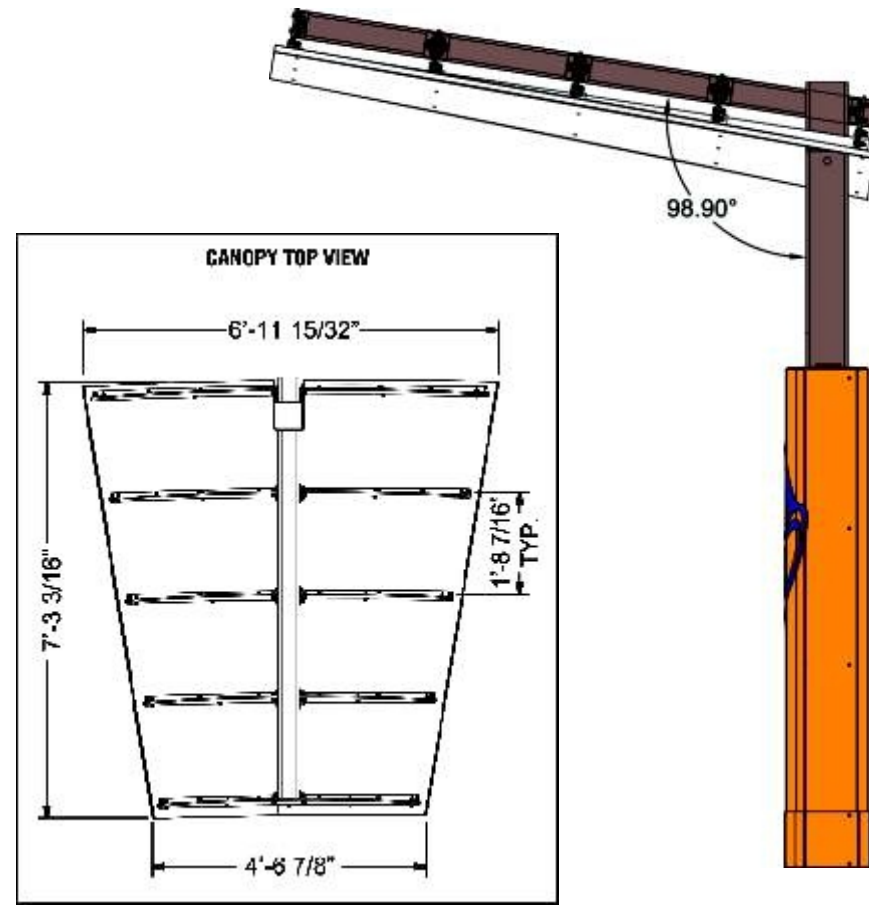
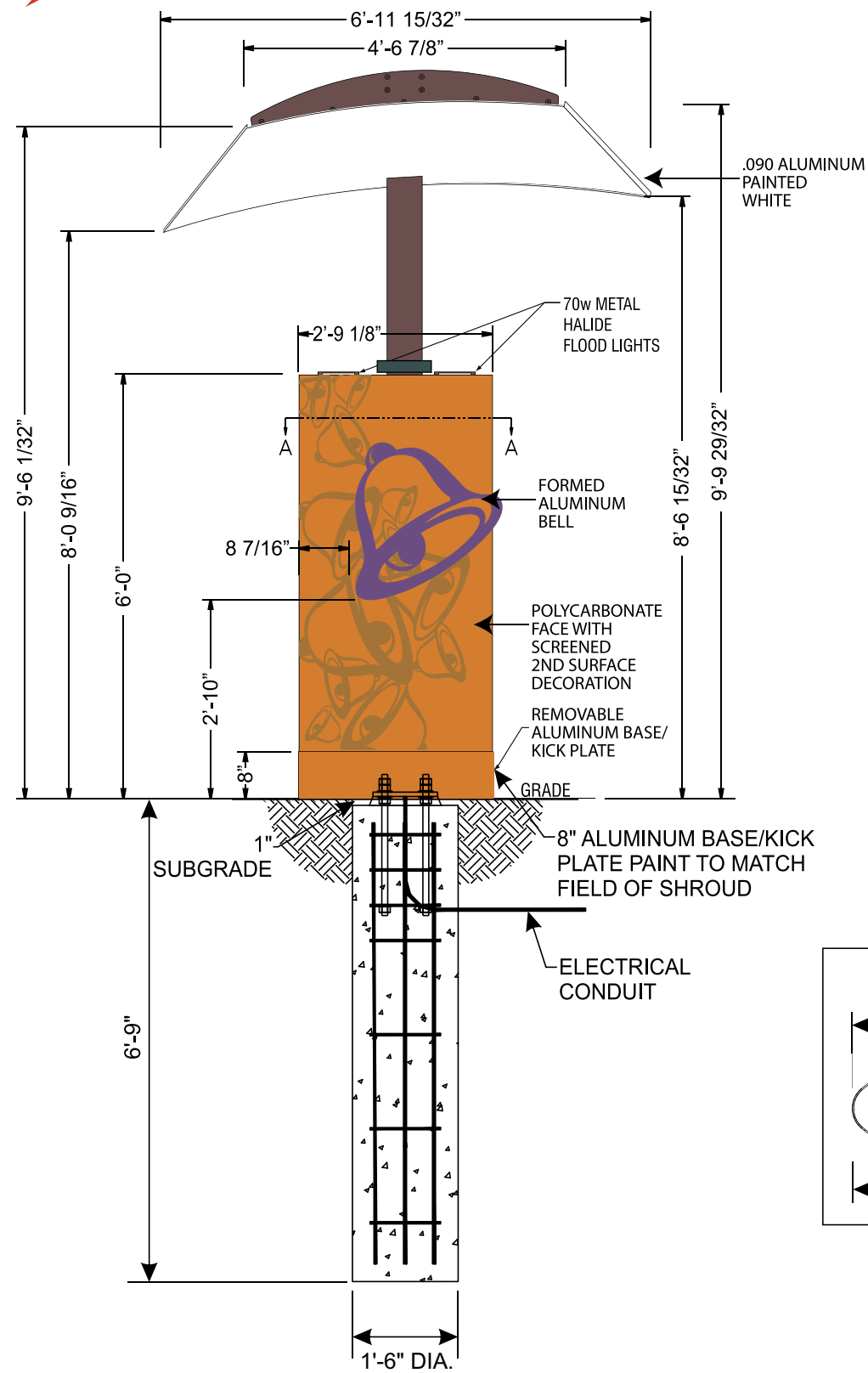
N/A

### COLOR SPECIFICATIONS

Polycarbonate Cladding:  
 Screen second surface: Amber Wave SW6657  
 Bell Graphics: Screen second surface  
 Light Bell: PMS 131U  
 Dark Bell: PMS 139U  
 Hinge Assembly  
 TB Bronze Tiger Drylac 49-66230 C33  
 Metal Bell: Paint to Match PMS 2685  
 Clearance Bar: Paint to match PMS 108



**PART #823-NI-PORTAL-SHROUD**  
**PART #823-NI-PORTAL-KIT**



## SIGN SPECIFICATIONS

### Materials

- Polycarbonate face with screened decorations - 2nd surface.
- Aluminum canopy with steel ribs.
- Formed aluminum bell.
- Removable shroud.

## ELECTRICAL SPECIFICATIONS

- (2) 70 watt metal halide lamps.
- 1.7 amps

## COLOR SPECIFICATIONS

- Polycarbonate Cladding:
  - Screen second surface: Amber Wave SW6657
  - Bell Graphics: Screen second surface
  - Light Bell: PMS 131U
  - Dark Bell: PMS 139U
- Canopy posts and framing members:
  - TB Bronze Tiger Drylac 49-66230 C33
- Metal Bell: Paint to Match PMS 2685
- Canopy: White SW2123 eggshell finish

**PART #823-NI-DTCNPY-SHROUD**  
**PART #823-NI-DTCNPY-ABKIT**

| Rev. #  | DATE | BY | Rev. #  | DATE | BY |
|---------|------|----|---------|------|----|
| Rev. #1 |      |    | Rev. #4 |      |    |
| Rev. #2 |      |    | Rev. #5 |      |    |
| Rev. #3 |      |    | Rev. #6 |      |    |

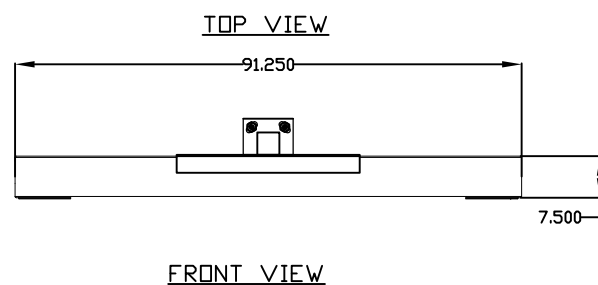
### SIGN SPECIFICATIONS

- OVERALL DIMENSIONS OF SIGN :  
HEIGHT: 104.750"  
WIDTH : 91.250"  
DEPTH : 7.5"
- AREA OF SIGN - SQUARED : 66.37 SQ.FT.
- LUMENS:  
MENU BOARD: 7,095
- LEDS :  
MENU BOARD: 33-FT 4100K
- POWER SUPPLY : (2) 60-WATT ( 0.96 AMPS EA )
- TOTAL LINE LOAD: 1.92 AMPS @ 120VAC
- (1) 15 AMP CIRCUIT, 60Hz UL 48 & NEC COMPLIANT
- SIGN IS MANUFACTURED TO UL 48 SPECIFICATIONS.
- PAINT SPECIFICATIONS : (SIGN)  
INTERIOR : MILL FINISH  
EXTERIOR CABINET : BRONZE, TIGER DRYLAC 49/66230\_33  
EXTERIOR DOORS AND FRONT : SATIN BLACK
- MAXIMUM DESIGN WIND LOAD :  
100 MPH WIND SPEED -EXPOSURE C.
- CRATED WEIGHT: 745 LBS
- SIGN WILL BE SERVICEABLE BY: OPENING DOOR PANELS TO SERVICE LEDES AND POWER SUPPLY.
- DESIGN SPECIFICATION:  
3,000 P.S.I. CONCRETE 0.61 CU. YDS.

### INSTALLATION INSTRUCTIONS

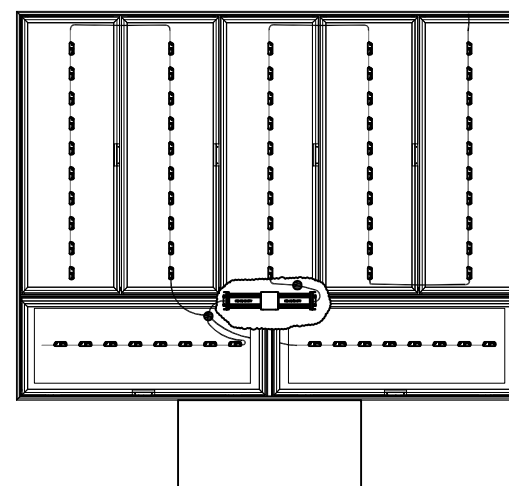
- OPEN PACKAGING CAREFULLY AND INSPECT FOR DAMAGE. IF DAMAGE IS FOUND, CLAIM MUST BE FILED WITHIN 15-DAYS WITH SHIPPING AGENT.
- MARK FOUNDATION AREA AND RECEIVE CONFIRMATION FROM CLIENT OR CONTRACTOR.
- EXCAVATE FOUNDATION AREA.
- ALL DESIGN AND CONSTRUCTION OF FOUNDATION MUST BE ACCORDING TO ACI 318-99 REQUIREMENTS.
- SET COLUMN AND ANCHOR BOLTS PLUMB IF REQUIRED, INSTALL CONDUIT STUB AND POUR CONCRETE.
- ALLOW CONCRETE TO CURE: EXCAVATIONS MUST CURE UNDER PROPER CONDITIONS FOR 7-DAYS PRIOR TO ANY INSTALLATION. COMPRESSIVE STRENGTH AT 28 DAYS, F'c= 3,000 PSI MINIMUM.
- INSTALL POLE AND / OR SIGN.
- MAKE FINAL ELECTRICAL HOOK UP TO PRIMARY WIRING INTO WEATHER PROOF BOX, SUPPLIED BY INSTALLER.
- ELECTRICAL NOTE: ALL WIRING AND ELECTRICAL CONNECTIONS ON THIS SIGN MUST BE INSTALLED IN ACCORDANCE WITH THE REQUIREMENTS OF ARTICLE 600 OF THE NATIONAL ELECTRICAL CODES AND/OR OTHER APPLICABLE LOCAL CODES. THIS INCLUDES PROPER GROUNDING AND BONDING OF THE SIGN.
- PAINT THE POLE AND/OR ANY OTHER APPLICABLE AREAS, AS STATED ON THE PURCHASE ORDER, PERFORM ANY OTHER TOUCH UP AS REQUIRED.
- REMOVE LIFTING BRACKETS FROM TOP OF SIGN.
- TEST LIGHT THE SIGN AND CHECK FOR PROPER ILLUMINATION
- CLEAN UP: CLEAN INSTALLATION WORK SITE OF ALL EXCESS MATERIALS AND DEBRIS.  
CLEAN UP NOTE: DO NOT DISCARD ANY MATERIAL OR DIBRIS INTO ON SITE DUMPSTERS.

DESIGN NOTE:  
CONCRETE BASE DESIGN IS BASED ON 100 MPH, EXPOSURE-C GUST DESIGN WIND SPEED PER IBC 2006, EXPOSURE C. CONCRETE FOUNDATION DESIGNED USING A LATERAL SOIL BEARING PRESSURE OF 150 PSF/LF IF THESE SOIL CONDITIONS DO NOT EXIST AT THE FOUNDATION LOCATION, IT IS THE ERECTOR'S RESPONSIBILITY TO NOTIFY EVERBRITE, LLC PRIOR TO PERFORMING ADDITIONAL EXCAVATION OR ANY CONCRETE PLACEMENT.

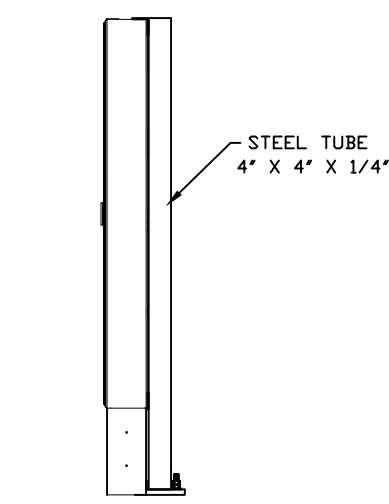


INSTALLATION NOTE: ASSURE THE DRIVE THRU MENU BOARD IS LEVEL BOTH VERTICALLY AND HORIZONTALLY DURING THE INSTALLATION PROCESS.

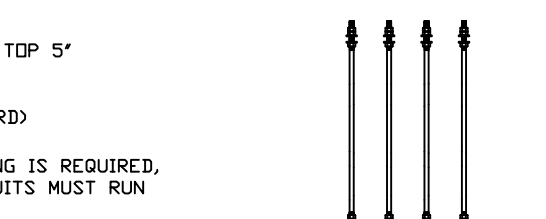
### LED LAYOUT AND WIRING DIAGRAM



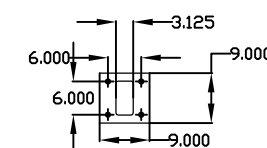
### SIDE VIEW



### FOUNDATION KIT SOLD SEPARATLY:

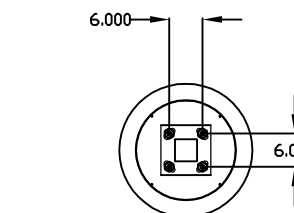


(4) 3/4"X36" ANCHOR BOLTS

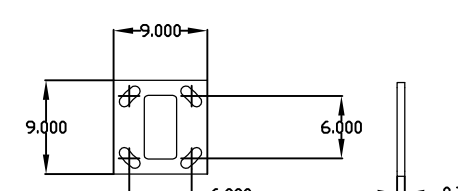


(1) PLYWOOD ANCHOR BOLT MOUNTING TEMPLATE

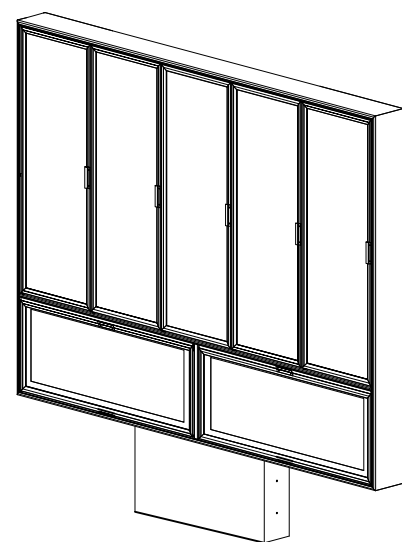
TO ORDER USE ITEM# KT01723P



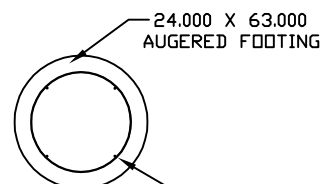
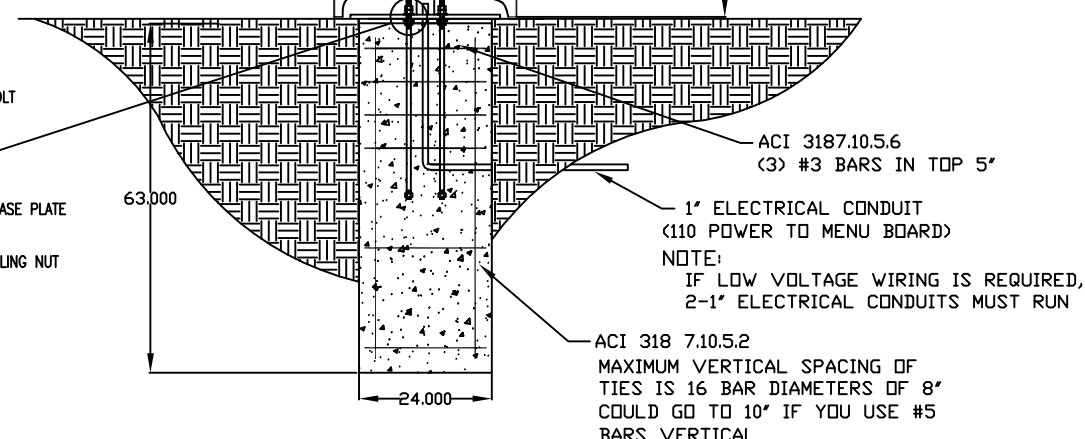
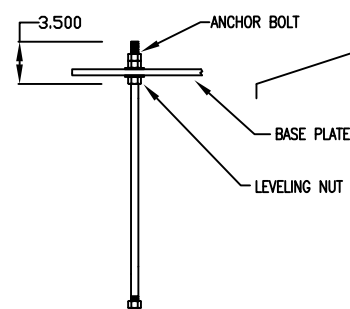
FOUNDATION WITH BASE PLATE



BASE PLATE



ISO VIEW

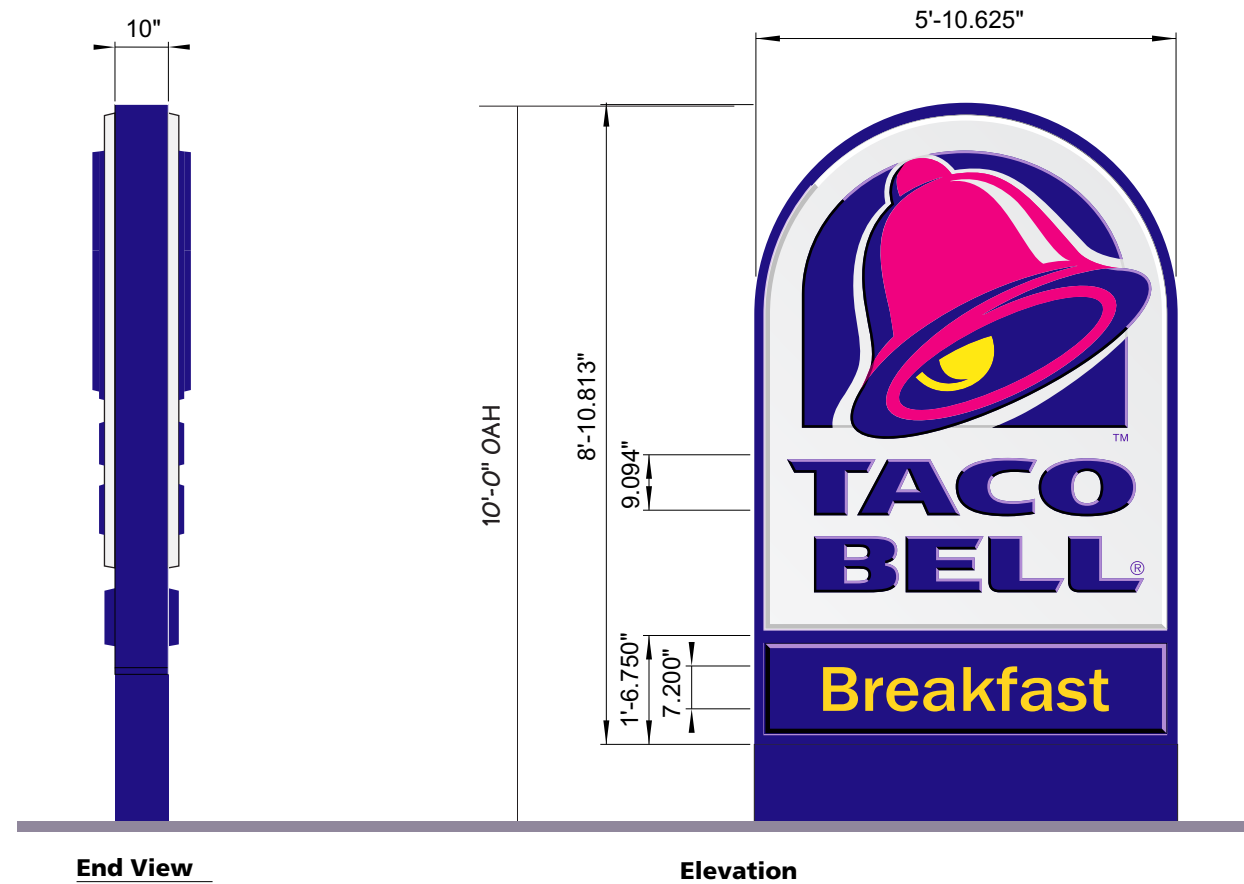


24.000 X 63.000 AUGERED FOOTING  
3' COVER REQUIRED BETWEEN REBAR AND SOIL, NEED 18" CIRCLE

CUSTOMER APPROVAL:

DATE:

| Rev. #  | DATE | BY | Rev. #  | DATE | BY |
|---------|------|----|---------|------|----|
| Rev. #1 |      |    | Rev. #4 |      |    |
| Rev. #2 |      |    | Rev. #5 |      |    |
| Rev. #3 |      |    | Rev. #6 |      |    |



**SIGN SPECIFICATIONS**

**SIGN**

**ID FACE**

**Substrate** .118" colorless solar-grade polycarbonate silk screened on second surface

**Background** (White) Formed 1.500"

**Field** (Violet and white) Embossed .750"fm background

**Bell**

Outside surface (Magenta, violet, and white) Embossed 1.000" from field

Inside surface (bottom) (Violet) Debossed .750"fm outside

Clapper (Yellow only) Embossed .375"fm inside

**Wordmark** (Violet) Embossed .500"

**APPENDAGE FACE**

**Substrate** .118" colorless solar-grade polycarbonate silk-screened or sprayed on second surface

**Background** (Violet) Formed 1.500"

**Letters** (yellow) Flat

**CABINET**

(Painted violet) Extruded aluminum

**ILLUMINATION**

Internal, with T12/Dsgn50/HO fluorescent lamps

**SUPPORT** Aluminum shroud painted violet

(6" steel square tube)

**ELECTRICAL SPECIFICATIONS**

**AREA**

47.9 sqft

**CURRENT**


7.00 amps

**CIRCUIT REQUIRED**

(1) 20 amp

**FACE COLORS (SILK-SCREENED)**

 Spraylat Violet L8-7917

 Spraylat Magenta L8-7837

 Spraylat Yellow L8-7836

 Spraylat White 801

**EXPOSED METAL COLOR (PAINTED)**

 To match Spraylat Violet L8-7917

**PART # 823-P48-S**

CUSTOMER APPROVAL:

\_\_\_\_\_

DATE: \_\_\_\_\_

|         | DATE  | BY    |         | DATE  | BY    |
|---------|-------|-------|---------|-------|-------|
| Rev. #1 | _____ | _____ | Rev. #4 | _____ | _____ |
| Rev. #2 | _____ | _____ | Rev. #5 | _____ | _____ |
| Rev. #3 | _____ | _____ | Rev. #6 | _____ | _____ |