

BOLLARD DETAIL 1/2" = 1'-0" **7**

SYMBOL	AREA	MANUFACTURER	COLOR
1	GATE COLOR	SHERWIN WILLIAMS	IRON ORE SW 7069
2	PIPE BOLLARDS	SHERWIN WILLIAMS	SAFETY YELLOW
3	C.M.U.	SHERWIN WILLIAMS	GRIZZLE GREY SW 7068

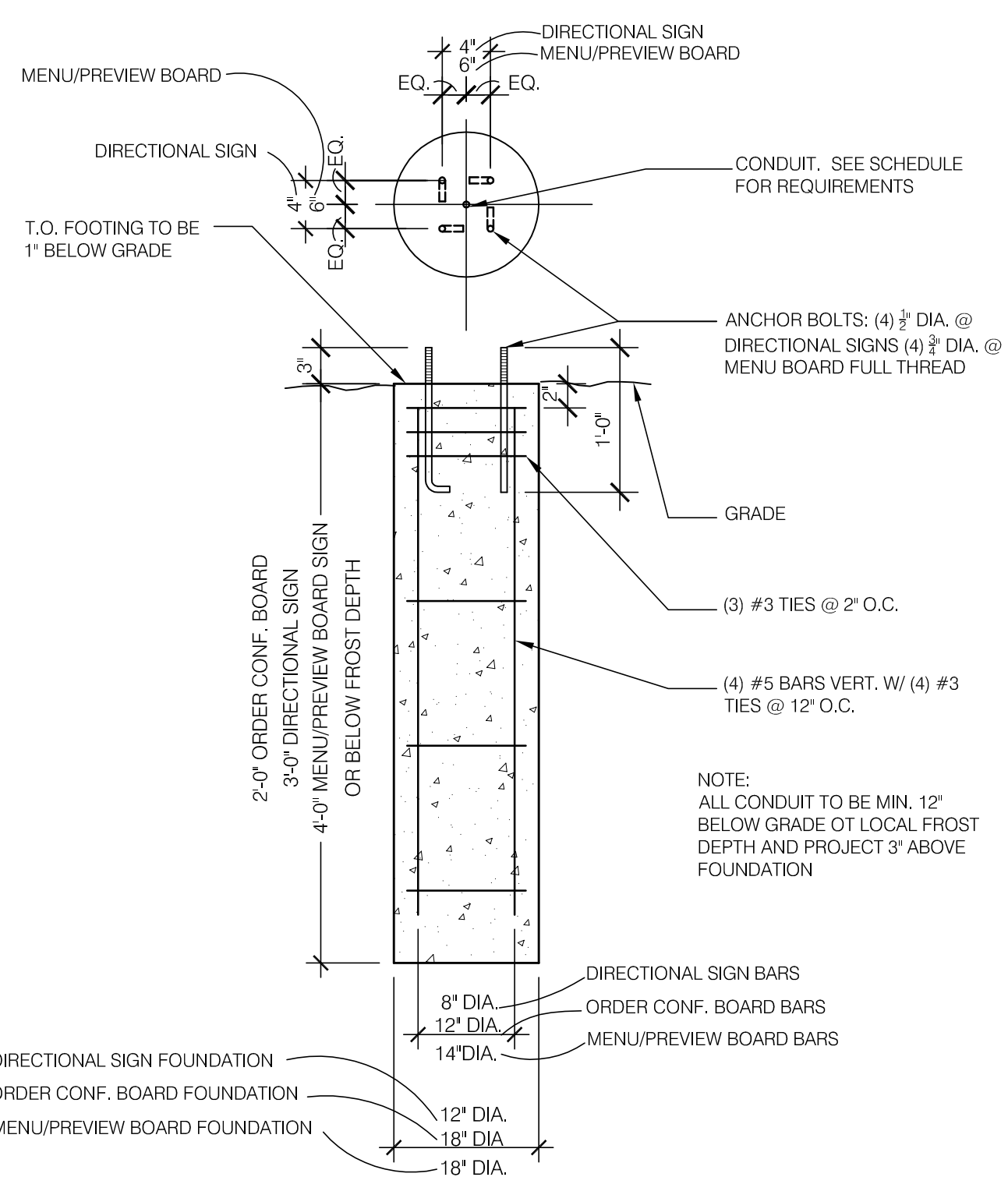
VERIFY ALL COLORS WITH ARCHITECT PRIOR TO CONSTRUCTION

SCHEDULE N.T.S. **8**

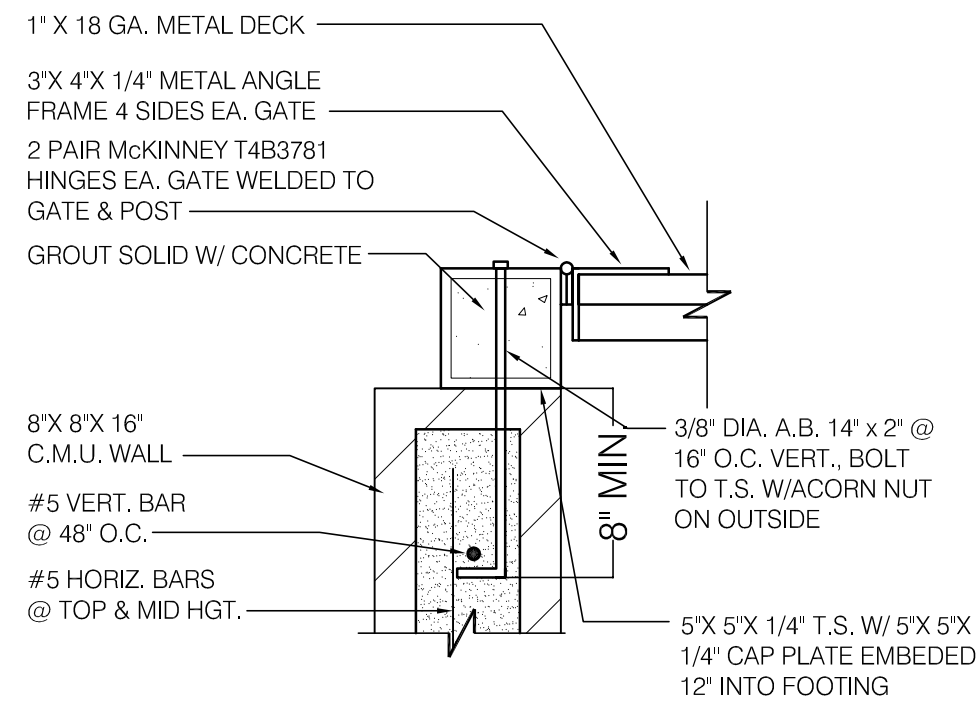
CONDUIT SCHEDULE

DEVICE	POWER	DATA
DIRECTIONAL	(1) 3/4"	-
OCB	(1) 3/4"	(3) 1"
MENU BOARD	(1) 3/4"	-

NOTE:
BOLT PATTERN PROVIDED AS
EXAMPLE - OBTAIN ANCHOR
BOLT TEMPLATE FROM
SUPPLIER



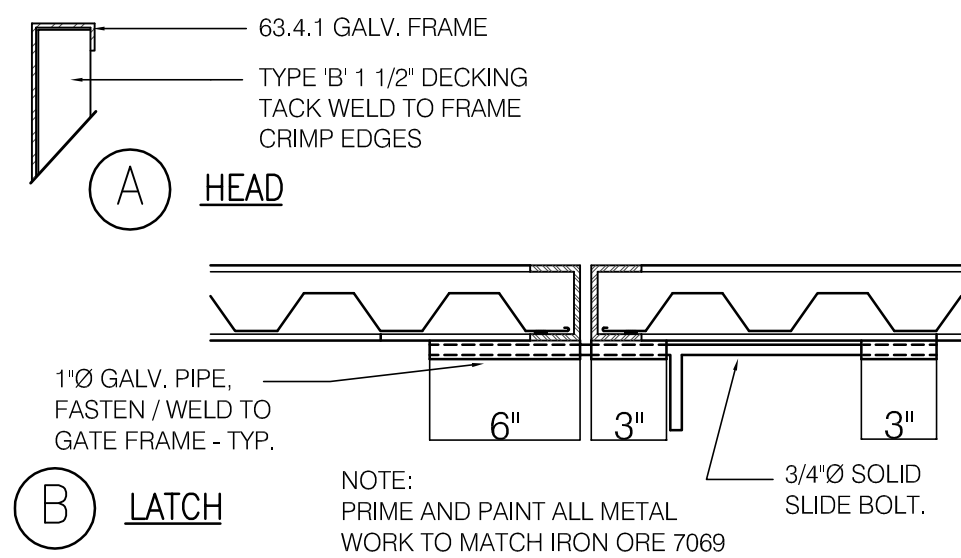
MENU BOARD FOOTING N.T.S. **10**



JAMB DETAIL 1 1/2" = 1'-0" **5**

GATE NOTES:
(2) EQUAL (±6'-0") WIDE x 6'-0" HIGH MTL. GATES, TYPE 'B' 1 1/2" DECKING, 22GA. W/ T.S. 1875 BAR CROSS BRACING WELD AND GRIND SMOOTH. ALL CONNECTIONS, TYP. PRIME AND PAINT COLOR TO MATCH IRON ORE (SW7069).

GATE HARDWARE:
1. ALL HARDWARE AND ACCESSORIES SHALL BE HEAVY GALVANIZED.
2. **GATE STOP** - MUSHROOM TYPE OR FLUSH PLATE WITH ANCHORS SET IN CONCRETE TO ENGAGE THE CENTER DROP ROD OR PLUNGER BAR.

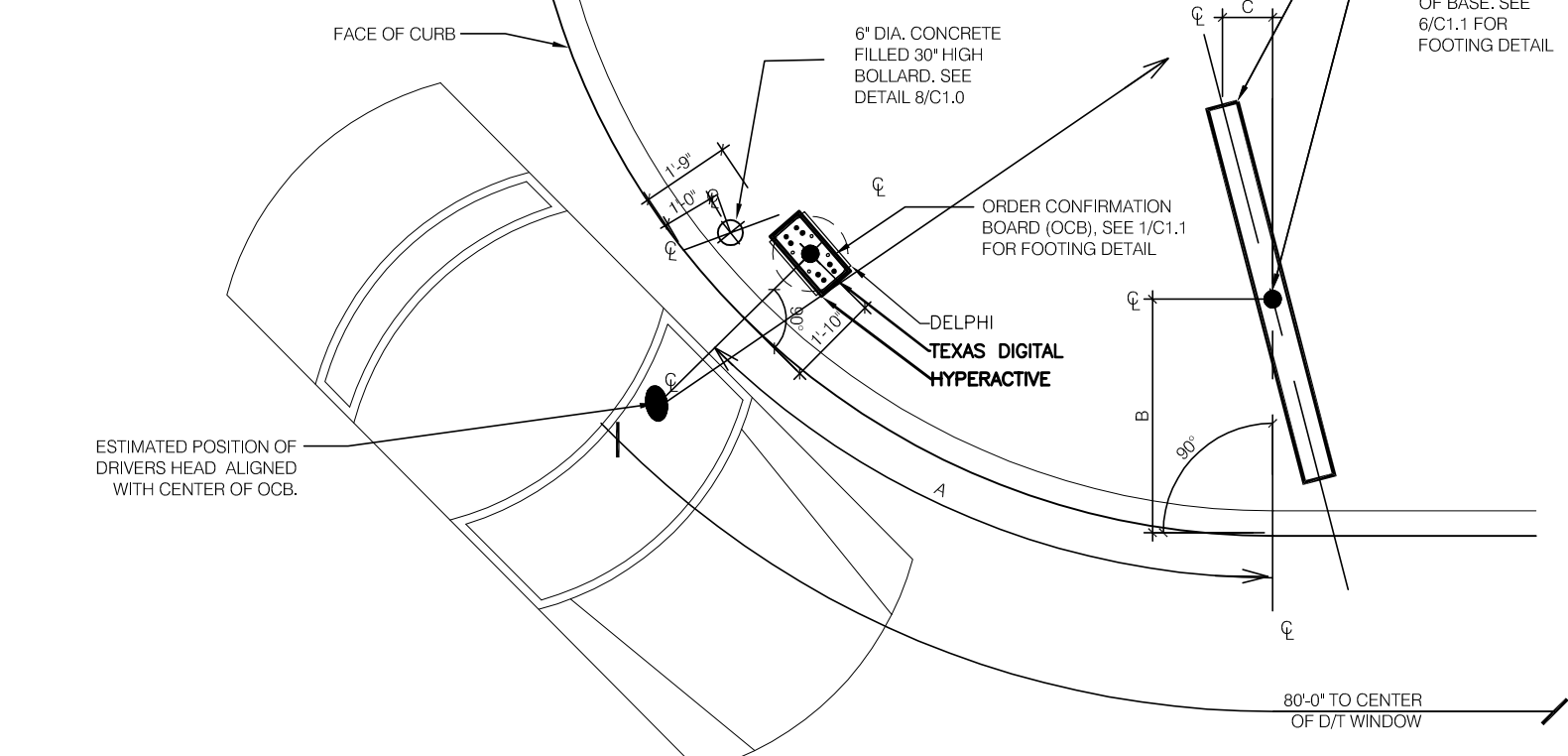


GATE DETAILS N.T.S. **6**

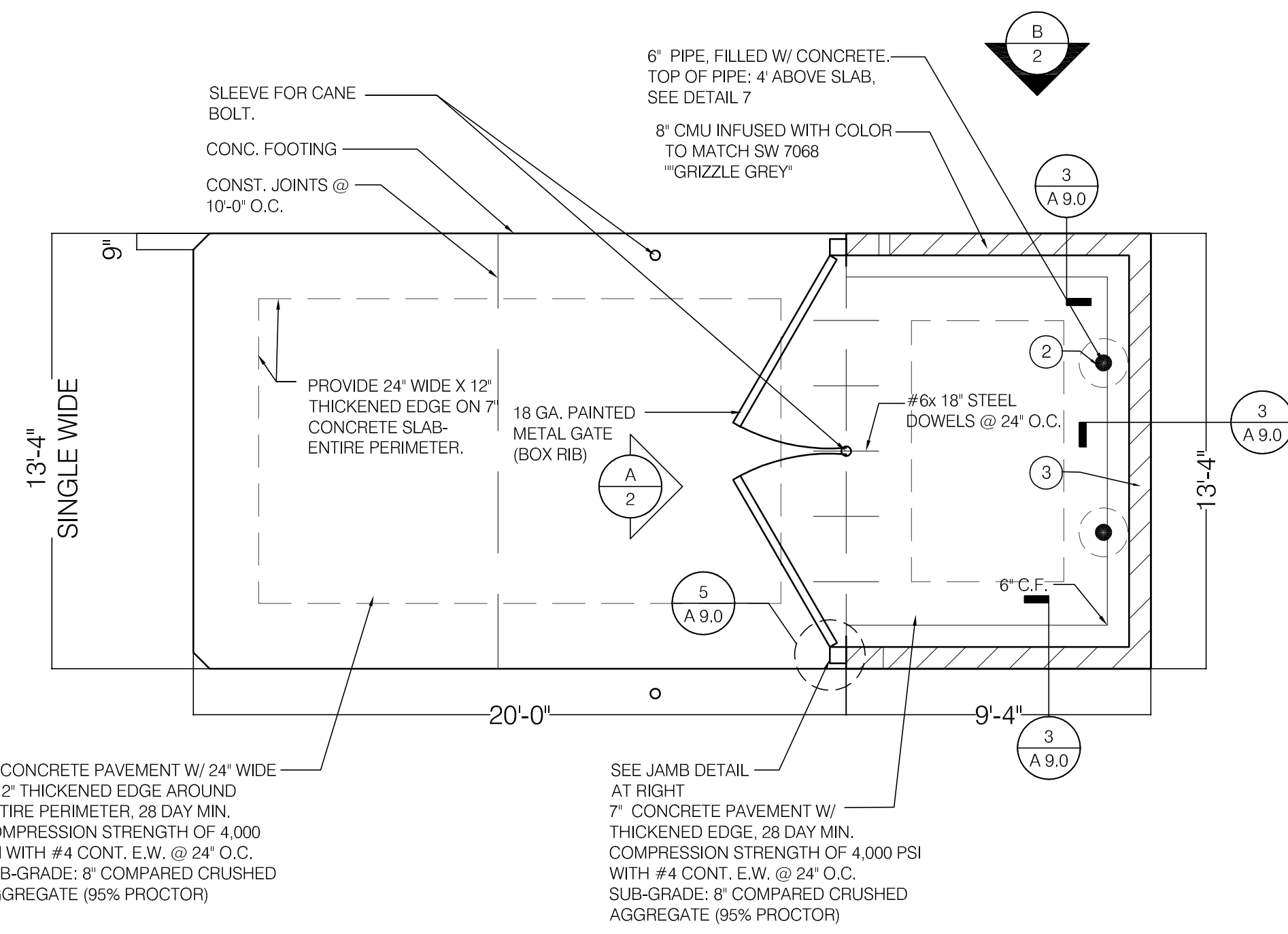
CORNER DIMENSIONS

RADIUS	A	B	C
15'-0"	12'-0"	4'-8"	1'-0"
18'-0"	12'-6"	4'-8"	1'-3"
20'-0"	12'-7"	4'-8"	1'-5"

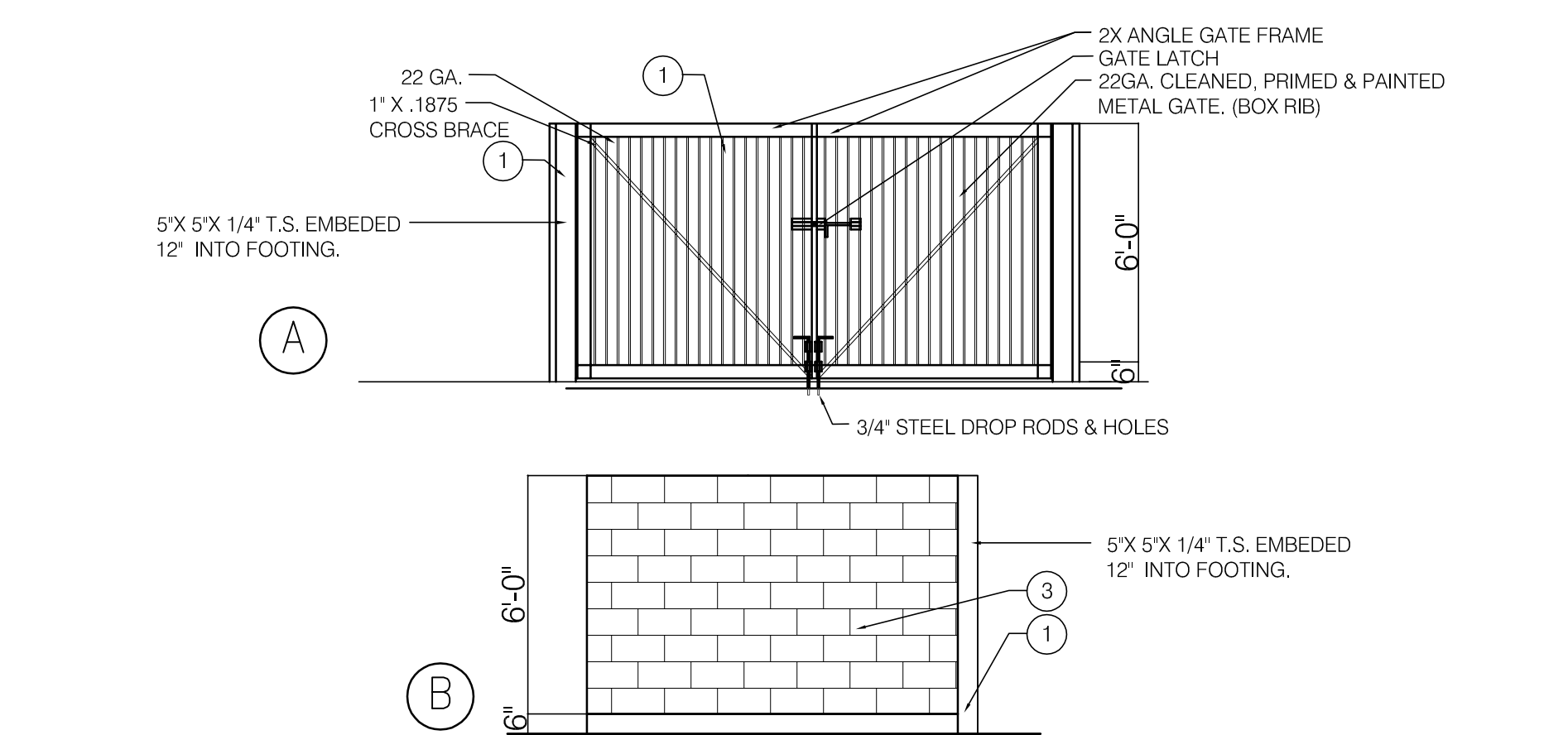
NOTES:
1. IF EXISTING OCB LOCATION IS TO BE REUSED, CENTERLINE OF OCB FOOTING CAN BE BETWEEN 1'-10" AND 2'-10" FROM THE FACE OF CURB.
2. CENTERLINE OF CANOPY FOOTING MUST BE WITHIN 18" OF FACE OF CURB.
3. ALL AREAS OF THE MB MUST BE VISIBLE TO DRIVER LOCATED AT OCB. ASSUME DRIVERS LOCATION IS 24" FROM FACE OF CURB, CENTERED ON OCB.
4. CENTER OF MB TO BE 9'-0" TO 12'-0" FROM DRIVERS POINT OF VIEW.



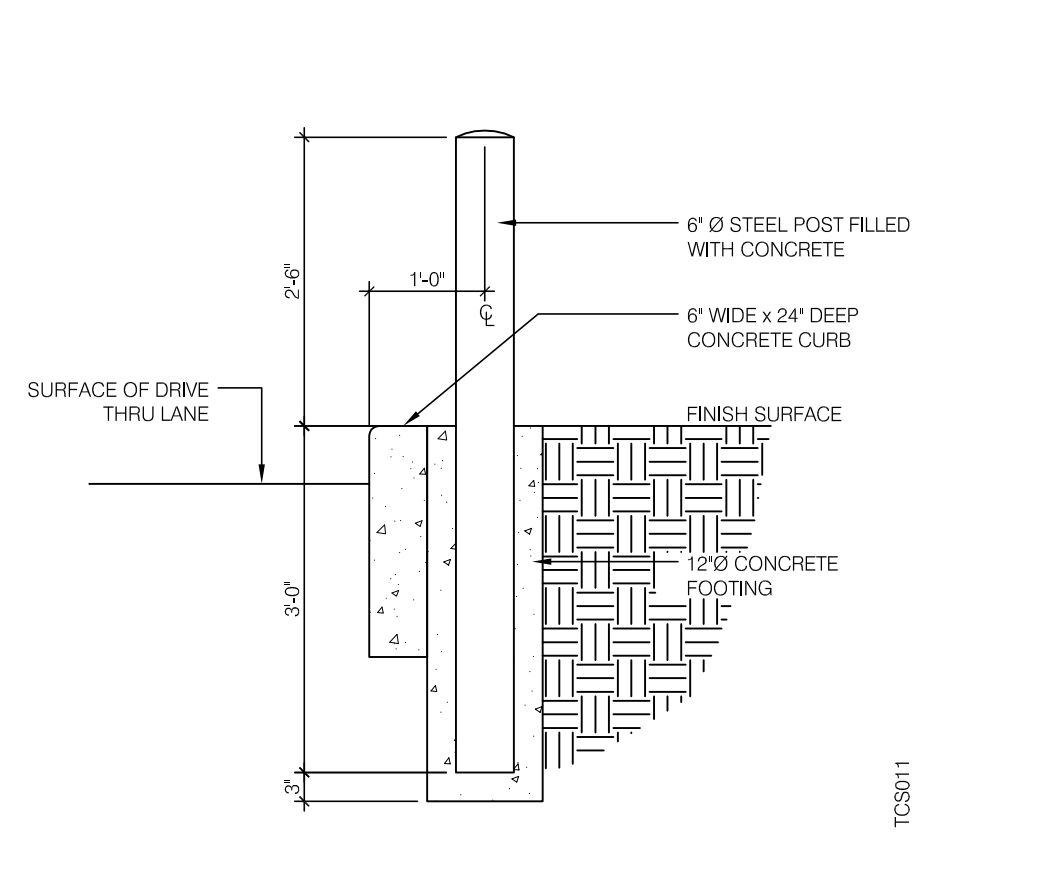
ENLARGED MENU BOARD DETAIL @ CURVED CURB N.T.S. **9**



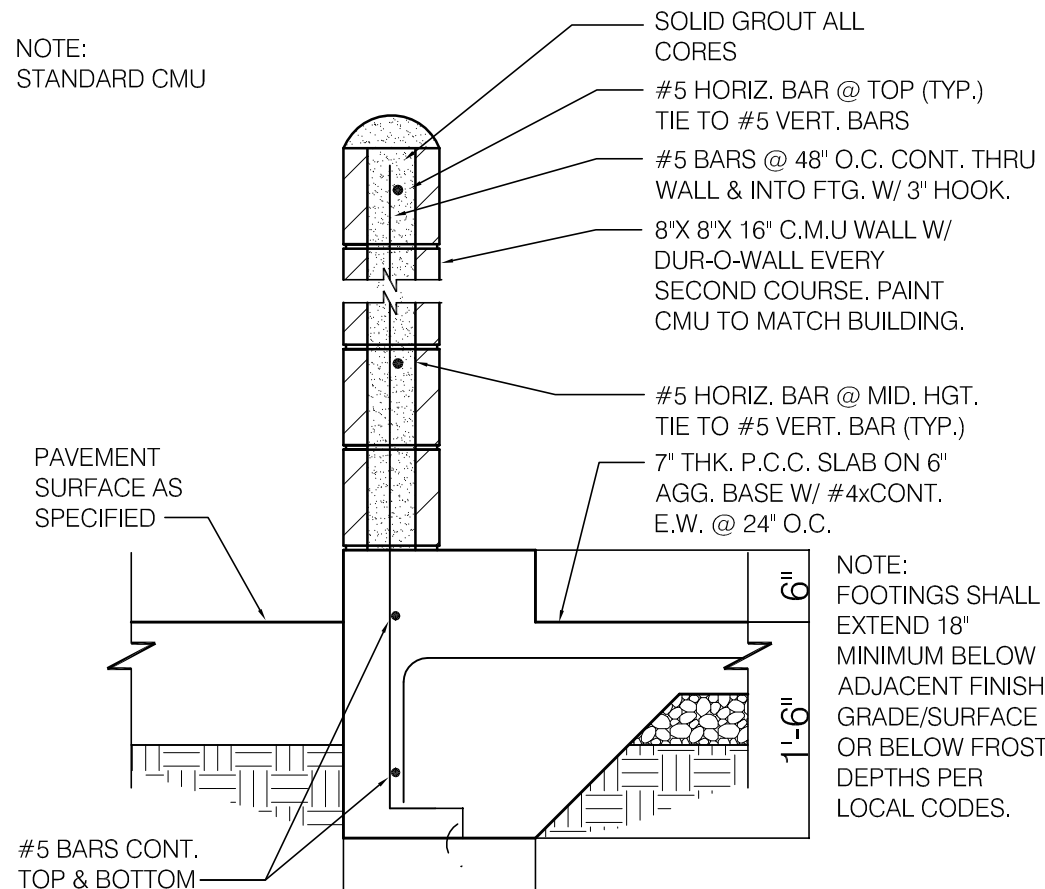
PLAN VIEW 1/4" = 1'-0" **1**



ELEVATION 1/4" = 1'-0" **2**



SPEAKER POST BOLLARD N.T.S. **4**



SECTION 3/4" = 1'-0" **3**



15034.000

REVISION	DATE
REVISION 1	09.30.2016
REVISION 2	10/14/16

CONTRACT DATE: 07.06.2016
BUILDING TYPE: CONVERSION
PLAN VERSION: FEBRUARY 2015
SITE NUMBER: XXX-XXX
STORE NUMBER: XXXXX

TACO BELL
1363 WASHINGTON AVE.
PORTLAND, ME



SITE DETAILS
A9.0

PLOT DATE: