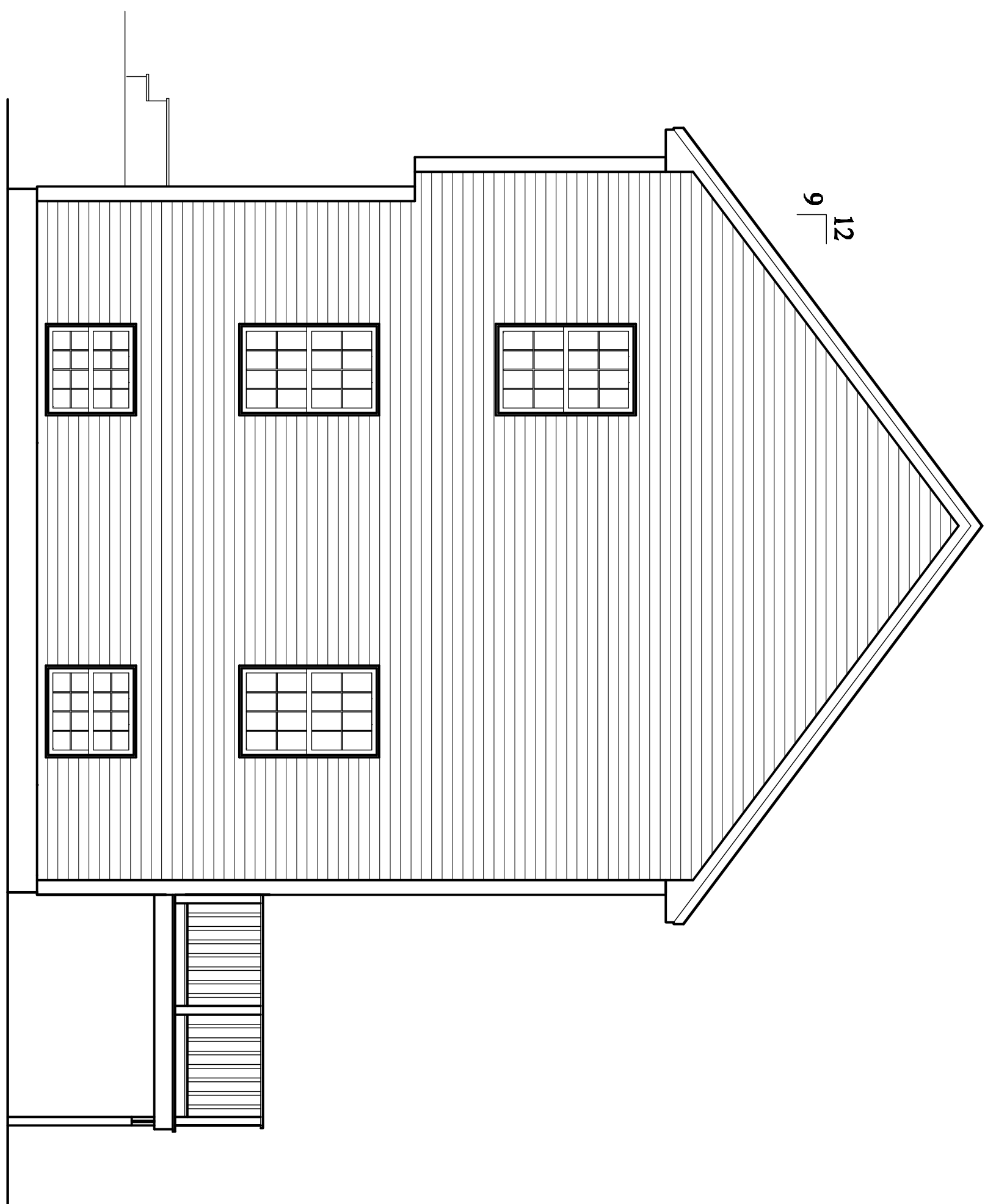
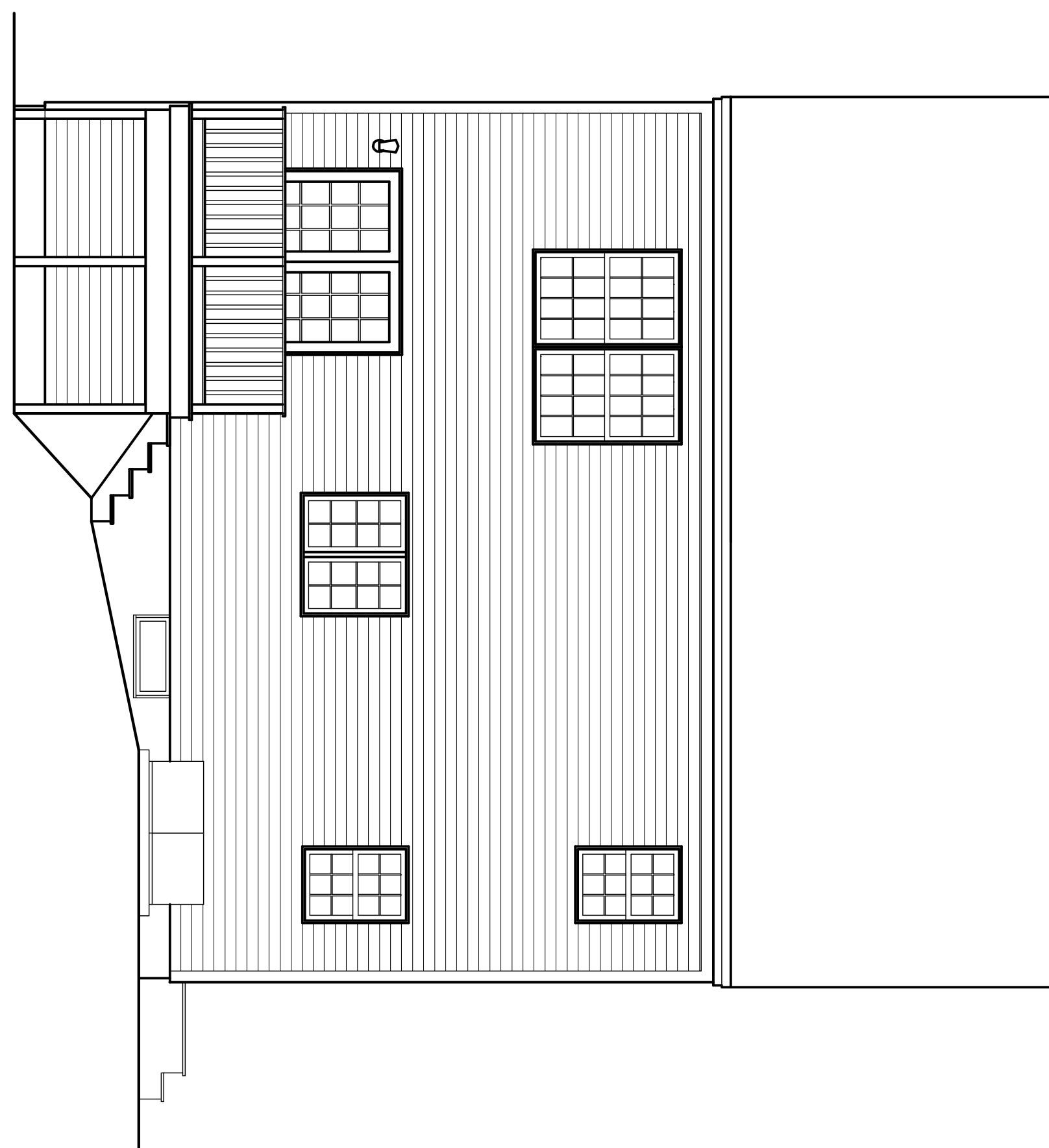


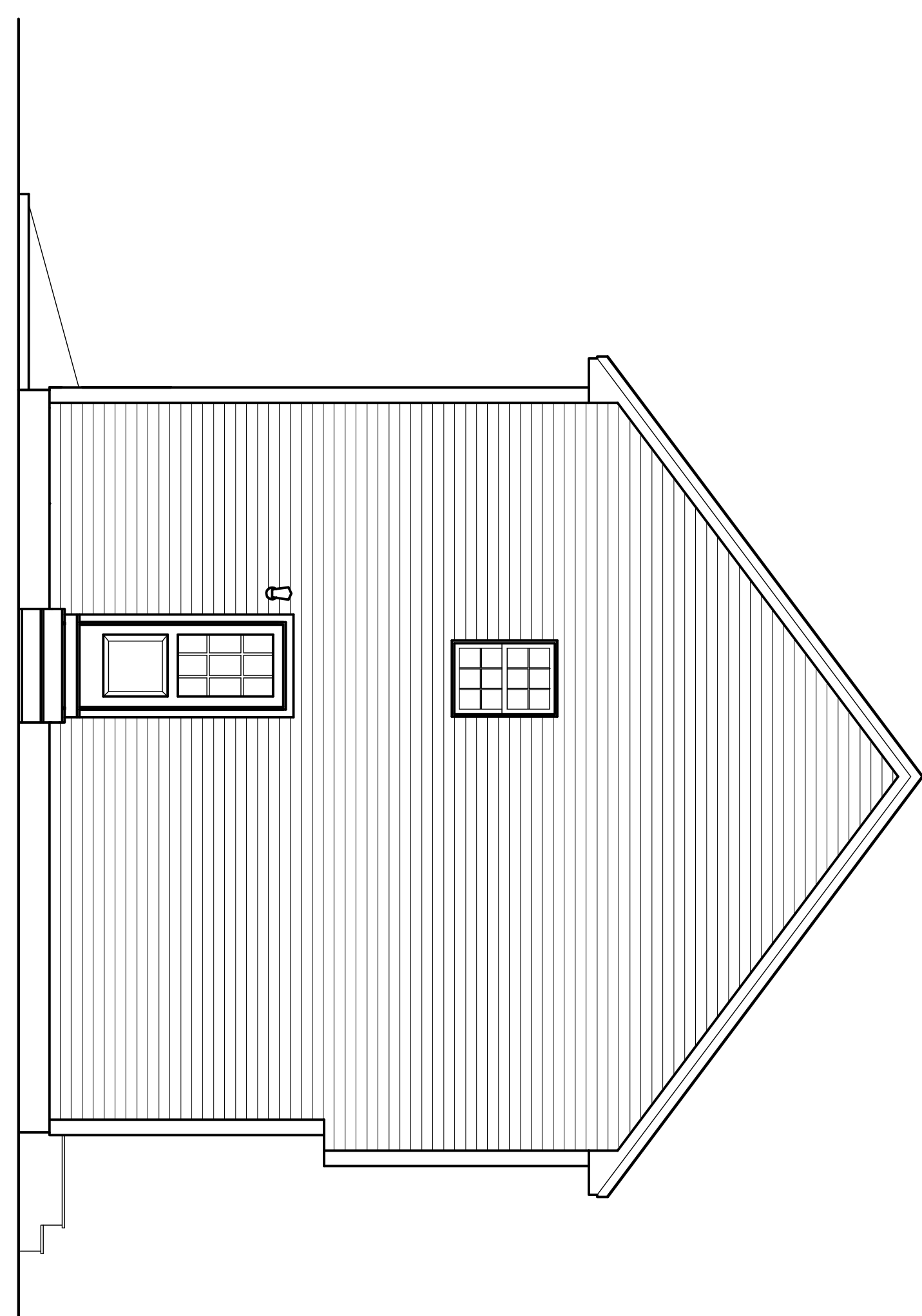
1 Front Elevation
1/4"=1'-0"



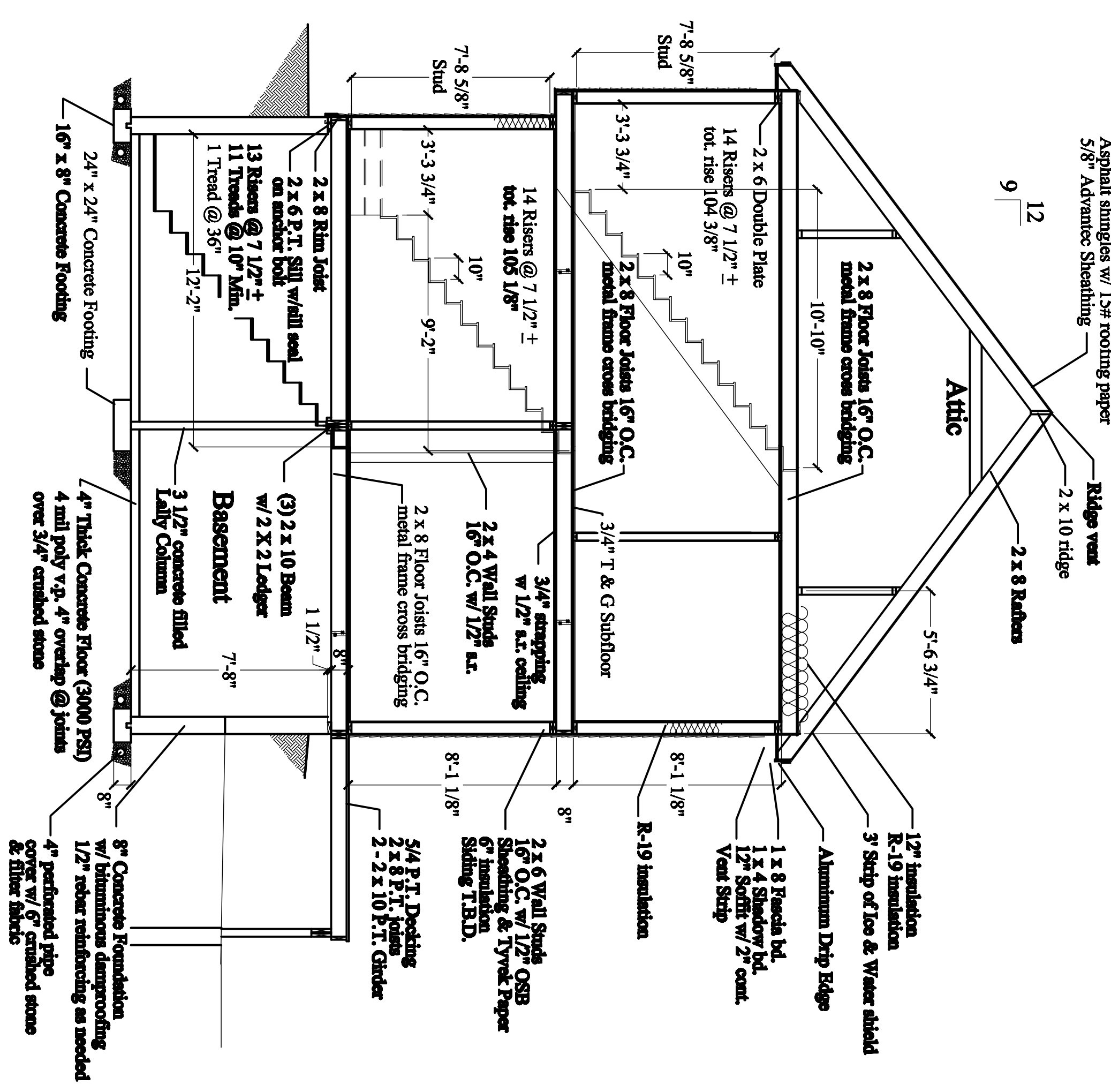
2 Side Elevation
1/4"=1'-0"




3 Rear Elevation
1/4"=1'-0"



4 Side Elevation
1/4"=1'-0"



5 Section
1/4"=1'-0"

 WENZEL BUILDERS INC. Wells, Maine 04090 (207) 846-3900	Project:	402 Ray Street Portland, Maine	Dwg# 1.0
	Title: Elevations		Date: 9-11-08 WV-1-08