

400-D-3

Ray Street

Faulbrock Woods

Faulbrock Inc.

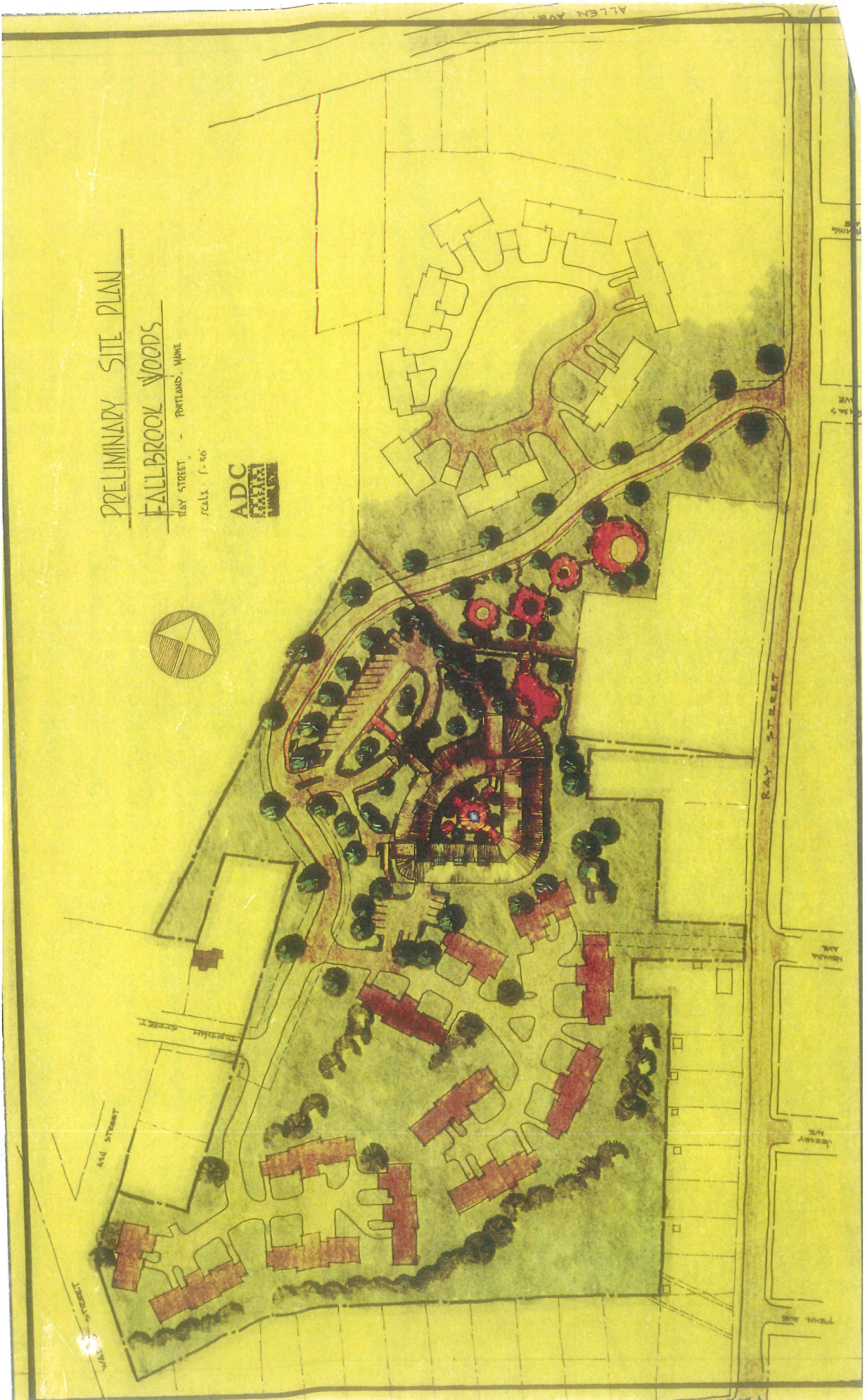
on Spreadsheet

PRELIMINARY SITE PLAN

FALLBROOK WOODS

RAY STREET - PORTLAND, MAINE

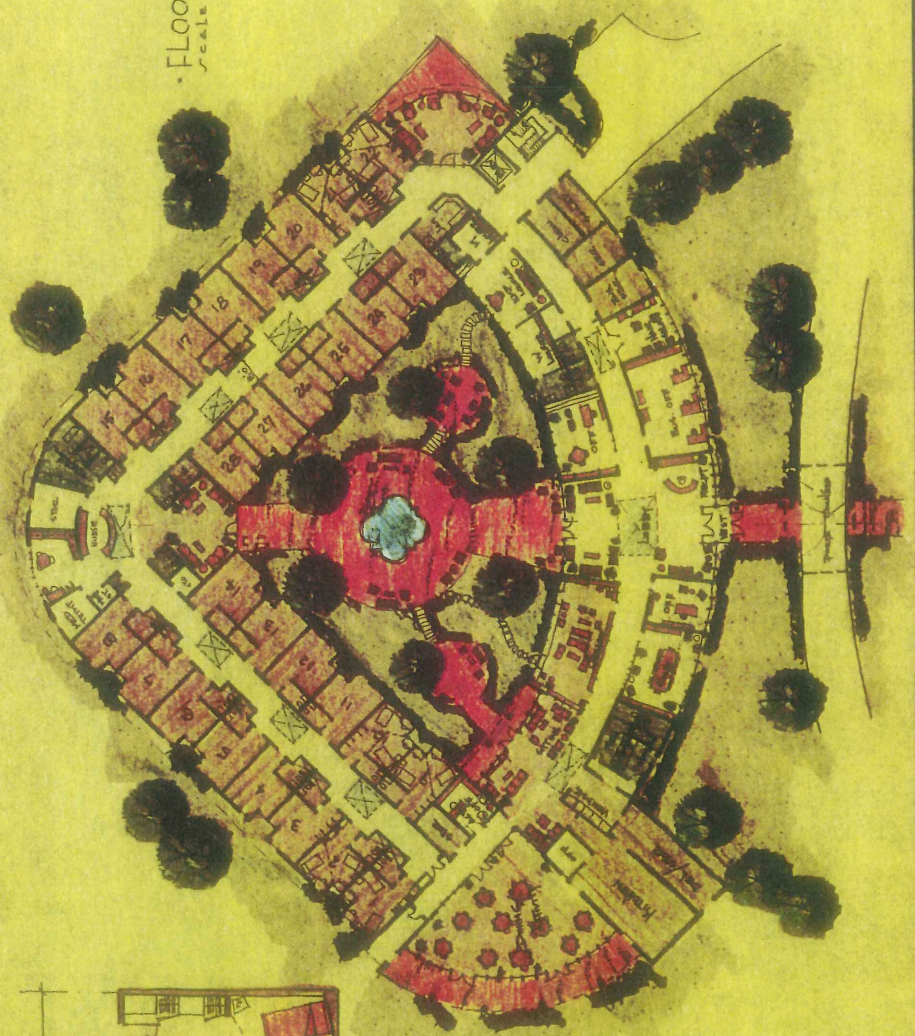
SCALE: 1" = 50'



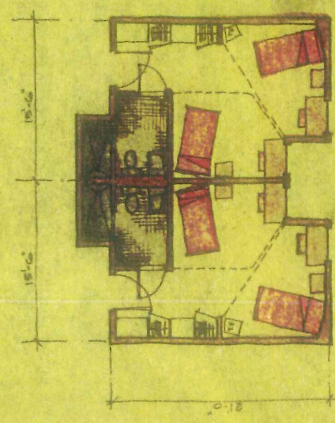


FRONT ELEVATION & ENTRANCE
Scale: 1/8" = 1'-0"

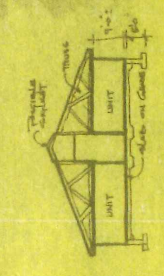
REAR ELEVATION - DINING - ACTIVITY - RIGHT
Scale: 1/8" = 1'-0"



FLOOR PLAN
Scale: 1/8" = 1'-0"



TYPICAL UNIT PLAN
Scale: 1/8" = 1'-0"



SECTION of UNITS
Scale: 1/8" = 1'-0"

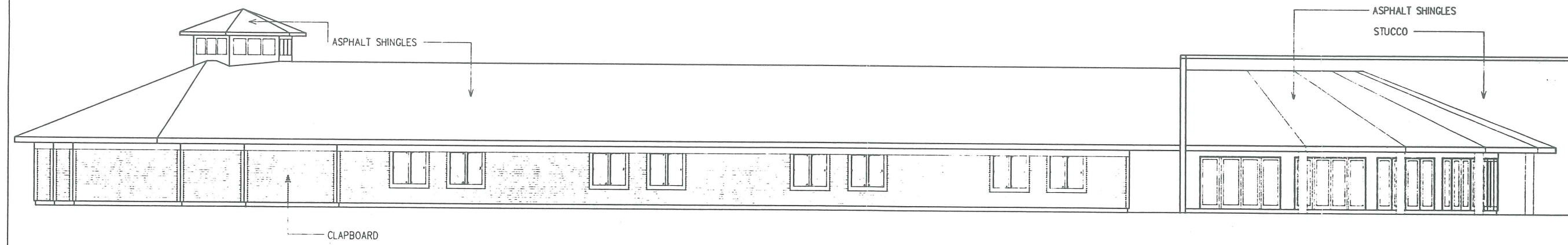
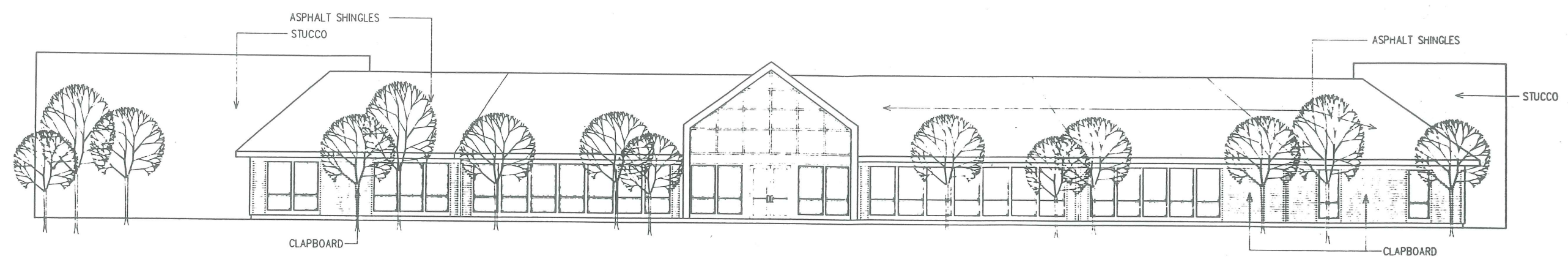
PRELIMINARY DESIGN SKETCHES

FALLBROOK

PORTLAND, OREGON
7-22-72



AAD
ARCHITECTURAL
DESIGN & CONCEPTS
INCORPORATED
 66 SALEM STREET
 BURLINGTON, MA 01803
 PHONE (603) 879-0000



PROJECT NO. 92302
 FILE NO. 3024301
 DRAWN BY: A M L
 CHECKED BY: B L C
 DATE:
 NO. REVISED DATE BY

EXTERIOR ELEVATIONS

FALLBROOK WOODS
PORTLAND, MAINE

SCALE: 1/8" = 1' 0"

DRAWING NUMBER:

A3.1

