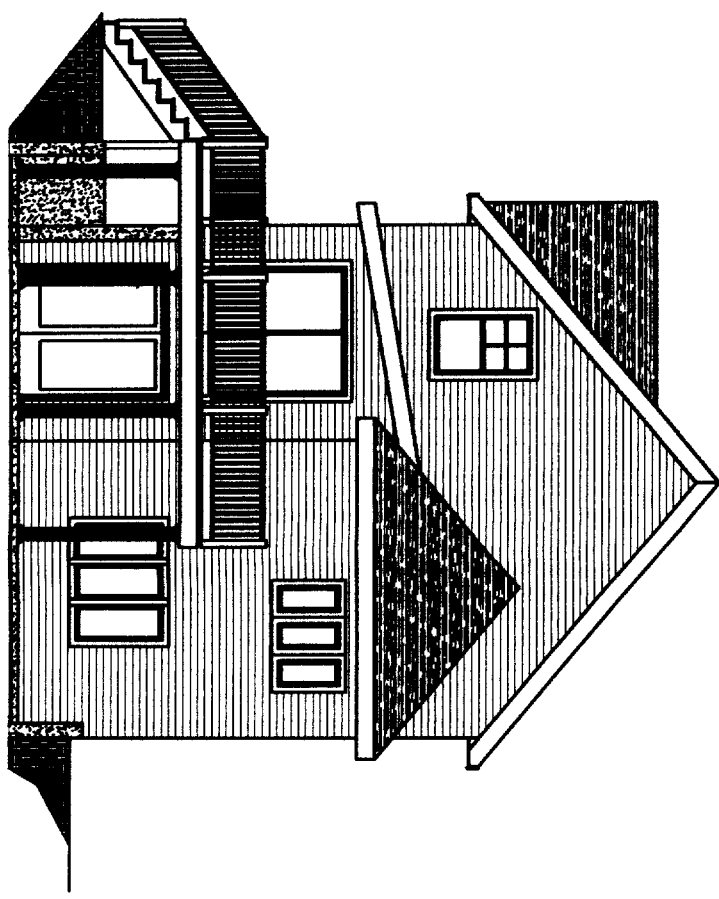


RIGHT SIDE - EXISTING HOUSE ELEVATION
1/4" = 1'-0"

ADDITIONAL INFO:
 ALL DIMENSIONS TO FACE UNLESS NOTED OTHERWISE.
 ALL MATERIALS TO BE APPROVED BY THE ARCHITECT.
 ALL FINISHES TO BE APPROVED BY THE ARCHITECT.
 ALL WORK TO BE DONE IN ACCORDANCE WITH THE
 CITY OF PORTLAND, ME. BUILDING DEPARTMENT.
 ALL WORK TO BE DONE IN ACCORDANCE WITH THE
 CITY OF PORTLAND, ME. BUILDING DEPARTMENT.
 ALL WORK TO BE DONE IN ACCORDANCE WITH THE
 CITY OF PORTLAND, ME. BUILDING DEPARTMENT.



REAR HOUSE ELEVATION
1/4" = 1'-0"

DEPT. OF BUILDING INSPECTION
 CITY OF PORTLAND, ME
 JUL 20 2006
RECEIVED

REVISIONS:	DATE	BY

Date: 07-19-06
 Scale: 1/4"=1'-0"
 Drawn By: PILL
 Project: A082705
 Sheet Number:
 1-of-2

THIS INFORMATION IS PROVIDED TO OUR CUSTOMERS AS A SERVICE OF HANCOCK LUMBER. CUSTOMERS SHOULD APPRECIATE, HOWEVER, THAT THIS INFORMATION IS NOT THE WORK PRODUCT OF ANY ARCHITECT, REGISTERED ARCHITECT, REGISTERED ENGINEER OR ANY OF ITS EMPLOYEES ARE REGISTERED ARCHITECTS WITHIN THE STATE OF MAINE, AND CUSTOMERS MAY WANT TO CONSULT WITH AN ARCHITECT BEFORE TAKING FINAL ACTION WITH REGARD TO ANY BUILDING OR STRUCTURE. CUSTOMERS SHOULD ALSO APPRECIATE THAT, BY PROVIDING CUSTOMERS WITH THIS INFORMATION, HANCOCK LUMBER DOES NOT GUARANTEE THE SOUNDNESS OR SUITABILITY OF THE INFORMATION FOR ANY PURPOSE OF THE CUSTOMER.

ELEVATIONS
 WESLEY JOHNSON
 31Summit St. Portland, ME





FOUNDATION
 WESLEY JOHNSON
 31 Summit St. Portland, ME

THIS INFORMATION IS PROVIDED TO OUR CUSTOMERS AS A SERVICE OF HANCOCK LUMBER. CUSTOMERS SHOULD APPRECIATE, HOWEVER, THAT THIS INFORMATION IS NOT THE WORK PRODUCT OF ANY ARCHITECT. NEITHER HANCOCK LUMBER NOR ANY OF ITS EMPLOYEES ARE REGISTERED ARCHITECTS WITHIN THE STATE OF MAINE, AND CUSTOMERS MAY WANT TO CONSULT WITH AN ARCHITECT BEFORE TAKING FINAL ACTION WITH REGARD TO ANY BUILDING. SUCH CUSTOMERS SHOULD ALSO APPRECIATE THAT, BY PROVIDING CUSTOMERS WITH THIS INFORMATION, HANCOCK LUMBER DOES NOT GUARANTEE THE SOUNDNESS OR SUITABILITY OF THE INFORMATION FOR ANY PURPOSE OF THE CUSTOMER.

Revisions:

Date: 07-19-06
 Scale: 1/4"=1'-0"
 Drawn By: PML
 Project: A1002706
 Sheet Number: 2-01-2

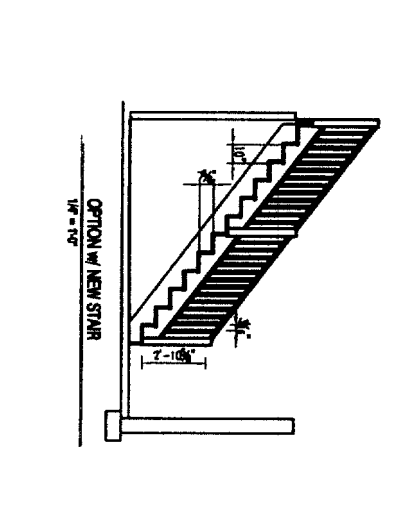
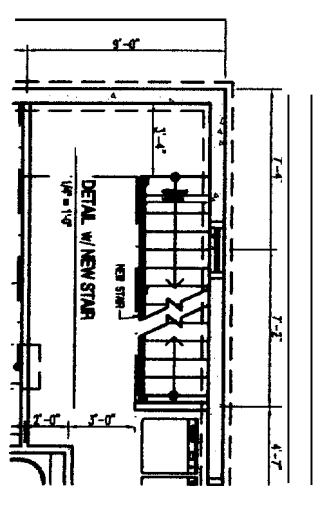
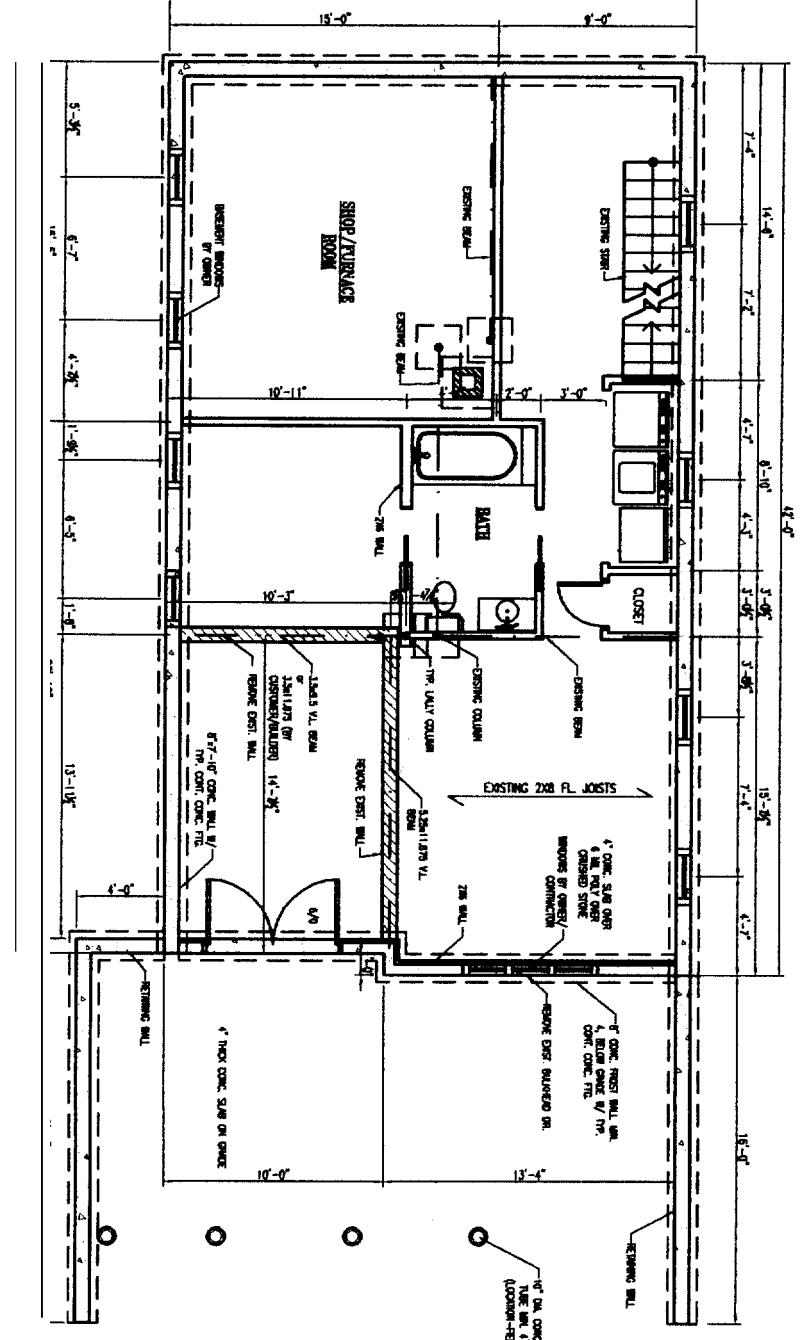
DESCRIPTION OF BUILDING	DESCRIPTION OF FINISHES	SPACING OF SYSTEMS
1. 4" CONCRETE SLAB ON GROUND	4" CONCRETE SLAB ON GROUND	6" ON CENTER
2. 1/2" GYPSUM BOARD	1/2" GYPSUM BOARD	16" ON CENTER
3. 1/2" GYPSUM BOARD	1/2" GYPSUM BOARD	16" ON CENTER
4. 1/2" GYPSUM BOARD	1/2" GYPSUM BOARD	16" ON CENTER
5. 1/2" GYPSUM BOARD	1/2" GYPSUM BOARD	16" ON CENTER
6. 1/2" GYPSUM BOARD	1/2" GYPSUM BOARD	16" ON CENTER
7. 1/2" GYPSUM BOARD	1/2" GYPSUM BOARD	16" ON CENTER
8. 1/2" GYPSUM BOARD	1/2" GYPSUM BOARD	16" ON CENTER
9. 1/2" GYPSUM BOARD	1/2" GYPSUM BOARD	16" ON CENTER
10. 1/2" GYPSUM BOARD	1/2" GYPSUM BOARD	16" ON CENTER
11. 1/2" GYPSUM BOARD	1/2" GYPSUM BOARD	16" ON CENTER
12. 1/2" GYPSUM BOARD	1/2" GYPSUM BOARD	16" ON CENTER

1. All work on this project shall be in accordance with the provisions of the International Building Code (IBC) and the International Residential Code (IRC) as adopted by the State of Maine. The code official shall have the authority to require any other code or standard that may be applicable to the project.

2. All work on this project shall be in accordance with the provisions of the International Building Code (IBC) and the International Residential Code (IRC) as adopted by the State of Maine. The code official shall have the authority to require any other code or standard that may be applicable to the project.

3. All work on this project shall be in accordance with the provisions of the International Building Code (IBC) and the International Residential Code (IRC) as adopted by the State of Maine. The code official shall have the authority to require any other code or standard that may be applicable to the project.

ORDER QUANTITY AND HEIGHT	ORDER QUANTITY AND HEIGHT	ORDER QUANTITY AND HEIGHT	ORDER QUANTITY AND HEIGHT
1. 4" CONCRETE SLAB ON GROUND	1. 4" CONCRETE SLAB ON GROUND	1. 4" CONCRETE SLAB ON GROUND	1. 4" CONCRETE SLAB ON GROUND
2. 1/2" GYPSUM BOARD	2. 1/2" GYPSUM BOARD	2. 1/2" GYPSUM BOARD	2. 1/2" GYPSUM BOARD
3. 1/2" GYPSUM BOARD	3. 1/2" GYPSUM BOARD	3. 1/2" GYPSUM BOARD	3. 1/2" GYPSUM BOARD
4. 1/2" GYPSUM BOARD	4. 1/2" GYPSUM BOARD	4. 1/2" GYPSUM BOARD	4. 1/2" GYPSUM BOARD
5. 1/2" GYPSUM BOARD	5. 1/2" GYPSUM BOARD	5. 1/2" GYPSUM BOARD	5. 1/2" GYPSUM BOARD
6. 1/2" GYPSUM BOARD	6. 1/2" GYPSUM BOARD	6. 1/2" GYPSUM BOARD	6. 1/2" GYPSUM BOARD
7. 1/2" GYPSUM BOARD	7. 1/2" GYPSUM BOARD	7. 1/2" GYPSUM BOARD	7. 1/2" GYPSUM BOARD
8. 1/2" GYPSUM BOARD	8. 1/2" GYPSUM BOARD	8. 1/2" GYPSUM BOARD	8. 1/2" GYPSUM BOARD
9. 1/2" GYPSUM BOARD	9. 1/2" GYPSUM BOARD	9. 1/2" GYPSUM BOARD	9. 1/2" GYPSUM BOARD
10. 1/2" GYPSUM BOARD	10. 1/2" GYPSUM BOARD	10. 1/2" GYPSUM BOARD	10. 1/2" GYPSUM BOARD
11. 1/2" GYPSUM BOARD	11. 1/2" GYPSUM BOARD	11. 1/2" GYPSUM BOARD	11. 1/2" GYPSUM BOARD
12. 1/2" GYPSUM BOARD	12. 1/2" GYPSUM BOARD	12. 1/2" GYPSUM BOARD	12. 1/2" GYPSUM BOARD



TYPICAL FOUNDATION WALL DETAIL
 1/4" = 1'-0"

OPTIONAL NEW STAIR
 1/4" = 1'-0"

EXISTENTIAL NOTES:

- ALL WORK SHALL BE IN ACCORDANCE WITH THE PROVISIONS OF THE INTERNATIONAL BUILDING CODE (IBC) AND THE INTERNATIONAL RESIDENTIAL CODE (IRC) AS ADOPTED BY THE STATE OF MAINE.
- ALL WORK SHALL BE IN ACCORDANCE WITH THE PROVISIONS OF THE INTERNATIONAL BUILDING CODE (IBC) AND THE INTERNATIONAL RESIDENTIAL CODE (IRC) AS ADOPTED BY THE STATE OF MAINE.
- ALL WORK SHALL BE IN ACCORDANCE WITH THE PROVISIONS OF THE INTERNATIONAL BUILDING CODE (IBC) AND THE INTERNATIONAL RESIDENTIAL CODE (IRC) AS ADOPTED BY THE STATE OF MAINE.
- ALL WORK SHALL BE IN ACCORDANCE WITH THE PROVISIONS OF THE INTERNATIONAL BUILDING CODE (IBC) AND THE INTERNATIONAL RESIDENTIAL CODE (IRC) AS ADOPTED BY THE STATE OF MAINE.
- ALL WORK SHALL BE IN ACCORDANCE WITH THE PROVISIONS OF THE INTERNATIONAL BUILDING CODE (IBC) AND THE INTERNATIONAL RESIDENTIAL CODE (IRC) AS ADOPTED BY THE STATE OF MAINE.
- ALL WORK SHALL BE IN ACCORDANCE WITH THE PROVISIONS OF THE INTERNATIONAL BUILDING CODE (IBC) AND THE INTERNATIONAL RESIDENTIAL CODE (IRC) AS ADOPTED BY THE STATE OF MAINE.
- ALL WORK SHALL BE IN ACCORDANCE WITH THE PROVISIONS OF THE INTERNATIONAL BUILDING CODE (IBC) AND THE INTERNATIONAL RESIDENTIAL CODE (IRC) AS ADOPTED BY THE STATE OF MAINE.
- ALL WORK SHALL BE IN ACCORDANCE WITH THE PROVISIONS OF THE INTERNATIONAL BUILDING CODE (IBC) AND THE INTERNATIONAL RESIDENTIAL CODE (IRC) AS ADOPTED BY THE STATE OF MAINE.
- ALL WORK SHALL BE IN ACCORDANCE WITH THE PROVISIONS OF THE INTERNATIONAL BUILDING CODE (IBC) AND THE INTERNATIONAL RESIDENTIAL CODE (IRC) AS ADOPTED BY THE STATE OF MAINE.
- ALL WORK SHALL BE IN ACCORDANCE WITH THE PROVISIONS OF THE INTERNATIONAL BUILDING CODE (IBC) AND THE INTERNATIONAL RESIDENTIAL CODE (IRC) AS ADOPTED BY THE STATE OF MAINE.
- ALL WORK SHALL BE IN ACCORDANCE WITH THE PROVISIONS OF THE INTERNATIONAL BUILDING CODE (IBC) AND THE INTERNATIONAL RESIDENTIAL CODE (IRC) AS ADOPTED BY THE STATE OF MAINE.
- ALL WORK SHALL BE IN ACCORDANCE WITH THE PROVISIONS OF THE INTERNATIONAL BUILDING CODE (IBC) AND THE INTERNATIONAL RESIDENTIAL CODE (IRC) AS ADOPTED BY THE STATE OF MAINE.
- ALL WORK SHALL BE IN ACCORDANCE WITH THE PROVISIONS OF THE INTERNATIONAL BUILDING CODE (IBC) AND THE INTERNATIONAL RESIDENTIAL CODE (IRC) AS ADOPTED BY THE STATE OF MAINE.
- ALL WORK SHALL BE IN ACCORDANCE WITH THE PROVISIONS OF THE INTERNATIONAL BUILDING CODE (IBC) AND THE INTERNATIONAL RESIDENTIAL CODE (IRC) AS ADOPTED BY THE STATE OF MAINE.
- ALL WORK SHALL BE IN ACCORDANCE WITH THE PROVISIONS OF THE INTERNATIONAL BUILDING CODE (IBC) AND THE INTERNATIONAL RESIDENTIAL CODE (IRC) AS ADOPTED BY THE STATE OF MAINE.

