



SILFAB

SLA-M 280/285/290/295/300



The Silfab SLA-M 60-cell monocrystalline module series is the result of the experience of the Silfab technical team, specialized in the entire photovoltaic value chain, with modules produced and operating for over 33 years.

The SLA-M modules are ideal for ground-mount, roof-top and solar tracking installations where maximum power density is preferred.

Maximum Efficiency

60 of the highest efficiency, best quality monocrystalline cells result in a maximum power rating of up to 300 Wp.

Positive Tolerance

(-0/+5W) module sorting achieves the maximum electrical performance of the PV system.

Industry Experts

Silfab's technical team has specialized experience in the entire photovoltaic value chain, with modules produced and operating for over 33 years.

Highest Automation

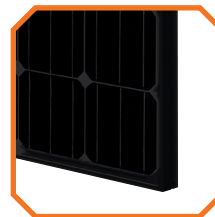
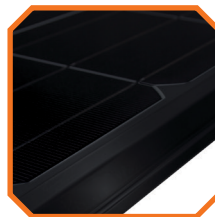
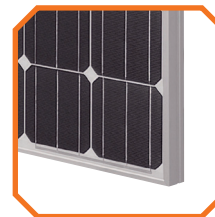
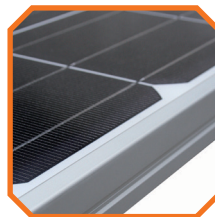
Strict quality controls during each step at one of the world's most automated module production facilities.

Increased Quality

Top quality materials and 100% EL testing guarantee a trustworthy 25-year performance warranty.

Reduced Weight

Engineered to accommodate low load bearing structures while maintaining highly durable mechanical characteristics including a maximum loading of 5400 Pa.



Available in Black

