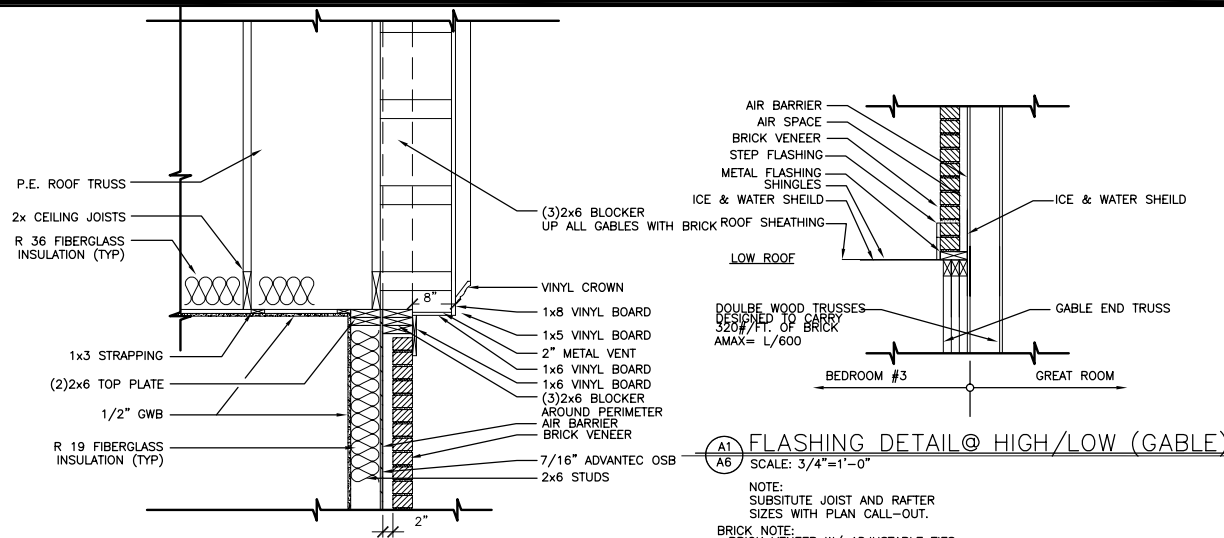


1 FOOTING DETAIL

S1 SCALE: 3/4"=1'-0"

NOTE: SUBSTITUTE FOOTING AND WALL SIZES WITH PLAN CALL-OUT.



A1 FLASHING DETAIL @ HIGH/LOW (GABLE)

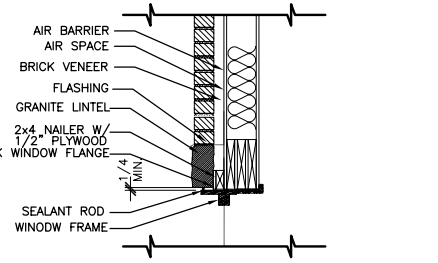
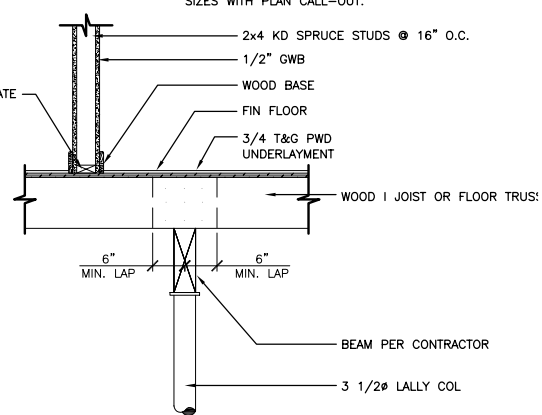
A6 SCALE: 3/4"=1'-0"

NOTE: SUBSTITUTE JOIST AND RAFTER SIZES WITH PLAN CALL-OUT.
BRICK NOTE: BRICK VENEER W/ ADJUSTABLE TIES 1. TIE FOR EVERY 2.67 SQ. FT. OF WALL AREA TIES TO BE FASTENED W/ EXTERIOR SCREWS TO WALL (TYP.)

3A RAKE DETAIL GABLE ENDS ONLY

S1 SCALE: 3/4"=1'-0"

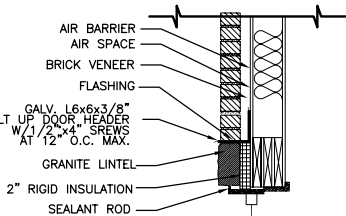
NOTE: SUBSTITUTE JOIST AND RAFTER SIZES WITH PLAN CALL-OUT.



A2 DETAIL @ WINDOWS

A6 SCALE: 3/4"=1'-0"

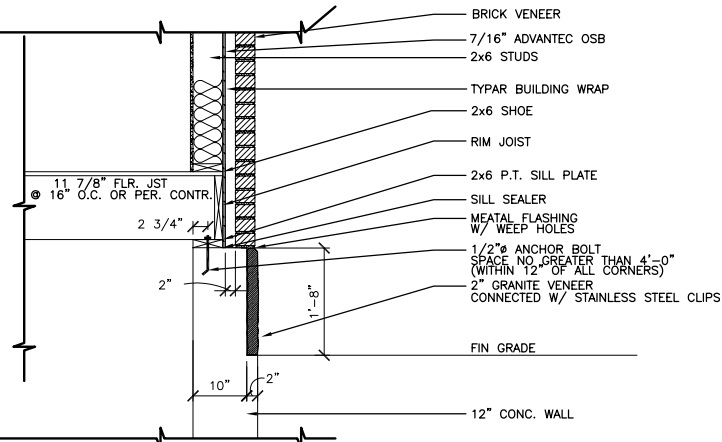
NOTE: SUBSTITUTE JOIST AND RAFTER SIZES WITH PLAN CALL-OUT.
BRICK NOTE: BRICK VENEER W/ ADJUSTABLE TIES 1. TIE FOR EVERY 2.67 SQ. FT. OF WALL AREA TIES TO BE FASTENED W/ EXTERIOR SCREWS TO WALL (TYP.)



A4 SECTION @ FRONT DOOR

A6 SCALE: 3/4"=1'-0"

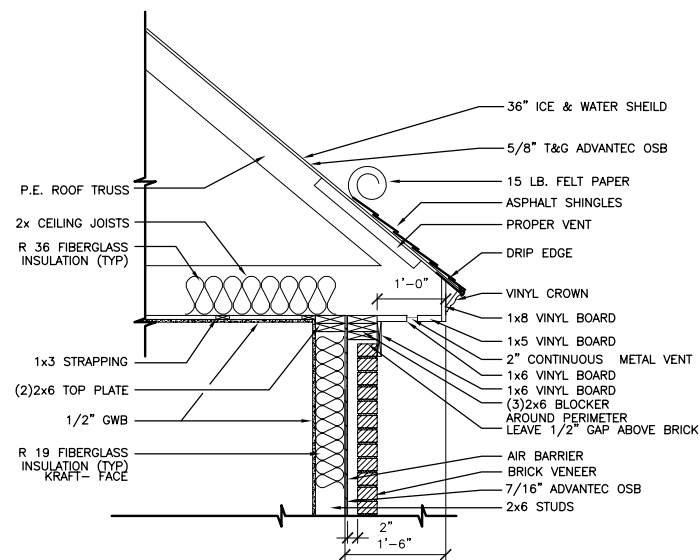
NOTE: SUBSTITUTE JOIST AND RAFTER SIZES WITH PLAN CALL-OUT.
BRICK NOTE: BRICK VENEER W/ ADJUSTABLE TIES 1. TIE FOR EVERY 2.67 SQ. FT. OF WALL AREA TIES TO BE FASTENED W/ EXTERIOR SCREWS TO WALL (TYP.)



2 WALL BASE DETAIL

S1 SCALE: 3/4"=1'-0"

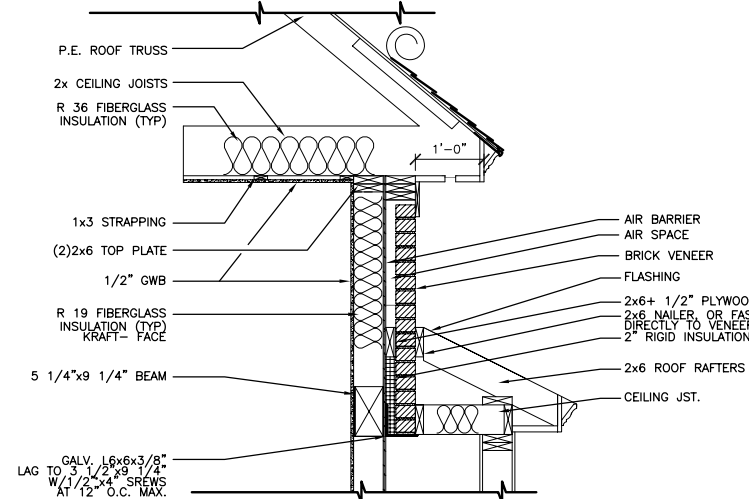
NOTE: SUBSTITUTE JOIST AND RAFTER SIZES WITH PLAN CALL-OUT.



3 SOFFIT DETAIL

S1 SCALE: 3/4"=1'-0"

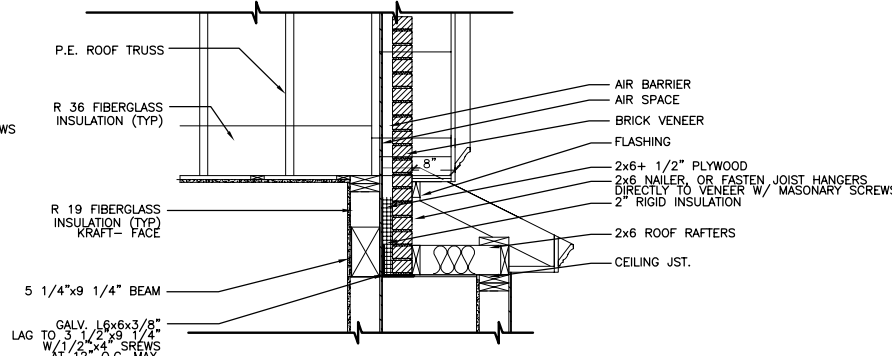
NOTE: SUBSTITUTE JOIST AND RAFTER SIZES WITH PLAN CALL-OUT.
BRICK NOTE: BRICK VENEER W/ ADJUSTABLE TIES 1. TIE FOR EVERY 2.67 SQ. FT. OF WALL AREA TIES TO BE FASTENED W/ EXTERIOR SCREWS TO WALL (TYP.)



A3 SECTION @ WINDOW KITCHEN BUMP OUTS

A6 SCALE: 3/4"=1'-0"

NOTE: SUBSTITUTE JOIST AND RAFTER SIZES WITH PLAN CALL-OUT.
BRICK NOTE: BRICK VENEER W/ ADJUSTABLE TIES 1. TIE FOR EVERY 2.67 SQ. FT. OF WALL AREA TIES TO BE FASTENED W/ EXTERIOR SCREWS TO WALL (TYP.)



A5 SECTION @ MASTER BEDROOM WINDOW BUMP OUT

A6 SCALE: 3/4"=1'-0"

NOTE: SUBSTITUTE JOIST AND RAFTER SIZES WITH PLAN CALL-OUT.
BRICK NOTE: BRICK VENEER W/ ADJUSTABLE TIES 1. TIE FOR EVERY 2.67 SQ. FT. OF WALL AREA TIES TO BE FASTENED W/ EXTERIOR SCREWS TO WALL (TYP.)

Table R602.3(1) Fastener Schedule for Structural Members

Description of Building Elements	Number and Spacing of Fasteners	Type of Fastener (a,b,c,d)
Joist to sill or girder, toe nail	-	3-8d
1" x 6" subfloor or less to each joist, face nail	-	2-8d
2" subfloor to joist or girder, blind and face nail	-	2 staples, 1 1/4"
Sole plate to joist or blocking, face nail	-	2-16d
Top or sole plate to stud, end nail	-	1-6d
Stud to sole plate, toe nail	-	2-16d
Double studs, face nail	-	3-8d or 2-16d
Double top plates, face nail	-	10d
Sole plate to joist or blocking at braced wall panels	-	10d
Double top plates, minimum 24inch offset of end joints, face nail in lapped area	-	3-16d
Blocking between joists or rafters to top plate	-	8-16d
Rim joist to top plate, toe nail	-	3-8d
Top plates, laps at corners and intersections, face nail	-	8d
Built-up header, two pieces with 1/2" spacer	-	2-10d
Continued header, two pieces	-	1-6d
Ceiling joists to plate, toe nail	-	1-6d
Continuous header to stud, toe nail	-	1-6d
Ceiling joist, laps over partitions, face nail	-	3-8d
Ceiling joist to parallel rafters, face nail	-	4-8d
Rafter to plate, toe nail	-	3-10d
1" brace to each stud/nd plate, face nail	-	2-16d
1" x 6" sheathing to each bearing, face nail	-	2-8d
1" x 8" sheathing to each bearing, face nail	-	2 staples, 1 1/4"
Wider than 1" x 8" sheathing to each bearing, face nail	-	2 staples, 1 1/4"
Built-up corner studs	-	2-8d
Built-up girders and beams, 2inch lumber layers	-	3 staples, 1 1/4"
2" planks	-	4 staples, 1 1/4"
Roof rafters to ridge, valley or hip rafters:	-	10d
Toe nail	-	32" o.c. at top and bottom and staggered. Two nails at ends and at each splice.
Face nail	-	At each bearing
Rafter ties to rafters, face	-	2-16d
	-	4-16d
	-	3-16d
	-	3-8d

THIS P.E. REVIEW COVERS STRUCTURAL FRAMING MEMBERS DENOTED BY (ADP) ONLY. DESIGN AND DETAIL FOR FOUNDATION ELEMENTS, FRAMING CONNECTIONS (UNLESS OTHERWISE NOTED), COMPONENTS AND CLADDING, FINISHES, FLOOR PLAN LAYOUT, AND LIFE SAFETY CODE REQUIREMENTS HAVE NOT BEEN REVIEWED AND ARE BEYOND THE PURVIEW OF THIS P.E. SEAL. USE OF THESE DRAWINGS INDICATES OWNER/CONTRACTOR AGREEMENT TO THESE TERMS.

- NOTES:
- ALL BEAMS ARE 1.9E PARALAMS UNLESS OTHERWISE NOTED.
 - ALL SPECIFIED HEADER POST ARE "JACK STUDS" & SHOULD EXTEND TO THE UNDERSIDE OF HEADER. CONTRACTOR SHOULD PROVIDE (1) 2xKING STUD.
 - QUANTITY OF (2) 2x S BUILT UP POSTS ARE NUMBER REQ'D @ EACH END OF HEADER UNLESS OTHERWISE NOTED.
 - ALL NEW STRUCTURAL POSTS SHALL CONTINUE DOWN TO NEXT FLOOR LEVEL.
 - GENERAL CONTRACTOR TO COMPLY WITH BOCA 1999 TABLE 2305.2 FASTENING SCHEDULE.
 - ALL STRUCTURAL STEEL TO BE ASTM 992 FY=50 KSI.

DETAILS AND SPECIFICATIONS

CHAMBERLAIN CONSTRUCTION

1022 PORTLAND ROAD
SACO ME
PHONE: 262-7577

Builders Name and Address

2	8/29/05	ENGINEER REV.
	8/17/05	
		FINAL
No.	Revision/Issue	Date

Project	WHITE	Sheet	DS
Date	5/19/05		
Scale	1/4"=1'-0"		