

PROPERTY LINE

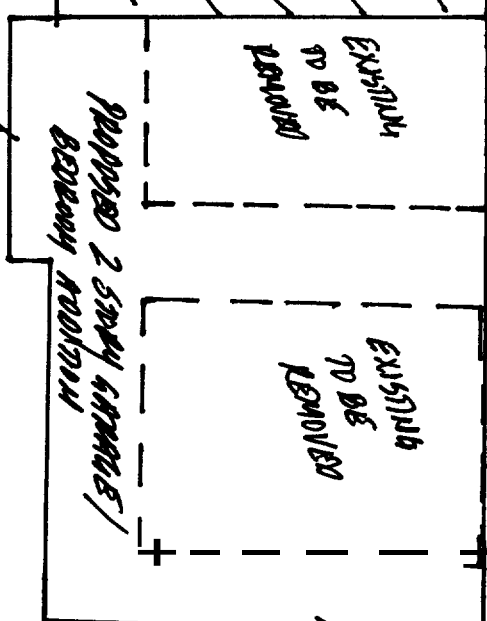
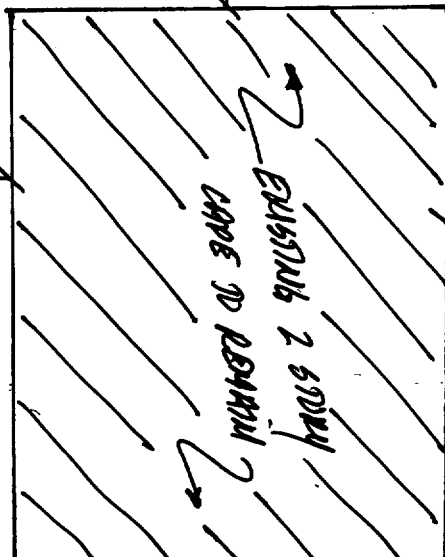
36'

36'

14-433

OK to reduce to 10' location of accommodate usable garage.

12'

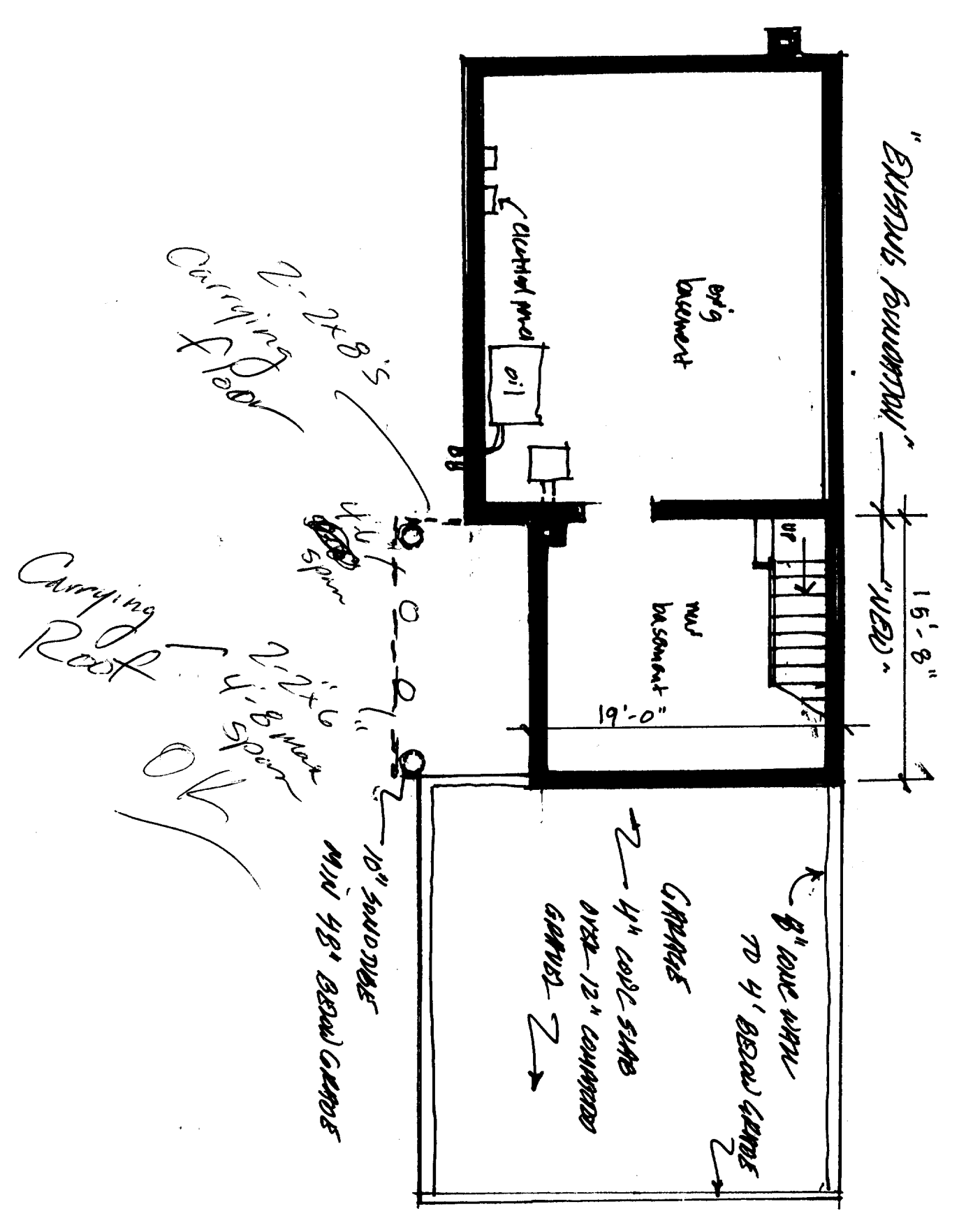


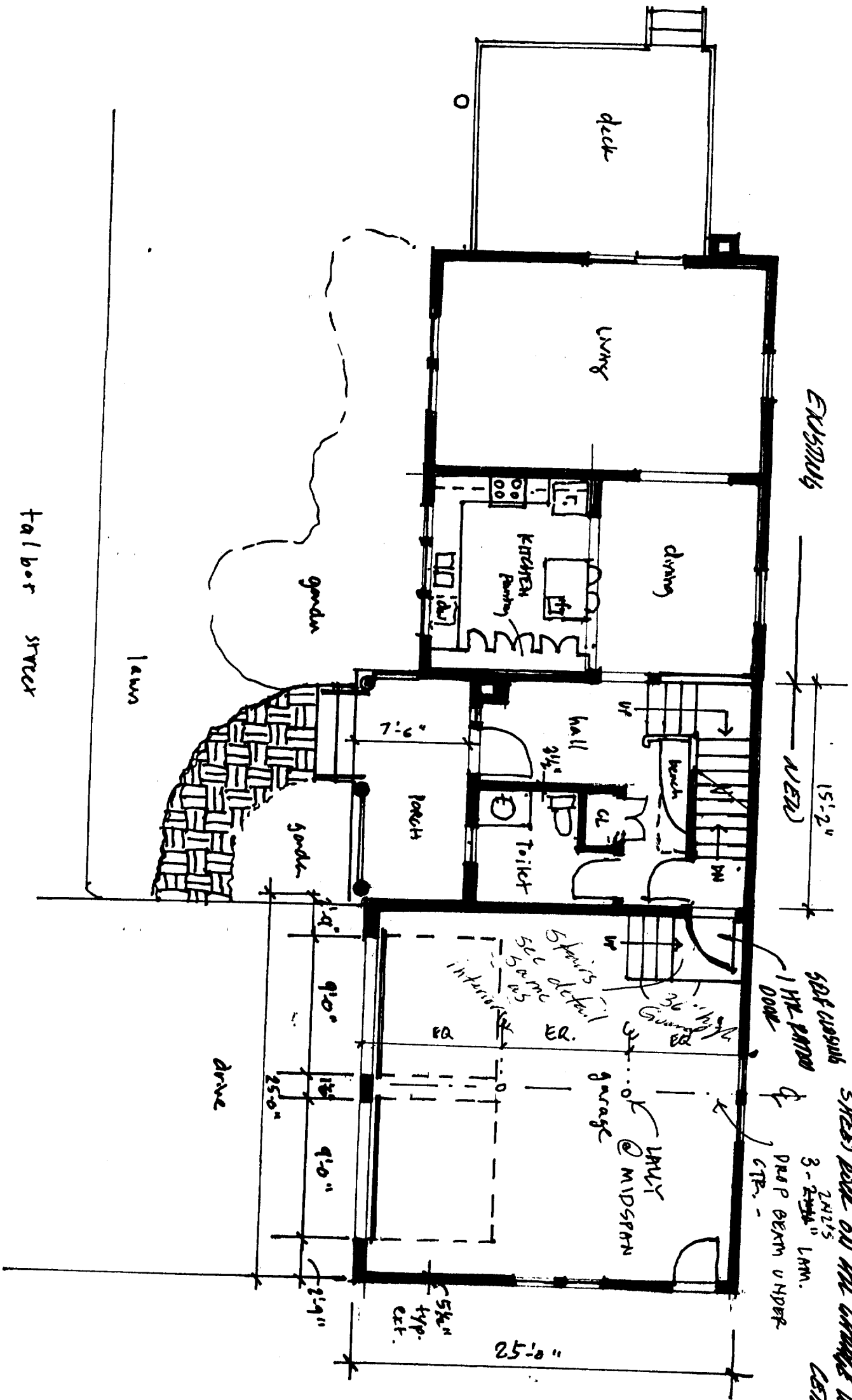
28'

118'



TALBOR VILLAGE





fall boat street

EXHIBIT

15'-2"

5/8" TYP X FINE CORR

SHEET OVER ALL THE GARAGE WORKS & CEILING

SELF CLOSING
1 1/2" PANDOR
DOOR
DRAPE BEAM UPPER
CTR.

25'-0"

drive

lawn

garden

garden

7'-6"

3'-6"

7'-6"

9'-0"

9'-0"

9'-0"

9'-0"

9'-0"

9'-0"

9'-0"

9'-0"

9'-0"

9'-0"

9'-0"

9'-0"

9'-0"

9'-0"

9'-0"

9'-0"

9'-0"

9'-0"

9'-0"

9'-0"

9'-0"

9'-0"

9'-0"

9'-0"

9'-0"

9'-0"

9'-0"

9'-0"

9'-0"

9'-0"

9'-0"

9'-0"

9'-0"

9'-0"

9'-0"

9'-0"

9'-0"

9'-0"

9'-0"

9'-0"

9'-0"

9'-0"

9'-0"

9'-0"

9'-0"

9'-0"

9'-0"

9'-0"

9'-0"

9'-0"

9'-0"

9'-0"

9'-0"

9'-0"

9'-0"

9'-0"

9'-0"

9'-0"

9'-0"

9'-0"

9'-0"

9'-0"

9'-0"

9'-0"

9'-0"

9'-0"

9'-0"

9'-0"

9'-0"

9'-0"

9'-0"

9'-0"

9'-0"

9'-0"

9'-0"

9'-0"

9'-0"

9'-0"

9'-0"

9'-0"

9'-0"

9'-0"

9'-0"

9'-0"

9'-0"

9'-0"

9'-0"

9'-0"

9'-0"

9'-0"

9'-0"

9'-0"

9'-0"

9'-0"

9'-0"

9'-0"

9'-0"

9'-0"

9'-0"

9'-0"

9'-0"

9'-0"

9'-0"

9'-0"

9'-0"

9'-0"

9'-0"

9'-0"

9'-0"

9'-0"

9'-0"

9'-0"

9'-0"

9'-0"

9'-0"

9'-0"

9'-0"

9'-0"

9'-0"

9'-0"

9'-0"

9'-0"

9'-0"

9'-0"

9'-0"

9'-0"

9'-0"

9'-0"

9'-0"

9'-0"

9'-0"

9'-0"

9'-0"

9'-0"

9'-0"

9'-0"

9'-0"

9'-0"

9'-0"

9'-0"

9'-0"

9'-0"

9'-0"

9'-0"

9'-0"

9'-0"

9'-0"

9'-0"

9'-0"

9'-0"

9'-0"

9'-0"

9'-0"

9'-0"

9'-0"

9'-0"

9'-0"

9'-0"

9'-0"

9'-0"

9'-0"

9'-0"

9'-0"

9'-0"

9'-0"

9'-0"

9'-0"

9'-0"

9'-0"

9'-0"

9'-0"

9'-0"

9'-0"

9'-0"

9'-0"

9'-0"

9'-0"

9'-0"

9'-0"

9'-0"

9'-0"

9'-0"

9'-0"

9'-0"

9'-0"

9'-0"

9'-0"

9'-0"

9'-0"

9'-0"

9'-0"

9'-0"

9'-0"

9'-0"

9'-0"

9'-0"

9'-0"

9'-0"

9'-0"

9'-0"

9'-0"

9'-0"

9'-0"

9'-0"

9'-0"

9'-0"

9'-0"

9'-0"

9'-0"

9'-0"

9'-0"

9'-0"

9'-0"

9'-0"

9'-0"

9'-0"

9'-0"

9'-0"

9'-0"

9'-0"

9'-0"

9'-0"

9'-0"

9'-0"

9'-0"

9'-0"

9'-0"

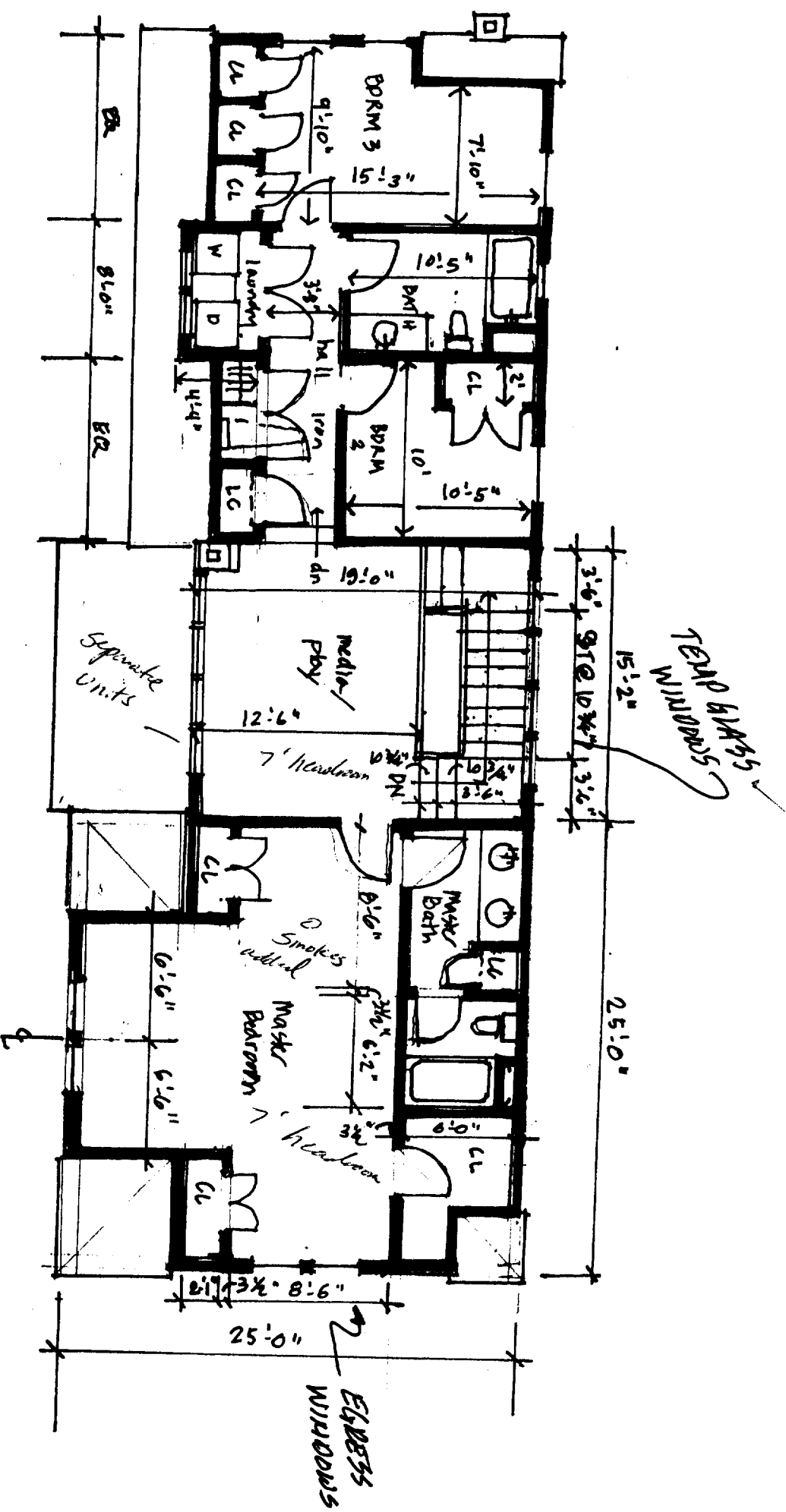
9'-0"

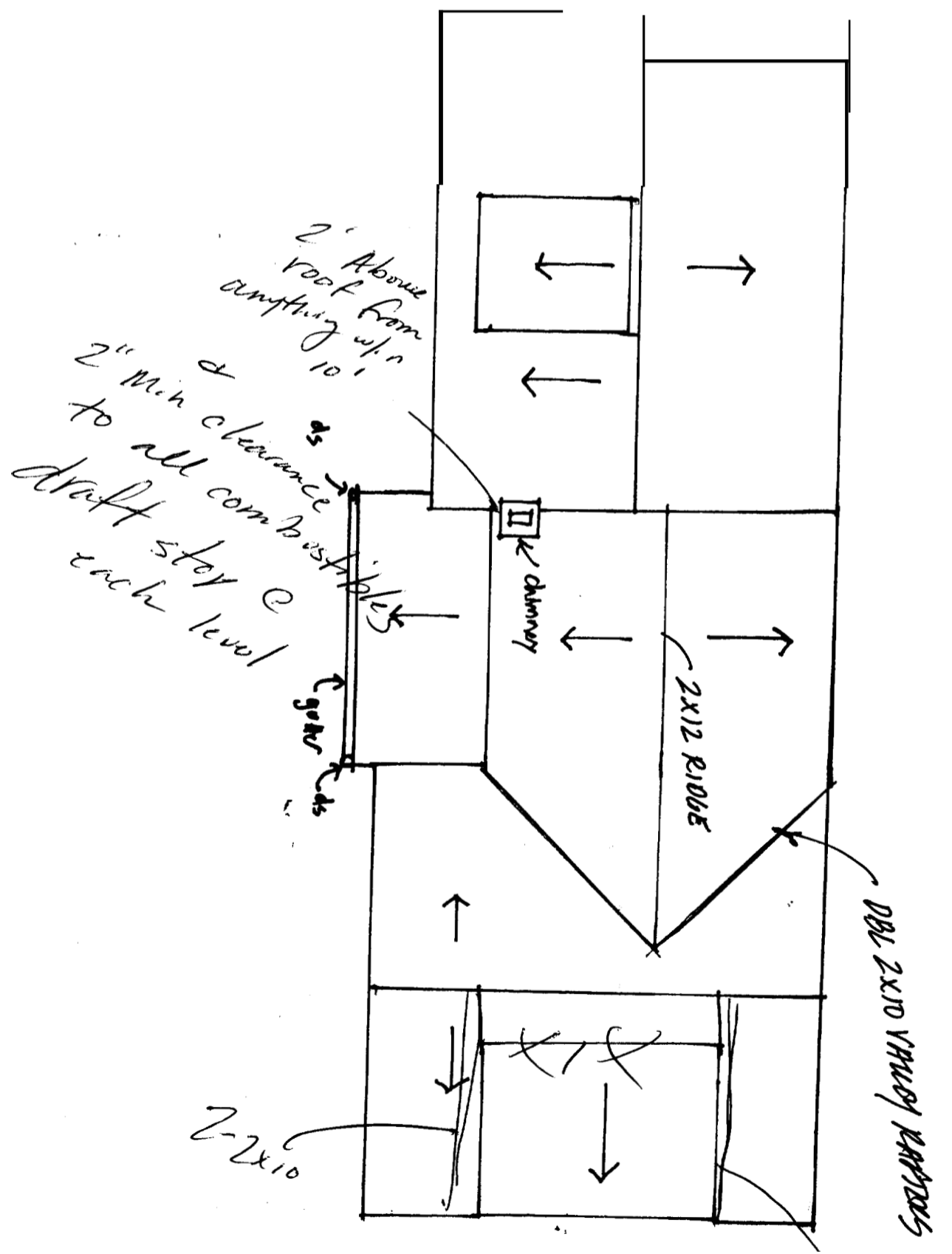
9'-0"

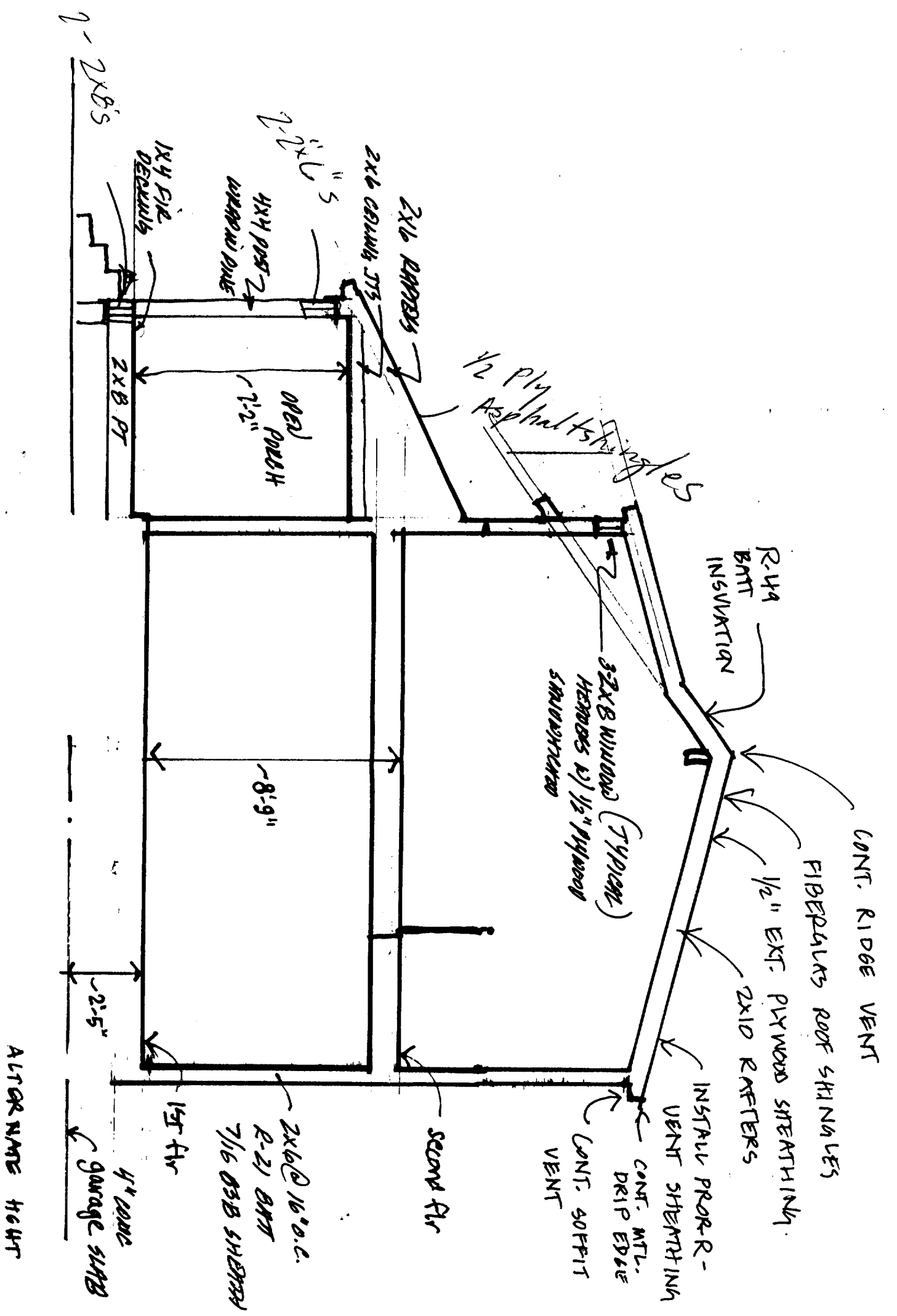
9'-0"

9'-0"

9'-0"







CONT. RIDGE VENT

FIBERGLASS ROOF SHINGLES

1/2" EXT. PLYWOOD SHEATHING

2x10 RAFTERS

INSTALL PROPR. VENT SHEATHING

CONT. MTL. DRIP EDGE

CONT. SOFFIT VENT

2x6 @ 16" O.C.

R-21 BATT

7/16 OSB SHEATH

1st Flr

4" CONC GARAGE SLAB

2'-5"

SECOND FLR

8'-9"

3x2x8 WOOD (TYPICAL) MEMBERS w/ 1/2" PLYWOOD SHEATHING

R-49 BATT INSULATION

1/2" Ply

Asphalt & Shingles

2x6 PARALLEL

2x6 CEILING JOIST

1 1/2" S

4x4 POST

WEAPON DOME

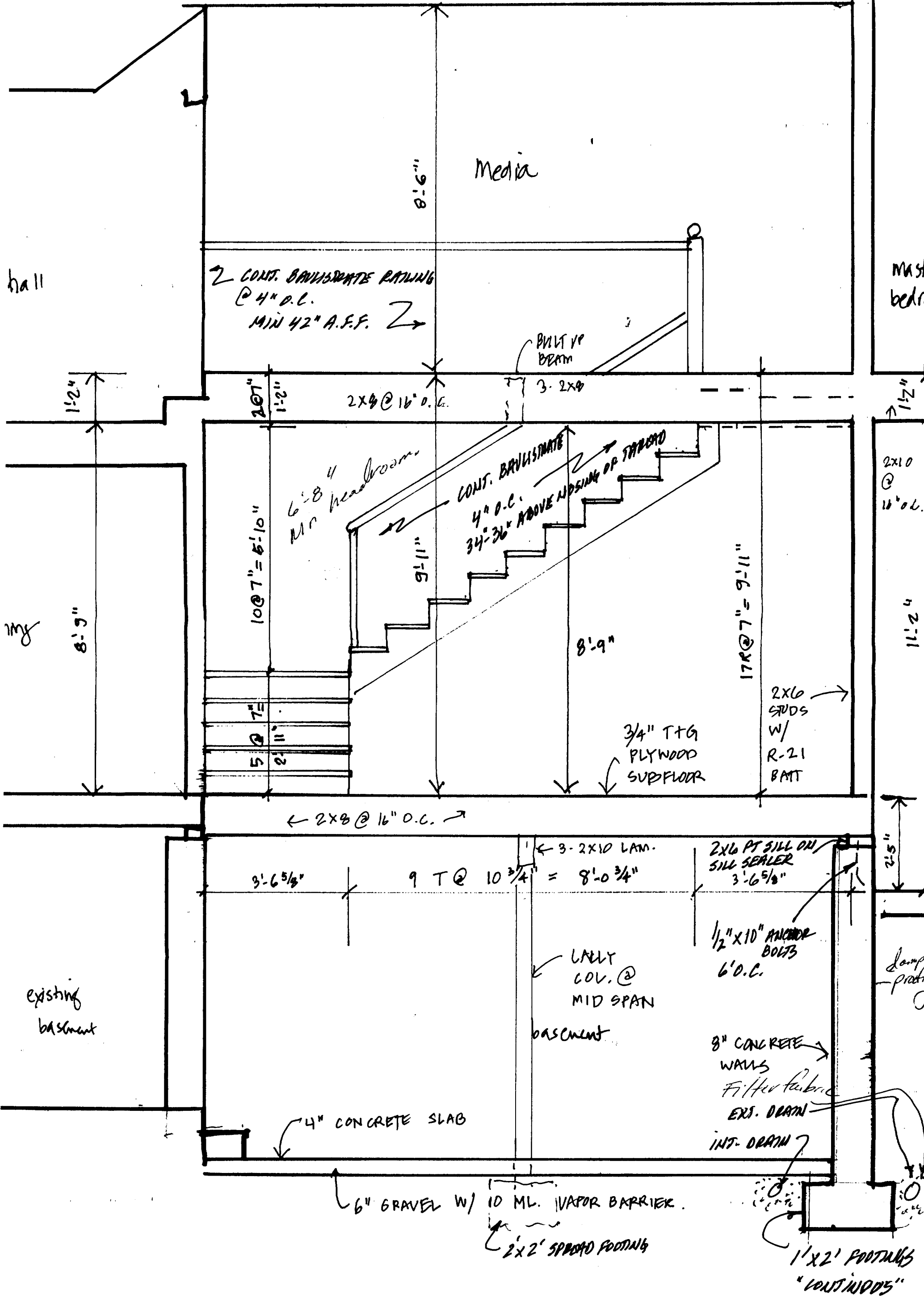
1x4 FUR

2x8 PT

1st Flr DETAILS

1-2x8's

ALTOR NAME HEIGHT



hall

Media

master
bedroom

my

existing
basement

damp-
proofing

2 CONT. GALVANIZED RUNGS
@ 4" O.C.
MIN 42" A.F.F. 2

BUILT UP
BEAM

2x8 @ 16" O.C.

3- 2x8

6'-8" headroom

CONT. GALVANIZED
4" O.C.
34"-36" ABOVE NOSING OF TREAD

10 @ 7" = 5'-10"

9'-11"

8'-9"

17 @ 7" = 9'-11"

2x6
STUDS
W/
R-21
BATT

3/4" T+G
PLYWOOD
SUBFLOOR

← 2x8 @ 16" O.C. →

3'-6 5/8"

9 T @ 10 3/4" = 8'-0 3/4"

← 3- 2x10 LAM.

2x6 PT SILL ON
SILL SEALER
3'-6 5/8"

LATELY
COV. @
MID SPAN

basement

1/2" x 10" ANCHOR
BOLTS
6' O.C.

8" CONCRETE
WALLS

Filter fabric

EXT. DRAIN

INT. DRAIN

4" CONCRETE SLAB

6" GRAVEL W/ 10 ML VAPOR BARRIER

2' x 2' SPREAD FOOTING

1' x 2' FOOTINGS
"CONTINUOUS"

