



Faint, illegible text at the top center of the page.

Faint, illegible text on the right side of the page.

Faint, illegible text on the right side of the page.

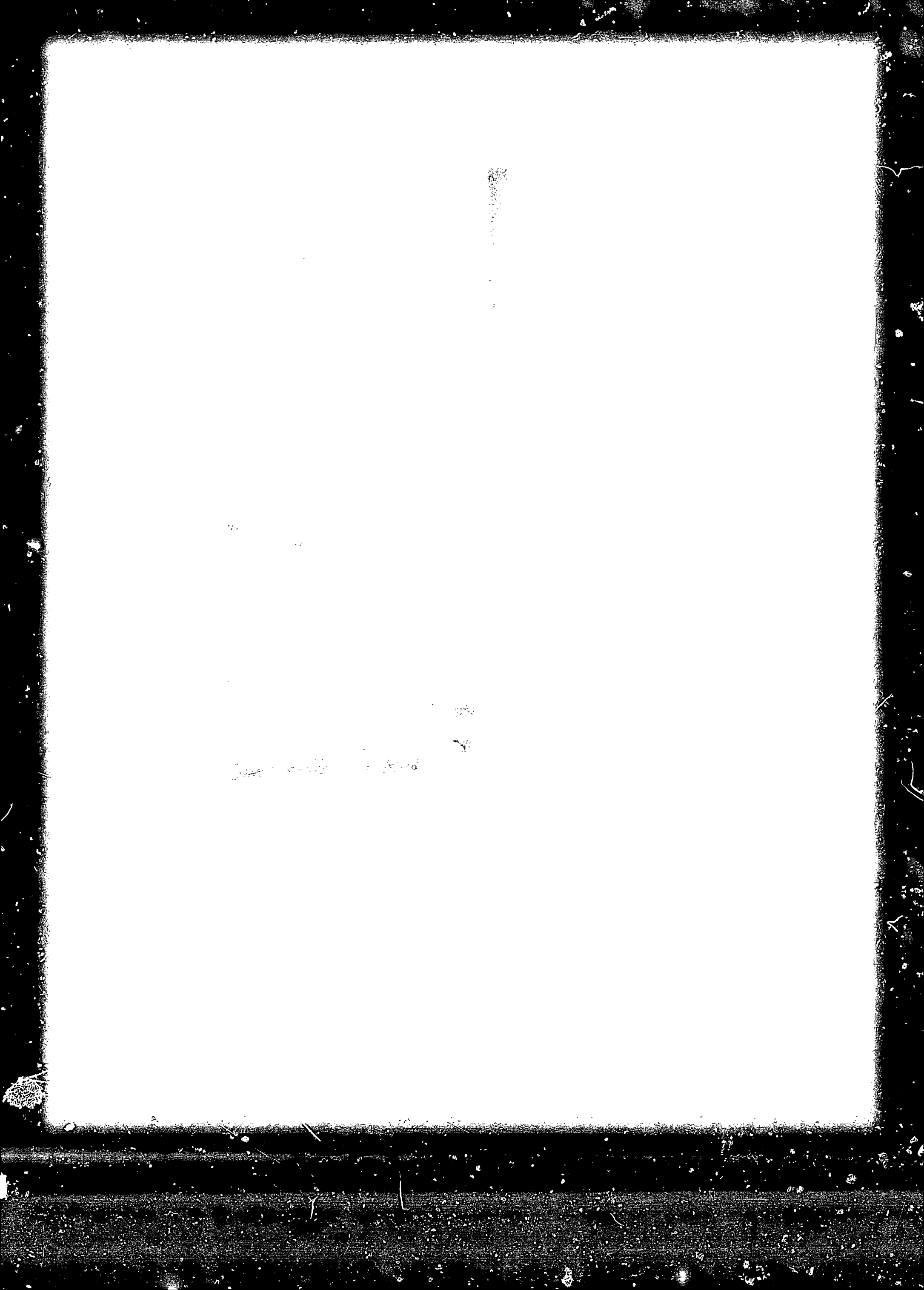
Faint, illegible text in the center of the page.

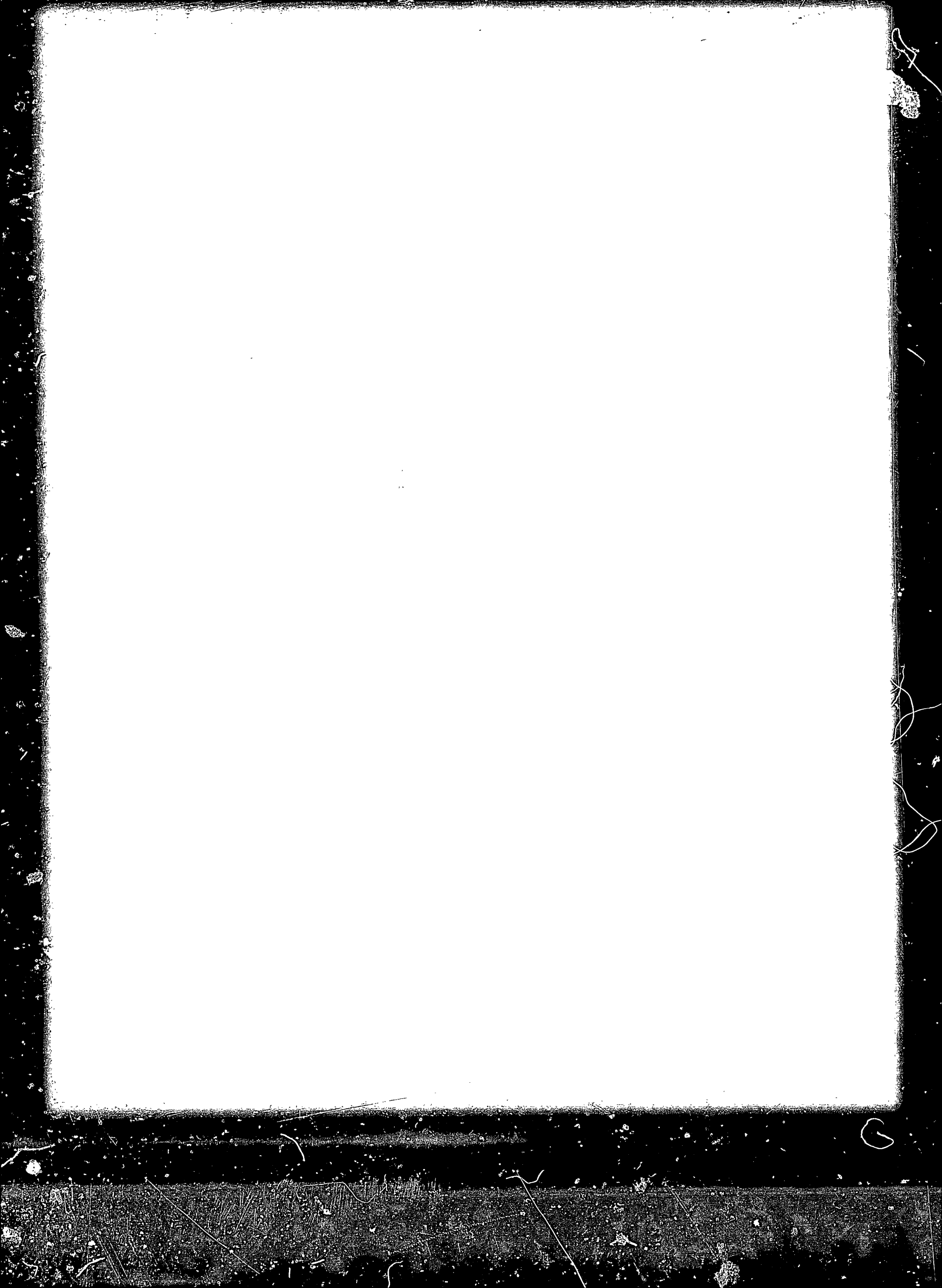
Faint, illegible text in the center of the page.

Faint, illegible text in the center of the page.

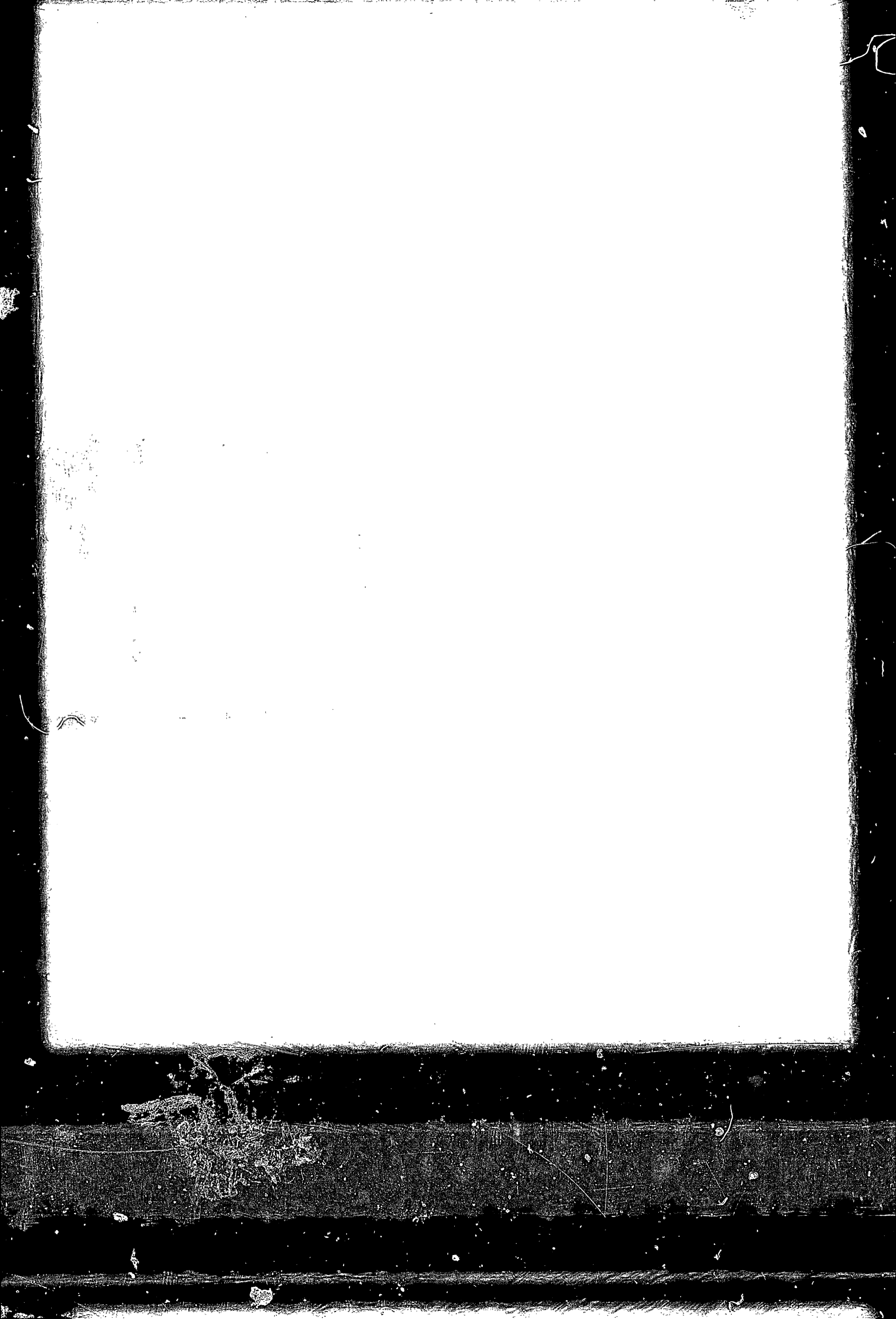
Faint, illegible text in the center of the page.

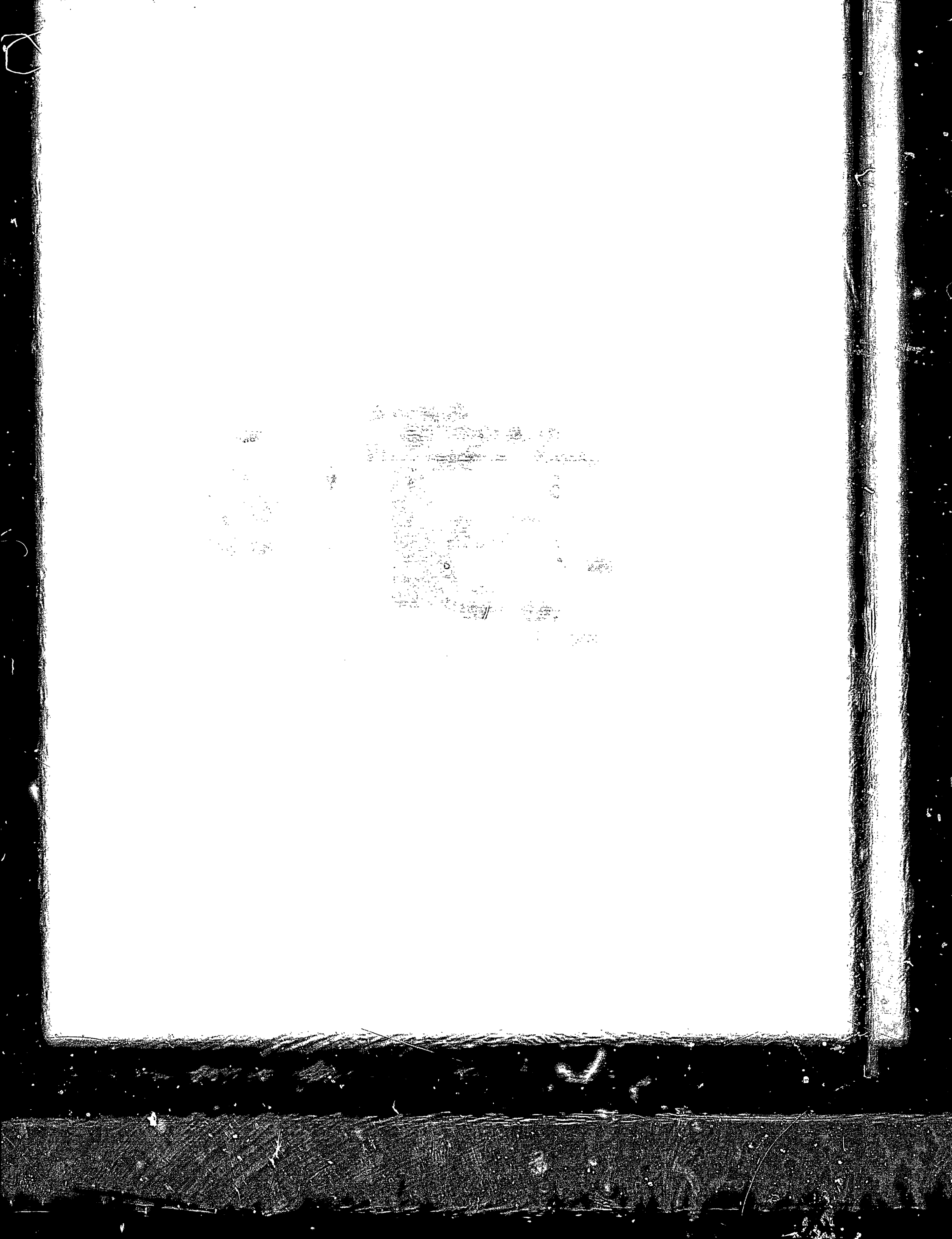
Faint, illegible text on the right side of the page.



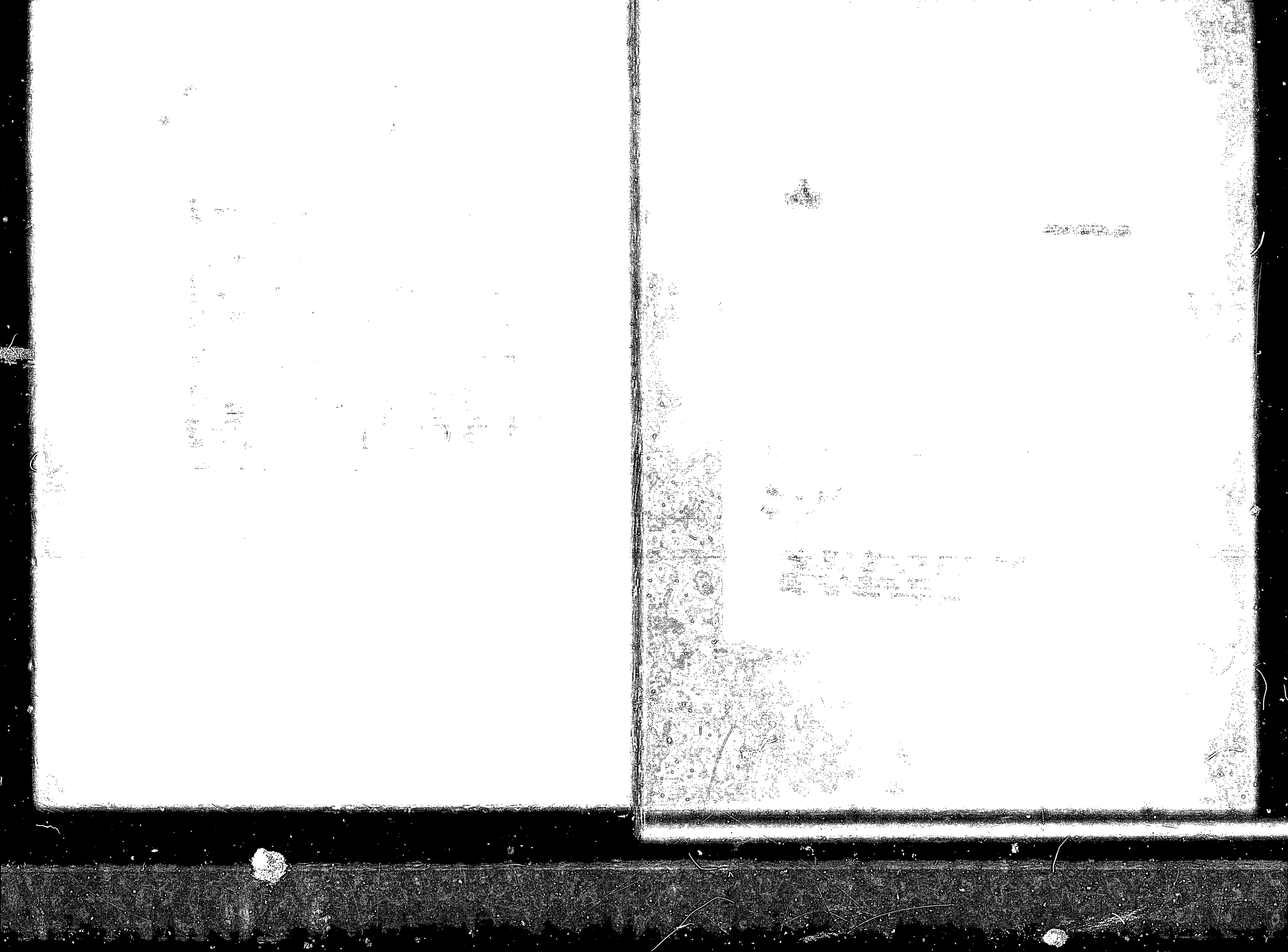


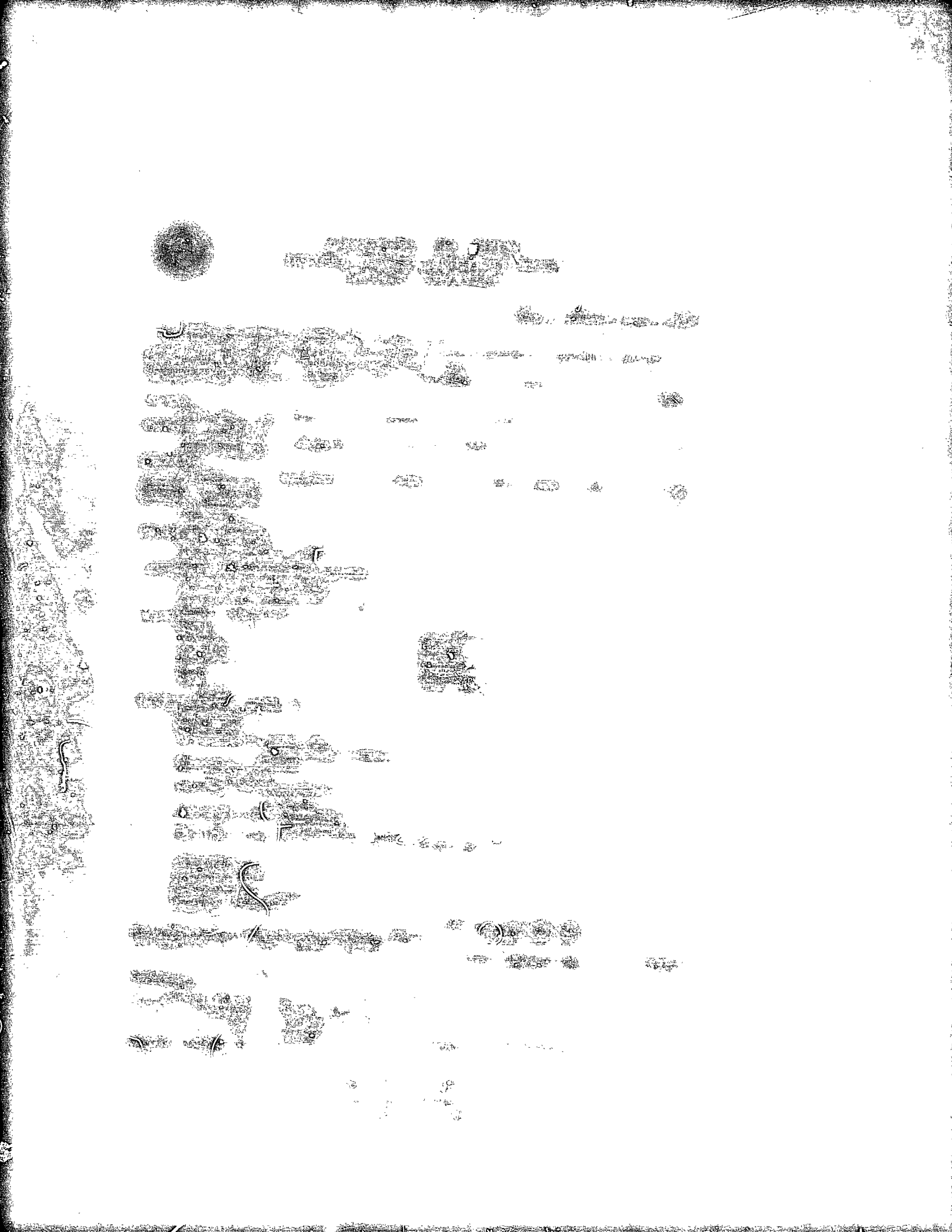
THE UNIVERSITY OF CHICAGO





100





11

12

13

14

15

16

17

18

19

20

21

22

23

24

25

26

27

28

29

30

31

32

33

34

35

36

37

38

39

40

41

42

43

44

45

46

47

48

49

50

51

52

53

54

55

56

57

58

59

60

61

62

63

64

65

66

67

68

69

70

71

72

73

74

75

76

77

78

79

80

81

82

83

84

85

86

87

88

89

90

91

92

93

94

95

96

97

98

99

100

101

102

103

104

105

106

107

108

109

110

111

112

113

114

115

116

117

118

119

120

121

122

123

124

125

126

127

128

129

130

131

132

133

134

135

136

137

138

139

140

141

142

143

144

145

146

147

148

149

150

151

152

153

154

155

156

157

158

159

160

161

162

163

164

165

166

167

168

169

170

171

172

173

174

175

176

177

178

179

180

181

182

183

184

185

186

187

188

189

190

191

192

193

194

195

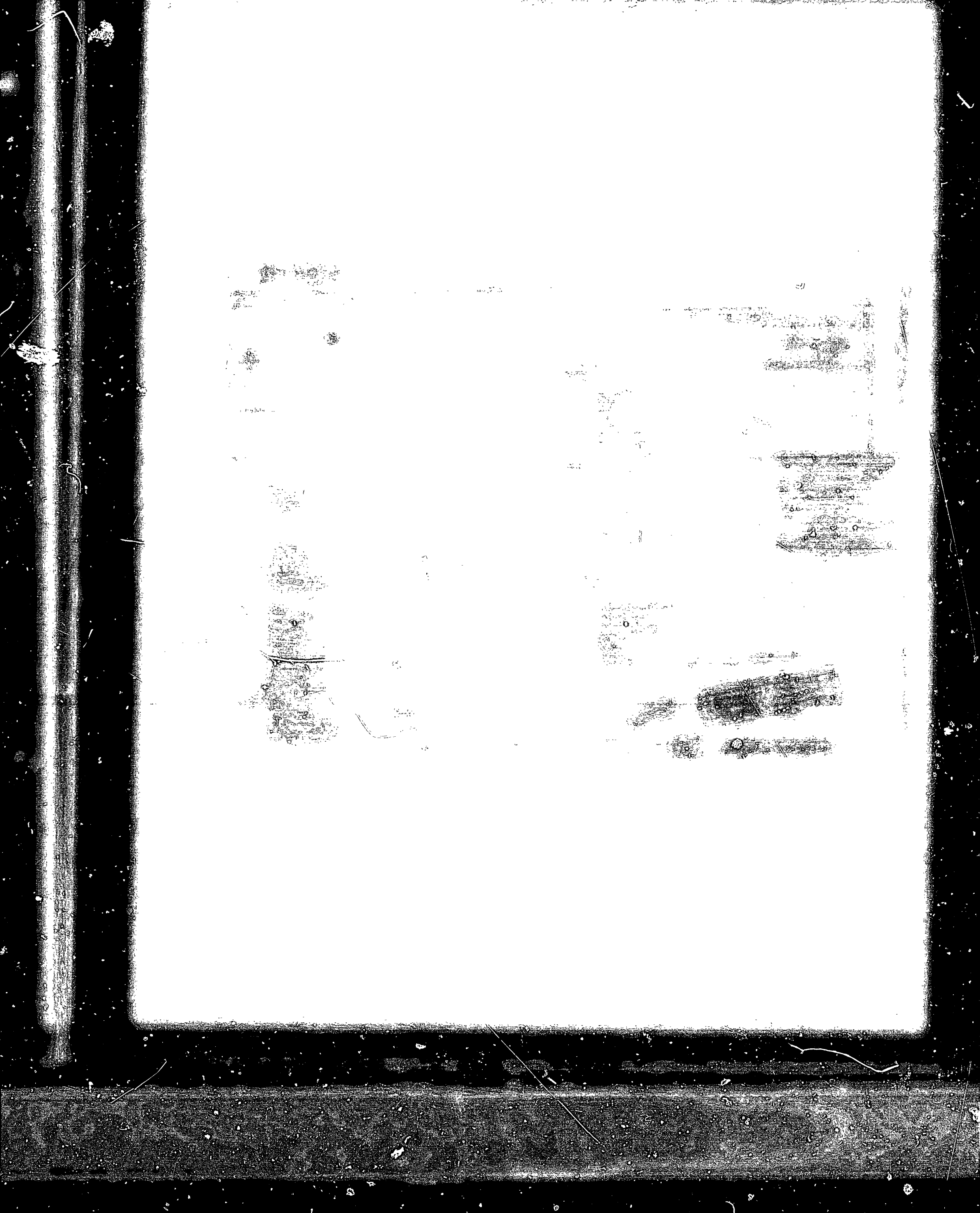
196

197

198

199

200

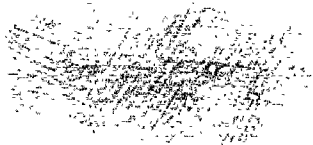


1917



1917

1917



1917

12
The first part of the book is devoted to a description of the various forms of life which are found in the sea. It begins with the simplest forms, such as the amoeba and the paramecium, and goes on to describe the more complex forms, such as the jellyfish and the cuttlefish. The author describes the habits and life histories of these animals, and also discusses the ways in which they are adapted to their environment.

The second part of the book is devoted to a description of the various forms of life which are found on land. It begins with the simplest forms, such as the amoeba and the paramecium, and goes on to describe the more complex forms, such as the jellyfish and the cuttlefish.

The third part of the book is devoted to a description of the various forms of life which are found in the air. It begins with the simplest forms, such as the amoeba and the paramecium, and goes on to describe the more complex forms, such as the jellyfish and the cuttlefish.

The fourth part of the book is devoted to a description of the various forms of life which are found in the soil. It begins with the simplest forms, such as the amoeba and the paramecium, and goes on to describe the more complex forms, such as the jellyfish and the cuttlefish.

The fifth part of the book is devoted to a description of the various forms of life which are found in the water. It begins with the simplest forms, such as the amoeba and the paramecium, and goes on to describe the more complex forms, such as the jellyfish and the cuttlefish.

The sixth part of the book is devoted to a description of the various forms of life which are found in the air. It begins with the simplest forms, such as the amoeba and the paramecium, and goes on to describe the more complex forms, such as the jellyfish and the cuttlefish.

[Heavily degraded and illegible text block]

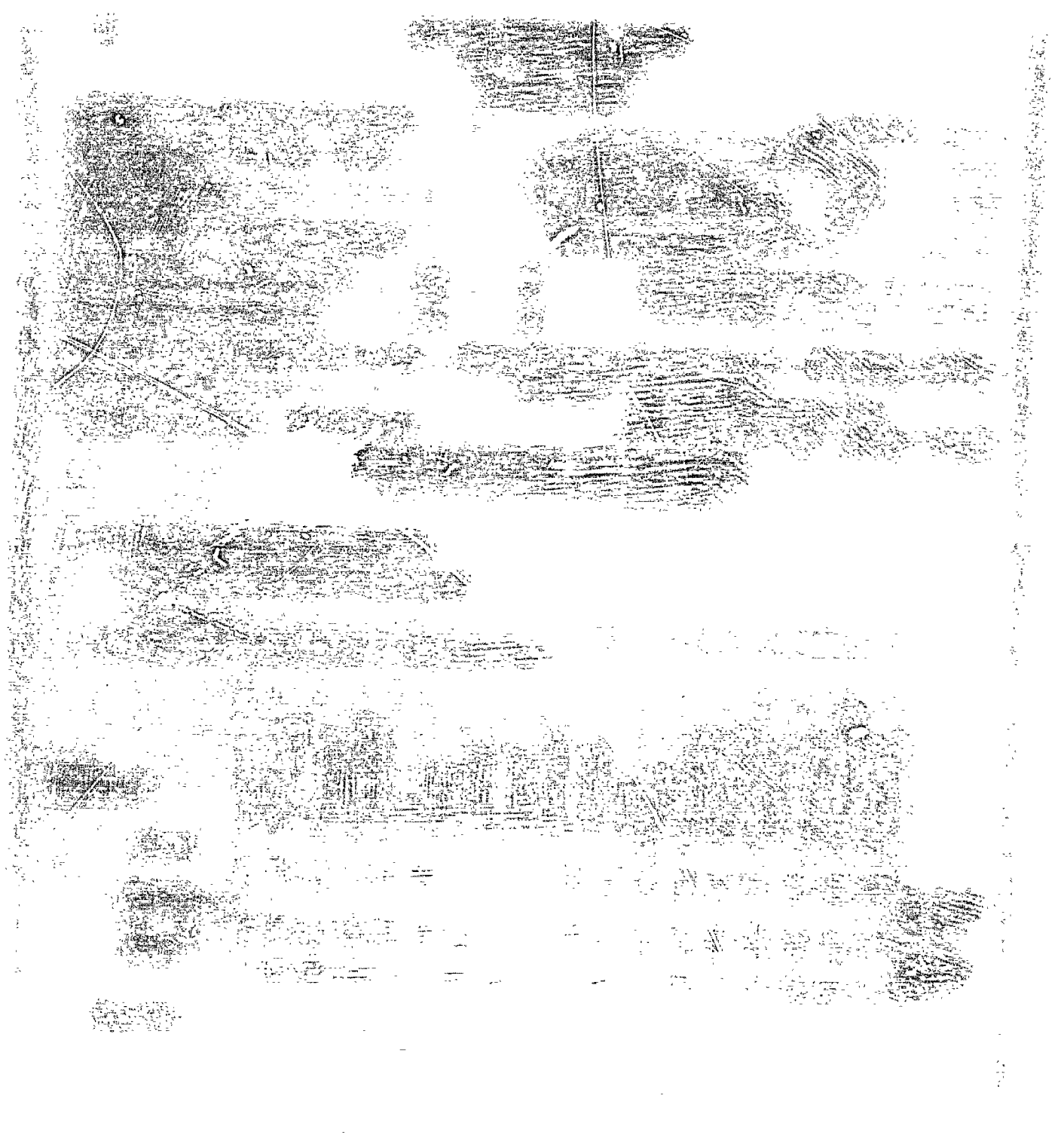
[Heavily degraded and illegible text block]

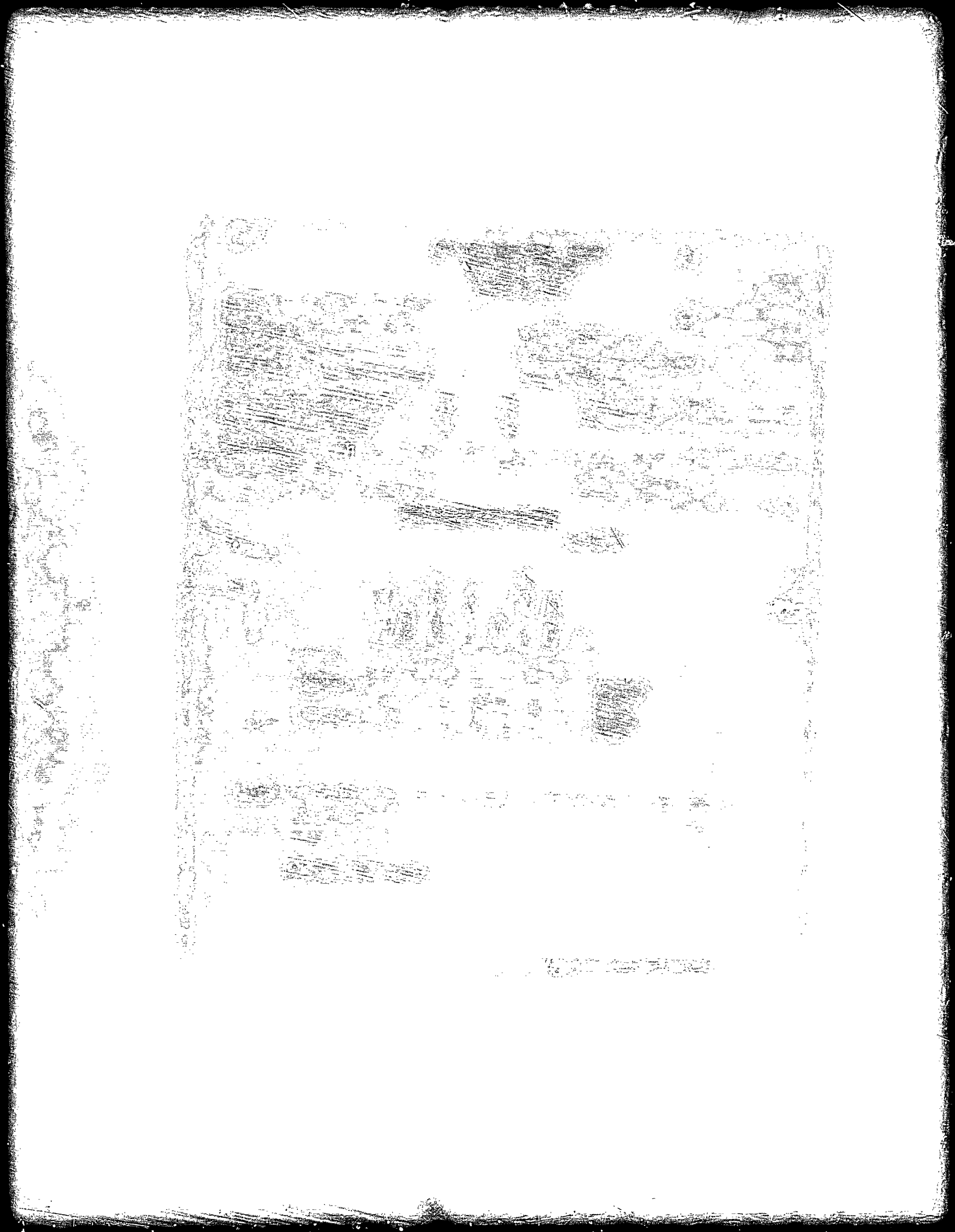
[Heavily degraded and illegible text block]

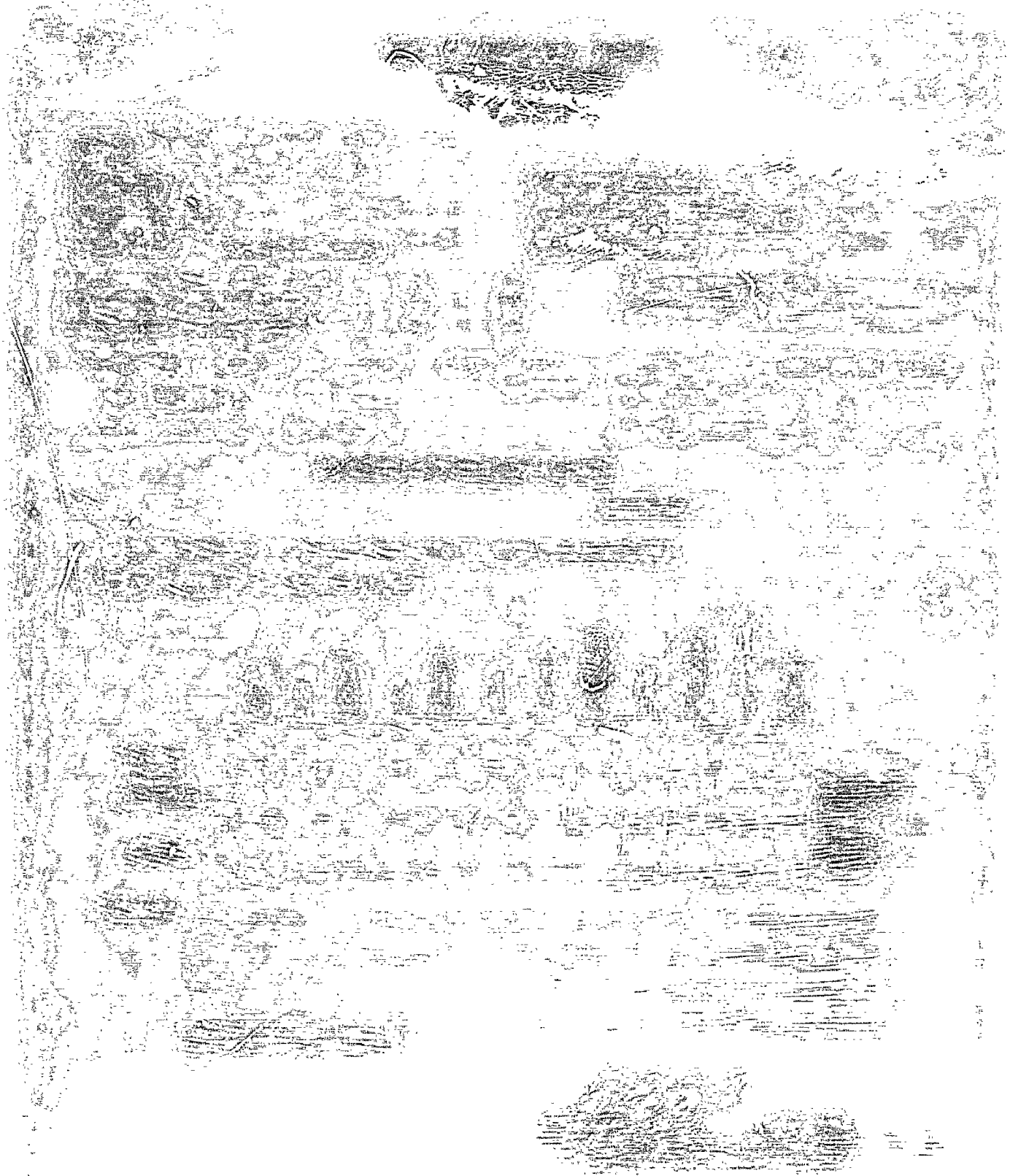
[Heavily degraded and illegible text block]

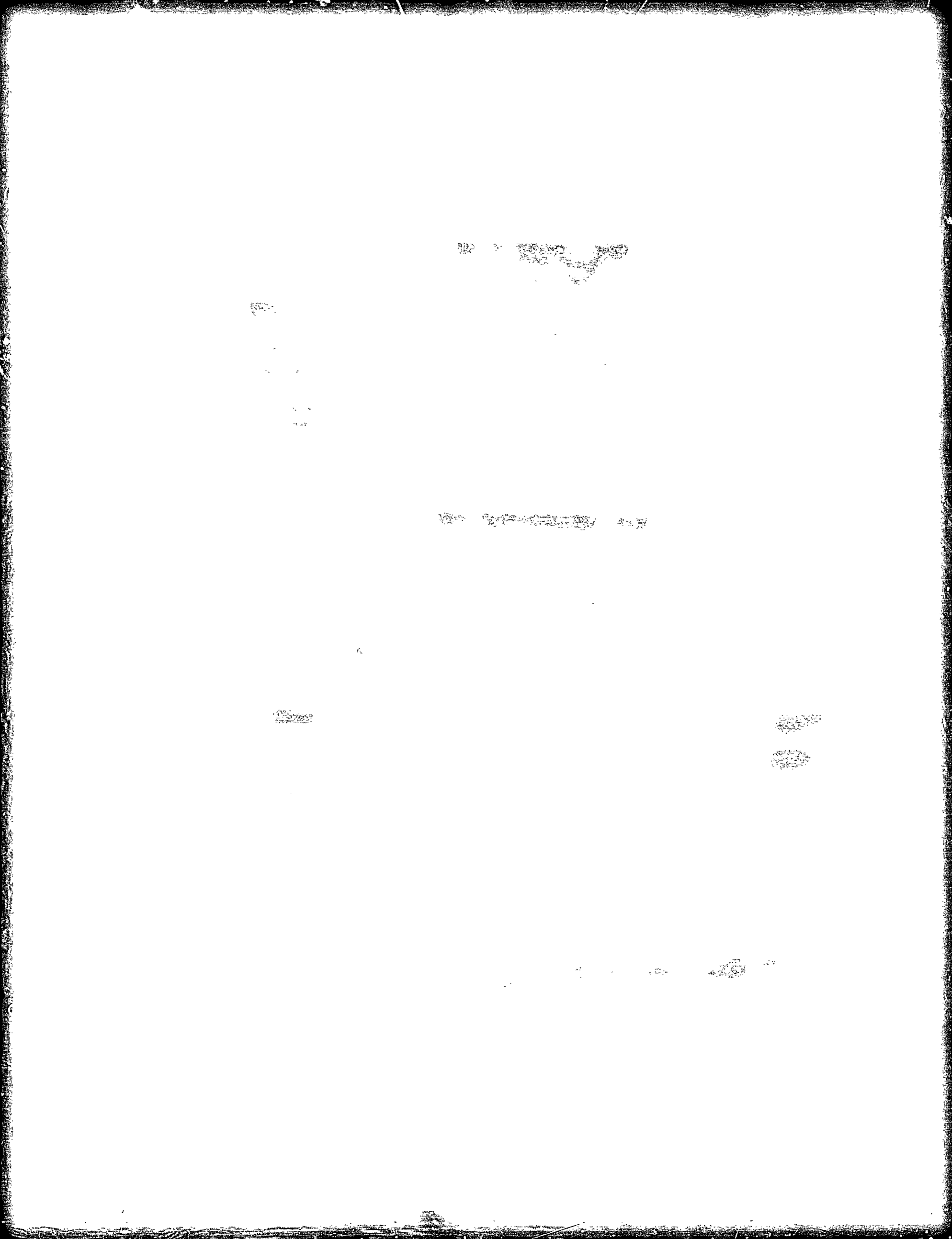
[Heavily degraded and illegible text block]

[Heavily degraded and illegible text block]









[Illegible text]

[Illegible text]

[Illegible text]

[Illegible text]

[Illegible text]

[Illegible text]

[Illegible text]

[Illegible text]

[Illegible text]

[Illegible text]

[Illegible text]

[Illegible text]

[Illegible text]

1914

1915

1916

1917

1918

1919

1920

1921

1922

1923

1924

1925

1926

1927

1928

1929

1930

1931

1932

1933

1934

1935

1936

1937

1938

1939

1940

1941

1942

1943

1944

1945

1946

1947

1948

1949

1950

1951

1952

1953

1954

1955

1956

1957

1958

1959

1960

1961

1962

1963

1964

1965

1966

1967

1968

1969

1970

1971

1972

1973

1974

1975

1976

1977

1978

1979

1980

1981

1982

1983

1984

1985

1986

1987

1988

1989

1990

1991

1992

1993

1994

1995

1996

1997

1998

1999

2000

2001

2002

2003

2004

2005

2006

2007

2008

2009

2010

2011

2012

2013

2014

2015

2016

2017

2018

2019

2020

2021

2022

2023

2024

2025

