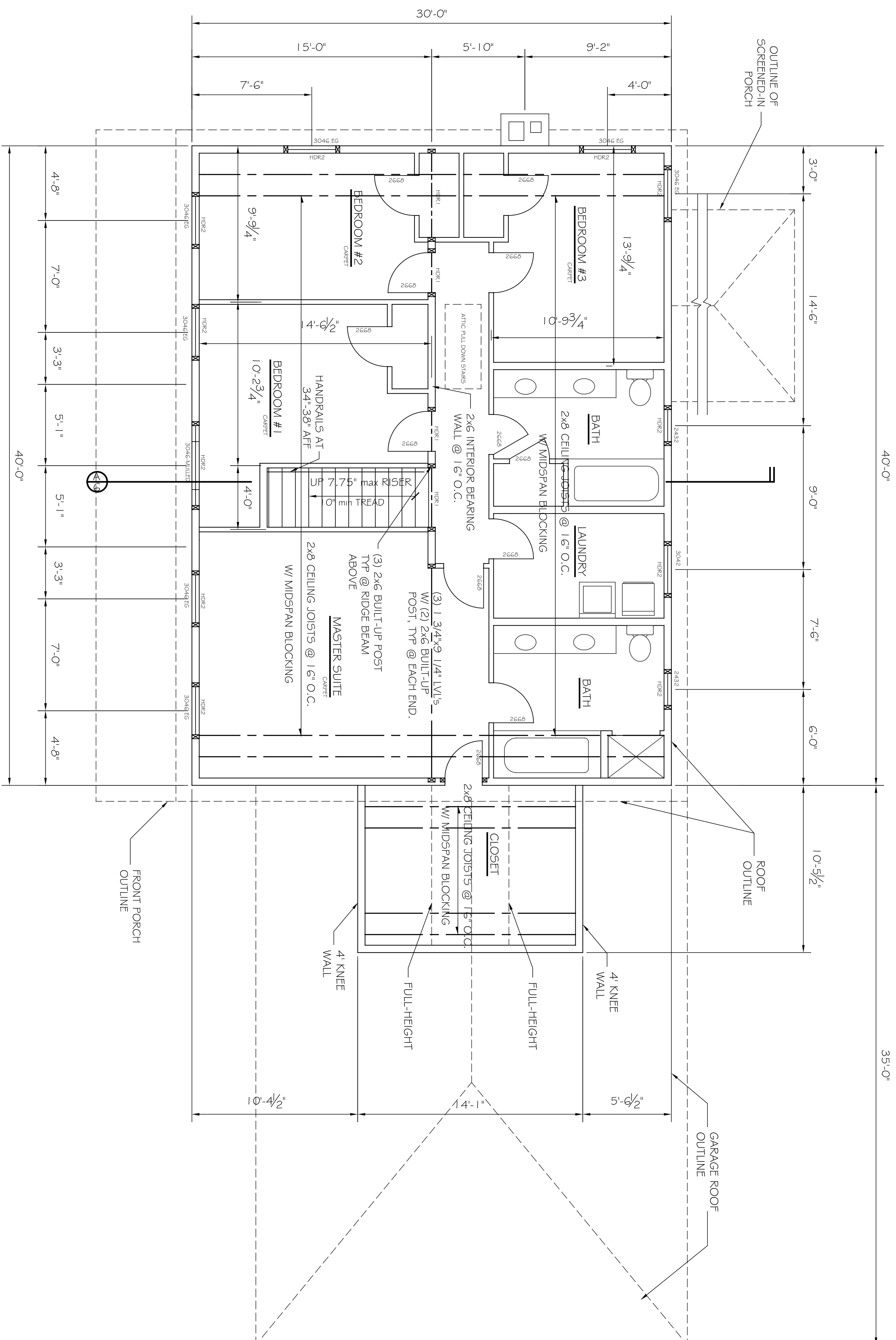


THIS P. E. REVIEW COVERS STRUCTURAL FRAMING MEMBERS' SIZES FOR NEW OR MODIFIED STRUCTURE ONLY. DESIGN AND DETAIL FRAMING CONNECTIONS, COMPONENTS AND CLADDING, FINISHES, FLOOR PLAN LAYOUT, AND LIFE SAFETY CODE REQUIREMENTS HAVE NOT BEEN REVIEWED AND ARE BEYOND THE PURVIEW OF THIS P. E. SEAL.

**NOTES:**

1. ALL PS1's ARE 2.0 E. PARALLAM UNLESS OTHERWISE NOTED.
2. ALL LVLS ARE 1.9E MICROLAM LVLS UNLESS OTHERWISE NOTED.
3. ALL SPECIFIED HEADER POSTS ARE "JACK STUDS" & SHOULD EXTEND TO THE UNDERSIDE OF HEADER. CONTRACTOR SHOULD PROVIDE (1) 2x KING STUD. QUANTITY OF 2x BUILT-UP POSTS ARE NUMBER READ @ EACH END OF HEADER UNLESS OTHERWISE NOTED.
4. PROVIDE & INSTALL ALL SIMPSON STRONG TIE CONNECTORS AS RECOMMENDED BY MANUFACTURER.
5. ALL NEW STRUCTURAL POSTS SHALL CONTINUE DOWN TO NEXT FLOOR LEVEL.
6. GENERAL CONTRACTOR TO COMPLY WITH BOCA 1999 TABLE 2305.2 FASTENING SCHEDULE.
7. G.C. VERIFY EGRESS WINDOW CLEARANCES WITH WINDOW MANUFACTURE DIMENSIONS. CRITERIA FOR FREE AREA @ OPEN SASH (57" SE CLEAR AREA WITH 20" MIN WIDTH AND 24" MIN HEIGHT). EGRESS WINDOWS DESIGNATED ON PLANS BY (WINDOW SIZE) EG.



**SECOND FLOOR PLAN**  
SCALE: 1/4" = 1'

HEADER DESIGNATION	HEADER CONSTRUCTION	JACK STUD CONSTRUCTION
HDR1	(3) 2x8's w/ (2) 1/2" PLYWOOD LAMS	(2) 2x6 BUILT-UP
HDR2	(3) 2x10's w/ (2) 1/2" PLYWOOD LAMS	(2) 2x6 BUILT-UP

REVISIONS		
No.	DESCRIPTION	DATE
1	REVISED PER CITY OF PORTLAND REVIEW	9/10/03

PROJECT: **VOLGER RESIDENCE**  
PORTLAND, MAINE

SHEET TITLE:  
**SECOND FLOOR PLAN**

THE DESIGN RESPONSIBILITY OF ASSOCIATED DESIGN PARTNERS, INC. OR ANY OTHER MEMBER OF THIS FIRM IS LIMITED TO THE DESIGN WORK SHOWN ON THIS DOCUMENT UNLESS OTHERWISE SPECIFIED IN WRITING. CONSULTING IS PROHIBITED.

**ASSOCIATED DESIGN PARTNERS INC.**

80 Leighton Road  
Falmouth, Maine 04105

Office: (207) 878-1751  
Fax: (207) 878-1788  
E-Mail: adp@maine.ric.com

DATE: 9/15/03  
SCALE: 1/4" = 1'  
DESIGN BY: JAT  
DRAWN BY: MCK  
FILE NO. 03017A.DWG  
PROJECT NUMBER: 03017

SHEET: **A4** OF **7**