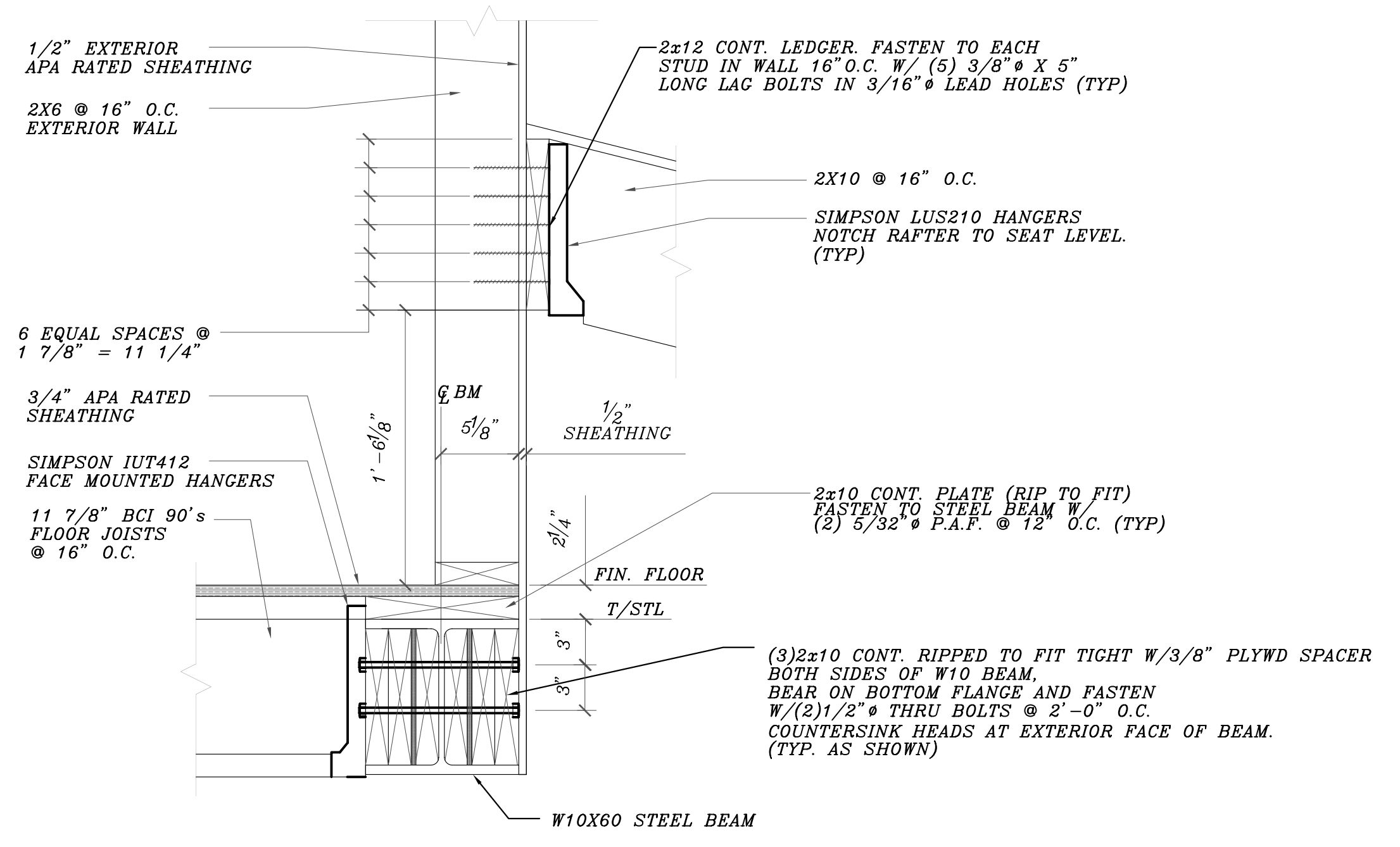
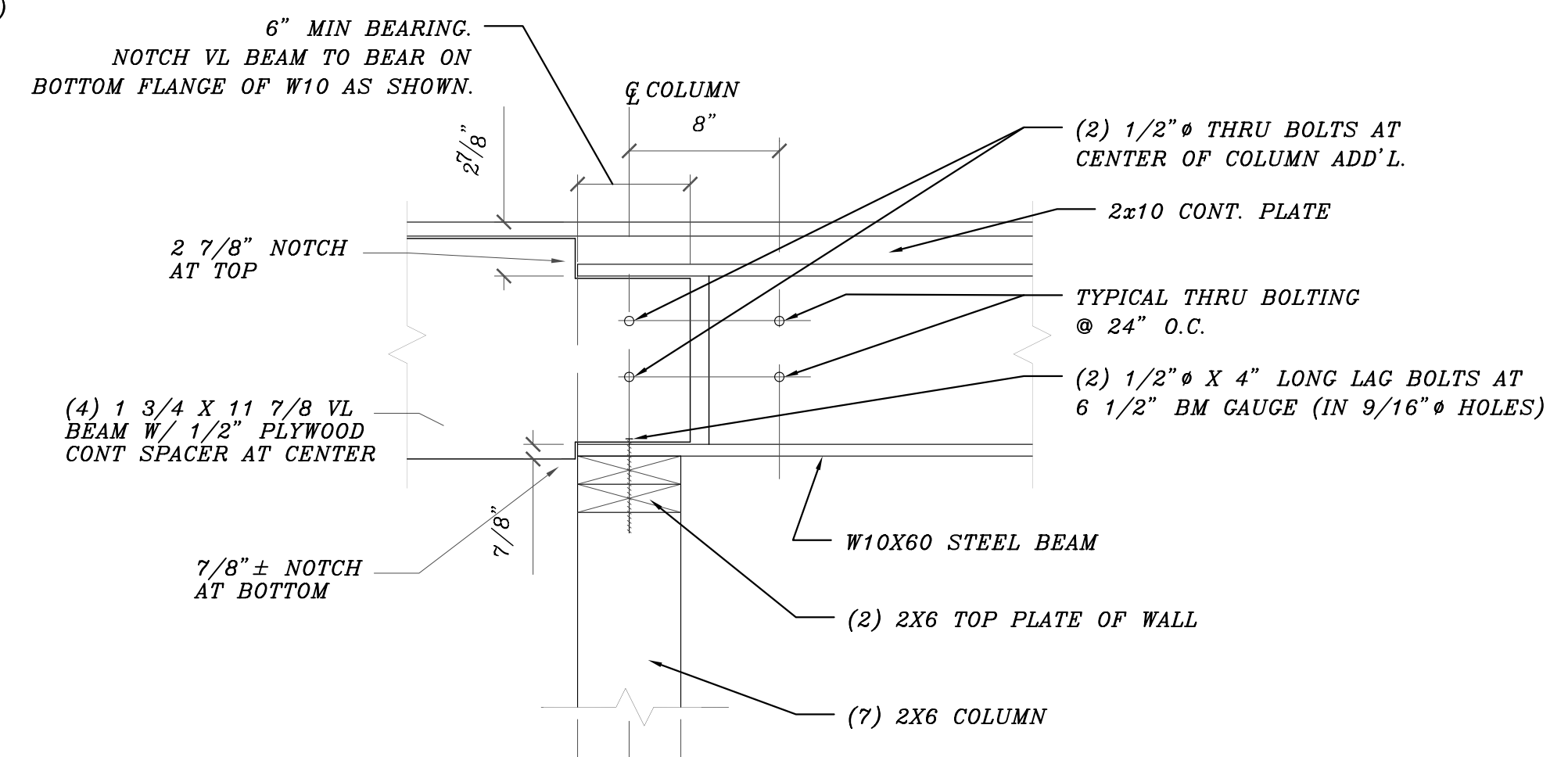


SECOND FLOOR FRAMING PLAN  
1/4" = 1'-0"

- NOTES:
- FLOOR JOISTS SHALL BE 11 7/8" BCI 90s @ 16" O.C. (TYP. U.O.N.)
  - JOIST HANGERS SHALL BE SIMPSON IUT412 (TYP. U.O.N.)
  - HANGERS FOR 1 3/4" x 11 7/8" VL SHALL BE SIMPSON H111 (TYP. U.O.N.)
  - HANGERS FOR 3 1/2" x 11 7/8" VL SHALL BE SIMPSON HU412 (TYP. U.O.N.)
  - HANGERS FOR 5 1/4" x 11 7/8" VL SHALL BE SIMPSON HUS 5.50/10 (TYP. U.O.N.)
  - SEE GENERAL NOTES ON DWG. S1.
  - ALL HEADERS SHALL HAVE 2x6 JACK STUDS PLUS 2x6 KING STUD AT BOTH ENDS (TYP. U.O.N.)
  - "VL" INDICATES: VERSALAM LVL BEAM MANUFACTURED BY BOISE CASCADE CORP. OR APPROVED EQUAL.



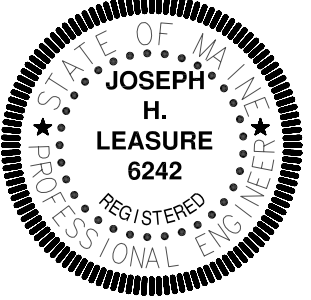
SECTION 1  
1 1/2" = 1'-0"



SECTION 2  
1 1/2" = 1'-0"

NOTE:  
BLOCK BEAM SOLID IN WALL (TYP.)

L & L STRUCTURAL ENGINEERING SERVICES, INC.  
SIX Q STREET  
SOUTH PORTLAND, MAINE 04106  
PHONE: (207) 767-4830  
FAX: (207) 799-5432



rev.	date	description

designed by: JHL  
drawn by: LEM  
checked by: JHL  
scale: AS NOTED  
date: MAY 5, 2006  
plot date: MAY 5, 2006  
project #:

DIXON RESIDENCE  
121 HOPE AVENUE  
PRESUMPSHOT RIVER PLACE  
PORTLAND, MAINE  
SECOND FLOOR FRAMING PLAN

S4