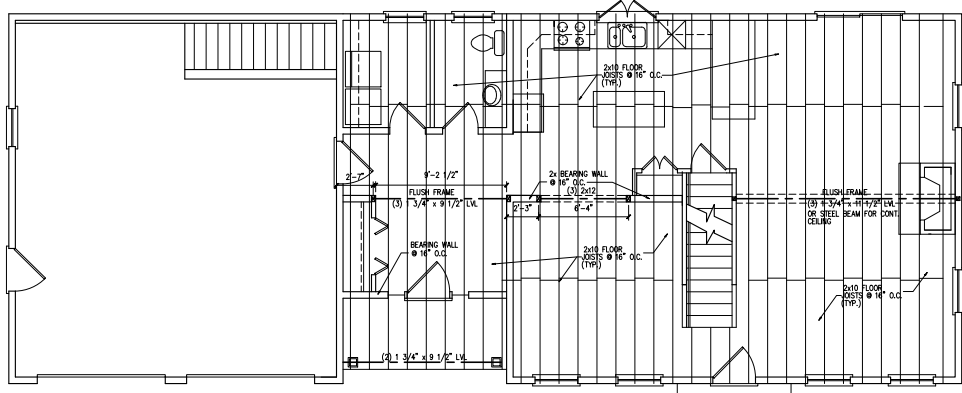
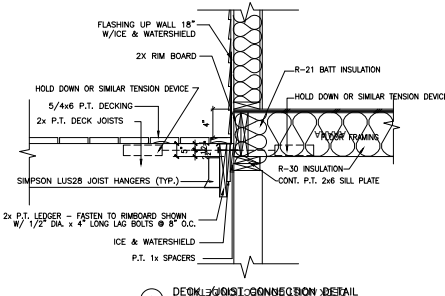


**GENERAL NOTES:**

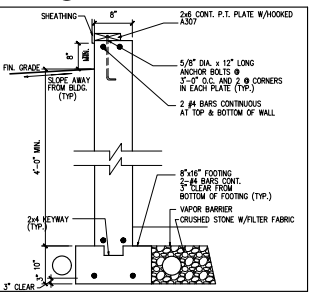
- All work shall be in accordance with IRC 2009, IBC 2009, NFPA-70 National Electric Code, and applicable local codes. Make sure building code requirements are met for all materials and components used in construction and their proper installation and use.
- All applicable codes, standards, regulations, and requirements shall be followed. This includes, but is not limited to, the International Building Code, International Residential Code, International Mechanical Code, International Fire Code, and applicable local codes.
- All materials and components shall be of the highest quality and shall be installed in accordance with the manufacturer's instructions.
- In the event of a conflict between the requirements of the various codes and regulations, the most restrictive shall govern. This includes the addition of necessary structural, mechanical, electrical, and plumbing details to meet the requirements of the applicable codes and regulations.
- Structural/MECHANICAL: Details are to be designed and constructed by a Professional Engineer/Plumber. Structural/MECHANICAL details shall be in accordance with applicable codes and regulations.
- MECHANICAL/ELECTRICAL: Details are to be designed and constructed by a Professional Engineer/Plumber. MECHANICAL/ELECTRICAL details shall be in accordance with applicable codes and regulations.
- Building shall have approved smoke detectors in accordance with NFPA-101 Life Safety Code and local authority having jurisdiction. Smoke detectors shall include alarm that is audible in the sleeping rooms of each unit or approved by authorities having jurisdiction.
- Portable fire extinguishers shall be provided in all hazardous areas in accordance with NFPA-101. Local authority having jurisdiction needs to provide specific requirements.
- Balconies must maintain a 42" guardrail height and shall be kept free and clear of ice and snow at all times to ensure the second means of egress.
- HVAC installation to be in accordance with ASHRAE, NFPA-90A, OR NFPA-90B and all federal, local and State codes. Ventilation or heat equipment shall be in accordance with NFPA-91, NFPA-211, NFPA-31, NFPA-54 and NFPA-70 as applicable.
- HVAC & Electrical design to be design build by contractor.
- Building layout to be sited by others on the building lot.
- Stamped plans are for the use of Lot 23 Basket Lane Portland, Maine and may only be used once in this location.
- Establishing the location of the building, on the site is the responsibility of the contractor and not indicated as part of this drawing set.



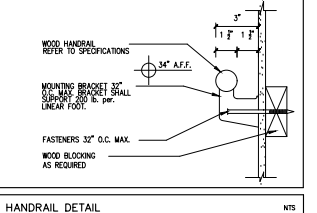
SECOND FLOOR FRAMING PLAN  
SCALE: 1/4" = 1'-0"



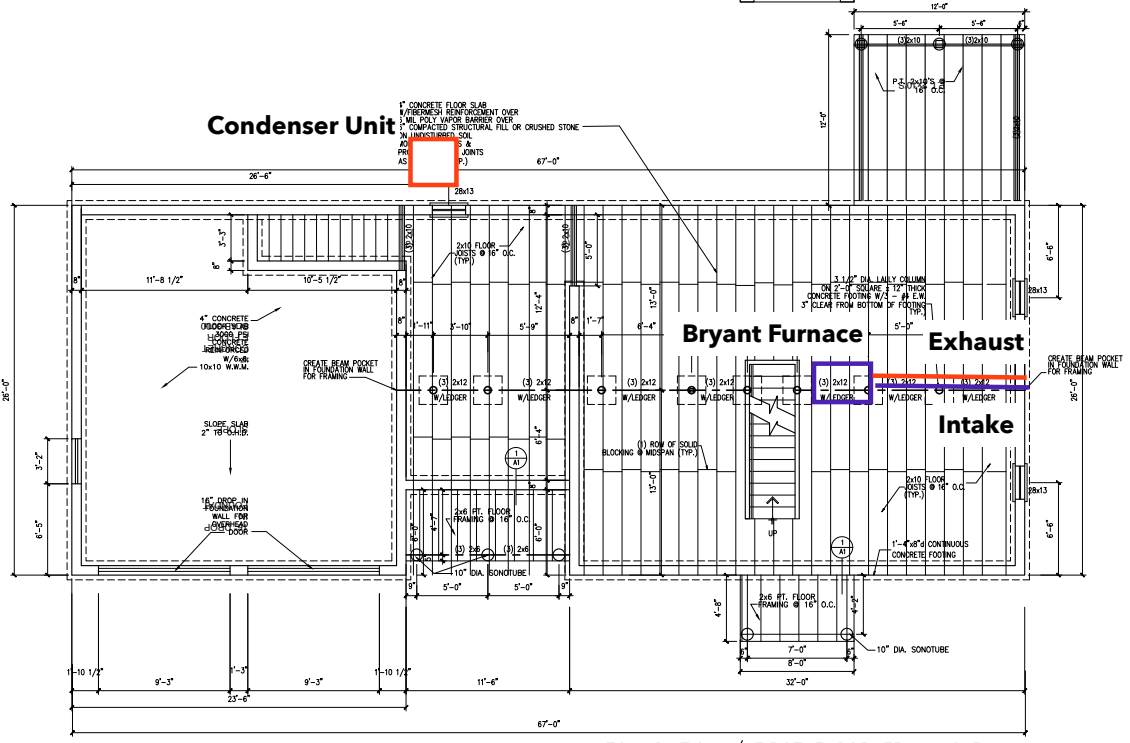
1 DECK JOIST CONNECTION DETAIL  
SCALE: 1" = 1'-0"



2 TYPICAL FOUNDATION WALL  
SCALE: 1" = 1'-0"



HANDRAIL DETAIL  
N75



FOUNDATION / FIRST FLOOR FRAMING PLAN  
SCALE: 1/4" = 1'-0"



PAPE RESIDENCE  
LOT-23  
BASKET LANE  
PORTLAND, MAINE

FOUNDATIONS PLAN  
FRAMING PLAN  
NO DESS/DETAILS

DATE  
07/08/16

A1