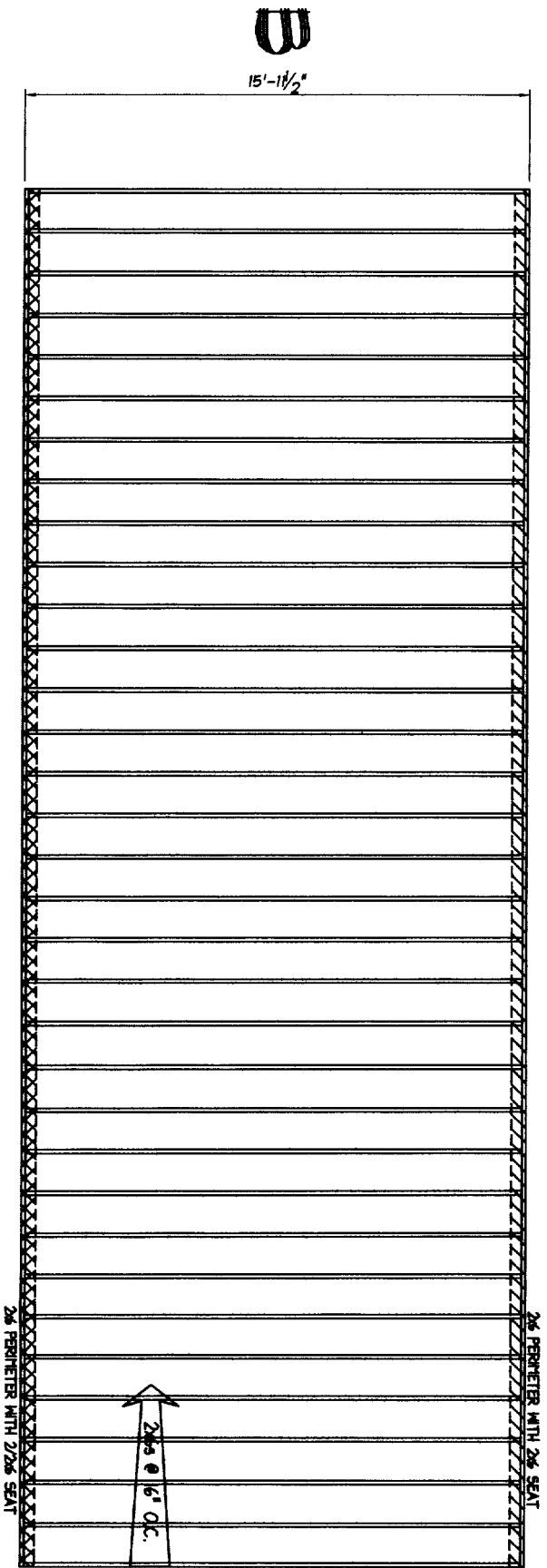
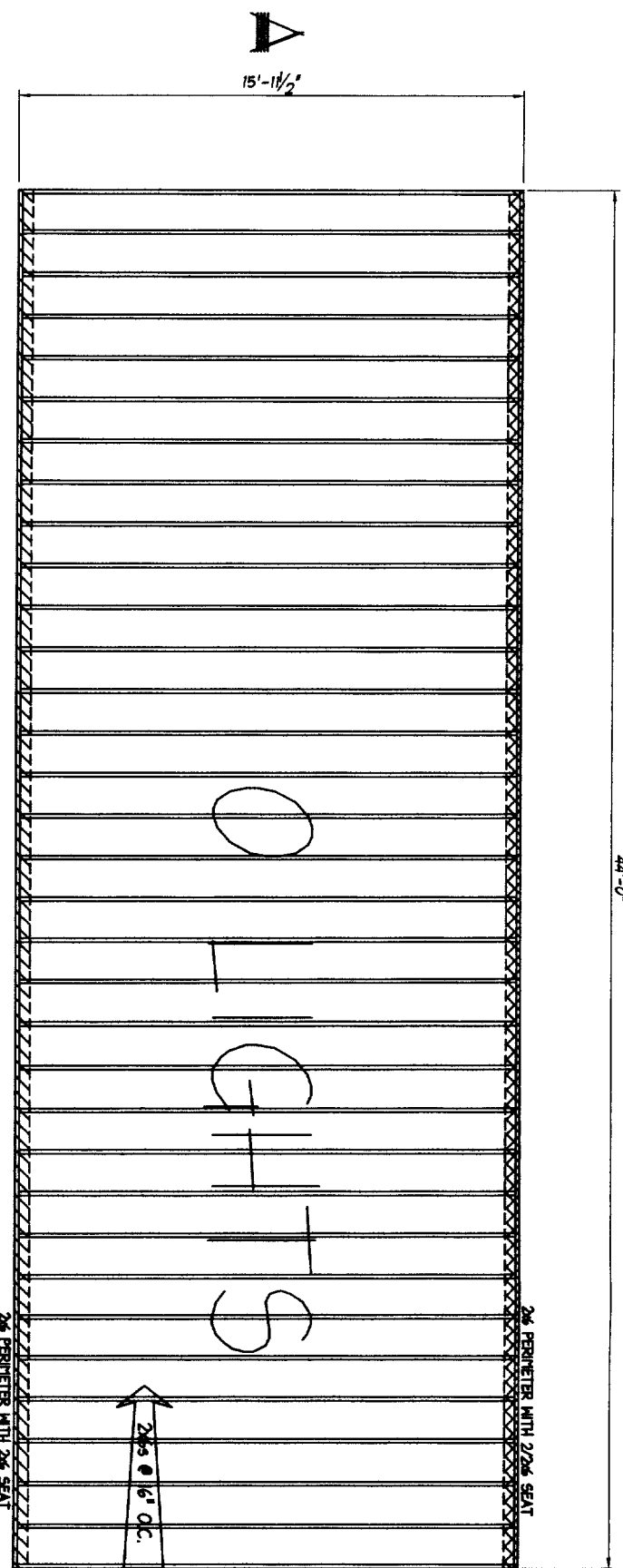


44'-0"



NOTE: ANY & ALL Material shipped loose for the site completion of the manufactured product is ULTIMATELY the SOLE RESPONSIBILITY OF THE BUILDER LISTED BELOW to install and finish.

ASTORIA
COLONIAL

1st CEILING FRAMING



NEW ENGLAND HOMES INC.

270 OCEAN ROAD
GREENLAND, N.H. 03040
© COPYRIGHT 2000

DRAWN	ATH	DATE	09/27/04
REV.		DATE	
SCALE	3/16" = 1'-0"		

9585

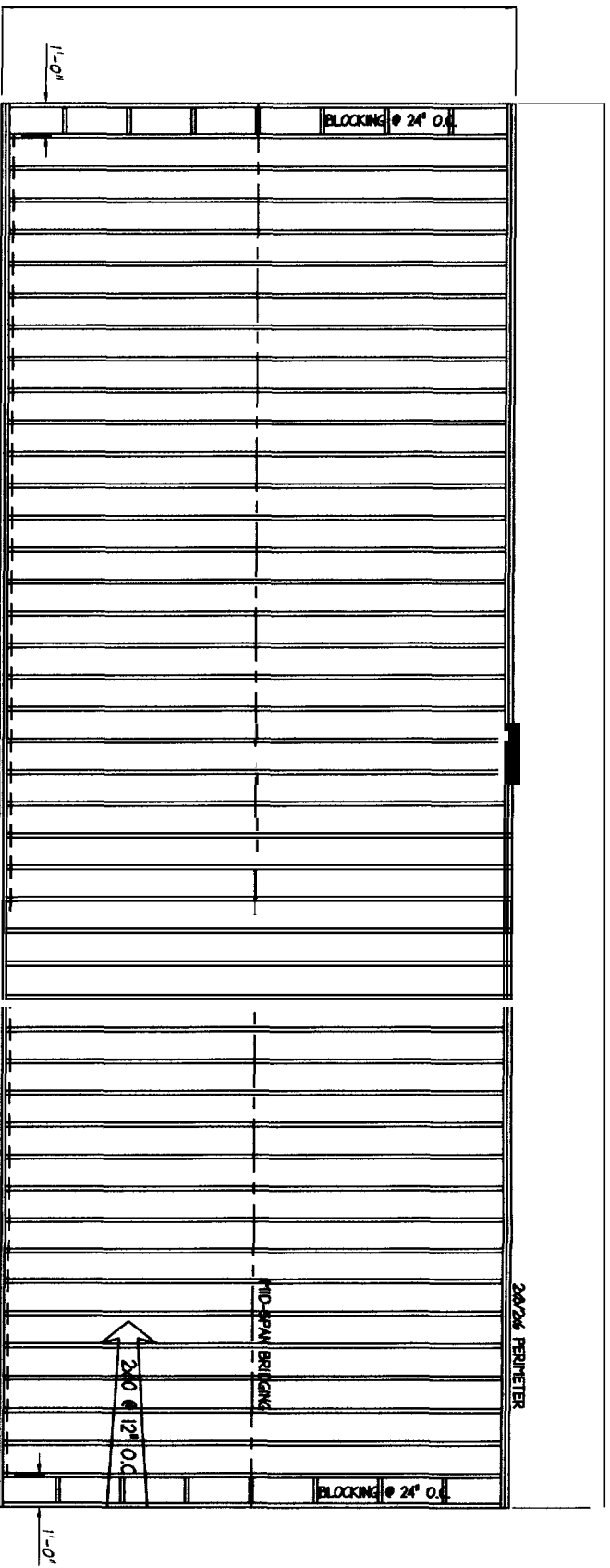
BLUE HORIZON DEVELOPMENT

0702

1/1'-0"

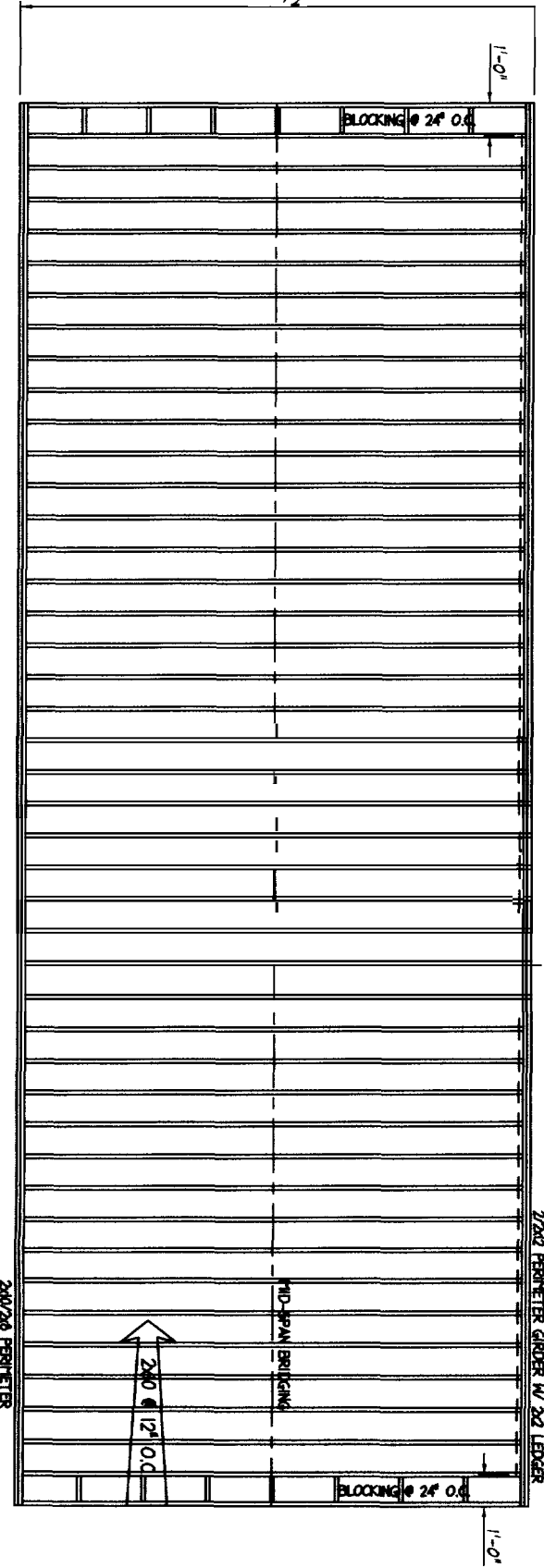
A

15'-1 1/2"



B

15'-1 1/2"



NOTE: ANY & ALL Material shipped loose for the site completion of the manufactured product is ULTIMATELY the SOLE RESPONSIBILITY OF THE BUILDER LISTED BELOW to install and finish.

**ASTORIA
COLONIAL**

1st FLOOR



NEW ENGLAND HOMES INC.

270 OCEAN ROAD
GREENLAND, NH 03040
© COPYRIGHT 2000

DRAWN	ATH	DATE	09/27/04
REV.		DATE	
SCALE	3/16" = 1'-0"		

**9585
BLUE HORIZON DEVELOPMENT**

0701

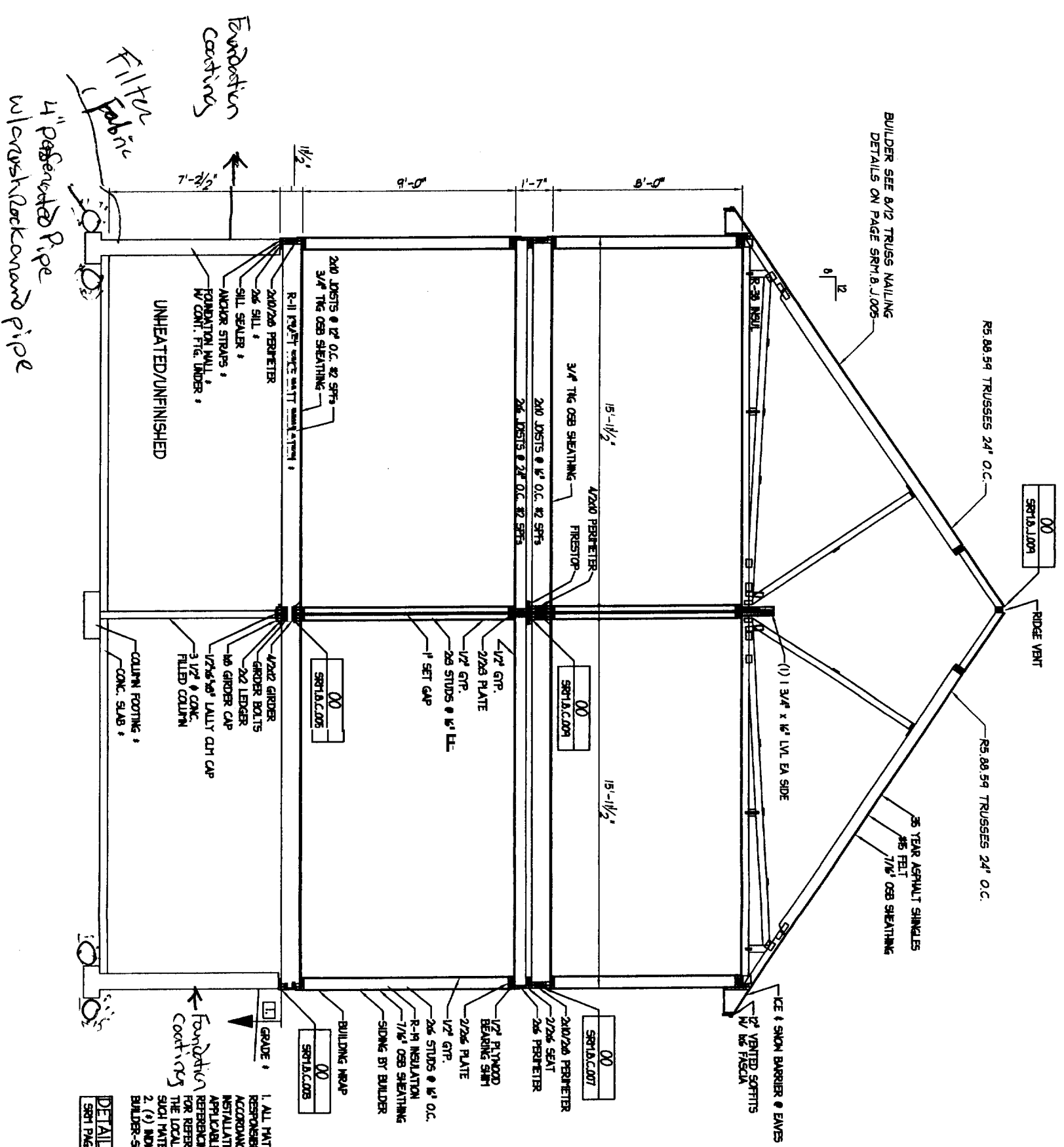
PRELIMINARY APPROVAL or REQUESTED CHANGES

- We have checked over this drawing for accuracy and compliance with prior requested revisions. I hereby authorize NEH to release it for Final Plans
- Approved for Final Drawings with the red-lined changes as noted on this drawing or attached notes.
- Additional Work Authorization requested with red-lined changes as noted on this drawing or attached notes.

Signature: _____

Date: _____

New England Homes Authorized Independent Builders duly authorized agent per contract agreement.



1. ALL MATERIALS BELOW THIS LINE ARE THE RESPONSIBILITY OF THE BUILDER, AND SHALL BE USED IN ACCORDANCE WITH THE MATERIAL MANUFACTURER'S INSTALLATION INSTRUCTIONS, IN CONFORMANCE WITH ALL APPLICABLE BUILDING CODES. ANY DETAILS DRAWINGS REFERENCE MATERIAL NOT SUPPLIED BY NEH, ARE FOR REFERENCE ONLY, AND SHOULD BE APPROVED BY THE LOCAL BUILDING INSPECTOR PRIOR TO USE. ALL SUCH MATERIAL/CONSTRUCTION MUST BE SITE INSPECTED.
 2. (2) INDICATES MATERIAL/LABOR ON SITE BY BUILDER-SEE NOTE 1.

DETAIL NO. SYMBOL DENOTES THE DETAIL NUMBER AND PAGE IN THE SITE REFERENCE MANUAL. BUILDER MUST REFER TO FOR REQUIRED SITE WORK.

NOTE: ANY & ALL Material shipped loose for the site completion of the manufactured product is ULTIMATELY the SOLE RESPONSIBILITY OF THE BUILDER LISTED BELOW to install and finish.

ASTORIA COLONIAL

SECTION A

New England Homes

NEW ENGLAND HOMES INC.

270 OCEAN ROAD
GREENLAND, NH 03840
© COPYRIGHT 2000

DRAWN	ATH	DATE	09/23/04
REV.		DATE	

SCALE 3/16" = 1'-0"

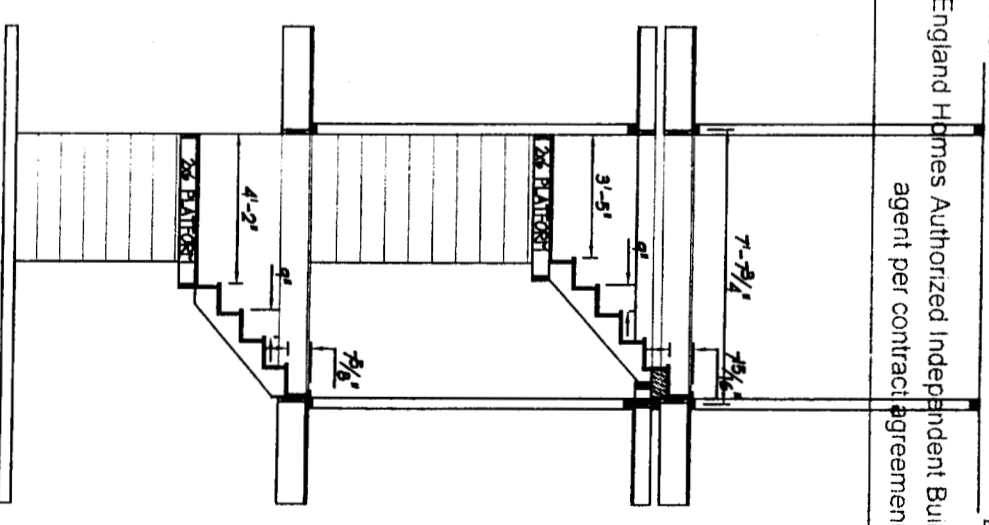
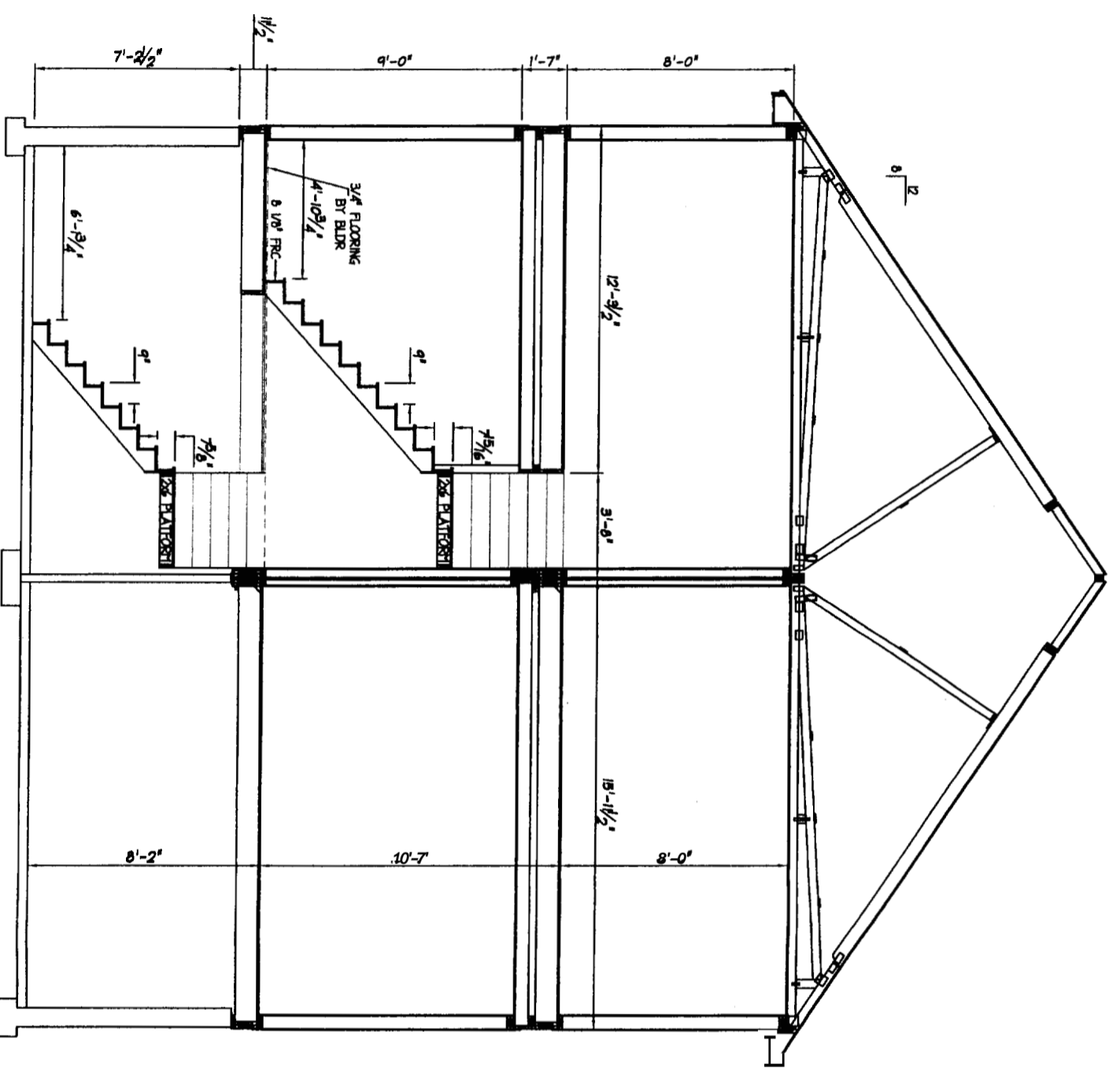
9589 BLUE HORIZON DEVELOPMENT

0500

PRELIMINARY APPROVAL or REQUESTED CHANGES

- We have checked over this drawing for accuracy and compliance with prior requested revisions. I hereby authorize NEH to release it for Final Plans
- Approved for Final Drawings with the red-lined changes as noted on this drawing or attached notes.
- Additional Work Authorization requested with red-lined changes as noted on this drawing or attached notes.

Signature: _____ Date: _____
 New England Homes Authorized Independent Builders duly authorized agent per contract agreement.



NOTE: ANY & ALL Material shipped loose for the site completion of the manufactured product is ULTIMATELY the SOLE RESPONSIBILITY OF THE BUILDER LISTED BELOW to install.

ASTORIA COLONIAL

STAR DETAILS



NEW ENGLAND HOMES INC.

270 OCEAN ROAD
 GREENLAND, NH 03040
 © COPYRIGHT 2000

DRAWN	ATH	DATE	09/23/04
REV.		DATE	
SCALE	3/16" = 1'-0"		

9589 BLUE HORIZON DEVELOPMENT

0800