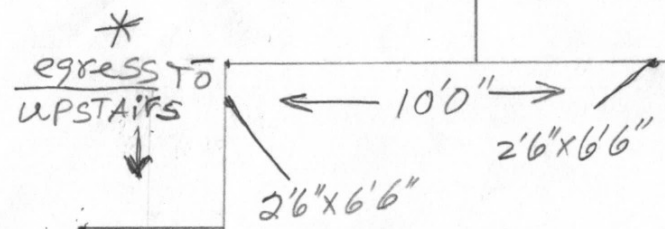


* All basement windows =
 W = 30" x 16 1/2"
 Type = Hopper basement
 Sills = 5' 9" to bottom

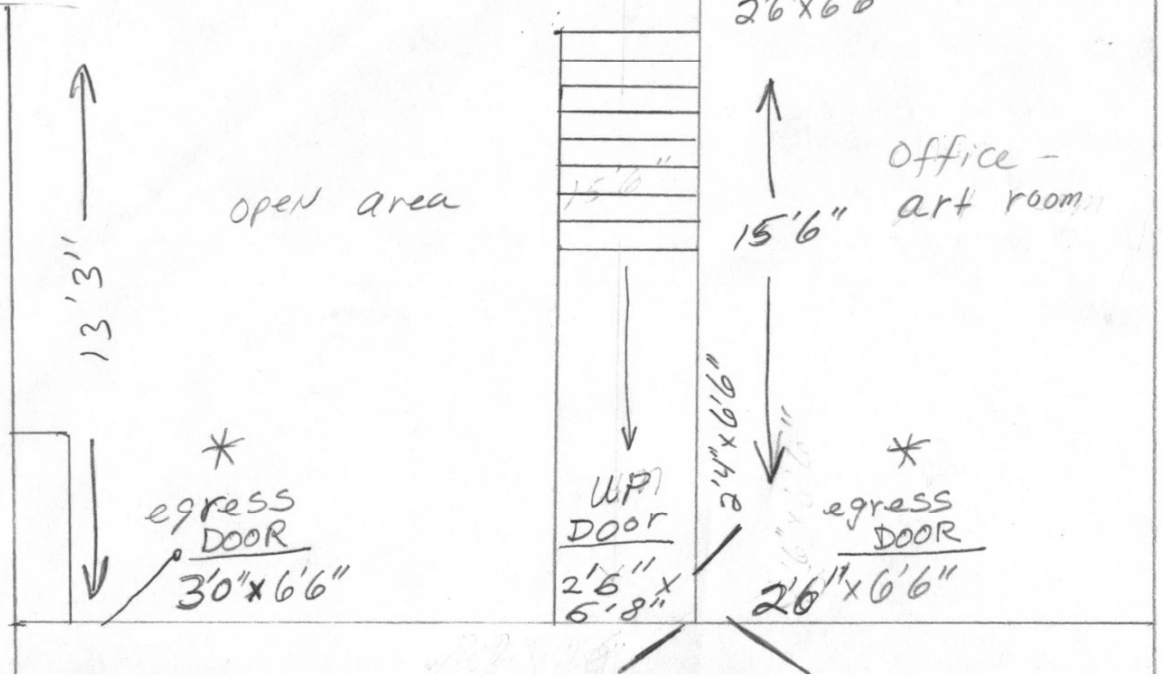
7'0" suspended ceiling
 height



61 Clapboard Road
 CBL 389 6011 001
 Bruce & Joanne Webber

Basement Floor Plan
 * REVISION #1
 Document A-1

Finished area
 scale = 1/4" to 1 ft



* Finish = 4" thick concrete - all areas
 * CW = 30" x 16 1/2" Hopper basement window
 * window sills = 5' 9" to bottom