
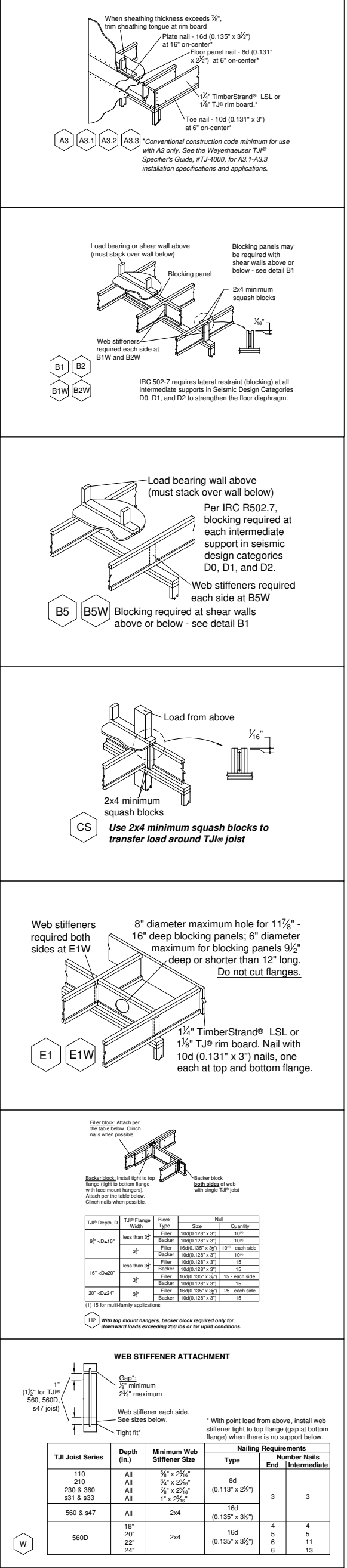


Structural Framers's Pocket Guide
 Access with your Smartphone
<http://www.ilevel.com/literature/IJ-9001.pdf>

 Weyerhaeuser



When sheathing thickness exceeds 1/2", blocking panels may be required above shear walls above or below, see detail B1.

IRC R502.7 requires lateral blocking at all intermediate supports in beams. Blocking is required at D, D1, and D2 to strengthen the floor diaphragm.

Load bearing wall above (must stack over wall below). Per IRC R502.7, blocking required at each intermediate support in seismic design categories D, D1, and D2.

Web stiffeners required each side of BSW above or below - see detail B1.

Use 2x4 minimum squish blocks to transfer load around T&G joist.

8" diameter maximum hole for 1 1/2" required both sides at E1W. 16" deep blocking panels, 6" diameter maximum for blocking panels 16" deep or shorter than 12" long. Do not cut flanges.

1 1/2" TimberStrand® LSL or 1 1/2" T&G rim board. Nail with 10d (0.131" x 3") nails, one each at top and bottom flange.

Web stiffener attachment details.

JOIST MILING REQUIREMENTS AT BEARING WALLS

Apply outdoor adhesive to all contact surfaces.

When specified on the layout, one of the above bracing systems is required.

THINK SAFETY- READ INSTALLATION INFORMATION BEFORE PROCEEDING
A COMPLETE JAVELIN™ LAYOUT INCLUDES THE ILEVEL™ FRAMER'S POCKET GUIDE.

PBO = POST BY OTHERS
BBO = BEAM BY OTHERS

WARNING
 Joists are unstable until braced laterally.

Bracing includes:
 • Blocking
 • Hangers
 • Rim Board
 • Box Joist

DO NOT walk on joists until braced. **INJURY MAY RESULT.**

DO NOT walk on joists that are lying flat.

DO NOT stack building materials on unbraced joists. **Stack only over beams or walls.**

WARNING NOTES:
 1. Lack of proper bracing during construction can result in serious accidents. Observe the following guidelines:
 2. Lateral strength, the braced end wall or an existing deck, must be established at the ends of the bay. This can also be accomplished by a braced end wall or an existing deck (sheathing) braced to the first floor joist at the end of the bay.
 3. Safety bracing of 1x4 (minimum) must be nailed to a brood end wall or sheathed area (as in note 2) and to each joist. Without this bracing, buckling, twisting or other in high probability under light construction loads, such as a worker or one layer of unbraced sheathing.
 4. Sheathing must be completely attached to each T&G joist before additional loads can be placed on the system.
 5. Ends of cantilevers require safety bracing on both the top and bottom flanges.
 6. The hanger must remain straight within 1/2" from true alignment.

▲ Weyerhaeuser, ILevel®, Microlam®, Parallels®, Silent Floor®, TimberStrand®, T&G, T&B and True Joists are registered trademarks of Weyerhaeuser NR. © 2012 Weyerhaeuser NR Company. All rights reserved.

CONTRACTOR TO VERIFY ALL FRAMING AREAS, DIMENSIONS, OPENINGS, LOADING CONDITIONS, ETC. WITH ARCHITECT/ENGINEER PRIOR TO CONSTRUCTION TO ENSURE COMPLIANCE WITH ARCHITECTURAL DRAWINGS.

iLevel® Green Estimator

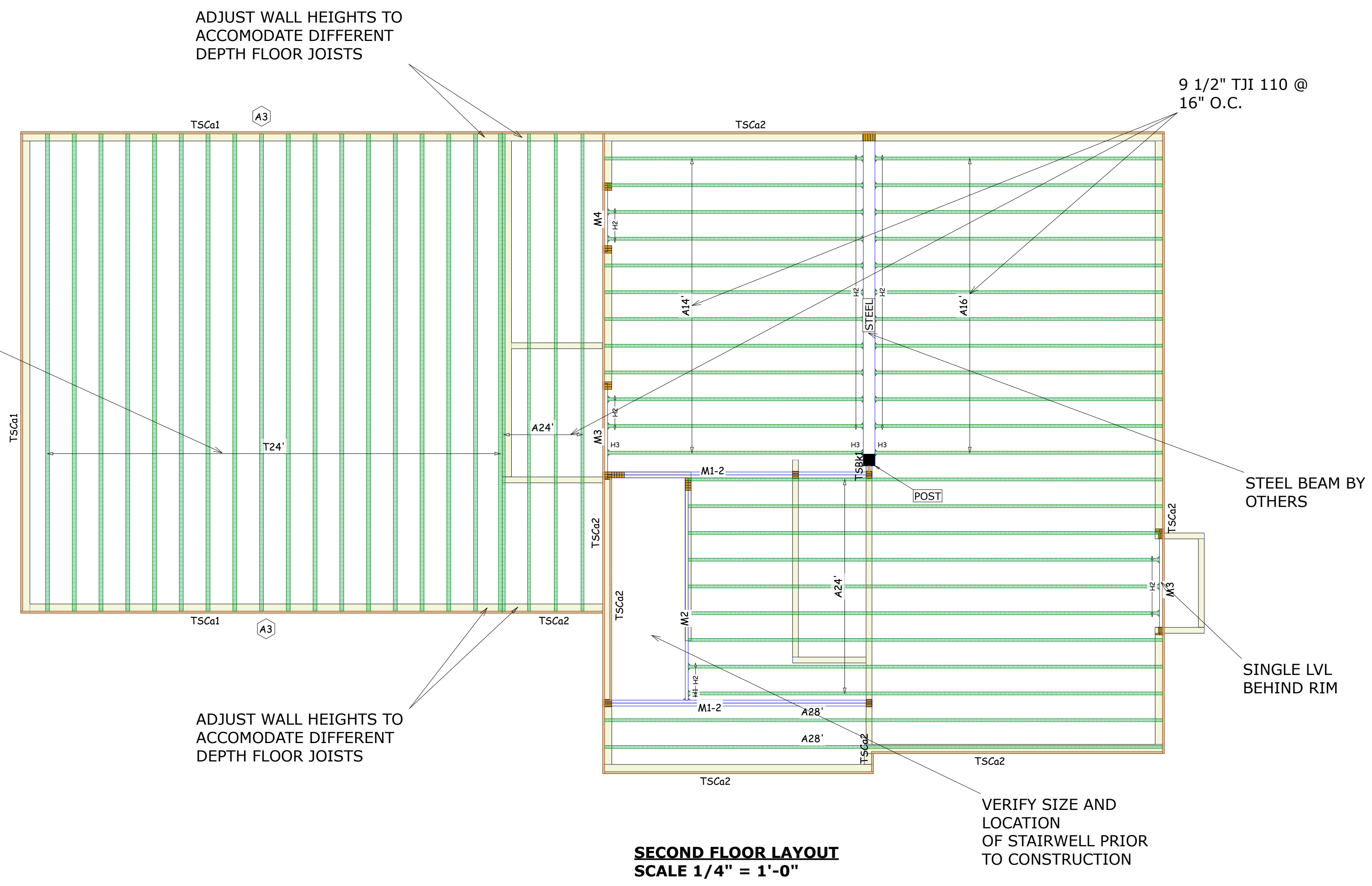
Contribution to National Green Bldg Std:	
Contribution to LEED® for Homes:	

The points identified above indicate the potential number of green building points allowed by the ICC-700 2008 National Green Building Standard or the U.S. Green Building Council's LEED® for Homes based on the iLevel® structural frame solutions represented on this project. You are advised to confirm point calculations with the appropriate authorized organization. Contact Level Technical Services for recommendations on achieving additional green points.



BlueLinX Corporation
 419 Maple Street
 Bellingham, MA 02019
 Phone: (508) 966-5546
 Fax: (508) 966-5553

SECOND FLOOR LAYOUT
 REQUITA SPEC #2
 Portland, Maine
 DRAWN BY: Gms Burnett
 SCALE: 1/4" = 1'-0"
 DATE: 2/6/2017



SECOND FLOOR LAYOUT
 SCALE 1/4" = 1'-0"

Framing Connector Summary

PlotID	Qty	Manuf	Product	Design Method	Face Nails	Top Nails	Member Nails	Skew	Slope	Backer Blks	Filler	Web Stiff
H1	1	Simpson	IUS1.81/9.5	Geometry Only	8- 10d x 1-1/2"	-	2- 10d x 1-1/2"	-	-	No	No	No
H2	31	Simpson	IUS1.81/9.5	Geometry Only	8- 10d x 1-1/2"	-	-	-	-	No	No	No
H3	3	Simpson	IUS1.81/9.5	Undesigned	8- 10d x 1-1/2"	-	-	-	-	No	No	No

Floor

PlotID	Length	Product	Plies	Net Qty
A28'	28' 0"	9 1/2" TJI@ 110	1	2
A24'	24' 0"	9 1/2" TJI@ 110	1	13
A16'	16' 0"	9 1/2" TJI@ 110	1	12
A14'	14' 0"	9 1/2" TJI@ 110	1	12
T24'	24' 0"	16" TJI@ 360	1	18
TSCa1	16' 0"	1 1/4" x 16" 1.3E TimberStrand® LSL	1	5
TSCa2	16' 0"	1 1/4" x 9 1/2" 1.3E TimberStrand® LSL	1	9
TSBk1	1' 0"	1 1/4" x 9 1/2" 1.3E TimberStrand® LSL	1	1
6 3/4"	5/8" x 2 5/16" Web Stiffeners		1	6
	23/32"x48"x96" Weyerhaeuser Edge Gold Panel (0/24) T&G SF		1	50

Beam/Post

PlotID	Length	Product	Plies	Net Qty
M1-2	14' 0"	1 3/4" x 9 1/2" 2.0E Microlam® LVL	2	4
M2	12' 0"	1 3/4" x 9 1/2" 2.0E Microlam® LVL	1	1
M3	6' 0"	1 3/4" x 9 1/2" 2.0E Microlam® LVL	1	2
M4	4' 0"	1 3/4" x 9 1/2" 2.0E Microlam® LVL	1	1

Design Criteria:
 Floor Loading
 Live Load = 40 psf
 Dead Load = 12 psf

DESCRIPTION

REV	DATE	DESCRIPTION
1		
2		
3		
4		
5		

BlueLinX now offers Precision End Trim Pre-Cut Blocking panels for on center spacings of 12", 16" and 24". All panels are undercut by 1/8" for ease of installation. Speak with your sales representative or design team for more information on these and other great products specified on this plan.

PROJECT NUMBER:
 SHEET
2 OF 2