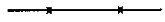


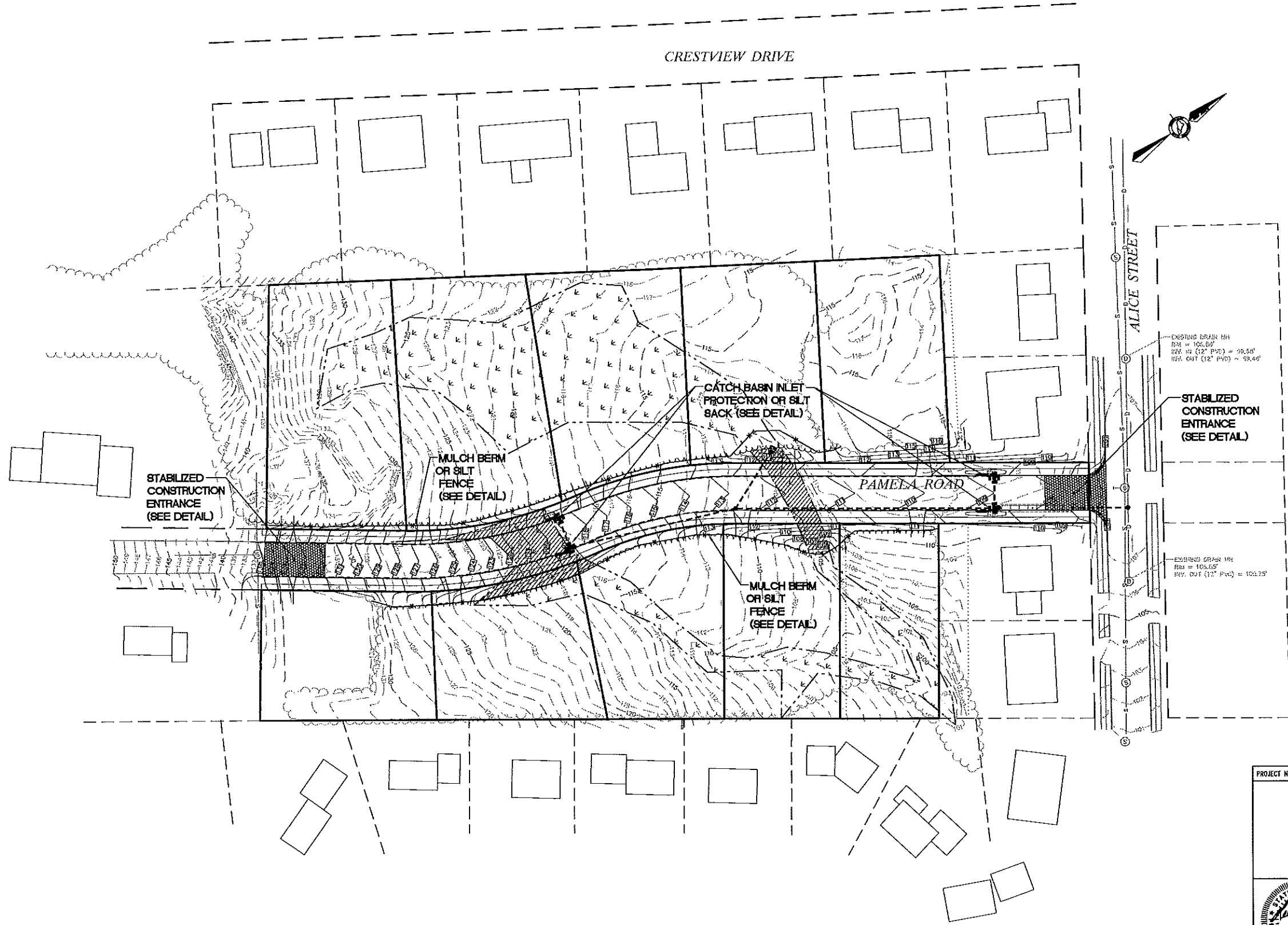


LEGEND

-  MULCH BERM/EROSION CONTROL MIX OR SILT FENCE
-  STABILIZED CONSTRUCTION ENTRANCE
-  CATCH BASIN INLET PROTECTION

NOTES

- CONSTRUCTION MANAGEMENT PLAN:**
- CONSTRUCTION SEQUENCE FOR PAMELA ROAD FROM STATION 0+00 TO 8+00
1. MOBILIZE AND SET UP NECESSARY CONSTRUCTION SIGNS, CONES AND FLAGGERS FOR TRAFFIC CONTROL.
 2. INSTALL EROSION CONTROL MEASURES PER MAINE EROSION AND SEDIMENT CONTROL BMP'S MANUAL PROVIDED BY THE BUREAU OF LAND AND WATER QUALITY AT THE MAINE DEPARTMENT OF ENVIRONMENTAL PROTECTION TO STA 7+50±.
 3. CUT VEGETATION TO ALLOW PASSAGE FOR EQUIPMENT AND MATERIALS.
 4. INSPECT ALL EROSION CONTROL MEASURES FOR DAMAGE FROM FALLEN VEGETATION AND REPAIR AS NECESSARY.
 5. INSTALL CONSTRUCTION ENTRANCE PRIOR TO ANY HAUL ACTIVITY.
 6. COMMENCE EXCAVATION, STUMP/GRUB AND REMOVE TOPSOIL. STOCKPILE LOAM ON LOT #40 IN STABILIZED AREA.
 7. TRENCH AND INSTALL UTILITIES, INSTALL FOCALPOINT BIOFILTRATION SYSTEM AND ISOLATOR ROW.
 8. CONSTRUCT ROAD IN 12-INCH LIFTS.
 9. FINE GRADE ROADWAY, SIDEWALK AND ESPLANADE.
 10. INSTALL CURB AND PAVE ROADWAY AND SIDEWALK.
 11. LOAM, SEED AND STABILIZE ROAD SIDE-SLOPES.



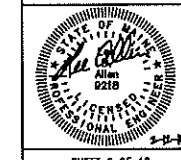
Revised	By	Date	Change
5	SMA	3/12/15	REVISED OWNER/APPLICANT
2	TAL	11/17/14	REVISED PER CITY COMMENTS
1	SMA	11/11/14	REVISED PER CITY COMMENTS

PROJECT NUMBER: 33229.02 ACAD FILE: 33229-EROSION.DWG SCALE: 1" = 40' DATE: AUGUST 4, 2014

EROSION & SEDIMENTATION CONTROL PLAN

Project Name:
PAMELA ROAD EXTENSION
 PAMELA ROAD, PORTLAND, MAINE 04101

Client/Property:
GENEVA VENTURES, LLC
 190 US Route 1, PMB 161, FALMOUTH, MAINE 04105



SURVEYING ENGINEERING LAND PLANNING
Northeast Civil Solutions
 INCORPORATED
 153 US ROUTE 1, SCARBOROUGH, MAINE 04074

tel: 207.883.1000 fax: 207.883.1001 e-mail: info@northeastcivilsolutions.com
 800.882.2227

P:\LAND PROJECTS\33000\33229.02\33229-EROSION.DWG