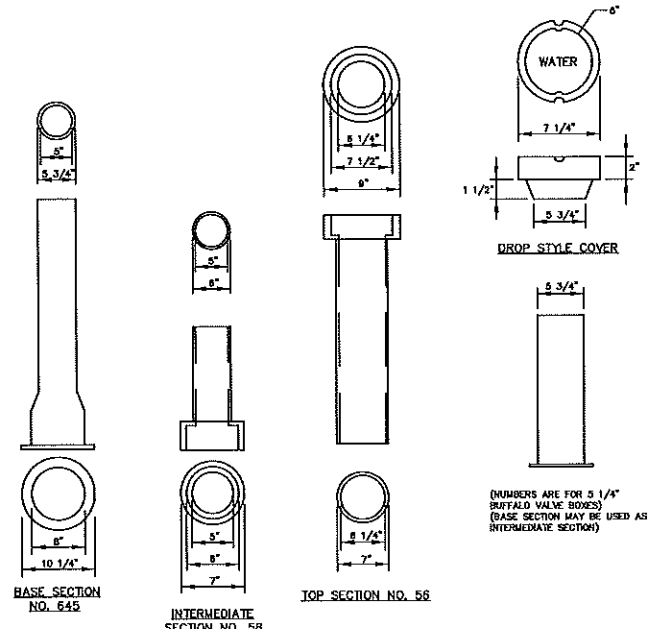
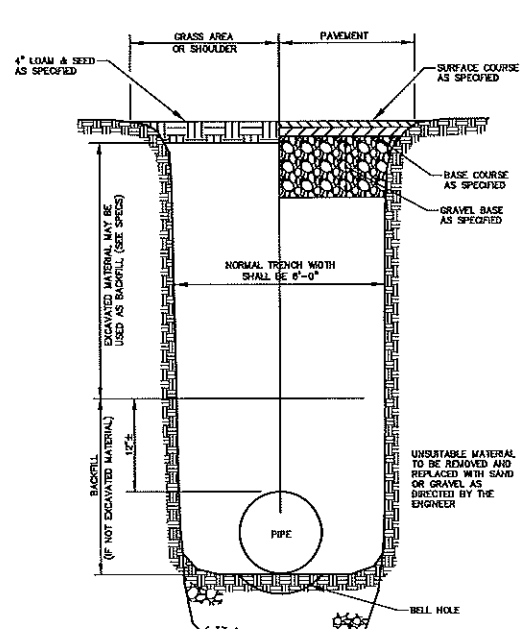


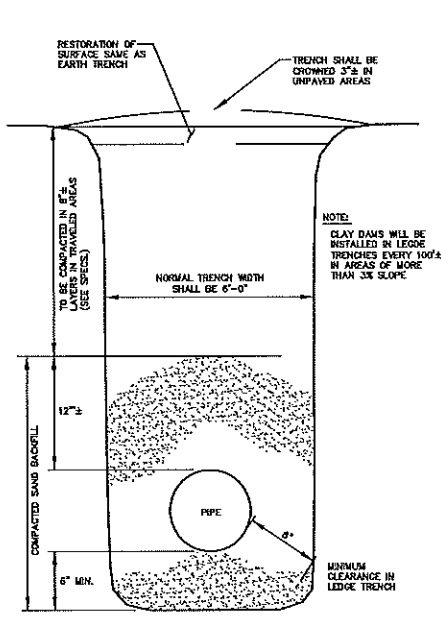
NOTE: ANY EXTENSION OF SERVICE BOX REQUIRES A COUPLING & 1" THREADED PIPE



VALVE BOX & COVER
NOT TO SCALE

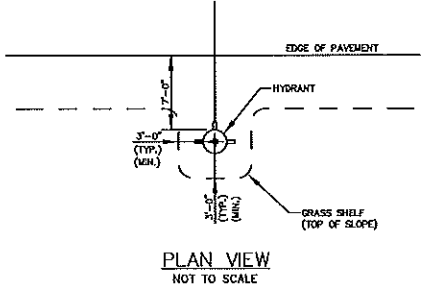


SECTION THRU EARTH TRENCH
NOT TO SCALE

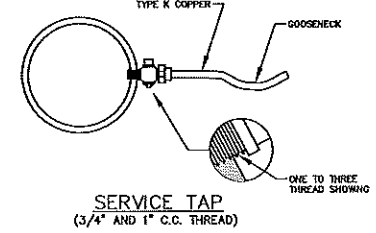


SECTION THRU LEDGE TRENCH
NOT TO SCALE

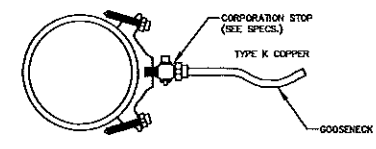
*** NOTE: ***
ALL DUCTILE IRON PIPE AND FITTINGS SHALL BE POLYWRAPPED



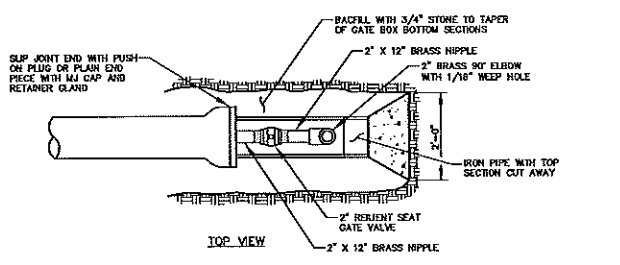
PLAN VIEW
NOT TO SCALE



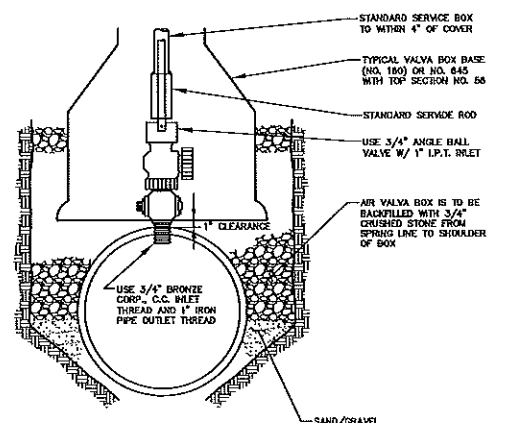
SERVICE TAP
(3/4" AND 1" C.C. THREAD)



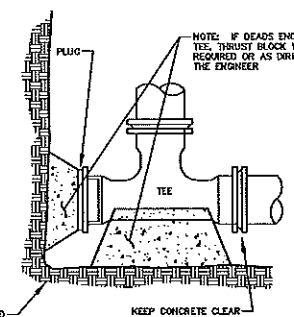
SERVICE SADDLE
(1 1/2" AND 2" C.C. OR IRON PIPE THREAD)



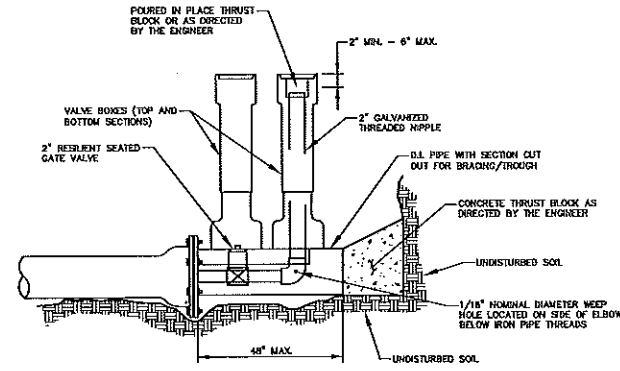
STANDARD 2" BLOW OFF
NOT TO SCALE



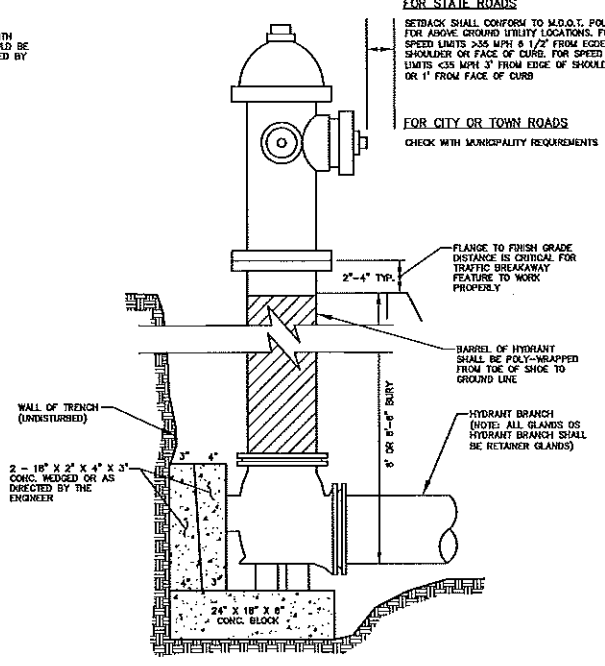
TYPICAL AIR VALVE (1")
NOT TO SCALE



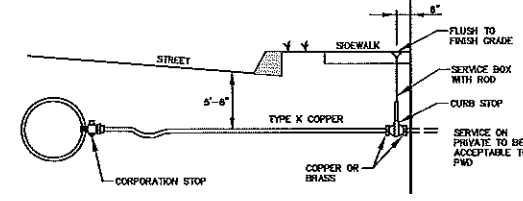
STANDARD TEE BLOCKING
NOT TO SCALE



STANDARD BEND BLOCKING
NOT TO SCALE



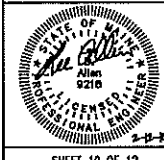
TYPICAL HYDRANT INSTALLATION DETAIL
NOT TO SCALE



TYPICAL SERVICE CONNECTION
NOT TO SCALE

Revised	By	Date	Change
5	SMA	3/10/15	REVISED OWNER/APPLICANT
1	SMA	10/11/11	REVISED PER TOWN COMMENTS

PROJECT NUMBER: 33229.02
 ACAD FILE: 33229-DETAILS.DWG
 SCALE: HTS
 DATE: AUGUST 4, 2014
CONSTRUCTION DETAILS - SHEET 3
 Project Name and Location:
PAMELA ROAD EXTENSION
 PAMELA ROAD, PORTLAND, MAINE 04101
 Prepared For:
GENEVA VENTURES, LLC
 190 US Route 1, Falmouth, MAINE 04105



SURVEYING ENGINEERING LAND PLANNING
Northeast Civil Solutions
 INCORPORATED
 153 US ROUTE 1, SCARBOROUGH, MAINE 04074
 Tel: 207.883.1000 Fax: 207.883.1001
 800.882.2227 info@northeastcivilsolutions.com

© 2014 PROJECT 33229.02/33229.02-DETAILS.DWG