

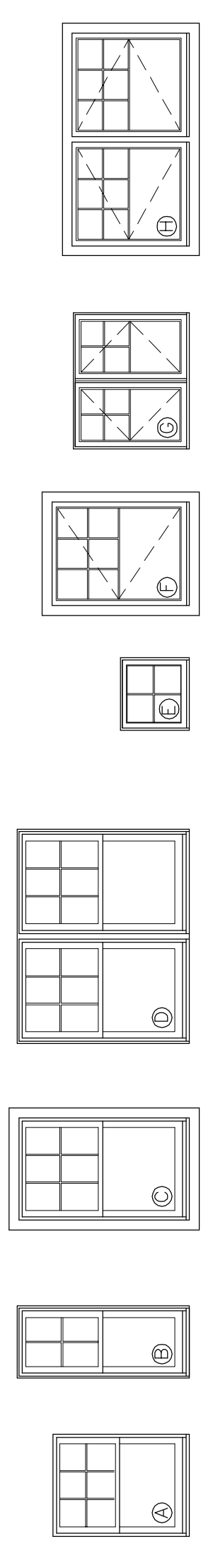
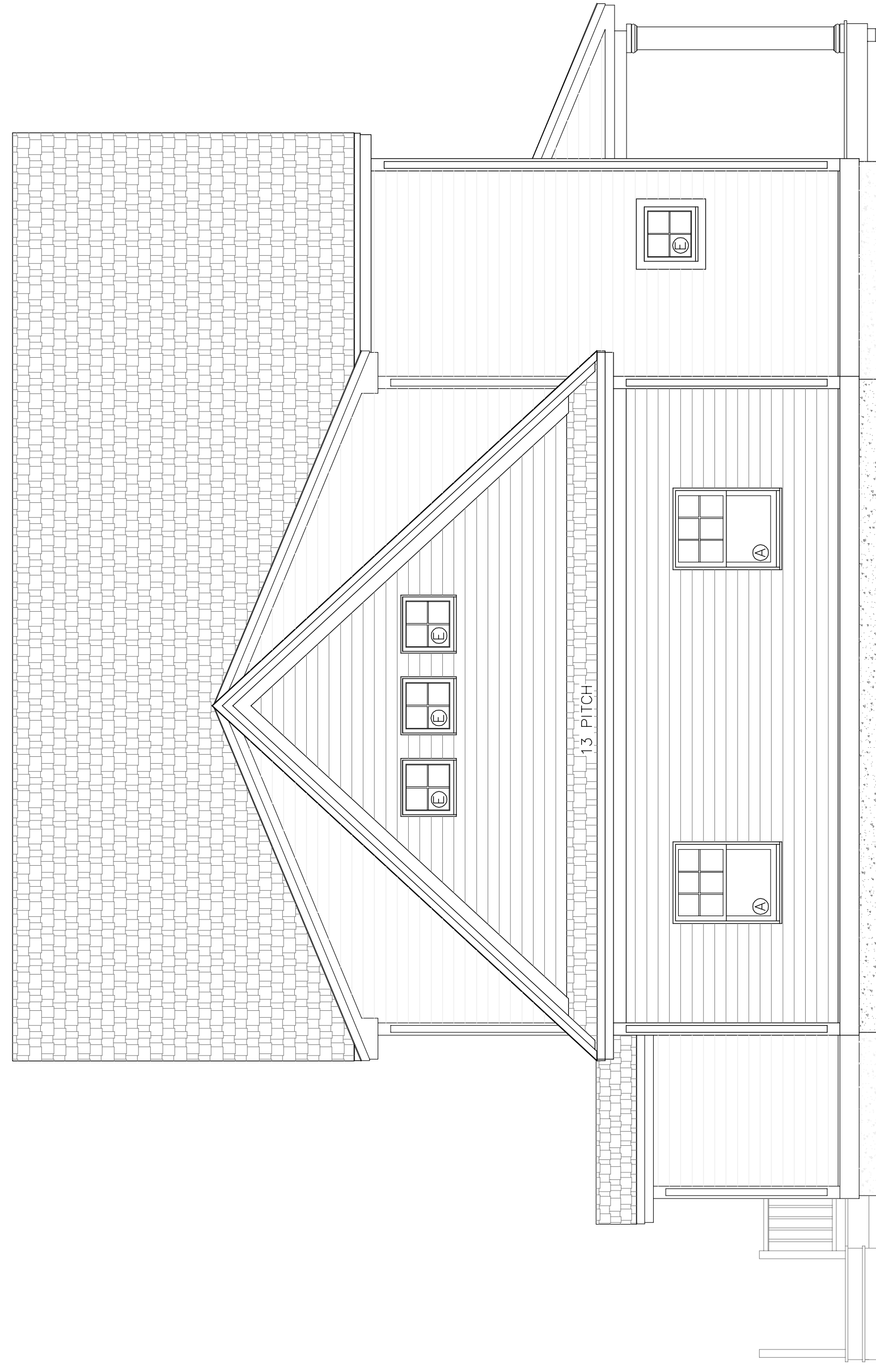
**1** FRONT ELEVATION  
1/4" = 1'-0"

NUM MANUF. #	R.O. - "W" x "H"	QTY.	GRILLS	NOTES
(A) TW210310	3'-0 1/2" x 4'-0 1/2"	5	6/1	DBL HUNG
(B) TW18410	1'-10 1/2" x 5'-0 1/2"	2	4/1	DBL HUNG
(C) TW210410	3'-0 1/2" x 5'-0 1/2"	8	6/1	DBL HUNG, EGRESS
(D) TW210310	5'-11 1/2" x 5'-0 1/2"	2	6/1	MULLED DBL HUNG, EGRESS
(E) A21	2'-0 1/2" x 2'-0 1/2"	4	4	LITE AWNING, OPERABLE
(F) CXW14	3'-0 1/2" x 4'-0 1/2"	1	6/1	CASEMENT
(G) C235	4'-0 1/2" x 3'-5 1/2"	1	6/1	MULLED CASEMENT
(H) CXW235	6'-0 1/2" x 3'-5 1/2"	1	6/1	MULLED CASEMENT
(I)				

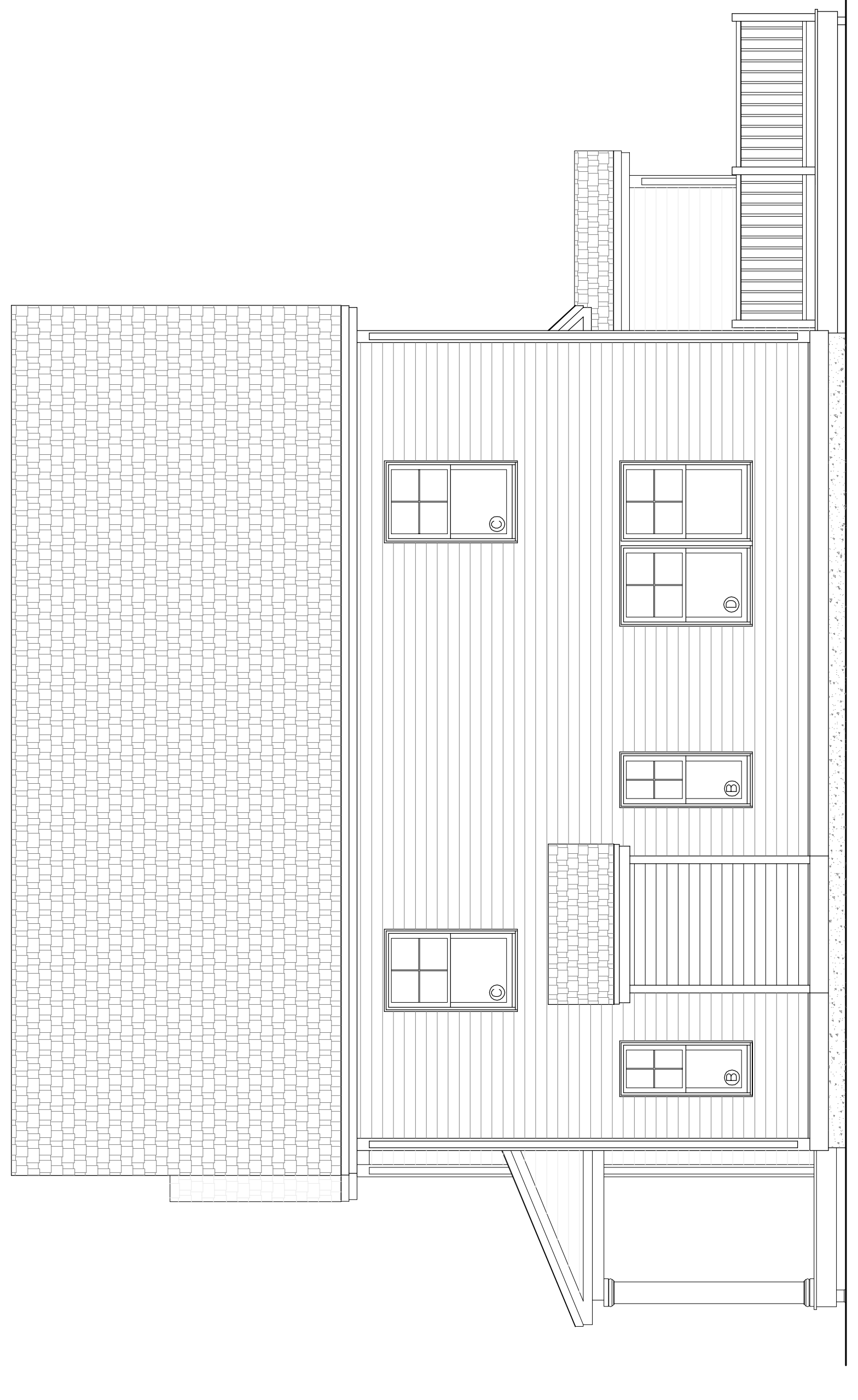
  

FRENCHWOOD GLIDING PATIO DOOR	QTY.	NOTES
(J) FWG60611	4	LITE FRENCHWOOD GLIDER
(K)		
THERMA-TRU DOORS		
(L) 3/0X6/8	1	W/ 12" SIDE LITES ONE SIDE
(M) 3/0X6/8	1	THERM-TRU DR T.B.D.
(N) 2/8X6/8	1	THERM-TRU DR T.B.D.
(O) 2/8X6/8	1	20 MIN FIRE DOOR

**2** LEFT SIDE ELEVATION  
1/4" = 1'-0"



**4** REAR ELEVATION  
1/4" = 1'-0"



**3** RIGHT SIDE ELEVATION  
1/4" = 1'-0"