

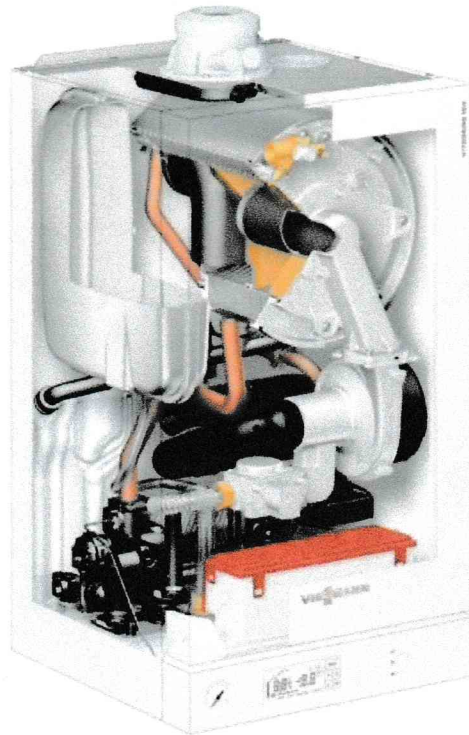


## VITODENS 100-W

Gas-fired wall-mounted condensing boiler with modulating stainless steel cylinder burner and Inox-Radial heat exchanger surface. Rated input: 21 to 125 MBH

📄 [Flyer \(PDF 367 KB\)](#)

# Vitodens 100-W - The perfect mix of performance, quality and value



viessmann

## The benefits at a glance

- Vitodens 100-W, B1HA space heating boiler and Vitodens 100-W, B1KA combi boiler fits any home and budget with high performance at an attractive price.
- Outstanding efficiency of 95% A.F.U.E. on all models.
- Low-emission combustion with fully-modulating Viessmann stainless steel Matrix cylinder burner for natural gas or propane.
- User-friendly backlit LCD touchscreen boiler control.
- Lasting performance with proven Viessmann stainless steel Inox-Radial heat exchanger constructed to CSA B51 and ASME Section IV.
- Suitable for altitude levels of up to 10,000 ft. / 3,000 m.
- Easy installation and service with pipe connections located at the bottom and serviceable components accessible from the front.
- Extremely quiet operation; quieter than most refrigerators.
- Built-in on-demand domestic hot water (DHW) with Vitodens 100-W, B1KA Combi boiler.

\* Vitodens 100-W, B1KA available now

## Overview

---

### Rated input

21 to 125 MBH - 6.2 to 36.6 kW

---

### Efficiency (AFUE)

95%

---

### Fuel



Natural gas, propane gas

---

### Application range



For residential homes and apartment units, new buildings and retrofits

---

### DHW heating

On-demand DHW available with B1KA Combi boiler (up to 3.6 GPM)

---

### Warranty

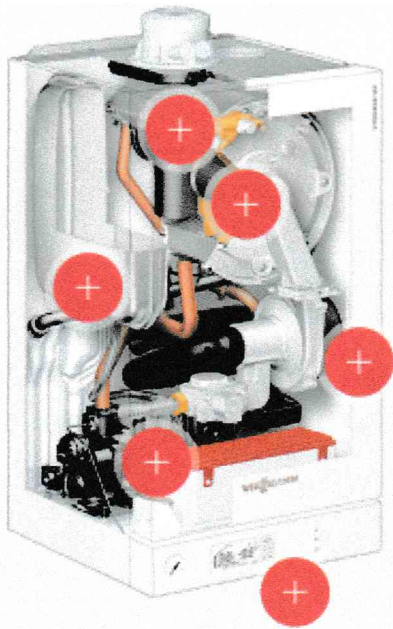
Limited lifetime warranty in residential applications

---

### Additional features

Compact, lightweight wall-mount design and zero clearance to combustibles make it a great choice for limited-space installations.

[> Close details](#)



### Technical data

Parameter	Unit	Model	Model	Model	Technical Description
Rated input (Max)	kW	24.0	24.0	24.0	Maximum operating pressure: 3 bar (3.0 bar) for 20°C water temperature. Maximum operating pressure: 2 bar (2.0 bar) for 120°C water temperature. Maximum operating pressure: 1.5 bar (1.5 bar) for 130°C water temperature. Maximum operating pressure: 1.0 bar (1.0 bar) for 150°C water temperature. Maximum operating pressure: 0.5 bar (0.5 bar) for 180°C water temperature.
Rated input (Nom)	kW	20.0	20.0	20.0	
Efficiency	%	92.0	92.0	92.0	
Max. hot water temperature	°C	120	120	120	
Max. hot water temperature (with 30°C inlet)	°C	120	120	120	
Max. hot water temperature (with 40°C inlet)	°C	120	120	120	
Max. hot water temperature (with 50°C inlet)	°C	120	120	120	
Max. hot water temperature (with 60°C inlet)	°C	120	120	120	
Max. hot water temperature (with 70°C inlet)	°C	120	120	120	
Max. hot water temperature (with 80°C inlet)	°C	120	120	120	
Water flow	l/h	150	150	150	
Water flow (with 30°C inlet)	l/h	150	150	150	
Water flow (with 40°C inlet)	l/h	150	150	150	
Water flow (with 50°C inlet)	l/h	150	150	150	
Water flow (with 60°C inlet)	l/h	150	150	150	
Water flow (with 70°C inlet)	l/h	150	150	150	
Water flow (with 80°C inlet)	l/h	150	150	150	
Water flow (with 90°C inlet)	l/h	150	150	150	
Water flow (with 100°C inlet)	l/h	150	150	150	
Water flow (with 110°C inlet)	l/h	150	150	150	
Water flow (with 120°C inlet)	l/h	150	150	150	
Water flow (with 130°C inlet)	l/h	150	150	150	
Water flow (with 150°C inlet)	l/h	150	150	150	
Water flow (with 180°C inlet)	l/h	150	150	150	



- ↓ [Flyer \(PDF 367 KB\)](#)
- ↓ [Brochure \(PDF 469 KB\)](#)
- ↓ [Technical data manual \(PDF 999 KB\)](#)
- ↓ [Application guide \(PDF 3 MB\)](#)

## Downloads