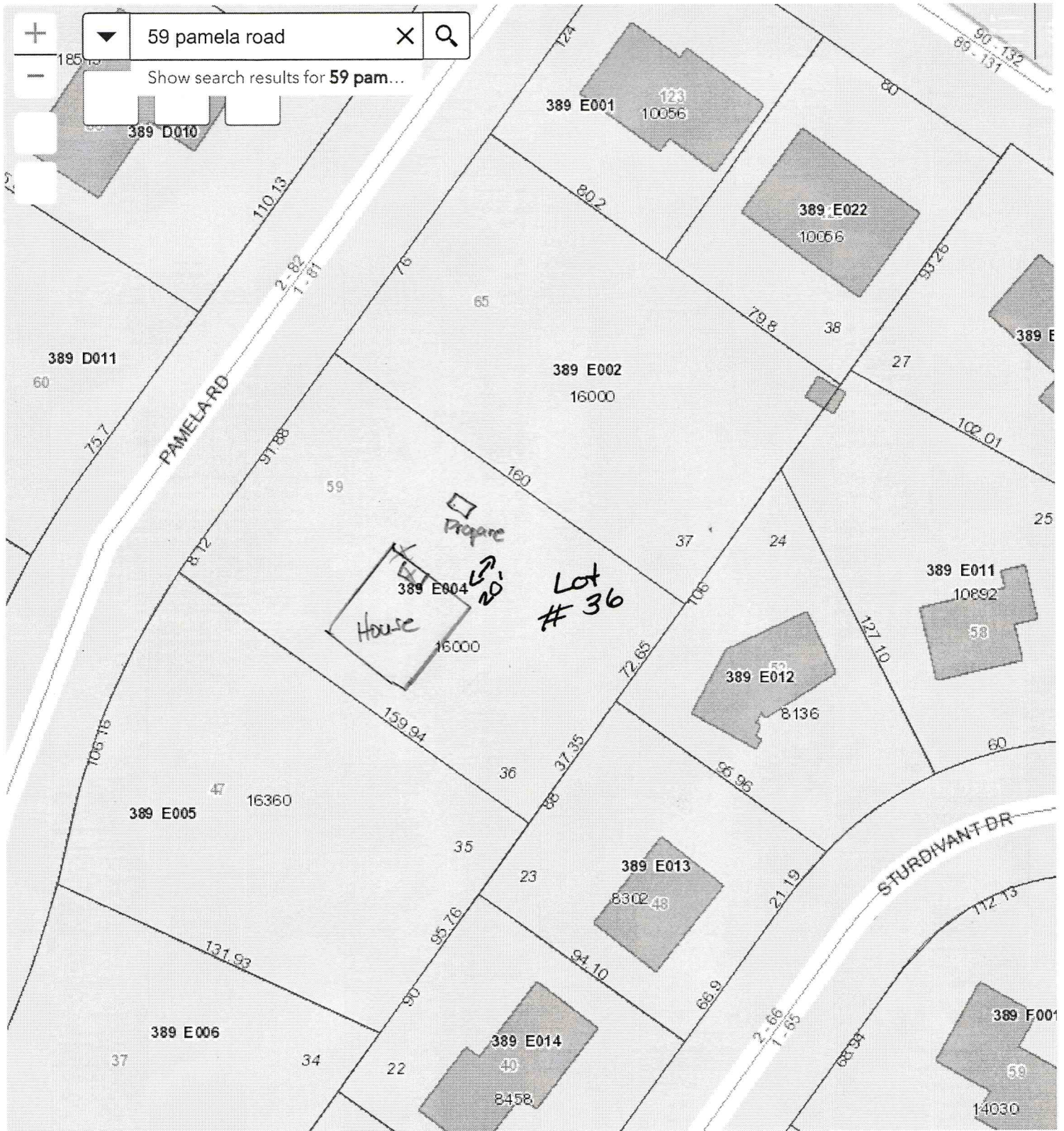


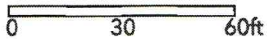


City of Portland Maine GIS Viewer

with Web AppBuilder for ArcGIS



*Lot # 36 Pamela Rd.
Propane placement*



2,921,292.347 323,261.312 Feet

Lot # 36 Pamela Rd
 HVAC and tank placement



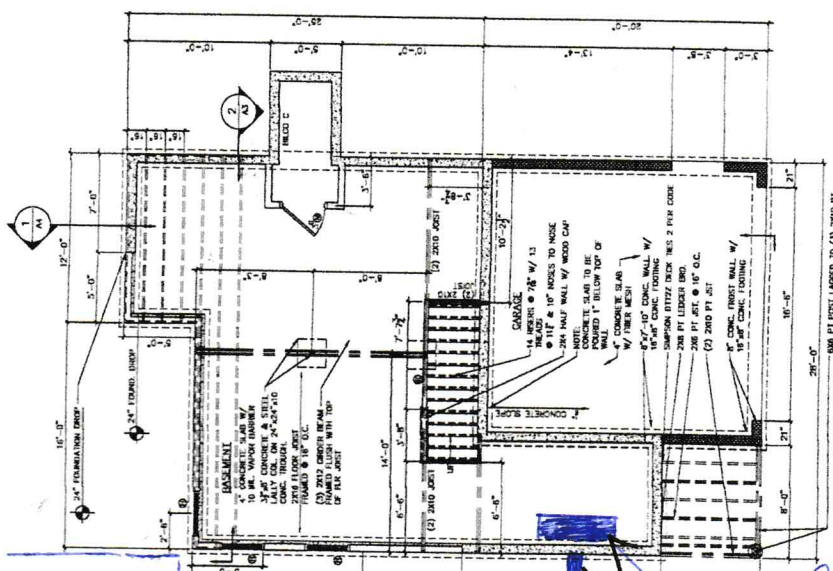
13 WHITE PINE BY
 PALM BEACH COUNTY
 C.E.L. (305) 632-53
 MURPHY@CJHE.COM

PROJECT N:
 REQUIRE SPEC #:
 PROJECT LOC:
 PORTLAND, MAI
 BUILT BY:

SHEET NAW
 FOUND &
 FLR PLAN
 DETAILS

SCALE: AS SH
 DATE: 04/01
 FILE NUMBER: 17-1
 REVISIONS:
 DRAWN BY: M
 CHECKED BY: M
 ALL DIMENSIONS UNLESS OTHERWISE SPECIFIED ARE IN FEET AND INCHES. DIMENSIONS SHALL BE TO FACE UNLESS OTHERWISE SPECIFIED. ALL WALLS AND PARTITIONS SHALL BE CONCRETE UNLESS OTHERWISE SPECIFIED. ALL FLOORING SHALL BE AS SHOWN OR AS NOTED. ALL CEILING SHALL BE AS SHOWN OR AS NOTED. ALL ROOFING SHALL BE AS SHOWN OR AS NOTED. ALL MECHANICAL AND ELECTRICAL SHALL BE AS SHOWN OR AS NOTED. ALL FINISHES SHALL BE AS SHOWN OR AS NOTED. ALL MATERIALS SHALL BE AS SHOWN OR AS NOTED. ALL WORK SHALL BE IN ACCORDANCE WITH THE LATEST EDITIONS OF THE INTERNATIONAL BUILDING CODES AND ALL APPLICABLE LOCAL ORDINANCES.

NO.	DESCRIPTION	DATE
1	CONCRETE	1/13
2	STEEL	1/13
3	MECHANICAL	1/13
4	ELECTRICAL	1/13
5	PLUMBING	1/13
6	PAINT	1/13
7	FINISHES	1/13
8	ROOFING	1/13
9	FOUNDATION	1/13
10	STRUCTURE	1/13
11	MECHANICAL	1/13
12	ELECTRICAL	1/13
13	PLUMBING	1/13
14	PAINT	1/13
15	FINISHES	1/13
16	ROOFING	1/13
17	FOUNDATION	1/13
18	STRUCTURE	1/13
19	MECHANICAL	1/13
20	ELECTRICAL	1/13
21	PLUMBING	1/13
22	PAINT	1/13
23	FINISHES	1/13
24	ROOFING	1/13
25	FOUNDATION	1/13
26	STRUCTURE	1/13
27	MECHANICAL	1/13
28	ELECTRICAL	1/13
29	PLUMBING	1/13
30	PAINT	1/13
31	FINISHES	1/13
32	ROOFING	1/13
33	FOUNDATION	1/13
34	STRUCTURE	1/13
35	MECHANICAL	1/13
36	ELECTRICAL	1/13
37	PLUMBING	1/13
38	PAINT	1/13
39	FINISHES	1/13
40	ROOFING	1/13
41	FOUNDATION	1/13
42	STRUCTURE	1/13
43	MECHANICAL	1/13
44	ELECTRICAL	1/13
45	PLUMBING	1/13
46	PAINT	1/13
47	FINISHES	1/13
48	ROOFING	1/13
49	FOUNDATION	1/13
50	STRUCTURE	1/13



BASE BY FOOT LARGED TO (3) 2X10 PT
 BASE BY FOOT LARGED TO (3) 2X10 PT
 PRE-CAST CONCRETE REIN WITH BOLD CAST.

FOUNDATION PLAN
 17-1-EP

Abutters
 Property
 Line

40'

200 Propane tube
 placement



wall mounted
 HVAC system

exterior
 stub

TRENCH

