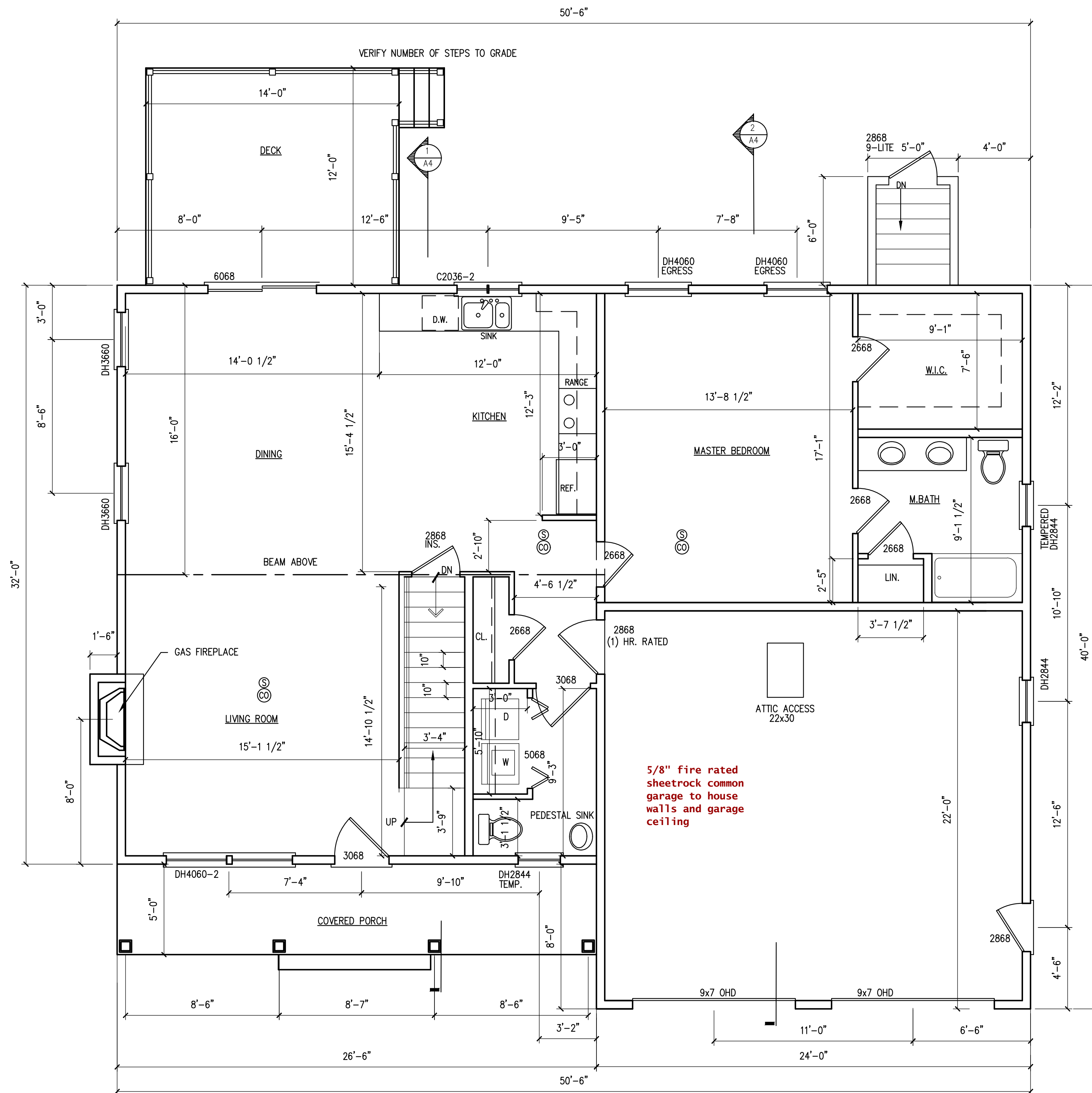
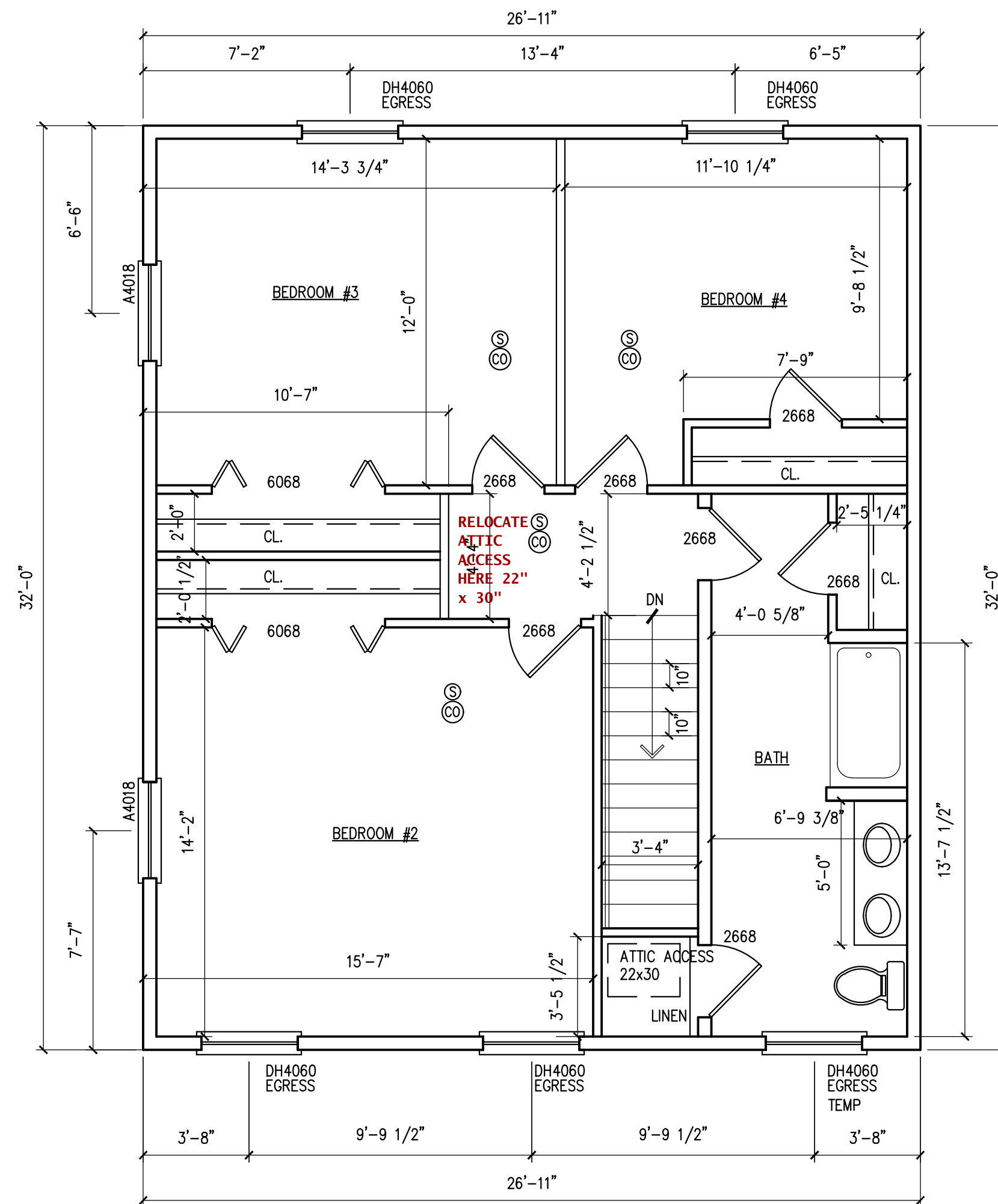


NFPA #13D wet pipe sprinkler system to be permitted and installed by Dean and Allyn, Inc.



FIRST FLOOR

HOUSE: 1,234 S.F.
GARAGE: 494 S.F. 1/4" = 1'-0"



SECOND FLOOR

HOUSE: 861 S.F. 1/4" = 1'-0"

COLONIAL DESIGN

PORTLAND, MAINE

FLOOR PLANS

REVISIONS

DLP
DLP
08-25-17

DRAWN BY:
CHECKED BY:
DATE:
ISSUED:

A1

SCALE: AS NOTED