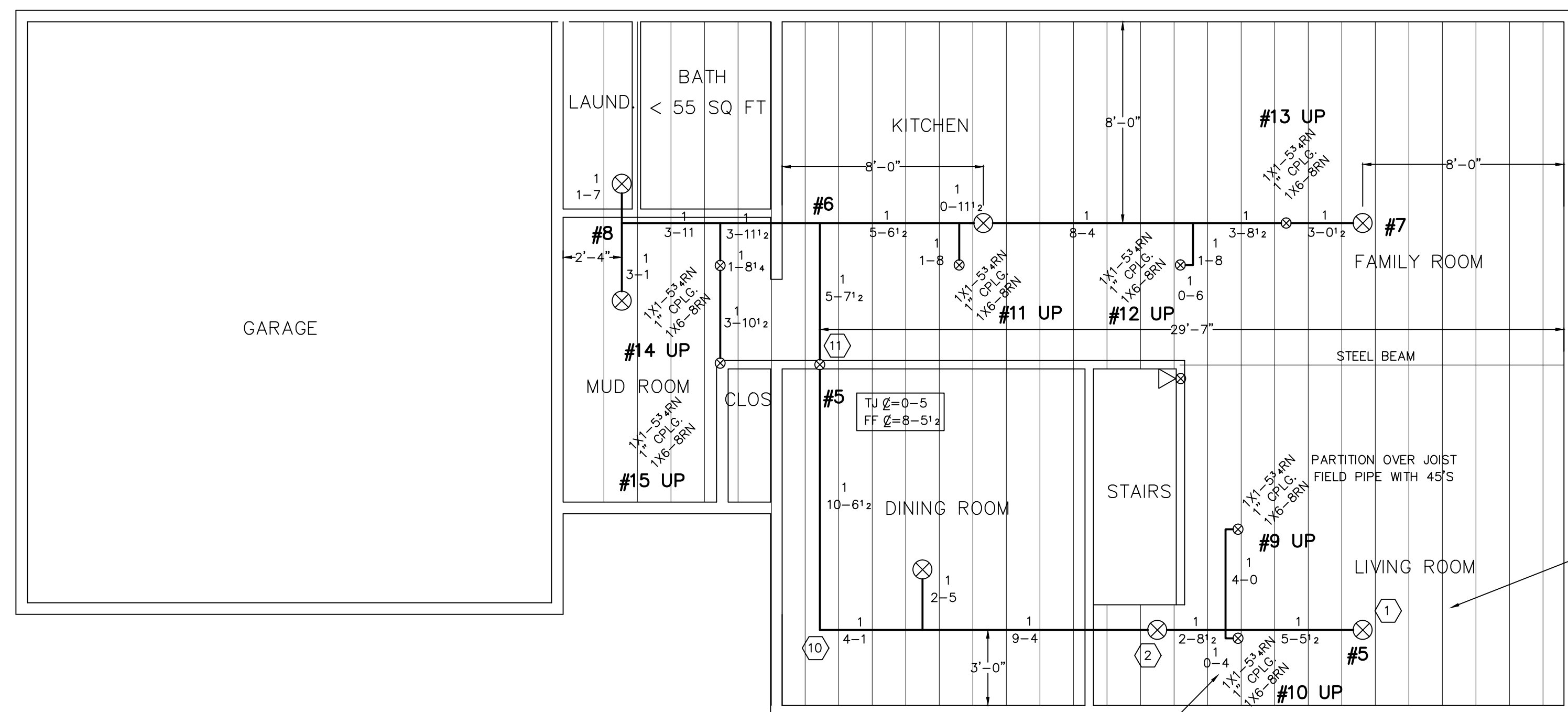
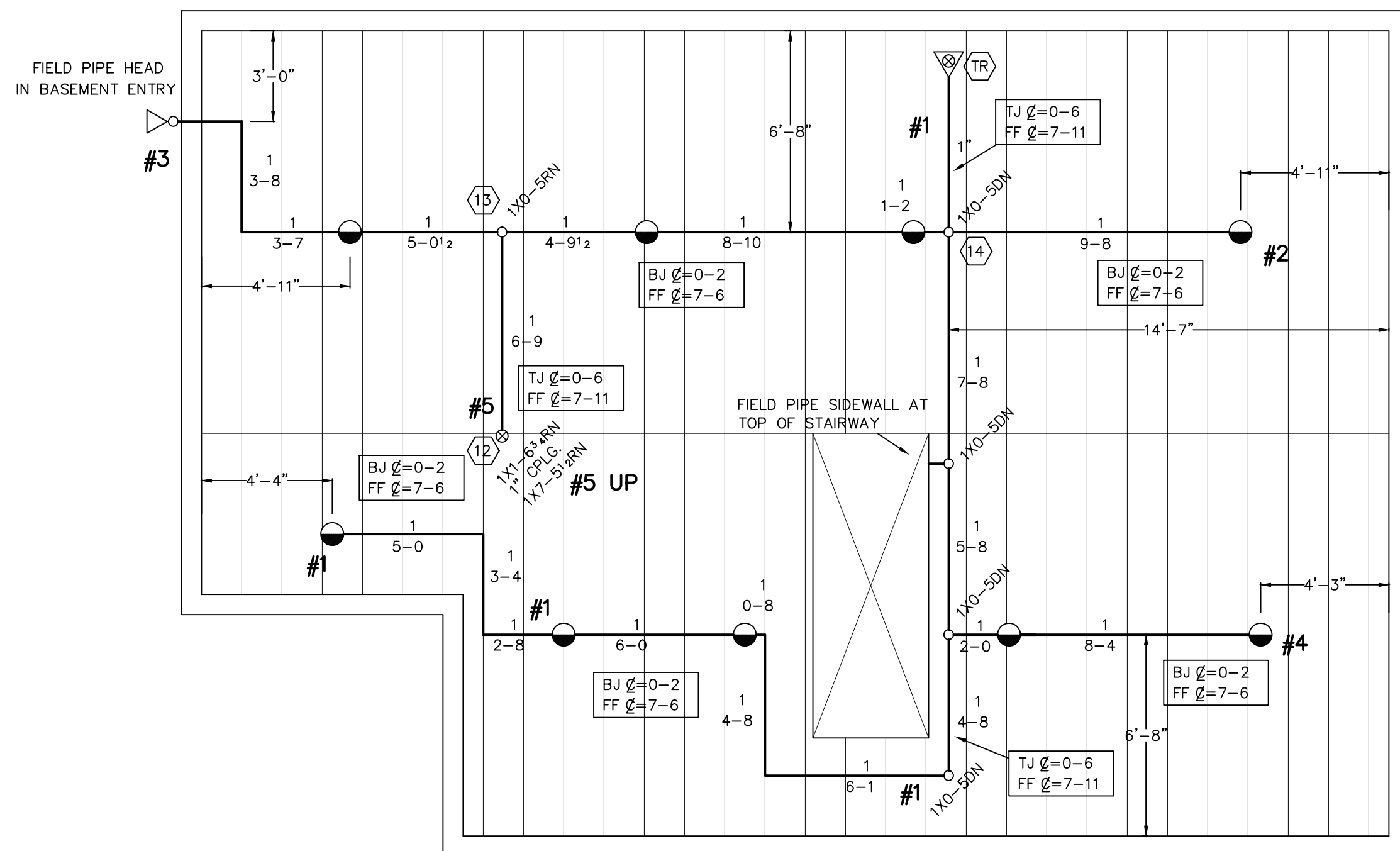


SECOND FLOOR

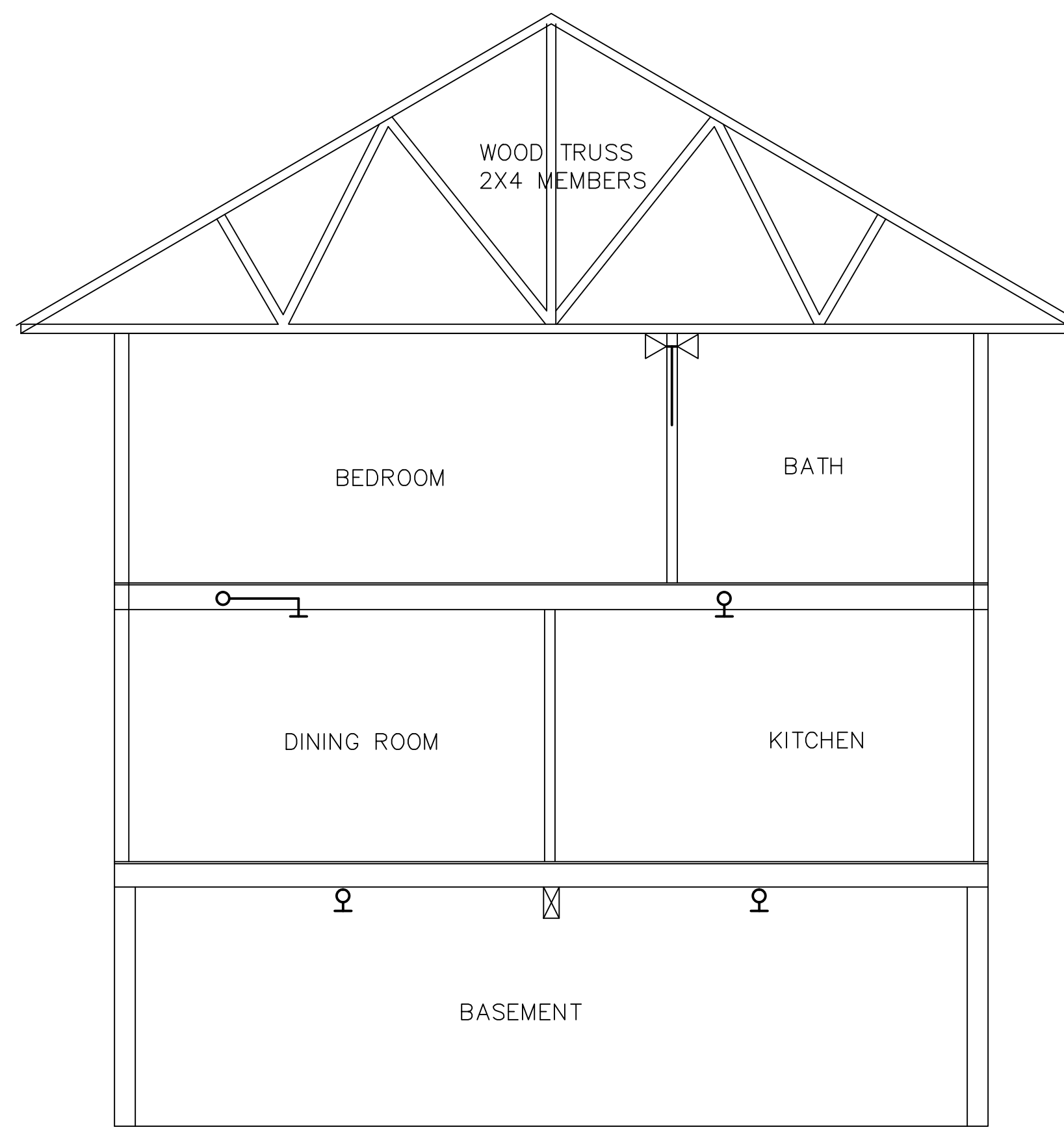


FIRST FLOOR

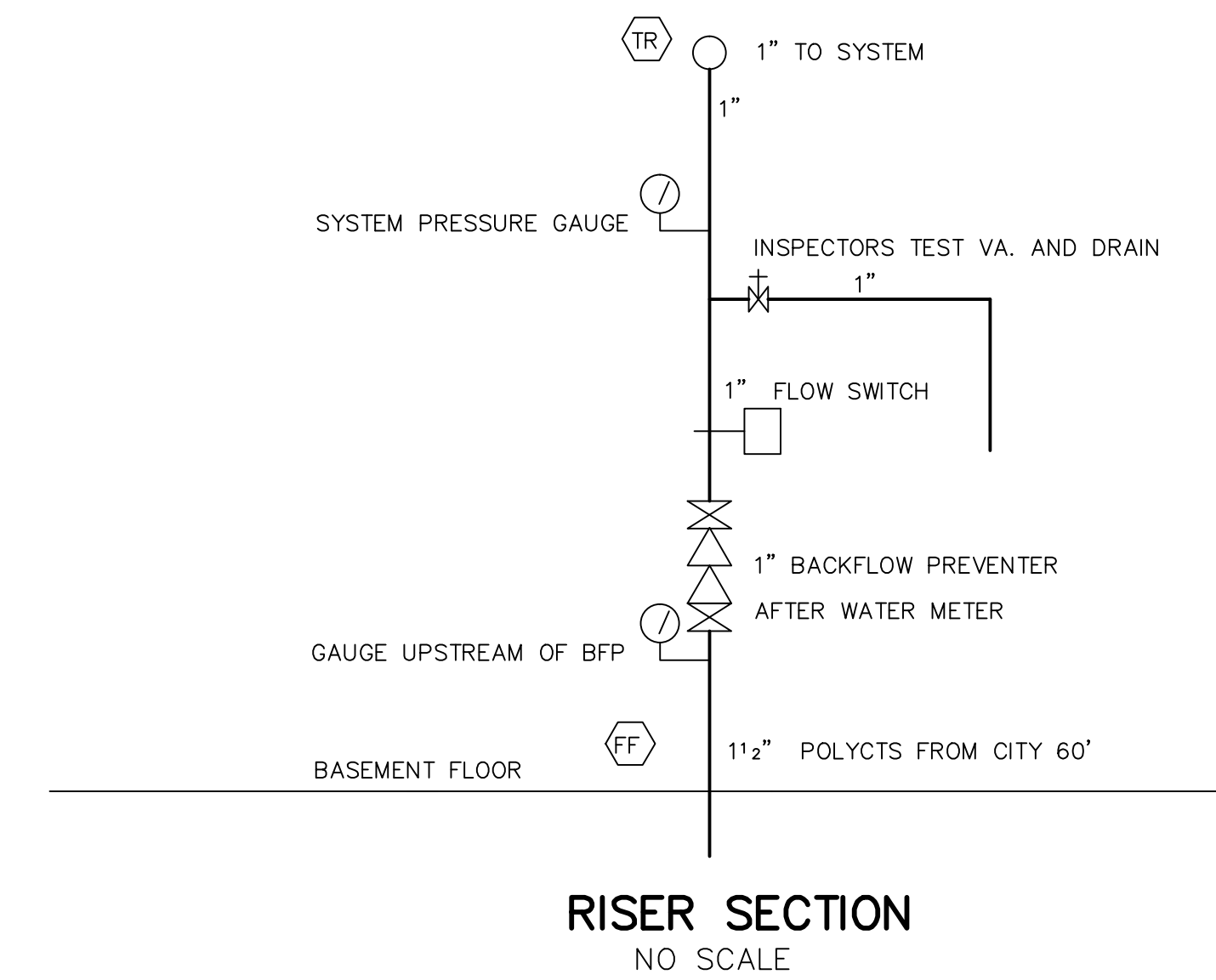


BASEMENT

CALC: 30 PAMELA DRIVE .WXP  
 HYDRAULIC DATA:  
 BASIS OF DESIGN:  
 DENSITY 0.05 AREA OF COVERAGE 2 SPRINKLERS  
 TOTAL OFFICE TEMP 7/16" 155'  
 SPRINKLERS 2 7/16" 155'  
 SYSTEM DEMAND AT CITY:  
 PRESSURE 45.4 FLOW HOSE 26.3  
 SAFETY MARGIN 14.1 PSI  
 OCCUPANCY: RESIDENCE



BUILDING SECTION



RISER SECTION  
NO SCALE

GENERAL NOTES

ALL DIMENSIONS ARE CENTER TO CENTER U/N  
 ALL 2" AND SMALLER PIPE TO SCH 40 BLACK STEEL  
 ALL SCREWED FITTINGS TO BE STD. WT. C.I. BLACK U/N  
 ALL HANGER SPACING AND SIZES TO CONFORM TO NFPA #13.  
 SUFFICIENT HEAT TO PREVENT FREEZING OF THE WET PIPE SPRINKLER SYSTEM  
 AND REQUIRED INSULATION METHODS PER NFPA STANDARDS  
 ARE REQUIRED TO BE FURNISHED BY THE BUYER/OWNER.

LEGEND

- ▷ 12-155" RELIABLE F1RES44 WHITE RES HOR SIDEWALL SPRINKLER LIVING SPACE
- ⊗ 7-165" RELIABLE RFC43 RES. WHITE CONCEALED PENDENT LIVING SPACE
- 9-155" RELIABLE F1FR Q R BRASS PENDENT BASEMENT
- FF Q=XX FIN FLR TO CENTERLINE OF PIPE
- BJ Q=XX BOTTOM OF JOISTS TO CENTERLINE OF PIPE
- TJ Q=XX TOP OF JOISTS TO CENTERLINE OF PIPE
- C Q=XX CEILING TO CENTERLINE OF PIPE
- RISE OR DROP NIPPLE
- ⊗ RISER BETWEEN FLOORS

- ⊗ 7  
155" RELIABLE RFC43  
RESIDENTIAL WHITE PENDENT CONCEALED LIVING SPACE  
1/2"x7/16" K=4.3
- 9  
155" RELIABLE F1FR  
OR BRASS PENDENT BASEMENT  
1/2"x1/2" K=5.6
- ▷ 12  
155" RELIABLE F1RES44  
RES. WHITE SIDEWALL LIVING SPACE  
1/2"x7/16" K=4.4

SYSTEM CLASSIFICATION

A WET PIPE NFPA #13D  
 SPRINKLER SYSTEM TO BE INSTALLED IN ALL  
 AREAS OF THE RESIDENCE TO MEET NFPA,  
 STATE, AND CITY OF PORTLAND CODES.

**DEAN & ALLYN, INC.**  
 FIRE PROTECTION • SPECIAL HAZARD  
 PO BOX 709, GRAY, MAINE 04039  
 (207)657-5646 FAX:(207)657-5647

REVISIONS	DATE	APPROVED BY	TITLE	NO. OF SPRINKLERS SHOWN ON THIS SHEET
///	///	///	9-7-16	28
///	///	///	9-7-16	28
///	///	///	xxxxx	28
///	///	///	AT DEAN & ALLYN, INC	28
///	///	///	SCALE 1/4"=1'-0"	28
///	///	///	SHEET NO. 1 OF 1	28

30 PAMELA ROAD  
 PORTLAND MAINE

NO. OF SPRINKLERS SHOWN ON THIS SHEET 28  
 NO. OF SPRINKLERS ON JOB 28  
 CONTRACT NO. C161370