

BP# 2016-02704_4

Katherine Caprio

what is the interior height of the pitch from the top of the ceiling joists? **- 8'**

What is the spacing? **6" OC**

What is the spacing? **16" OC**

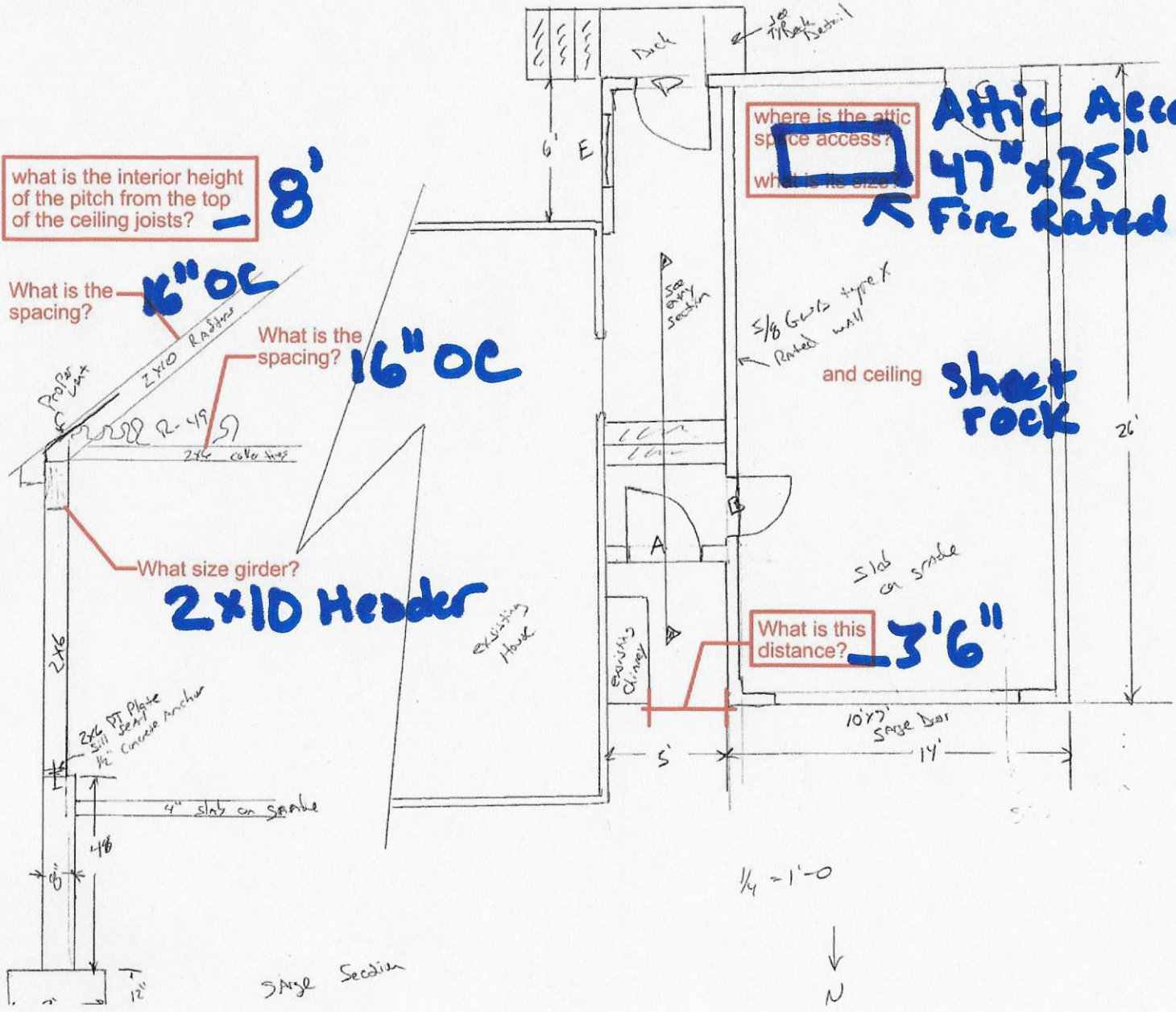
What size girder? **2x10 Header**

where is the attic space access?
what is its size?

Attic Access
47" x 25"
Fire Rated

and ceiling **Sheet Rock**

What is this distance? **- 3'6"**



Slab Section

1/4" = 1'-0"

↓
N