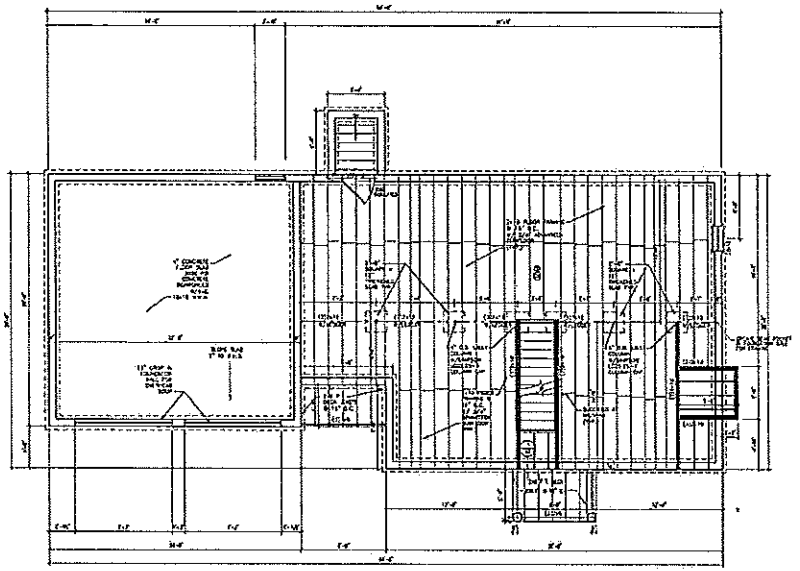
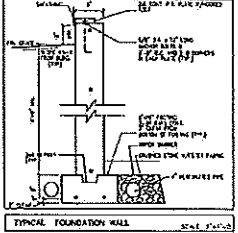
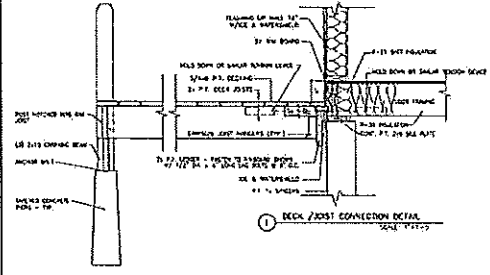


GENERAL NOTES

1. All work shall be in accordance with the RC 2024 ACI Code, ACI 308R-10, ACI 309R-10, ACI 310R-10, ACI 311R-10, ACI 312R-10, ACI 313R-10, ACI 314R-10, ACI 315R-10, ACI 316R-10, ACI 317R-10, ACI 318R-10, ACI 319R-10, ACI 320R-10, ACI 321R-10, ACI 322R-10, ACI 323R-10, ACI 324R-10, ACI 325R-10, ACI 326R-10, ACI 327R-10, ACI 328R-10, ACI 329R-10, ACI 330R-10, ACI 331R-10, ACI 332R-10, ACI 333R-10, ACI 334R-10, ACI 335R-10, ACI 336R-10, ACI 337R-10, ACI 338R-10, ACI 339R-10, ACI 340R-10, ACI 341R-10, ACI 342R-10, ACI 343R-10, ACI 344R-10, ACI 345R-10, ACI 346R-10, ACI 347R-10, ACI 348R-10, ACI 349R-10, ACI 350R-10, ACI 351R-10, ACI 352R-10, ACI 353R-10, ACI 354R-10, ACI 355R-10, ACI 356R-10, ACI 357R-10, ACI 358R-10, ACI 359R-10, ACI 360R-10, ACI 361R-10, ACI 362R-10, ACI 363R-10, ACI 364R-10, ACI 365R-10, ACI 366R-10, ACI 367R-10, ACI 368R-10, ACI 369R-10, ACI 370R-10, ACI 371R-10, ACI 372R-10, ACI 373R-10, ACI 374R-10, ACI 375R-10, ACI 376R-10, ACI 377R-10, ACI 378R-10, ACI 379R-10, ACI 380R-10, ACI 381R-10, ACI 382R-10, ACI 383R-10, ACI 384R-10, ACI 385R-10, ACI 386R-10, ACI 387R-10, ACI 388R-10, ACI 389R-10, ACI 390R-10, ACI 391R-10, ACI 392R-10, ACI 393R-10, ACI 394R-10, ACI 395R-10, ACI 396R-10, ACI 397R-10, ACI 398R-10, ACI 399R-10, ACI 400R-10.
2. All materials shall be of the highest quality and shall be tested and approved by the Engineer before use.
3. All work shall be done in accordance with the approved plans and specifications.
4. All work shall be done in accordance with the approved plans and specifications.
5. All work shall be done in accordance with the approved plans and specifications.
6. All work shall be done in accordance with the approved plans and specifications.
7. All work shall be done in accordance with the approved plans and specifications.
8. All work shall be done in accordance with the approved plans and specifications.
9. All work shall be done in accordance with the approved plans and specifications.
10. All work shall be done in accordance with the approved plans and specifications.

MEMBER SCHEDULE	
MEMBER	SECTION
1. 12" x 12" COL	12 - 24
2. 12" x 12" COL	12 - 24
3. 12" x 12" COL	12 - 24
4. 12" x 12" COL	12 - 24
5. 12" x 12" COL	12 - 24
6. 12" x 12" COL	12 - 24
7. 12" x 12" COL	12 - 24
8. 12" x 12" COL	12 - 24
9. 12" x 12" COL	12 - 24
10. 12" x 12" COL	12 - 24

NOTE: ALL WORK SHALL BE DONE IN ACCORDANCE WITH THE APPROVED PLANS AND SPECIFICATIONS. ALL WORK SHALL BE DONE IN ACCORDANCE WITH THE APPROVED PLANS AND SPECIFICATIONS. ALL WORK SHALL BE DONE IN ACCORDANCE WITH THE APPROVED PLANS AND SPECIFICATIONS.



LEGRO
 48 PAMELA ROAD
 PORTLAND, MAINE

DRAWING: 315 SHEET
 FOUNDATION / FRAMING PLAN
 DETAILS

07/28/12 **A0**