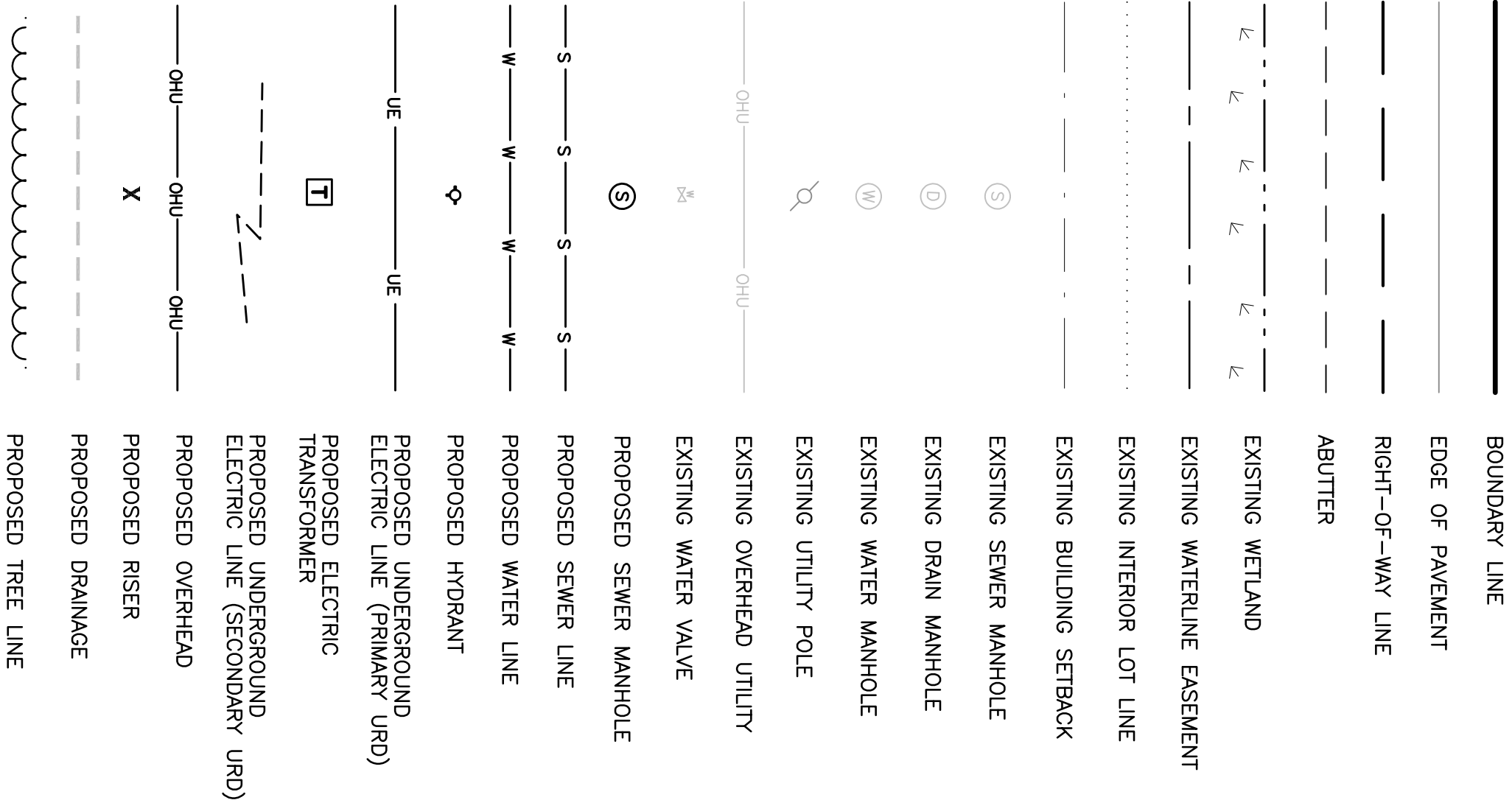


LEGEND



STRIPING KEY:

SSW = SINGLE SOLID WHITE REFLECTIVE PAVEMENT MARKING

NOTES

1. WETLAND IMPACTS:  
AREA "A" = 3,575 SF  
AREA "B" = 1,822 SF  
TOTAL = 5,397 SF
2. THE SPECIES OF STREET TREES SHALL BE SELECTED FROM THE CITY OF PORTLAND RECOMMENDED STREET TREE LIST (2014). TREES SELECTED FOR PLANTING SHALL VARY MORE THAN ONE SPECIES SHALL BE PLANTED ALONG PAMELA ROAD.

THIS PLAN IS FOR REVIEW  
PURPOSES ONLY AND IS NOT  
INTENDED FOR CONSTRUCTION  
OR RECORDING

Revised: 11/10/14

Revised: 11/10/14

Revised: 11/10/14

Revised: 11/10/14

Revised: 11/10/14

Revised: 11/10/14

Revised: 11/10/14

Revised: 11/10/14

Revised: 11/10/14

Revised: 11/10/14

Revised: 11/10/14

Revised: 11/10/14

Revised: 11/10/14

Revised: 11/10/14

Revised: 11/10/14

Revised: 11/10/14

Revised: 11/10/14

Revised: 11/10/14

Revised: 11/10/14

Revised: 11/10/14

Revised: 11/10/14

Revised: 11/10/14

Revised: 11/10/14

Revised: 11/10/14

Revised: 11/10/14

Revised: 11/10/14

Revised: 11/10/14

Revised: 11/10/14

Revised: 11/10/14

Revised: 11/10/14

Revised: 11/10/14

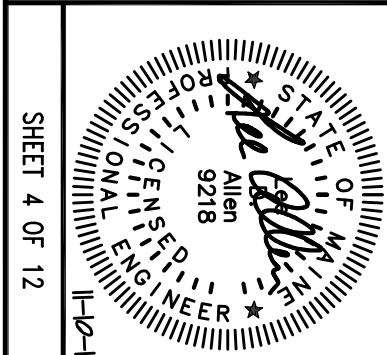
Revised: 11/10/14

Revised: 11/10/14

Revised: 11/10/14

Revised: 11/10/14

Revised: 11/10/14



SHEET 4 OF 12

**NCS**  
Northeast Civil Solutions  
SURVEYING ENGINEERING LAND PLANNING  
INCORPORATED  
153 US ROUTE 1, SCARBOROUGH, MAINE 04074  
tel 207.883.1000 fax 207.883.1001 e-mail info@northeastcivilsolutions.com  
207.883.1221