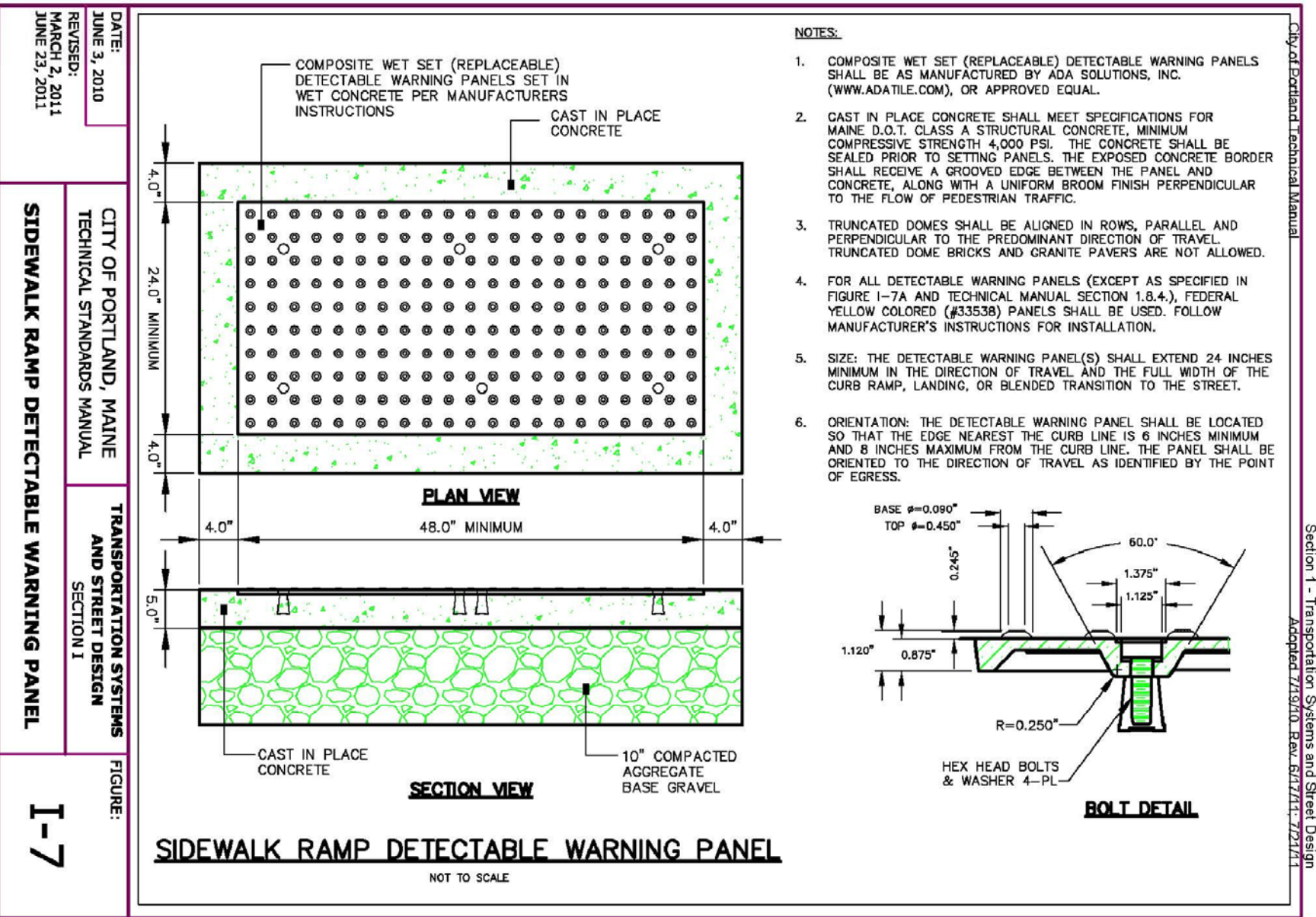
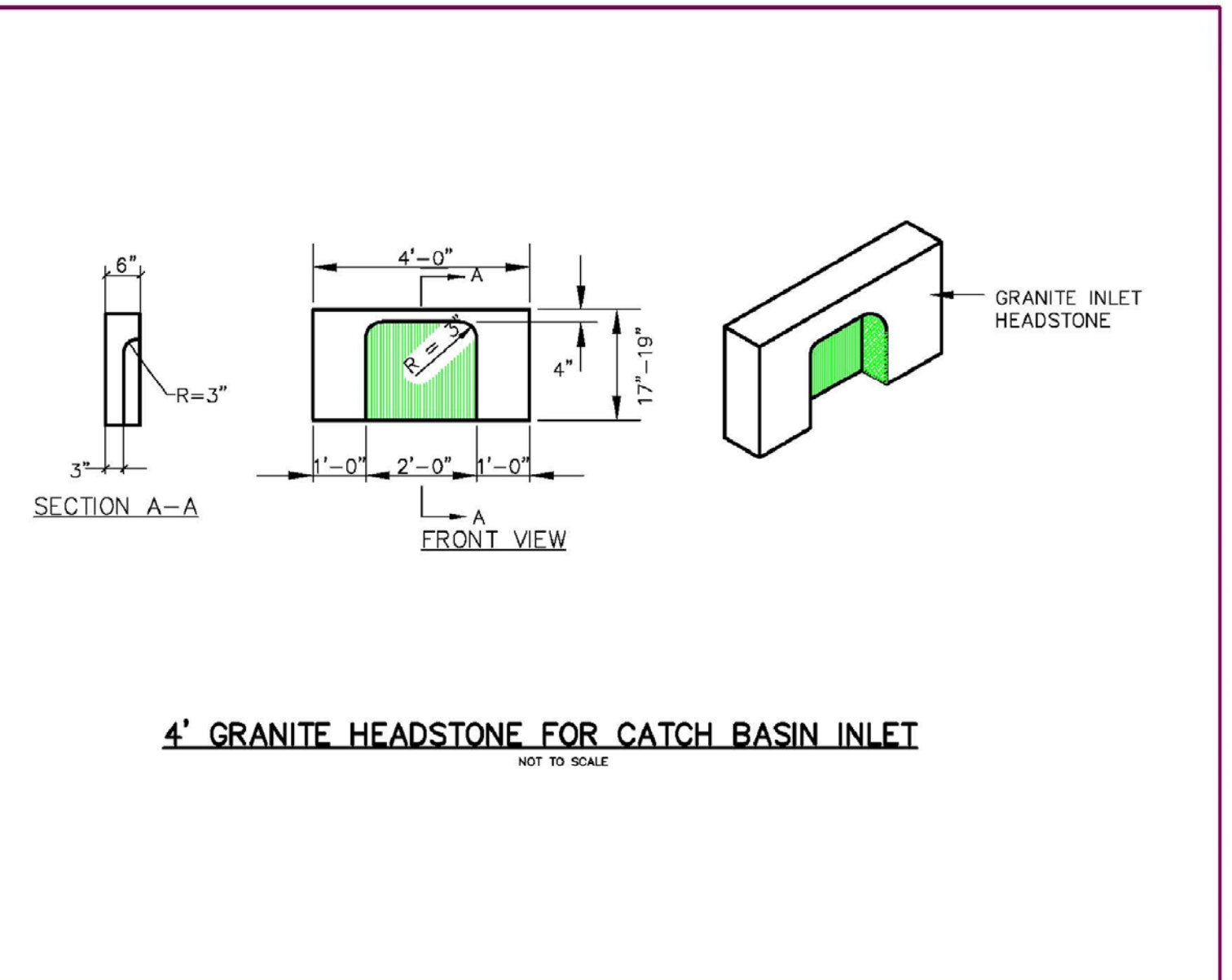


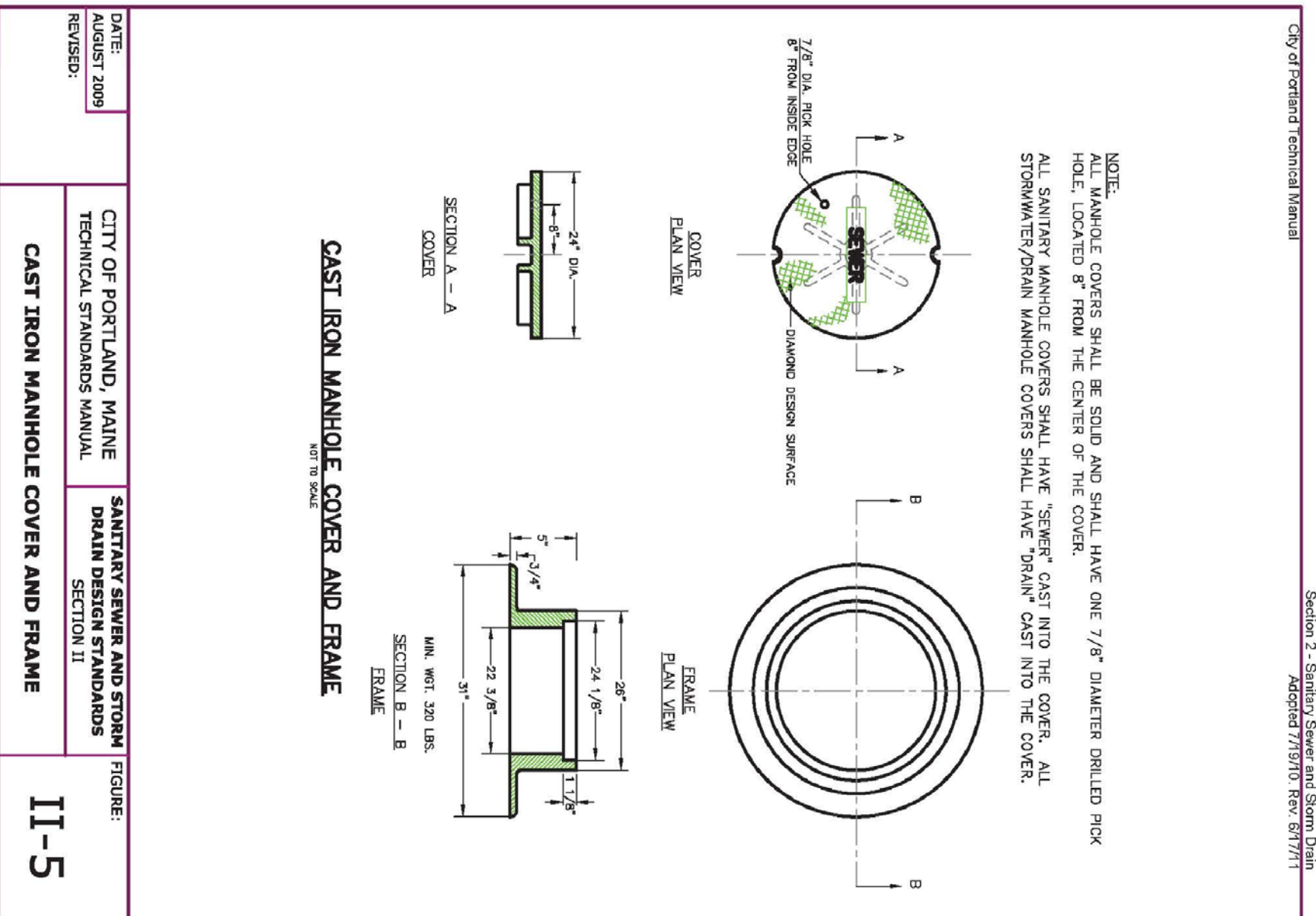
DATE: AUGUST 2009
 CITY OF PORTLAND, MAINE
 TECHNICAL STANDARDS MANUAL
 TRANSPORTATION SYSTEMS AND STREET DESIGN
 SECTION I
BITUMINOUS DRIVEWAY APRON
 FIGURE: I-13



DATE: JUNE 2, 2010
 REVISION: MARCH 2, 2011
 CITY OF PORTLAND, MAINE
 TRANSPORTATION SYSTEMS AND STREET DESIGN
 SECTION I
SIDEWALK RAMP DETECTABLE WARNING PANEL
 FIGURE: I-7



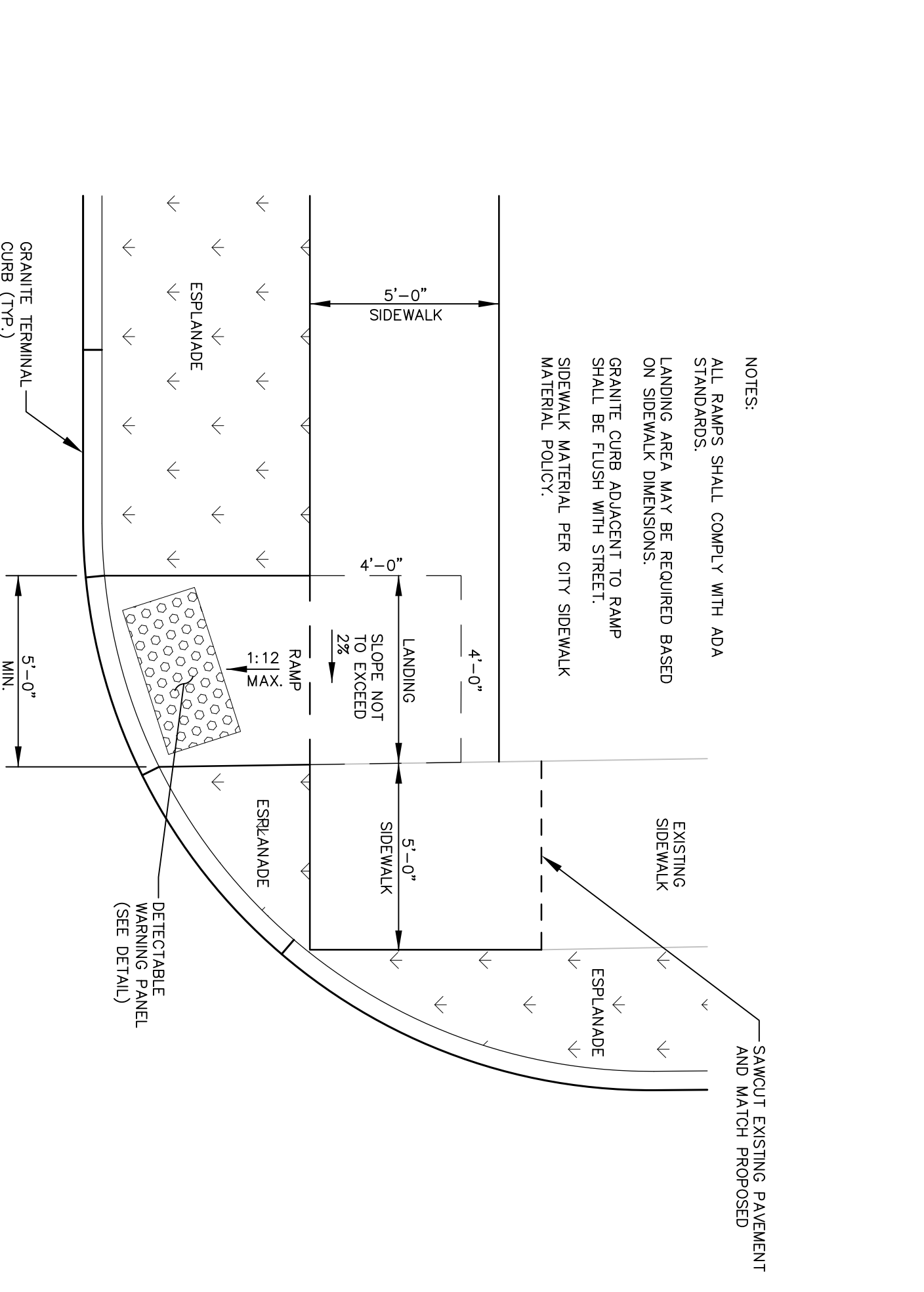
DATE: AUGUST 2009
 CITY OF PORTLAND, MAINE
 TECHNICAL STANDARDS MANUAL
 SANITARY SEWER AND STORM DRAIN DESIGN STANDARDS
 SECTION II
4' GRANITE HEADSTONE FOR CATCH BASIN INLET
 FIGURE: II-11



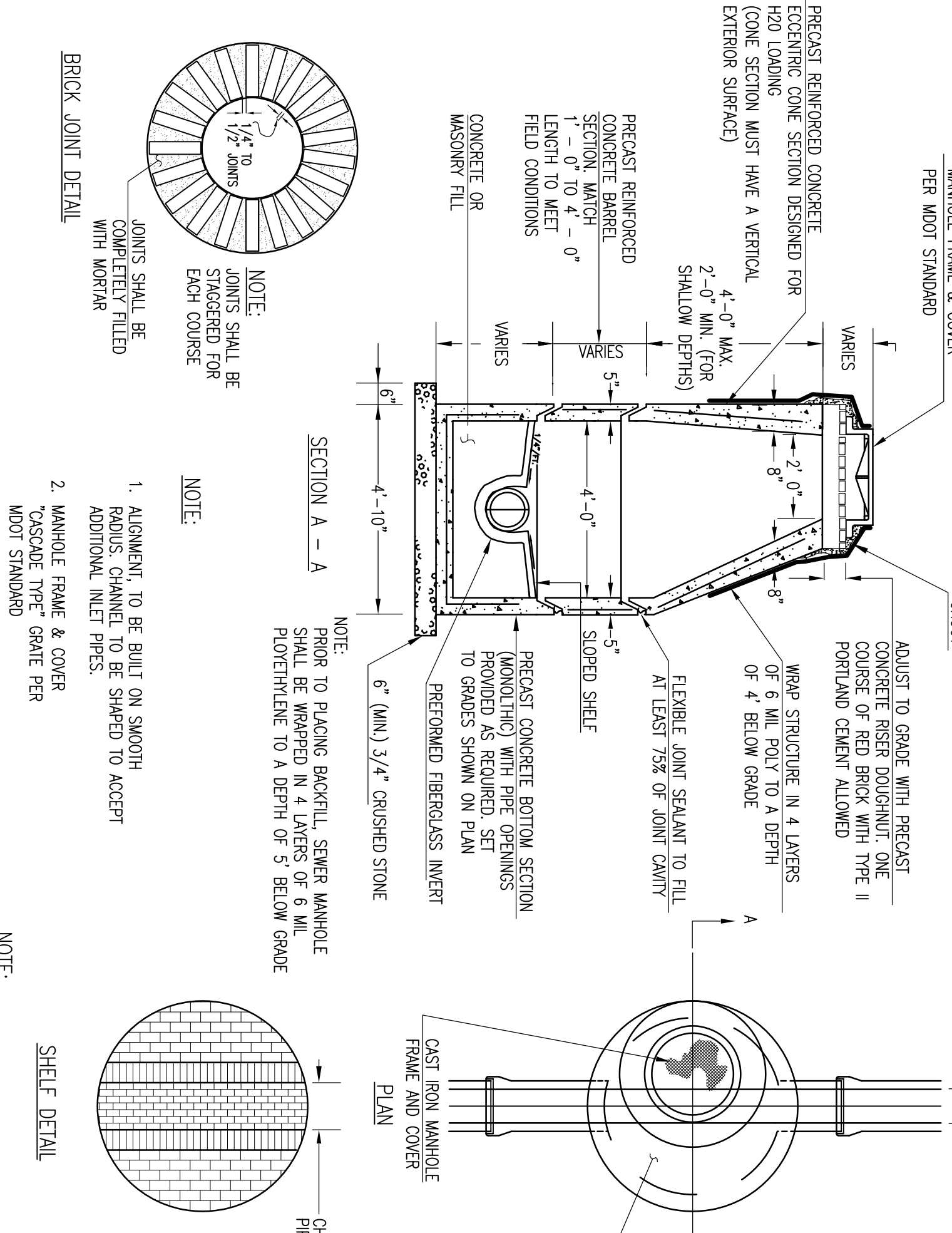
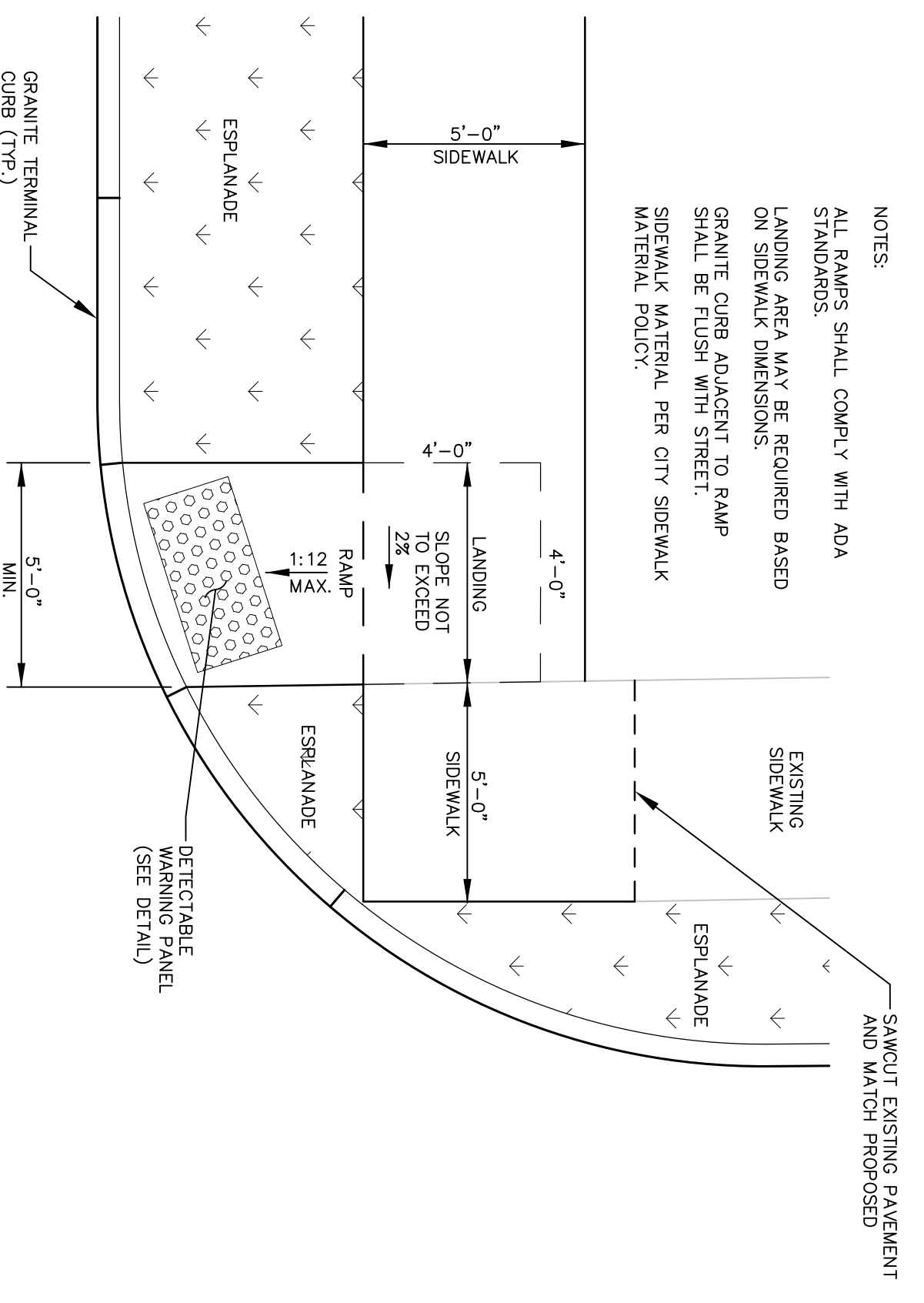
DATE: AUGUST 2009
 CITY OF PORTLAND, MAINE
 TECHNICAL STANDARDS MANUAL
 SANITARY SEWER AND STORM DRAIN DESIGN STANDARDS
 SECTION II
CAST IRON MANHOLE COVER AND FRAME
 FIGURE: II-5

CATCH BASIN/ DRAIN MANHOLE DIMENSIONAL REQUIREMENTS	WALL WIDTH	FLOOR THICKNESS
4'-0"	5"	6"
5'-0"	6"	6"
6'-0"	7"	6"
8'-0"	8"	8"
10'-0"	10"	9"

PRECAST CONCRETE SEWER MANHOLE TYPE "A"
 NOT TO SCALE



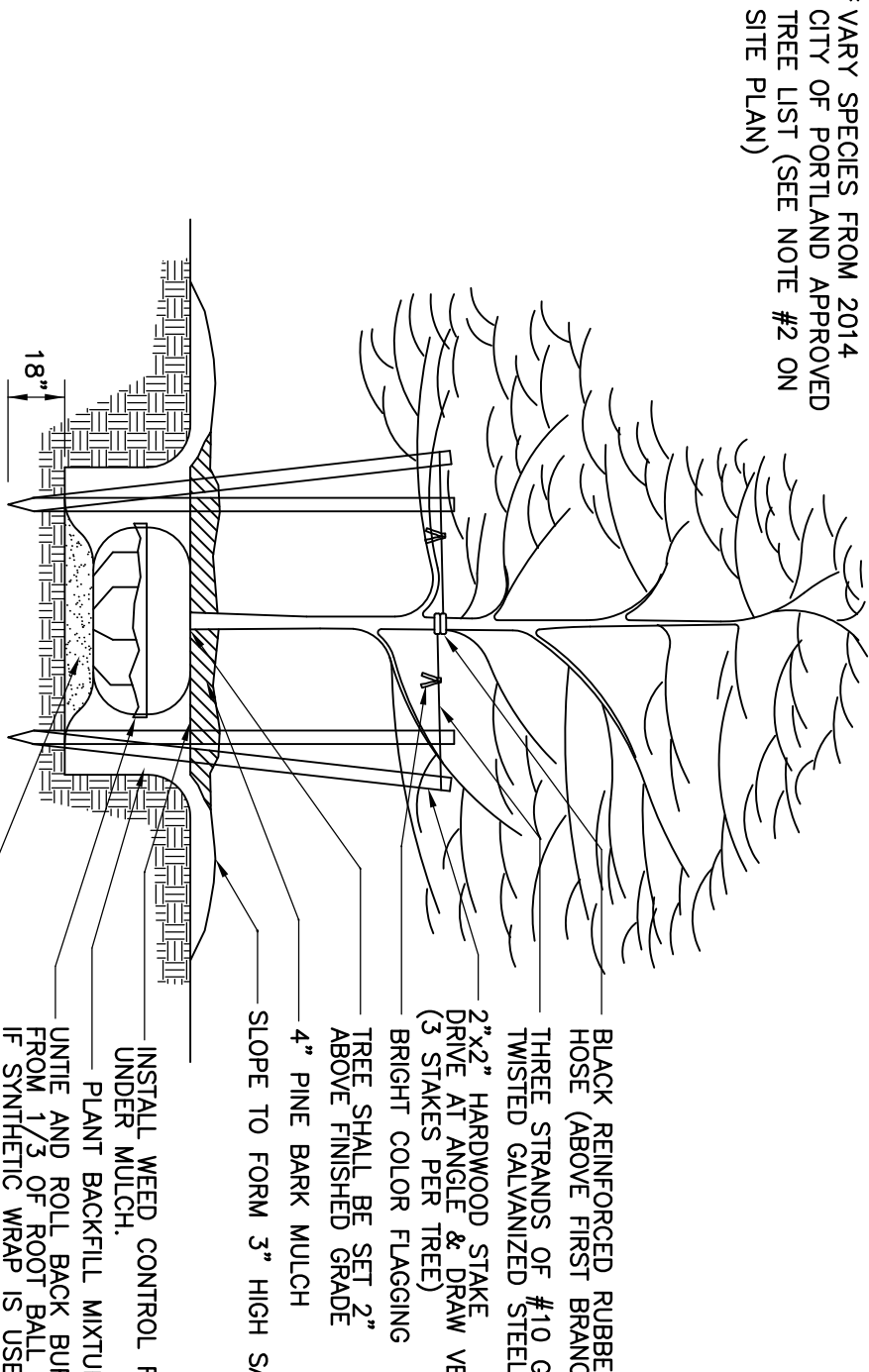
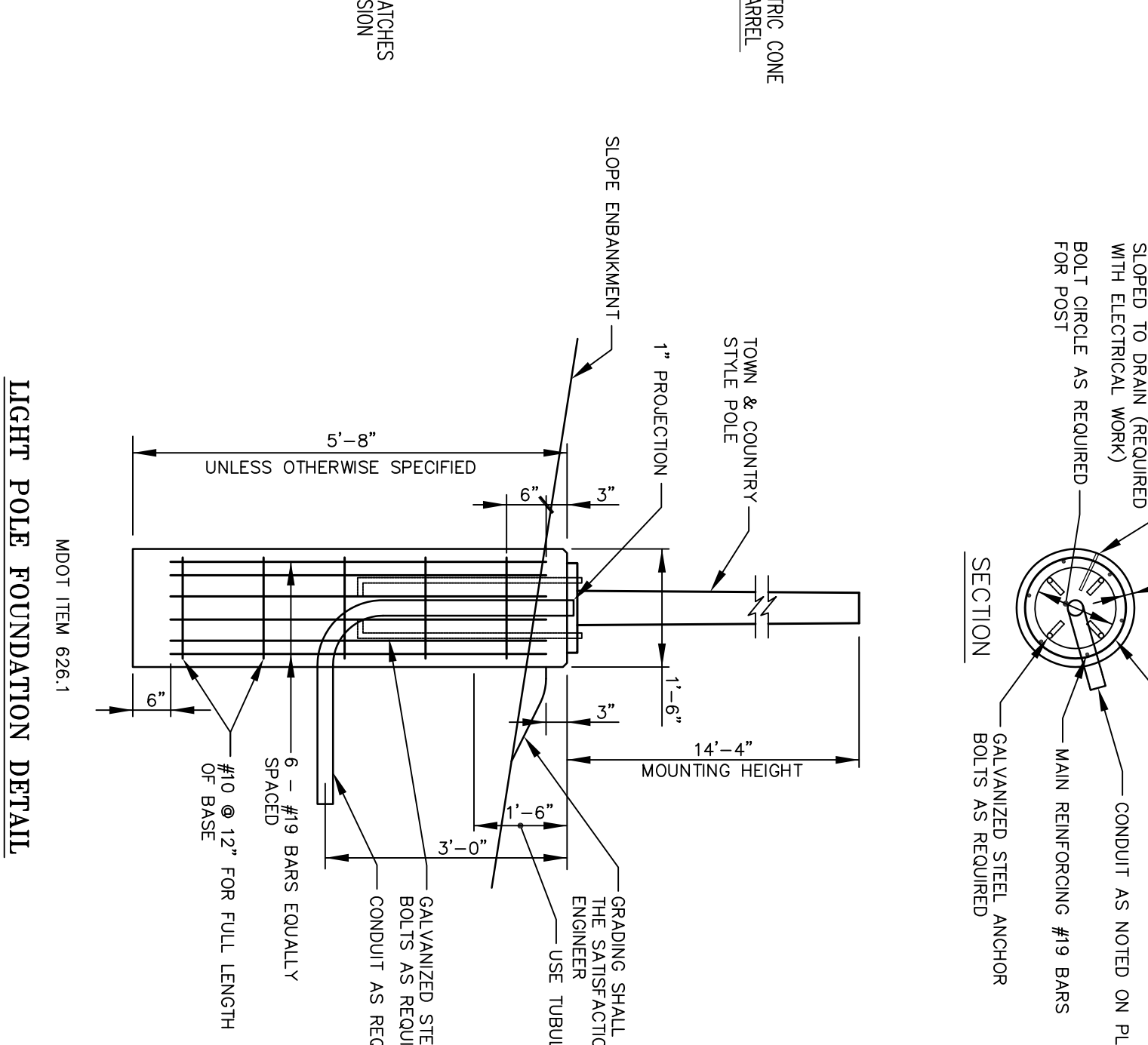
SIDEWALK LAYOUT DETAIL
 N.T.S.



PLANTING SCHEDULE

QUANTITY	BOTANICAL NAME	COMMON NAME	SIZE
20*	ACER RUBRUM	RED SUNSET*	6"-7"

* VARY SPECIES FROM 2014 CITY OF PORTLAND APPROVED TREE LIST (SEE NOTE #2 ON SITE PLAN)



CONSTRUCTION DETAILS - SHEET 2

Number	Revised	By	Date	Change
1	11/10/14	SIA	11/10/14	REVISED PER CITY COMMENTS
2	10/14/14	SIA	10/14/14	REVISED PER TOWN COMMENTS

PROJECT NUMBER: 33229.02
 ACAD FILE: 33229-DETAILS.DWG
 SCALE: N.T.S.
 DATE: AUGUST 4, 2014

THIS PLAN IS FOR REVIEW PURPOSES ONLY AND IS NOT INTENDED FOR CONSTRUCTION OR RECORDING

Project Name and Location:
PAMELA ROAD EXTENSION
 PAMELA ROAD, PORTLAND, MAINE 04101

Prepared For:
TELLOS CAPITAL, LLC
 2 MILK STREET, PORTLAND, MAINE 04101

Project Number and Location:
Northwest Civil Solutions
 INCORPORATED
 153 US ROUTE 1, SCARBOROUGH, MAINE 04074
 TEL: 207.883.1000 FAX: 207.883.1001
 800.882.2222 info@northwestcivilsolutions.com

