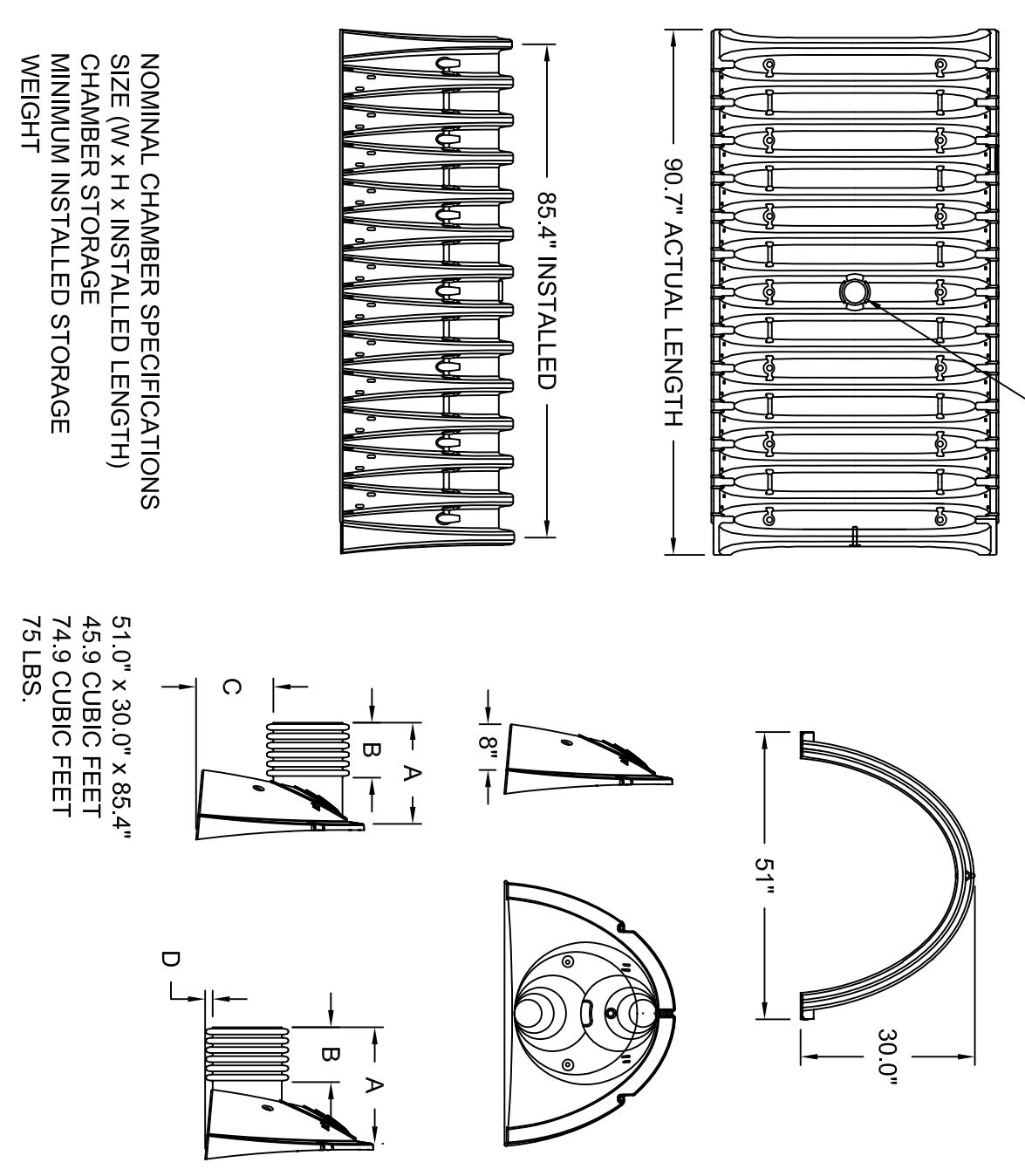
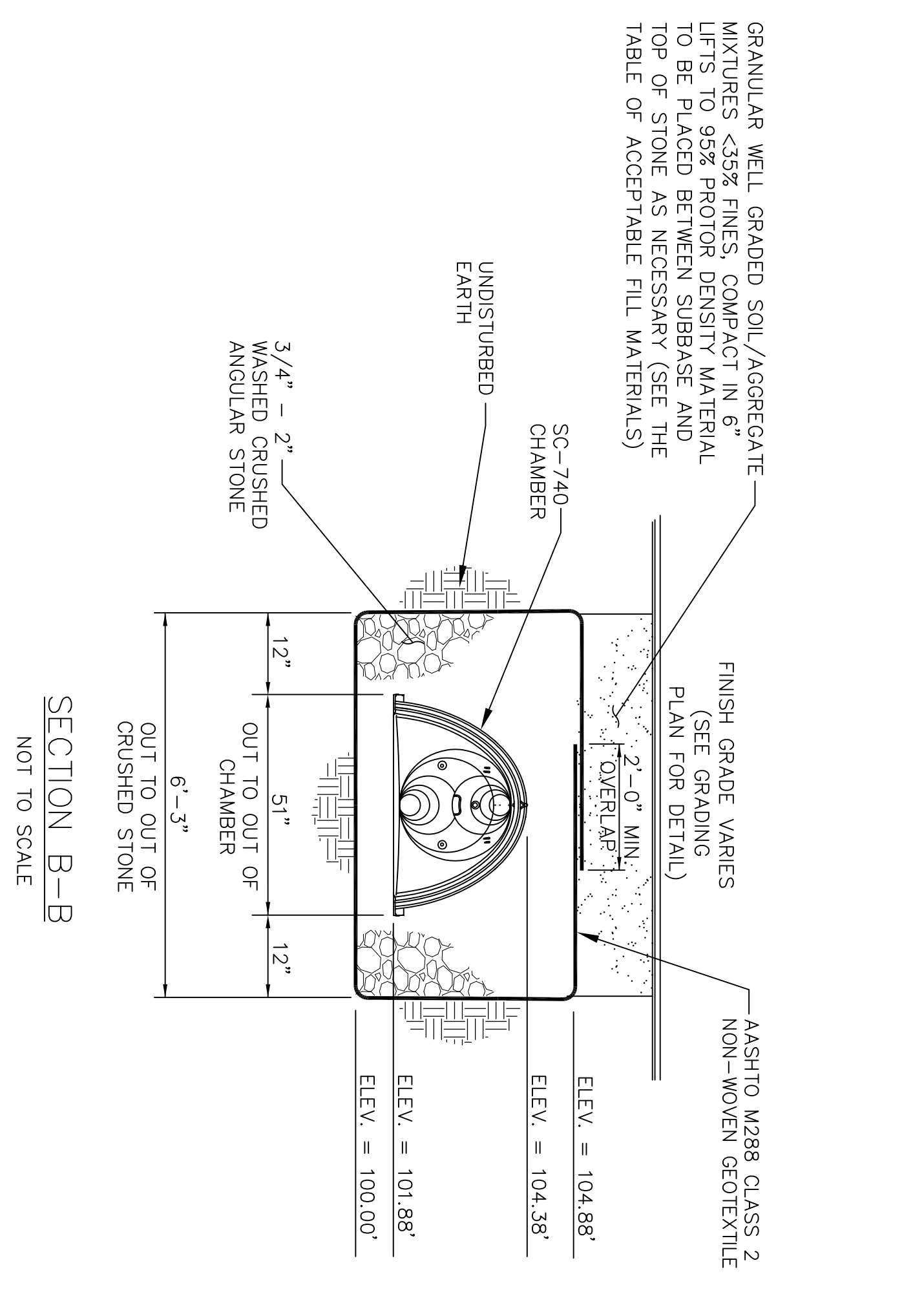
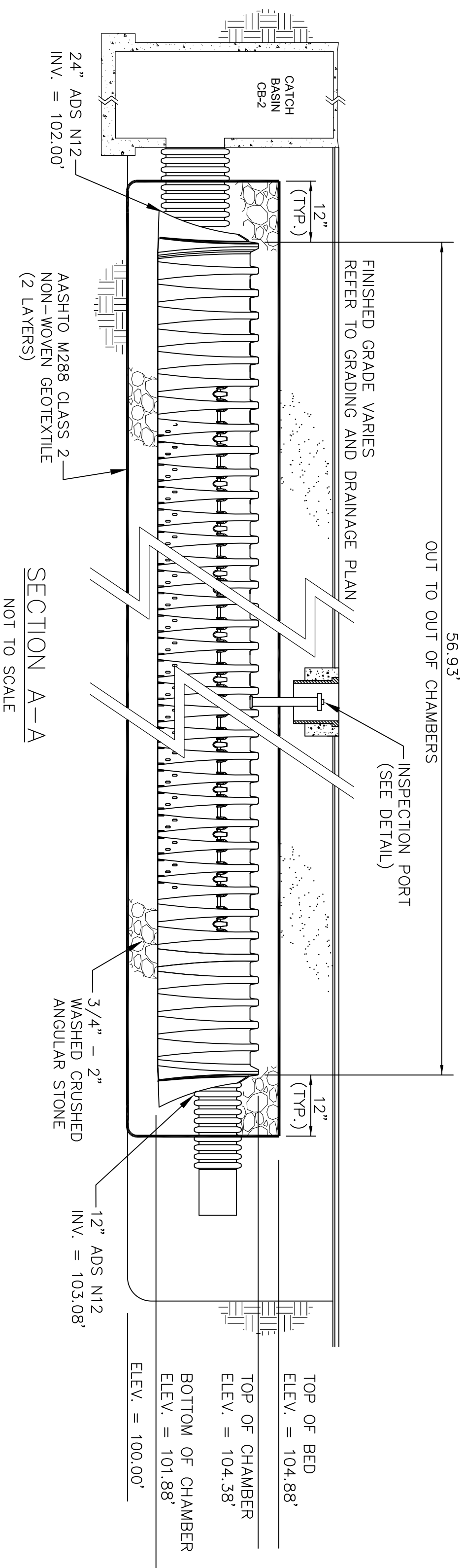
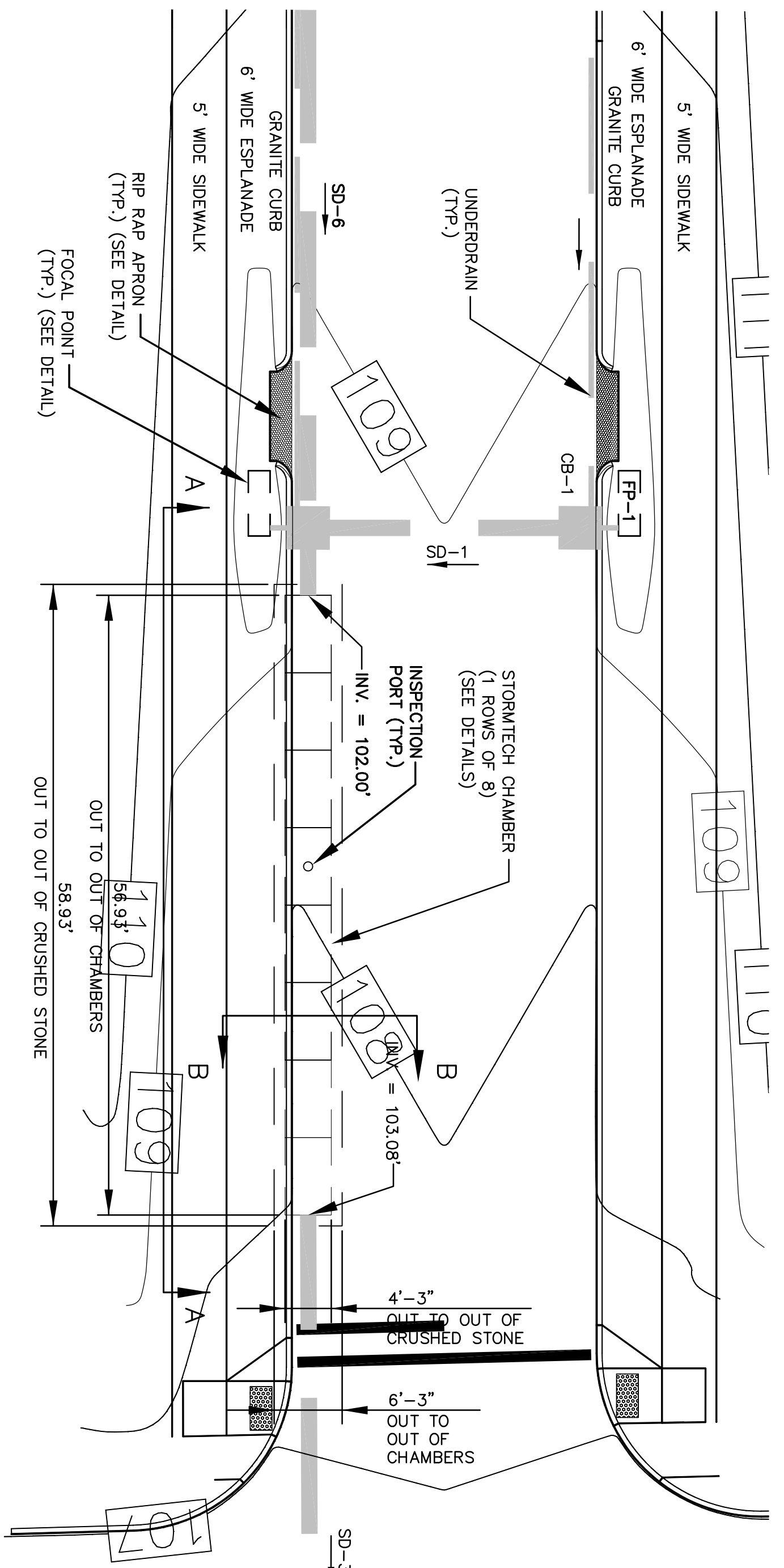


ACCEPTABLE FILL MATERIALS
STORMTECH SC-740 CHAMBER SYSTEMS

MATERIAL LOCATION	DESCRIPTION	ASTM MFG. DESIGNATION	ASTM MFG. DESIGNATION	COMPACTION/ DENSITY REQUIREMENT
FILL MATERIAL FROM 4" TO GRADE ABOVE CHAMBERS	ANY SOIL ROCK MATERIALS WITH TYPICAL STORMWATER TRENCH SECTION ON SHEET C-10	N/A	N/A	PREPARE PER ENGINEERS PLAN. RATED INSTALLATIONS MAY HAVE STRINGENT MATERIAL AND PREPARATION REQUIREMENTS.
FILL MATERIAL FOR 6" TO 18" ELEVATION ABOVE CHAMBERS (2" FOR UNPAVED INSTALLATIONS)	GRANULAR WELL-GRADED SOLID/AGGREGATE MIXTURES; C_{55} FINES.	3, 357, 4, 467, 5, 565, 57, 6, 67, 68, 7, 78, 9, 89, 9, 99	A-1, A-2, A-3	COMPACT IN 6" LIFTS TO A MINIMUM 95% STANDARD PROCTOR DENSITY. ROLLER GROSS WEIGHT NOT TO EXCEED 7,000 LBS. DYNAMIC FORCE NOT TO EXCEED 20,000 LBS. NO COMPACTION REQUIRED
EMBEDMENT STONE SURROUNDING 12" ABOVE 8" BELOW CHAMBERS	WASHED ANGULAR STONE WITH THE MAJORITY OF PARTICLES BETWEEN 1/2" - 3/4" INCH	3, 357, 4, 467, 5, 565, 57	N/A	PLATE COMPACT OR ROLL TO PROCTOR DENSITY
FOUNDATION BELOW CHAMBERS	SEE CROSS SECTION	N/A	N/A	
SUBSURFACE SOIL FILTER				

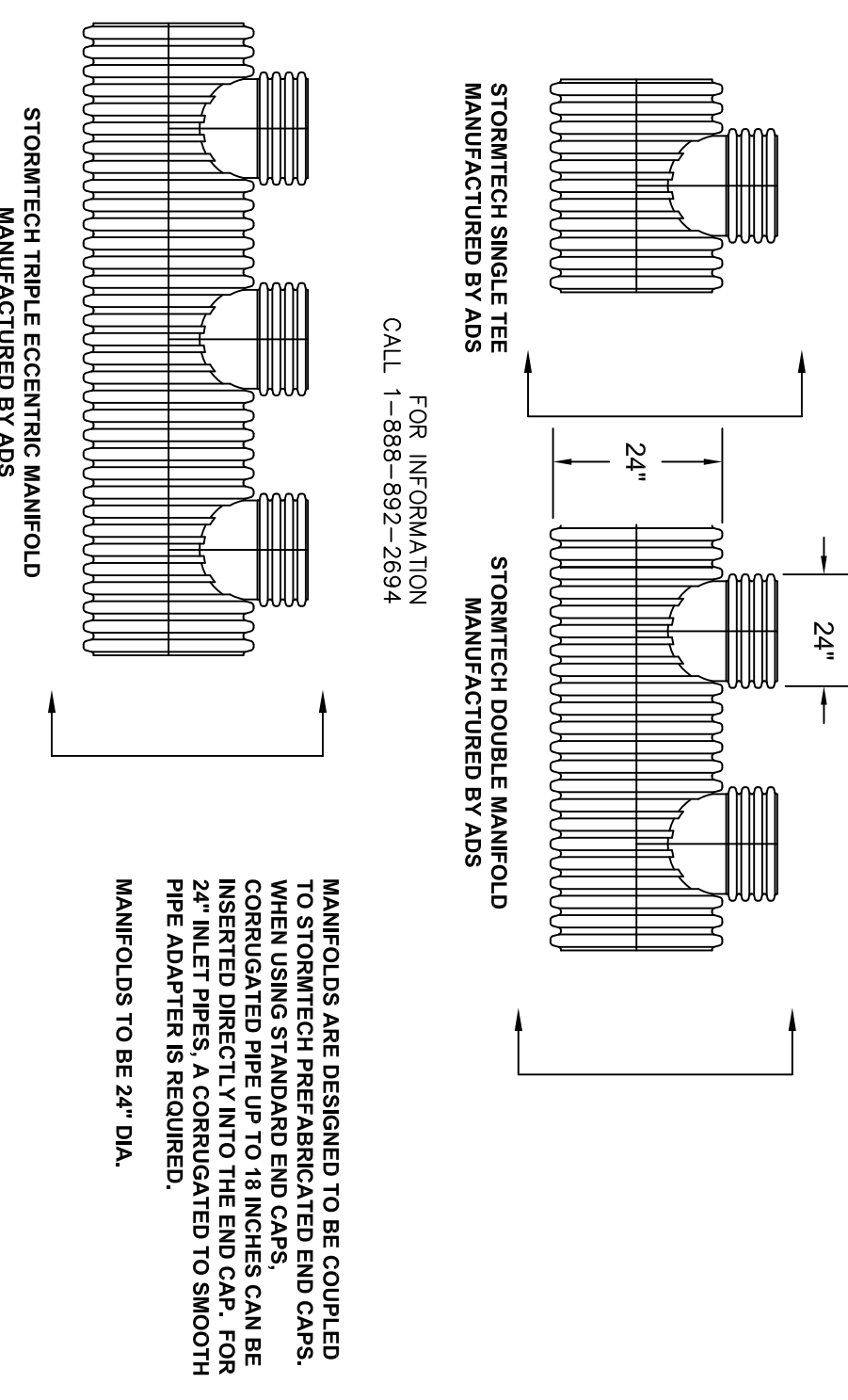
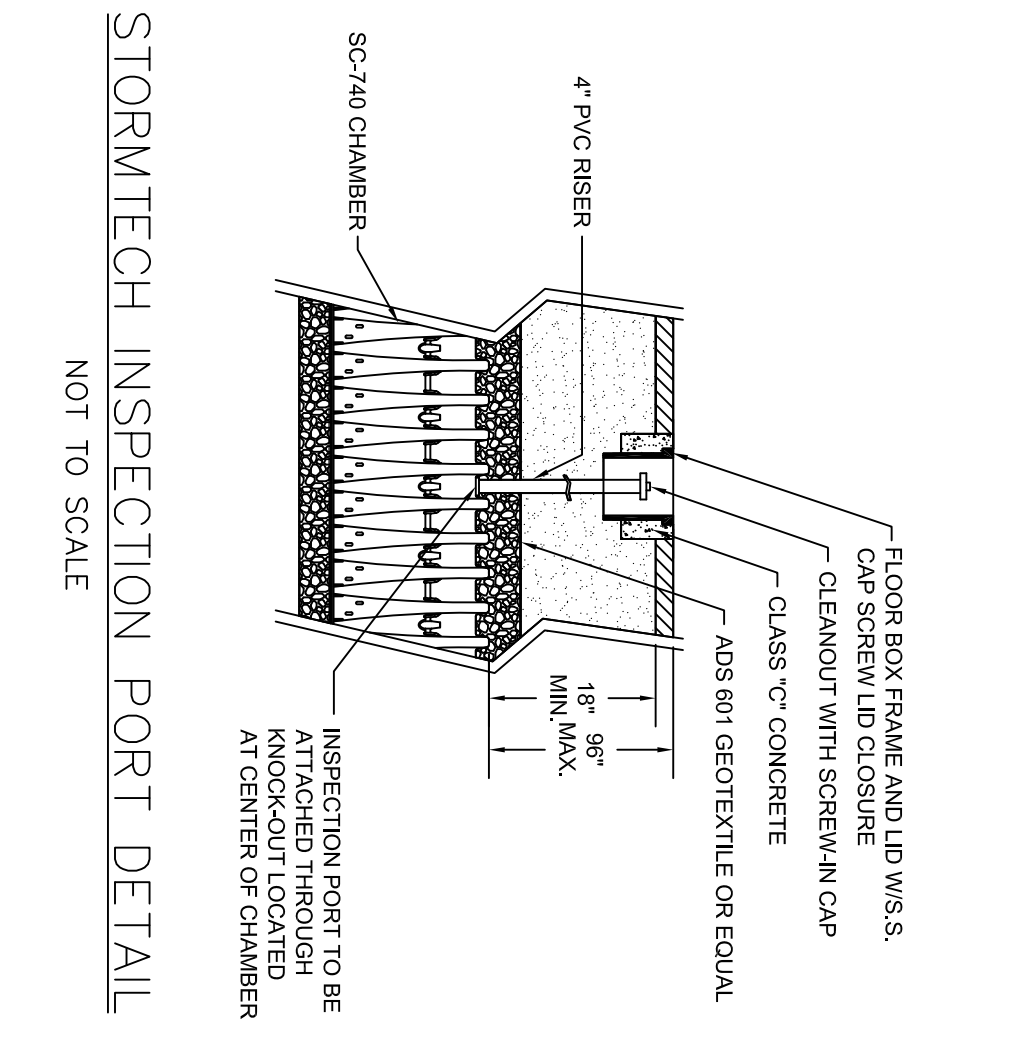
STORMTECH ACCEPTABLE FILL MATERIALS

- NOTES:
- MANHOLE FRAME AND GRATE SHALL BE DESIGNED TO WITHSTAND H-20 LOADING.
 - ACCESS LADDER WITH PRECAST DROP FRONT STEEL REINFORCED COPOLYMER RUNGS AT 12" O.C.
 - LEBARON STANDARD FRAME AND COVER SET IN TOP OF BRICK MASONRY AND SEALED WITH MORTAR. COVER TO BE SUPPLIED WITH "3" LETTERING TO READ "DRAIN".



PART #	CHAMBER	PIPE SIZE	A	B	C	D
SC740E12B	SC 740	12 in (300 mm)	14.70 in (373 mm)	7.70 in (196 mm)	N/A	1.20 in (30 mm)

SC-740 TECHNICAL DETAILS
NOT TO SCALE



- NOTES:
- ALL DESIGN SPECIFICATIONS FOR STORMTECH CHAMBERS SHALL BE IN ACCORDANCE WITH THE STORMTECH DESIGN MANUAL.
 - THE INSTALLATION OF STORMTECH CHAMBERS SHALL BE IN ACCORDANCE WITH THE LATEST STORMTECH INSTALLATION INSTRUCTIONS.
 - THE CONTRACTOR IS ADVISED TO REVIEW AND UNDERSTAND THE INSTALLATION INSTRUCTIONS PRIOR TO BEGINNING SYSTEM INSTALLATION. CALL 1-888-892-2694 OR VISIT WWW.STORMTECH.COM TO RECEIVE A COPY OF THE LATEST STORMTECH INSTALLATION INSTRUCTIONS.

THIS PLAN IS FOR REVIEW PURPOSES ONLY AND IS NOT INTENDED FOR CONSTRUCTION OR RECORDING

PROJECT NUMBER: 33229.02
ACAD FILE: 33229-DETAILS.DWG
SCALE: NTS
DATE: AUGUST 4, 2014

UNDERGROUND DETENTION SYSTEM DETAILS

Project Name and Location:
PAMELA ROAD EXTENSION
PAMELA ROAD, PORTLAND, MAINE 04101

Prepared For:
TELOS CAPITAL, LLC
2 MILK STREET, PORTLAND, MAINE 04101

Northwest Civil Solutions
SURVEYING ENGINEERING LAND PLANNING
153 US ROUTE 1, SCARBOROUGH, MAINE 04074
Tel: 207.883.1000
Fax: 207.883.2227
Email: info@northwestcivilsolutions.com

SHEET 12 OF 12