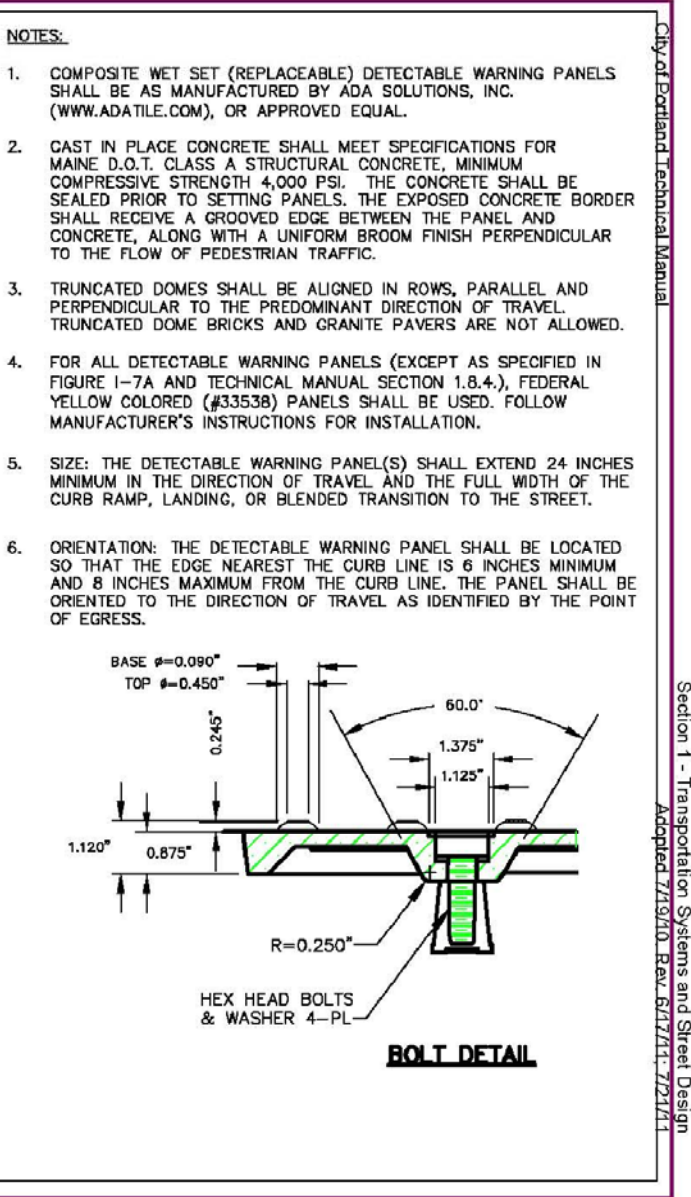
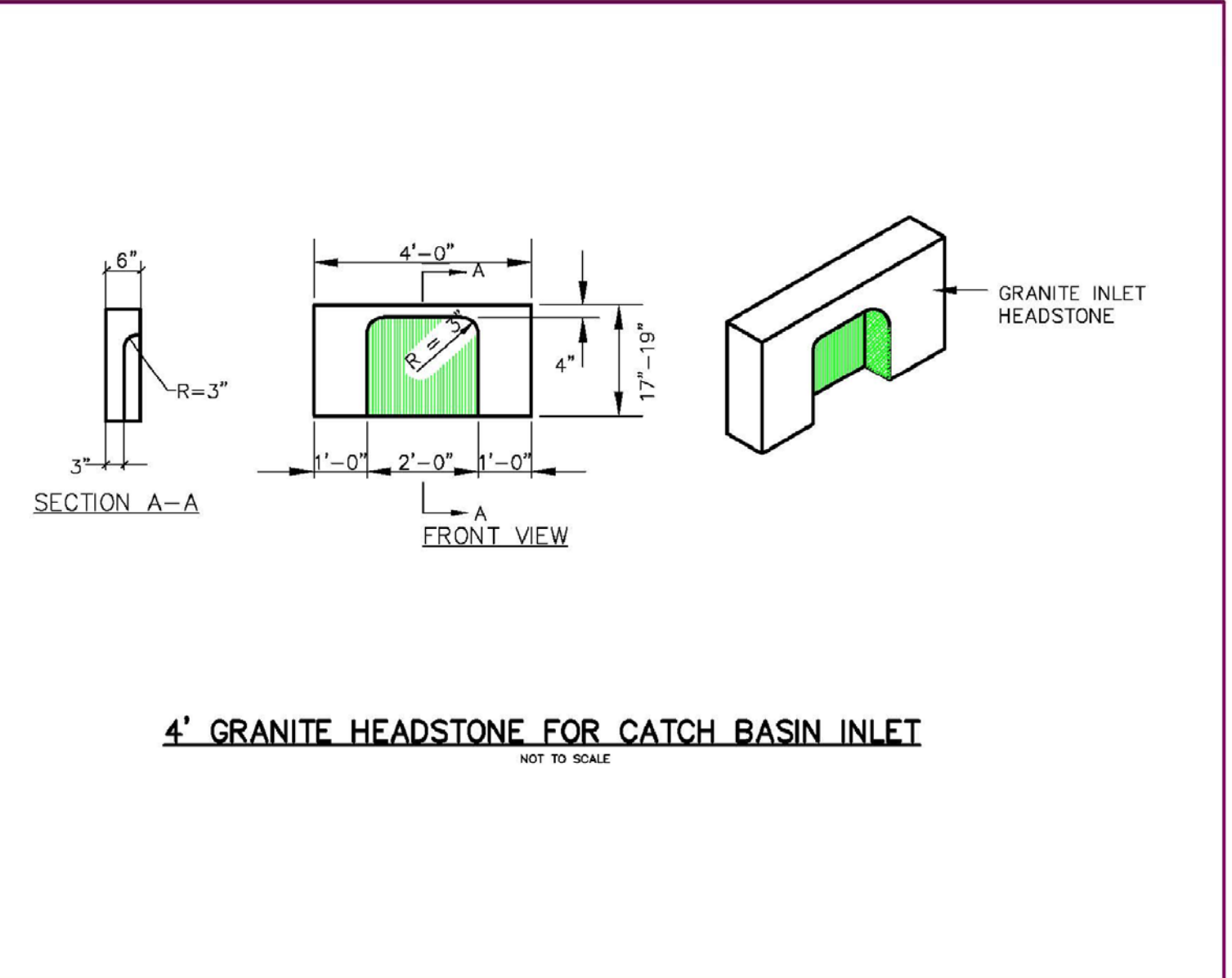


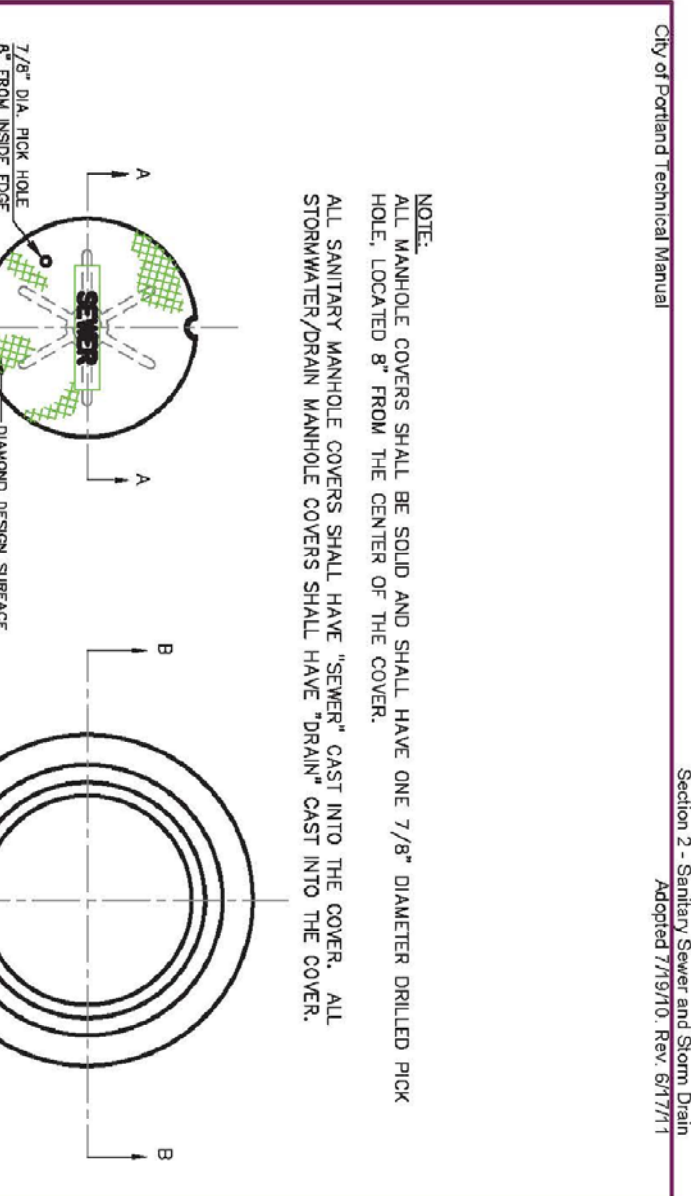
DATE: AUGUST 2009
 CITY OF PORTLAND, MAINE
 TECHNICAL STANDARDS MANUAL
 TRANSPORTATION SYSTEMS AND STREET DESIGN
 SECTION I
BITUMINOUS DRIVEWAY APRON
 FIGURE: I-13



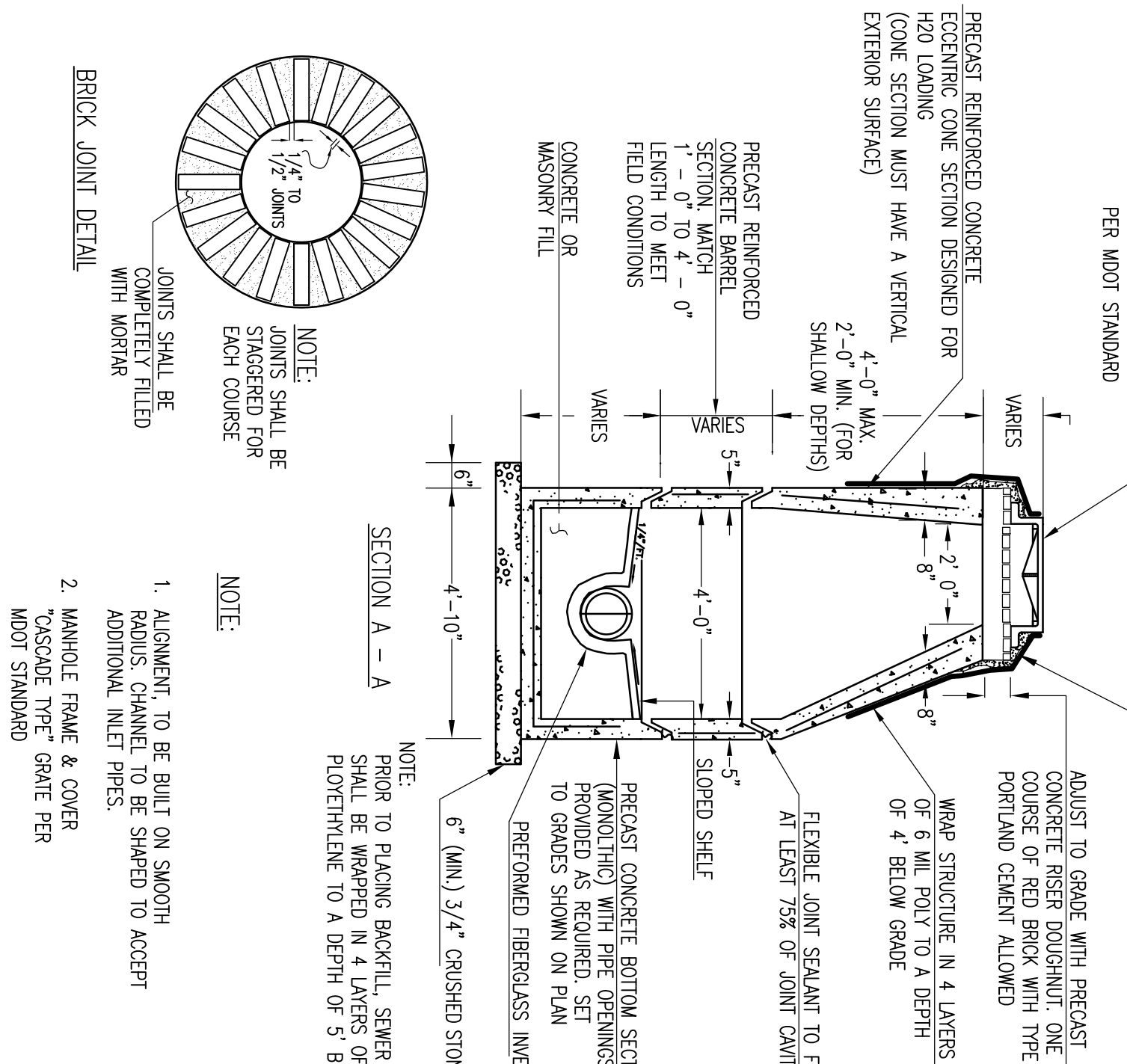
DATE: JUNE 2, 2010
 REVISED: MARCH 2, 2011
 CITY OF PORTLAND, MAINE
 TECHNICAL STANDARDS MANUAL
 TRANSPORTATION SYSTEMS AND STREET DESIGN
 SECTION I
SIDEWALK RAMP DETECTABLE WARNING PANEL
 FIGURE: I-7



DATE: AUGUST 2009
 CITY OF PORTLAND, MAINE
 TECHNICAL STANDARDS MANUAL
 SANITARY SEWER AND STORM DRAIN DESIGN STANDARDS
 SECTION II
4' GRANITE HEADSTONE FOR CATCH BASIN INLET
 FIGURE: II-11



DATE: AUGUST 2009
 CITY OF PORTLAND, MAINE
 TECHNICAL STANDARDS MANUAL
 SANITARY SEWER AND STORM DRAIN DESIGN STANDARDS
 SECTION II
CAST IRON MANHOLE COVER AND FRAME
 FIGURE: II-5

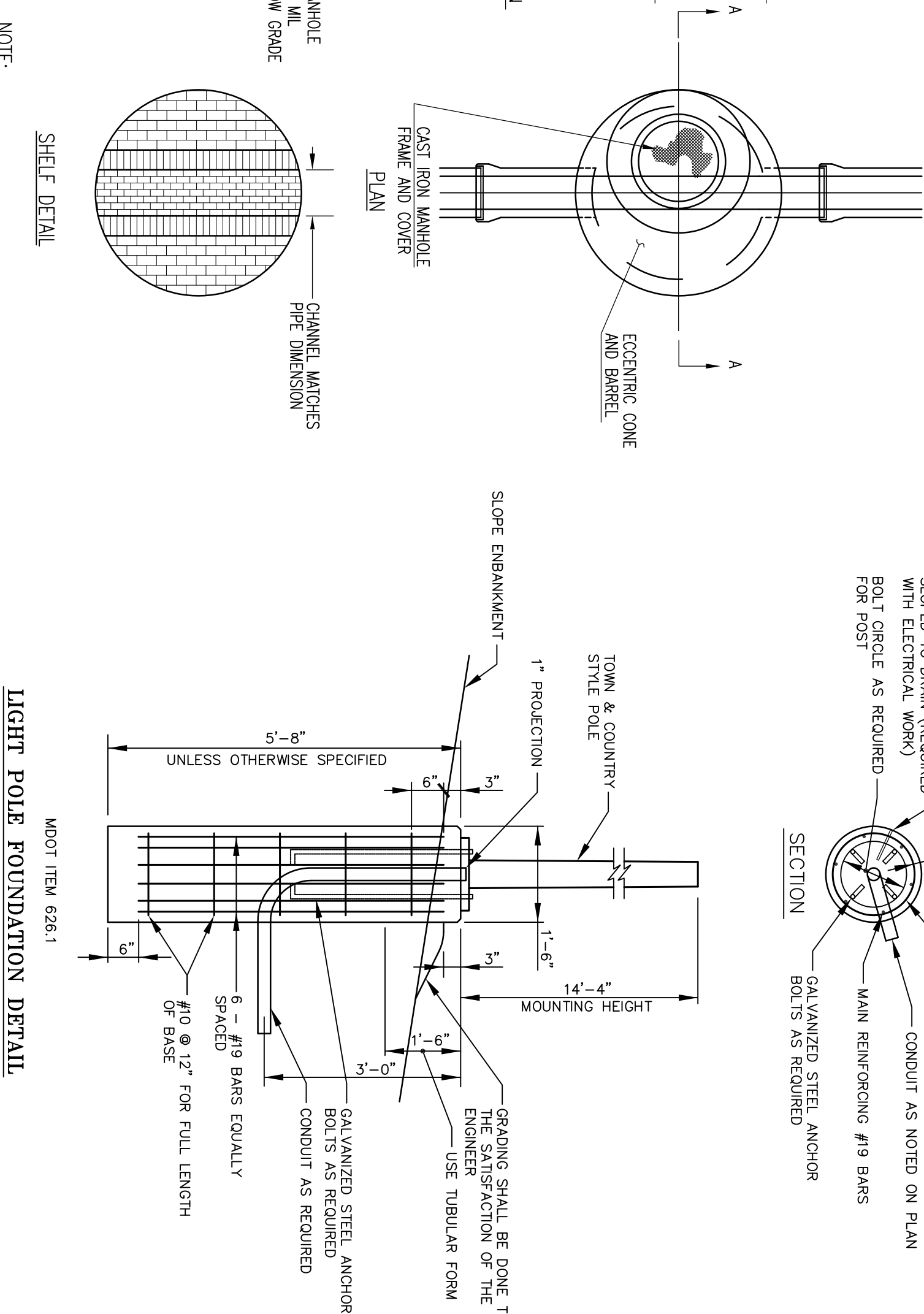
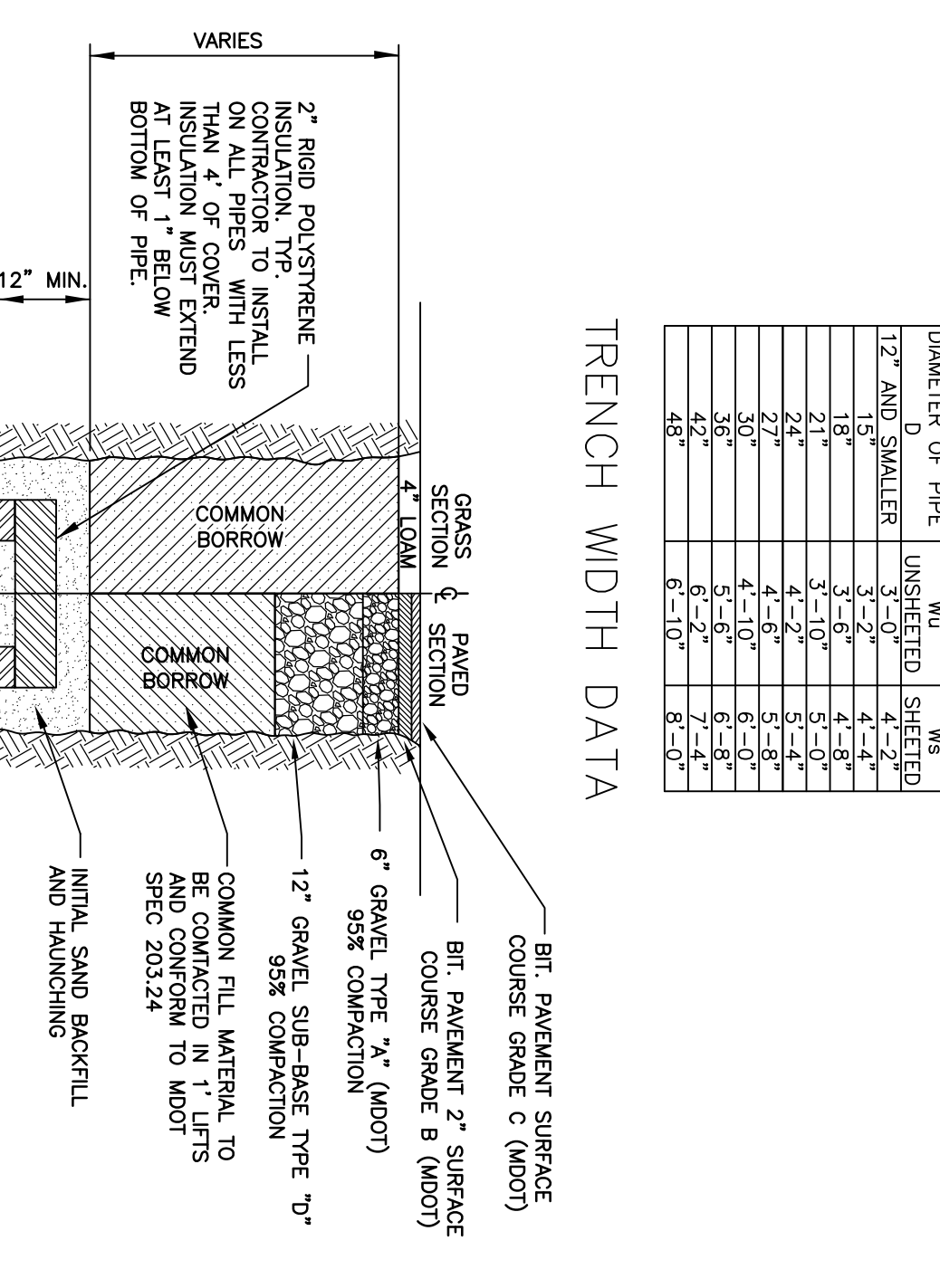


CATCH BASIN/DRAIN MANHOLE DIMENSIONAL REQUIREMENTS

I.D.	WALL WIDTH	FLOOR THICKNESS
4'-0"	5"	6"
5'-0"	6"	6"
6'-0"	7"	6"
8'-0"	8"	6"
10'-0"	10"	9"

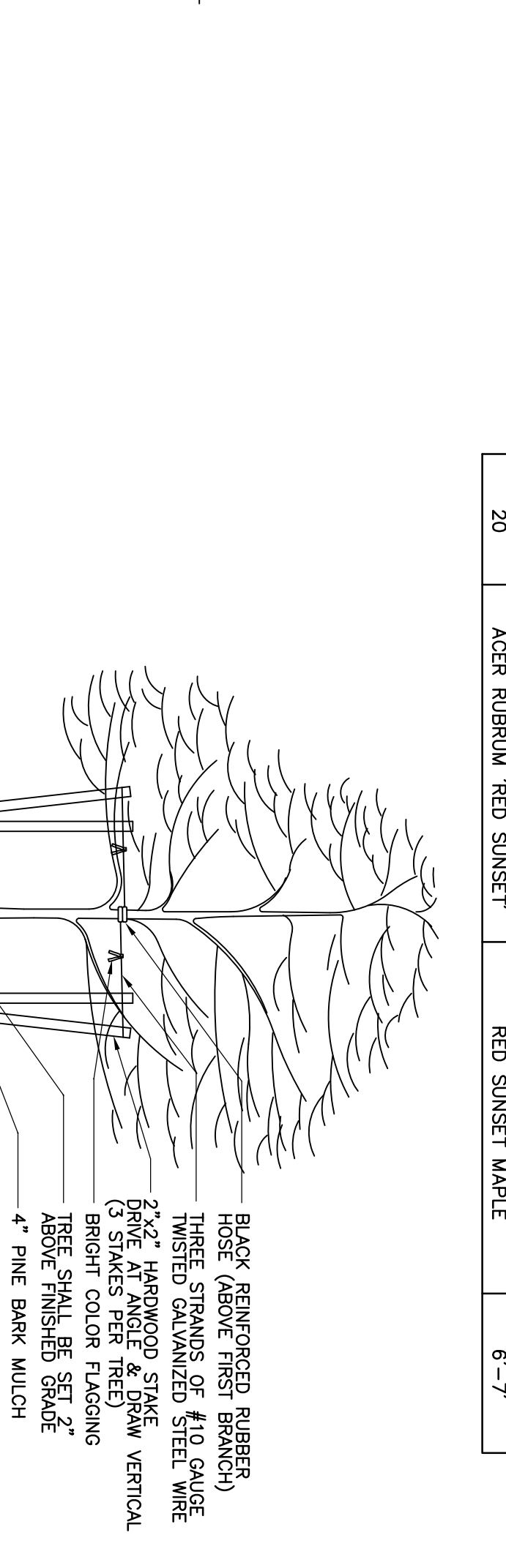
TRENCH WIDTH DATA

TRENCH WIDTH	W ₁ OR W ₂	W ₃
12" AND SMALLER	3'-2"	4'-4"
14"	3'-6"	4'-8"
16"	3'-10"	5'-2"
18"	4'-2"	5'-6"
20"	4'-6"	6'-0"
22"	4'-10"	6'-4"
24"	5'-2"	6'-8"
26"	5'-6"	7'-2"
28"	6'-0"	7'-6"
30"	6'-4"	8'-0"
32"	6'-8"	8'-4"
34"	7'-2"	8'-8"
36"	7'-6"	9'-2"
38"	8'-0"	9'-6"
40"	8'-4"	10'-0"



PLANTING SCHEDULE

QUANTITY	BOTANICAL NAME	COMMON NAME	SIZE
20	ACER RUBRUM 'RED SUNSET'	RED SUNSET MAPLE	6'-7"



THIS PLAN IS FOR REVIEW PURPOSES ONLY AND IS NOT INTENDED FOR CONSTRUCTION OR RECORDING

CONSTRUCTION DETAILS - SHEET 2

PROJECT NUMBER: 33229.02
 ACAD TITLE: 33229-DETAILS.DWG
 SCALE: N.T.S.
 DATE: AUGUST 4, 2014

Prepared for:
TELLOS CAPITAL, LLC
 2 MILK STREET, PORTLAND, MAINE 04101

Project Name and Location:
PAMELA ROAD EXTENSION
 PAMELA ROAD, PORTLAND, MAINE 04101

Northwest
Civil Solutions
 SURVEYING ENGINEERING LAND PLANNING
 INCORPORATED
 153 US ROUTE 1, SCARBOROUGH, MAINE 04074
 TEL: 207.883.1000
 FAX: 207.883.1001
 INFO@NWCIVILSOLUTIONS.COM