

**LEGEND**

- BOUNDARY LINE
- EDGE OF PAVEMENT
- RIGHT-OF-WAY LINE
- - - ABUTTER
- - - EXISTING WETLAND
- - - EXISTING WATERLINE EASEMENT
- ⊙ EXISTING DRAIN MANHOLE
- - - 116 EXISTING CONTOUR
- - - 112 PROPOSED CONTOUR
- - - PROPOSED DRAIN LINE
- PROPOSED DRAIN MANHOLE
- PROPOSED CATCH BASIN

**NOTES**

**WETLAND IMPACTS:**

AREA "A" = 3,575 SF  
 AREA "B" = 1,822 SF  
 TOTAL = 5,397 SF

1. TOTAL WETLAND IMPACT = 5,397 SF AND REQUIRES A NRPA TIER 1 PERMIT.

**STRUCTURE SCHEDULE**

STRUCTURE	RIM	INVERT IN	INVERT OUT
CB-1	108.76	105.30' (FILTER) 105.25' (UNDERDRAIN)	103.75' (SD-1)
CB-2	108.76'	105.30' (FILTER) 105.25' (UNDERDRAIN) 103.35' (SD-1)	102.10' (SD-2)
CB-3	118.86'	115.25' (FILTER) 115.35' (UNDERDRAIN)	113.25' (SD-4)
CB-4	108.76'	115.25' (FILTER) 115.35' (UNDERDRAIN) 113.00' (SD-1)	112.90' (SD-5)
DMH-1	107.50'	100.29' (12" EXIST.) 102.20' (SD-3)	102.20' (12" EXIST.)
DMH-2	112.63'	109.23' (UNDERDRAIN) 107.00' (SD-5) 108.00' (SD-7)	106.90' (SD-6)

**PIPE SCHEDULE**

PIPE	PIPE DIAMETER	PIPE LENGTH	PIPE SLOPE (FT/FT)	TYPE
SD-1	12"	20'	0.0200 FT/FT	PVC SDR 35
SD-2	24"	5'	0.0200 FT/FT	PVC SDR 35
SD-3	12"	44'	0.0200 FT/FT	PVC SDR 35
SD-4	12"	20'	0.0100 FT/FT	PVC SDR 35
SD-5	12"	134'	0.0464 FT/FT	PVC SDR 35
SD-6	12"	208'	0.0171 FT/FT	PVC SDR 35
SD-7	12"	55'	0.0360 FT/FT	PVC SDR 35

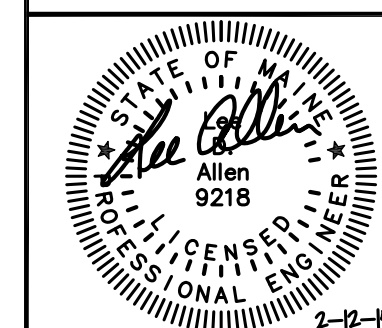
Revision	By	Date	Change
5	SMA	2/12/15	REVISED OWNER/APPLICANT
4	TAL	11/19/14	REVISED PER CITY COMMENTS
3	TAL	11/14/14	REVISED PER CITY COMMENTS
2	SMA	11/10/14	REVISED PER CITY COMMENTS
1	SMA	10/14/14	REVISED PER CITY COMMENTS

PROJECT NUMBER: 33229.02 ACAD FILE: 33229-GRADING.DWG SCALE: 1" = 40' DATE: AUGUST 4, 2014

**GRADING & DRAINAGE PLAN**

Project Name:  
**PAMELA ROAD EXTENSION**  
 PAMELA ROAD, PORTLAND, MAINE 04101

Owner/Applicant:  
**GENEVA VENTURES, LLC**  
 190 US Route 1, PMB 161, FALMOUTH, MAINE 04105



**Northeast Civil Solutions**  
 INCORPORATED  
 153 US ROUTE 1, SCARBOROUGH, MAINE 04074  
 tel 207.883.1000 fax 207.883.1001 e-mail info@northeastcivilsolutions.com  
 800.882.2227

E:\LAND PROJECT\33000\33229 CREST VIEW PLANSET\33229-GRADING.DWG