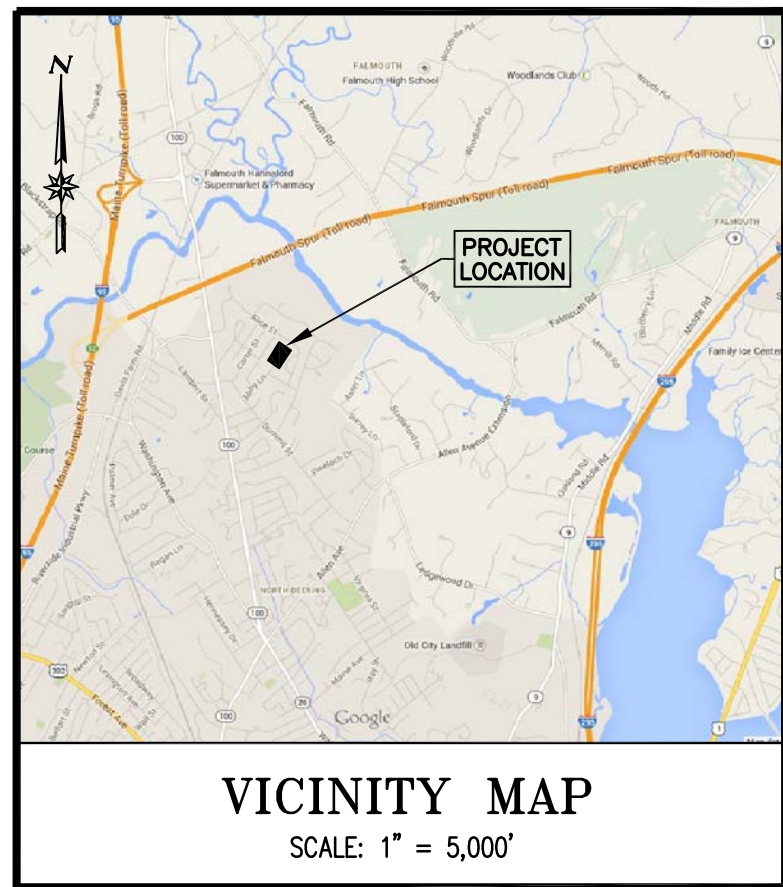
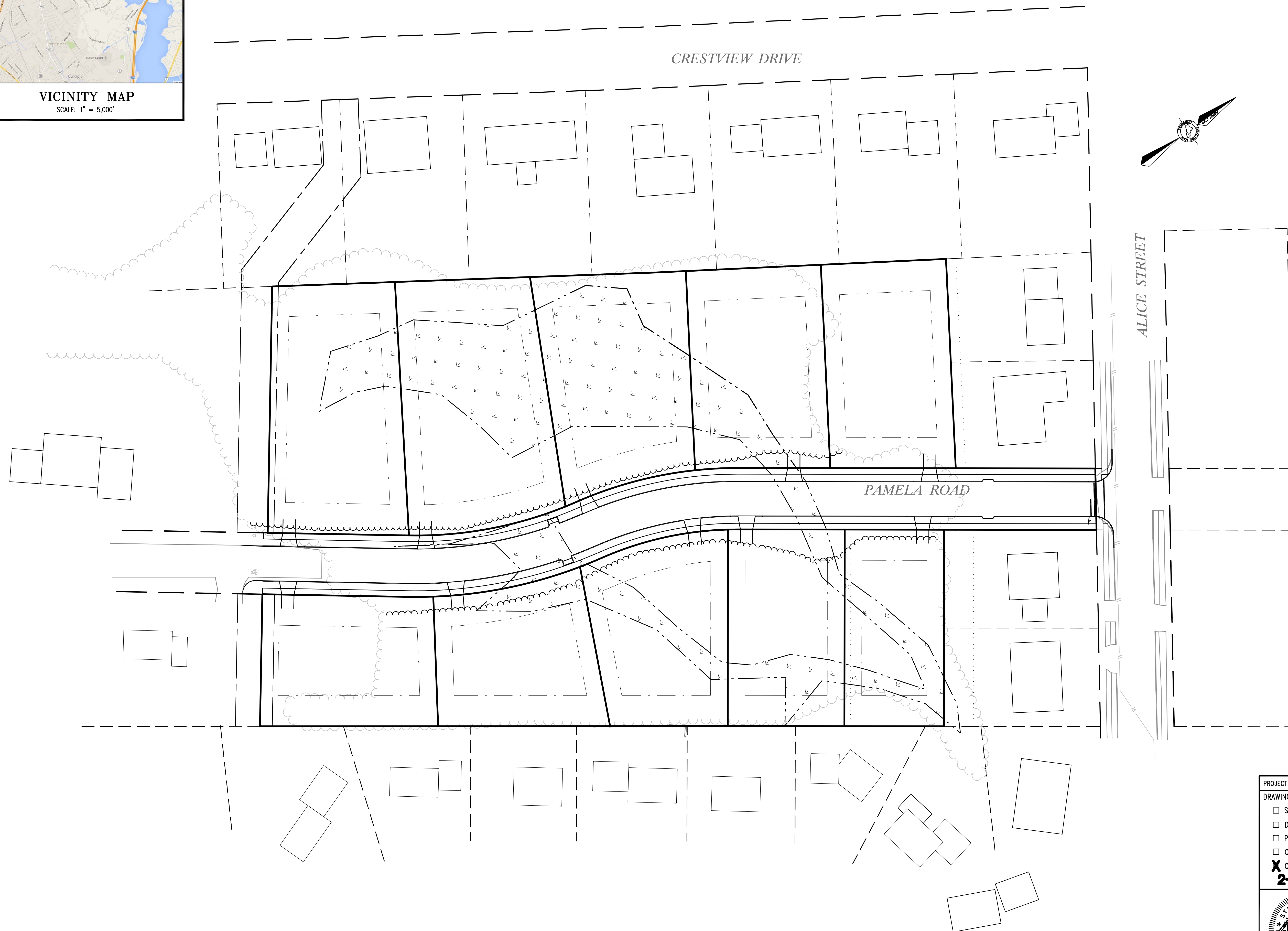


PAMELA ROAD EXTENSION PORTLAND, MAINE



SHEET INDEX

1. COVER/INDEX/VICINITY MAP
2. AMENDED SUBDIVISION PLAN
3. GRADING & DRAINAGE PLAN
4. SITE LAYOUT & UTILITY PLAN
5. PAMELA ROAD EXTENSION PROFILE
6. EROSION AND SEDIMENTATION CONTROL PLAN
7. EROSION & SEDIMENTATION CONTROL NOTES AND DETAILS
8. CONSTRUCTION DETAILS - SHEET 1
9. CONSTRUCTION DETAILS - SHEET 2
10. CONSTRUCTION DETAILS - SHEET 3
11. STORMBASIN DETAILS
12. UNDERGROUND DETENTION SYSTEM DETAILS



Revision	By	Date	Change
5	SMA	2/12/15	REVISED OWNER/APPLICANT
4	TAL	11/19/14	REVISED PER CITY COMMENTS
3	SMA	11/19/14	REVISED PER CITY COMMENTS
2	SMA	11/10/14	REVISED PER PEER REVIEW COMMENTS
1	SMA	10/14/14	REVISED PER TOWN COMMENTS

PROJECT NUMBER: 33229.02 ACAD FILE: 33229-COVER.DWG SCALE: 1" = 40' DATE: AUGUST 4, 2014

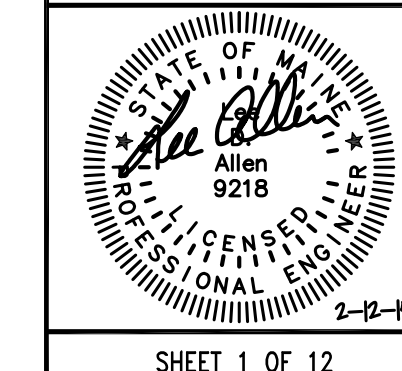
DRAWING STATUS

- SITE PLAN REVIEW
- DEP REVIEW
- PLANNING BOARD
- CLIENT REVIEW
- CONSTRUCTION
2-12-15

Drawing Name:
COVER/INDEX/VICINITY MAP

Project Name:
**PAMELA ROAD EXTENSION
PAMELA ROAD, PORTLAND, MAINE 04101**

Owner/Applicant:
**GENEVA VENTURES, LLC
190 US Route 1, PMB 161, FALMOUTH, MAINE 04105**



Northeast Civil Solutions
INCORPORATED

153 US ROUTE 1, SCARBOROUGH, MAINE 04074

tel 207.883.1000 fax 207.883.1001 e-mail info@northeastcivilsolutions.com
800.882.2227