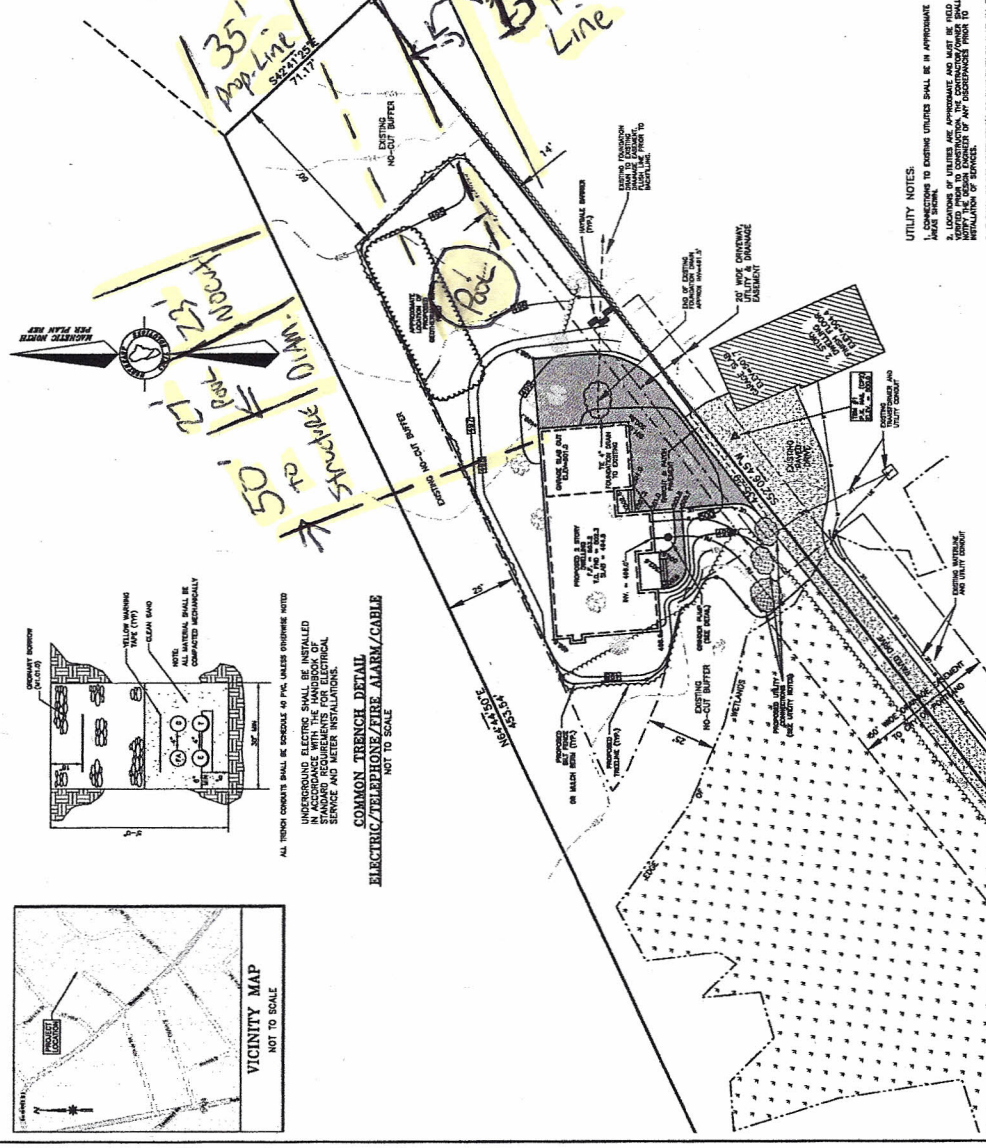
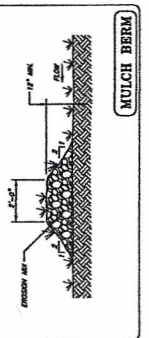


**SEWAGE GRINDER PUMP**  
NOT TO SCALE

SEE INSTALLATION INSTRUCTIONS FOR FURTHER DETAILS

**MULCH BERM**  
NOT TO SCALE

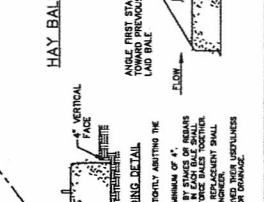
CONSTRUCTION OF MULCH BERM SHALL BE IN ACCORDANCE WITH THE FOLLOWING: 1. MULCH SHALL BE PLACED IN A ROW WITH ENDS TIGHTLY ABUTTING THE MULCH BERM. 2. EACH BALE SHALL BE COMPOSED OF THE SOIL A MINIMUM OF 4\"/>



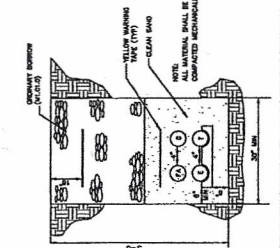
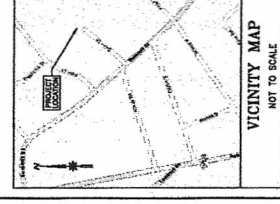
**UTILITY NOTES:**  
1. CONNECTIONS TO EXISTING UTILITIES SHALL BE IN ACCORDANCE WITH THE CITY OF PORTLAND UTILITIES DEPARTMENT. 2. THE CONTRACTOR SHALL VERIFY THE LOCATION AND DEPTH OF ALL UTILITIES PRIOR TO CONSTRUCTION. 3. THE CONTRACTOR SHALL BE RESPONSIBLE FOR OBTAINING ALL NECESSARY PERMITS FROM THE CITY OF PORTLAND UTILITIES DEPARTMENT. 4. THE CONTRACTOR SHALL BE RESPONSIBLE FOR PROTECTING ALL EXISTING UTILITIES FROM DAMAGE DURING CONSTRUCTION. 5. THE CONTRACTOR SHALL BE RESPONSIBLE FOR RESTORING ALL UTILITIES TO ORIGINAL OR BETTER CONDITION AFTER CONSTRUCTION IS COMPLETE.

**LEGEND**

FOUR INCH PIPE  
FOUR INCH RIBBON  
FOUR INCH RIBBON WITH JOINTS  
FOUR INCH RIBBON WITH JOINTS AND VALVES  
FOUR INCH RIBBON WITH JOINTS AND VALVES AND MANHOLES  
FOUR INCH RIBBON WITH JOINTS AND VALVES AND MANHOLES AND SERVICE CONNECTIONS  
FOUR INCH RIBBON WITH JOINTS AND VALVES AND MANHOLES AND SERVICE CONNECTIONS AND METER ENCLOSURES  
FOUR INCH RIBBON WITH JOINTS AND VALVES AND MANHOLES AND SERVICE CONNECTIONS AND METER ENCLOSURES AND ELECTRICAL SERVICE



**NOTES:**  
1. HAY BALE SEDIMENT BARRIERS SHALL BE PLACED IN A ROW WITH ENDS TIGHTLY ABUTTING THE ADJACENT BARRIERS. 2. EACH BALE SHALL BE COMPOSED OF THE SOIL A MINIMUM OF 4\"/>



**ELECTRIC/TELEPHONE/FIRE ALARM/CABLE**  
NOT TO SCALE

ALL TRENCH CONCRETS SHALL BE GRADE 40 PCL UNLESS OTHERWISE NOTED

INSTALLATION OF ELECTRICAL SHALL BE INSTALLED IN ACCORDANCE WITH THE MANHOLEBOOK OF STANDARD REQUIREMENTS FOR ELECTRICAL SERVICE AND METER INSTALLATION.

PROJECT NUMBER	2180
DATE	12/14/2018
SCALE	1" = 20'
DATE	12/14/2018
PROJECT NAME	GRADING AND UTILITY PLAN
CLIENT	SINGLE FAMILY RESIDENTIAL LOT
DESIGNER	JERRY LECGERE
LOCATION	MORNING HILL NEIGHBORHOOD, BERRY, MAINE 03964

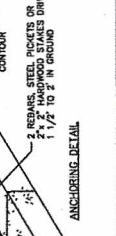
**Northwest Civil Solutions**  
135 US ROUTE 1, SANDBOROUGH, MAINE 03974  
TEL: 603.883.3337  
WWW.NORTHWESTCIVILSOLUTIONS.COM



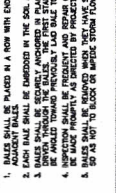
**NOTES:**  
1. REFERENCED TO THE FOLLOWING PLAN OF RECORD: PORTLAND AND GORHAM WATER DEPARTMENT, 11/11/2018. 2. THE CONTRACTOR SHALL VERIFY THE LOCATION AND DEPTH OF ALL UTILITIES PRIOR TO CONSTRUCTION. 3. THE CONTRACTOR SHALL BE RESPONSIBLE FOR OBTAINING ALL NECESSARY PERMITS FROM THE CITY OF PORTLAND UTILITIES DEPARTMENT. 4. THE CONTRACTOR SHALL BE RESPONSIBLE FOR PROTECTING ALL EXISTING UTILITIES FROM DAMAGE DURING CONSTRUCTION. 5. THE CONTRACTOR SHALL BE RESPONSIBLE FOR RESTORING ALL UTILITIES TO ORIGINAL OR BETTER CONDITION AFTER CONSTRUCTION IS COMPLETE.

**LEGEND**

FOUR INCH PIPE  
FOUR INCH RIBBON  
FOUR INCH RIBBON WITH JOINTS  
FOUR INCH RIBBON WITH JOINTS AND VALVES  
FOUR INCH RIBBON WITH JOINTS AND VALVES AND MANHOLES  
FOUR INCH RIBBON WITH JOINTS AND VALVES AND MANHOLES AND SERVICE CONNECTIONS  
FOUR INCH RIBBON WITH JOINTS AND VALVES AND MANHOLES AND SERVICE CONNECTIONS AND METER ENCLOSURES  
FOUR INCH RIBBON WITH JOINTS AND VALVES AND MANHOLES AND SERVICE CONNECTIONS AND METER ENCLOSURES AND ELECTRICAL SERVICE



**NOTES:**  
1. HAY BALE SEDIMENT BARRIERS SHALL BE PLACED IN A ROW WITH ENDS TIGHTLY ABUTTING THE ADJACENT BARRIERS. 2. EACH BALE SHALL BE COMPOSED OF THE SOIL A MINIMUM OF 4\"/>



**ELECTRIC/TELEPHONE/FIRE ALARM/CABLE**  
NOT TO SCALE

ALL TRENCH CONCRETS SHALL BE GRADE 40 PCL UNLESS OTHERWISE NOTED

INSTALLATION OF ELECTRICAL SHALL BE INSTALLED IN ACCORDANCE WITH THE MANHOLEBOOK OF STANDARD REQUIREMENTS FOR ELECTRICAL SERVICE AND METER INSTALLATION.

PROJECT NUMBER	2180
DATE	12/14/2018
SCALE	1" = 20'
DATE	12/14/2018
PROJECT NAME	GRADING AND UTILITY PLAN
CLIENT	SINGLE FAMILY RESIDENTIAL LOT
DESIGNER	JERRY LECGERE
LOCATION	MORNING HILL NEIGHBORHOOD, BERRY, MAINE 03964