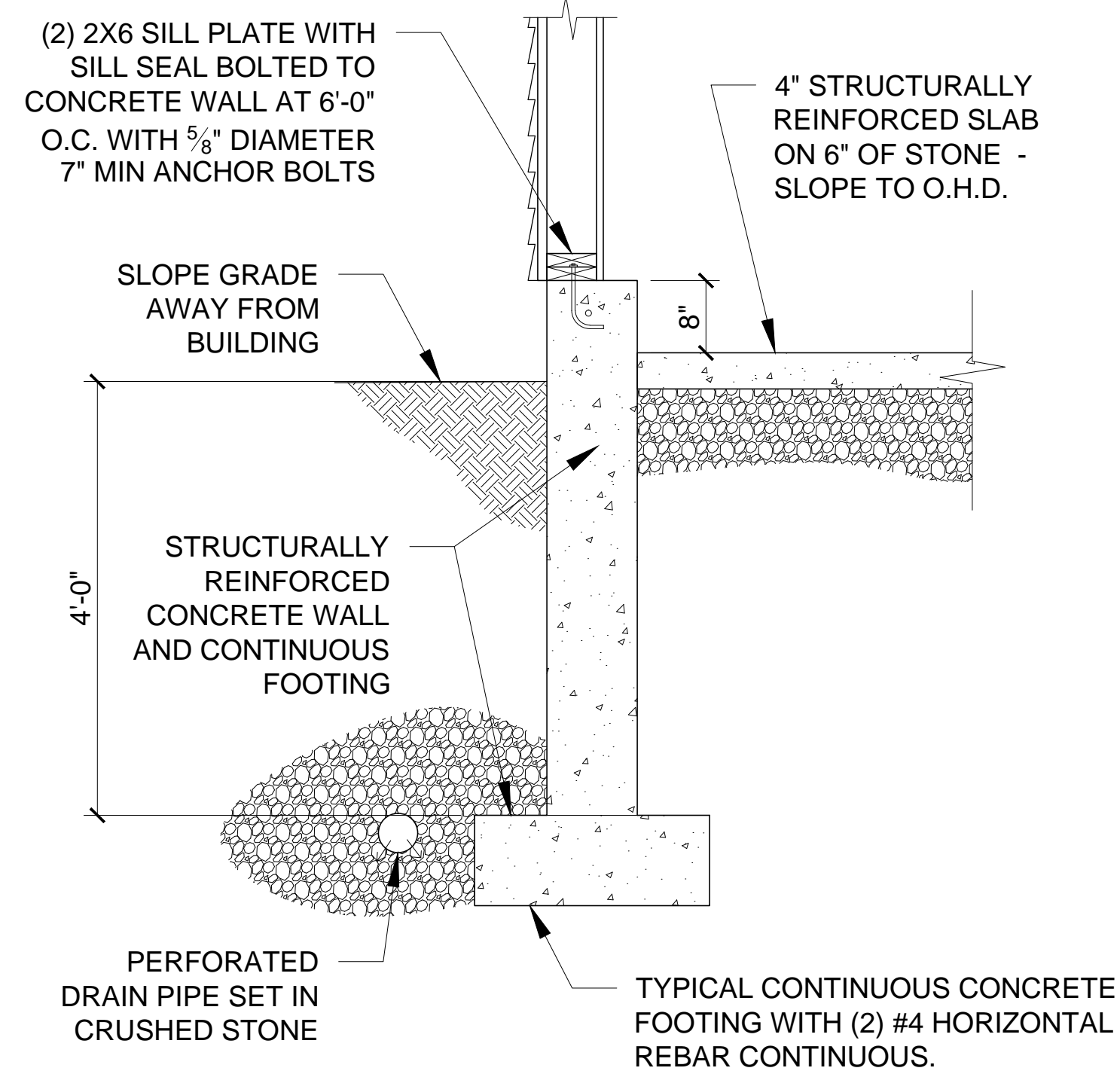
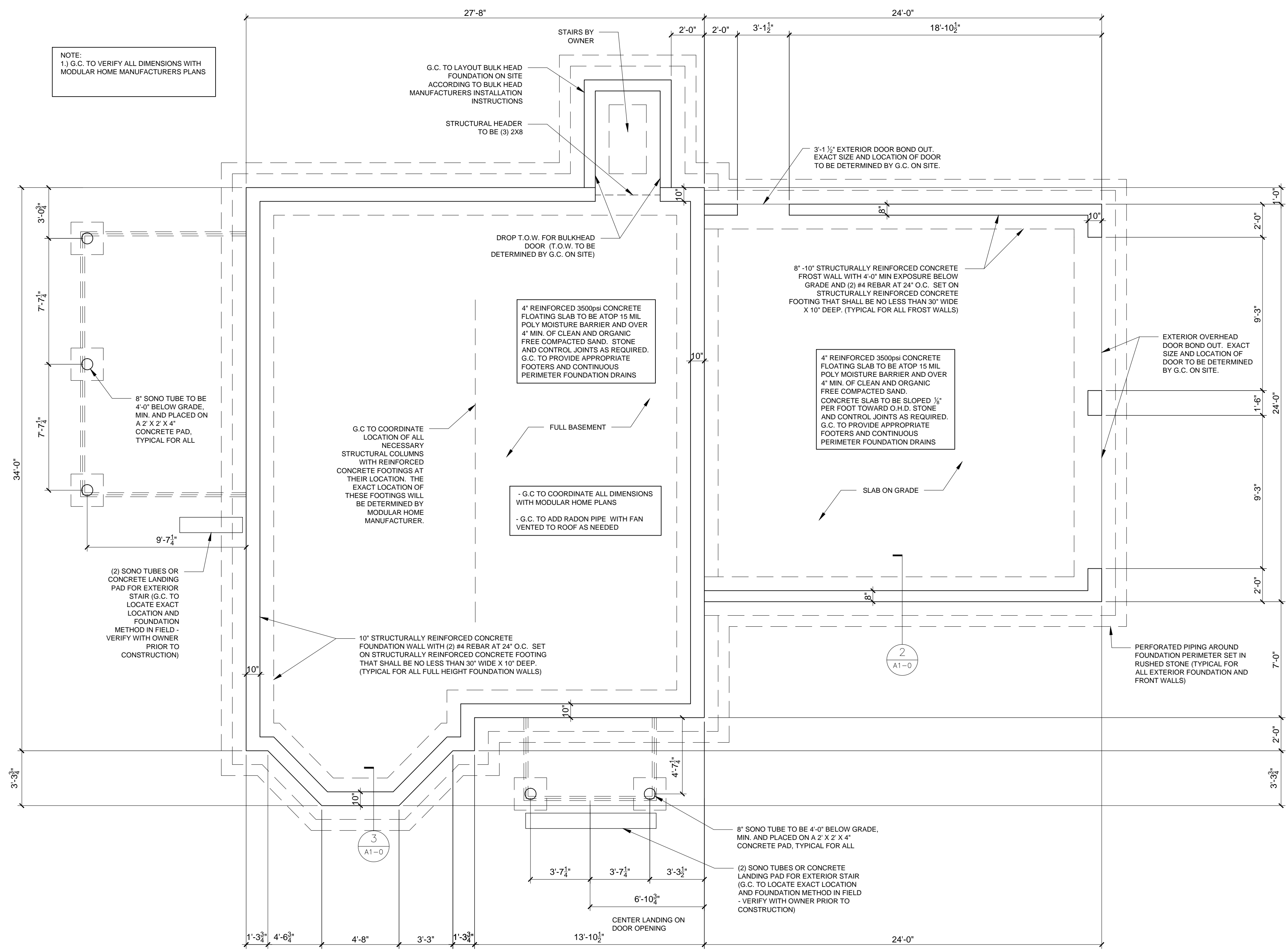


3 FOUNDATION WALL AT BUILDING  
3/4" = 1'-0" (WHEN PRINTED AT 24"X36")



2 FOUNDATION WALL AT BUILDING  
3/4" = 1'-0" (WHEN PRINTED AT 24"X36")



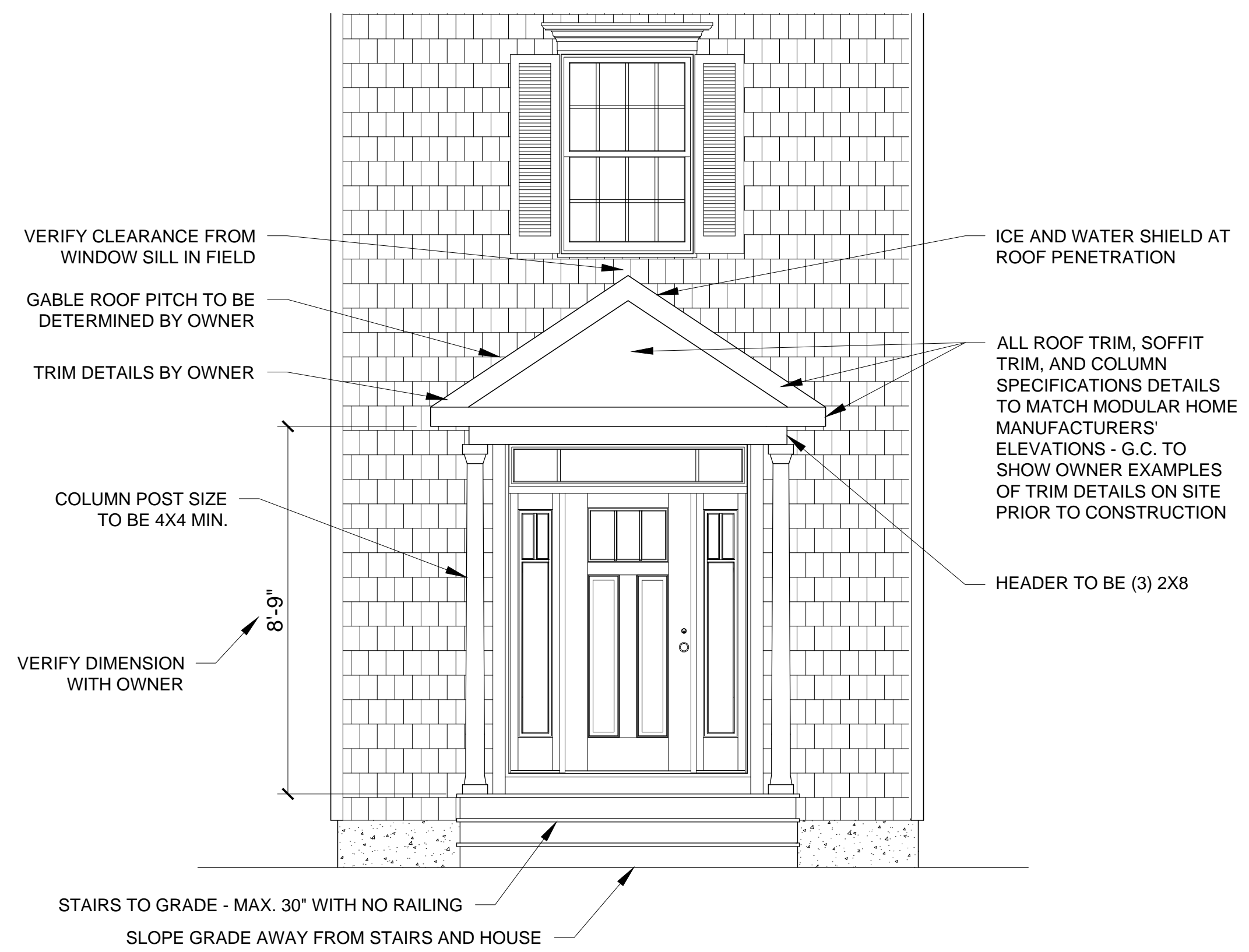
1 FOUNDATION PLAN  
1/4" = 1'-0" (WHEN PRINTED AT 24"X36")

PROGRESS PRINT  
NOT FOR CONSTRUCTION

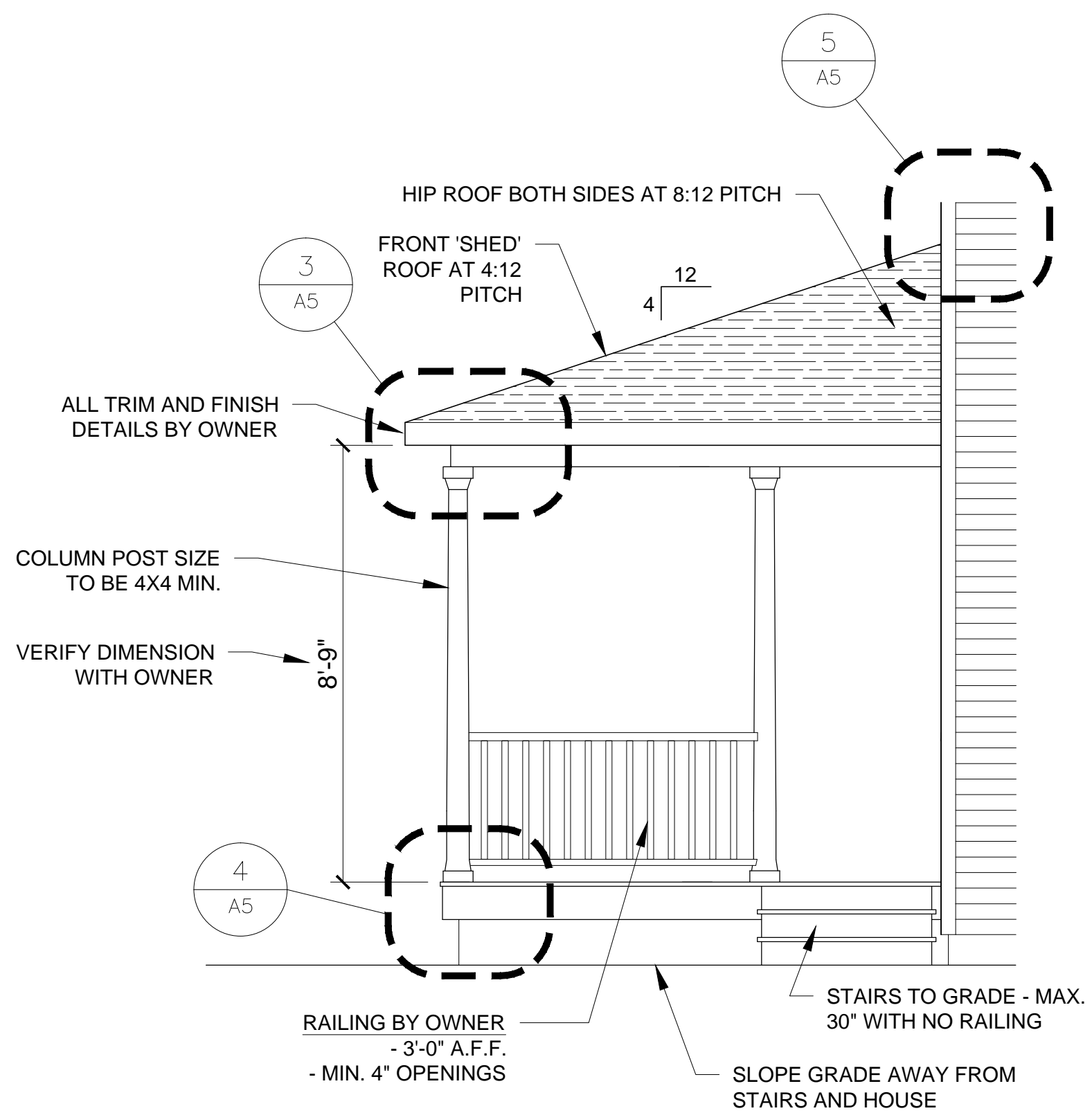


1 BACK ELEVATION  
3/8" = 1'-0" (WHEN PRINTED AT 24"X36")

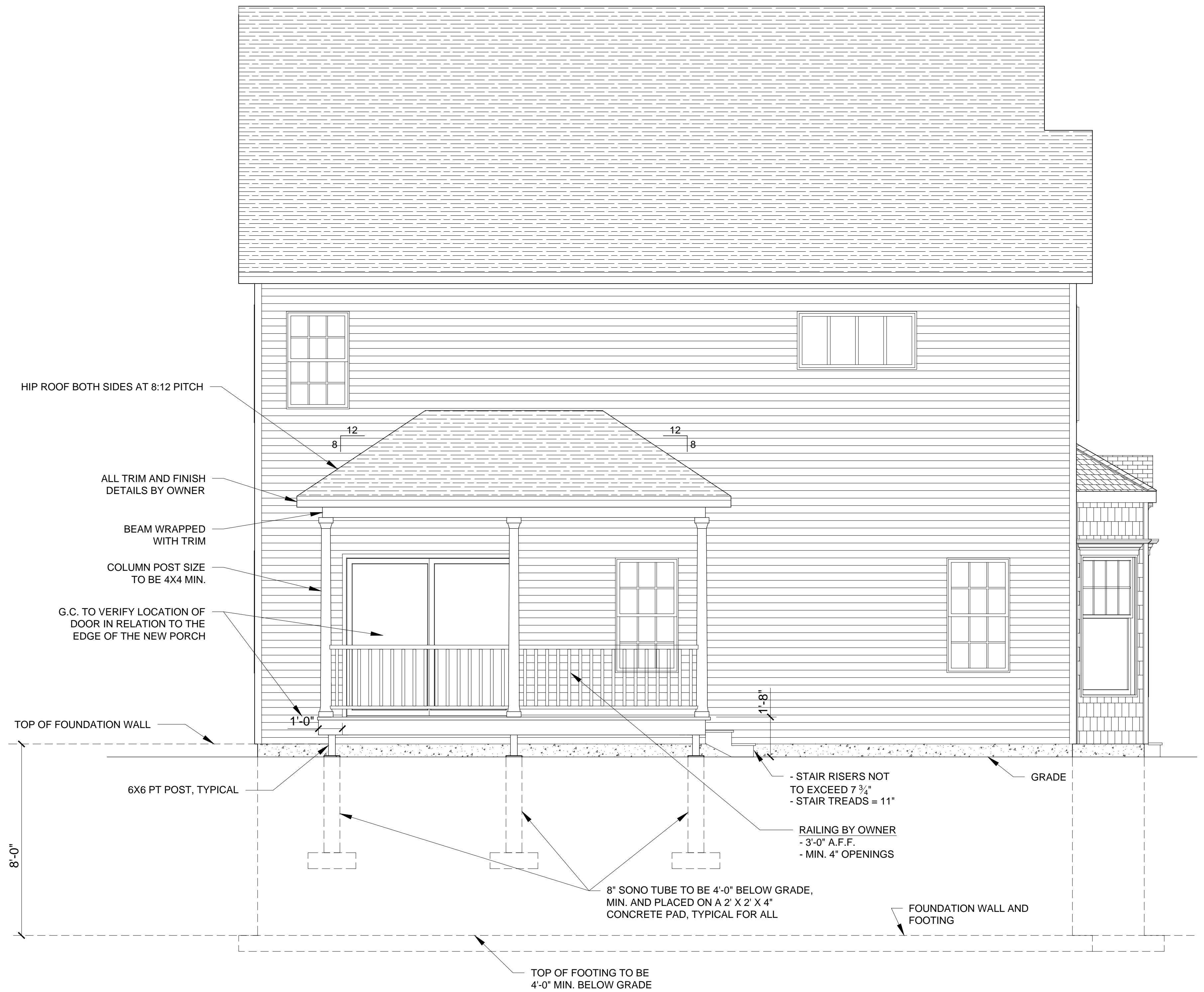
PROGRESS PRINT  
 NOT FOR CONSTRUCTION



2 FRONT PORCH ELEVATION  
3/8" = 1'-0" (WHEN PRINTED AT 24"X36")

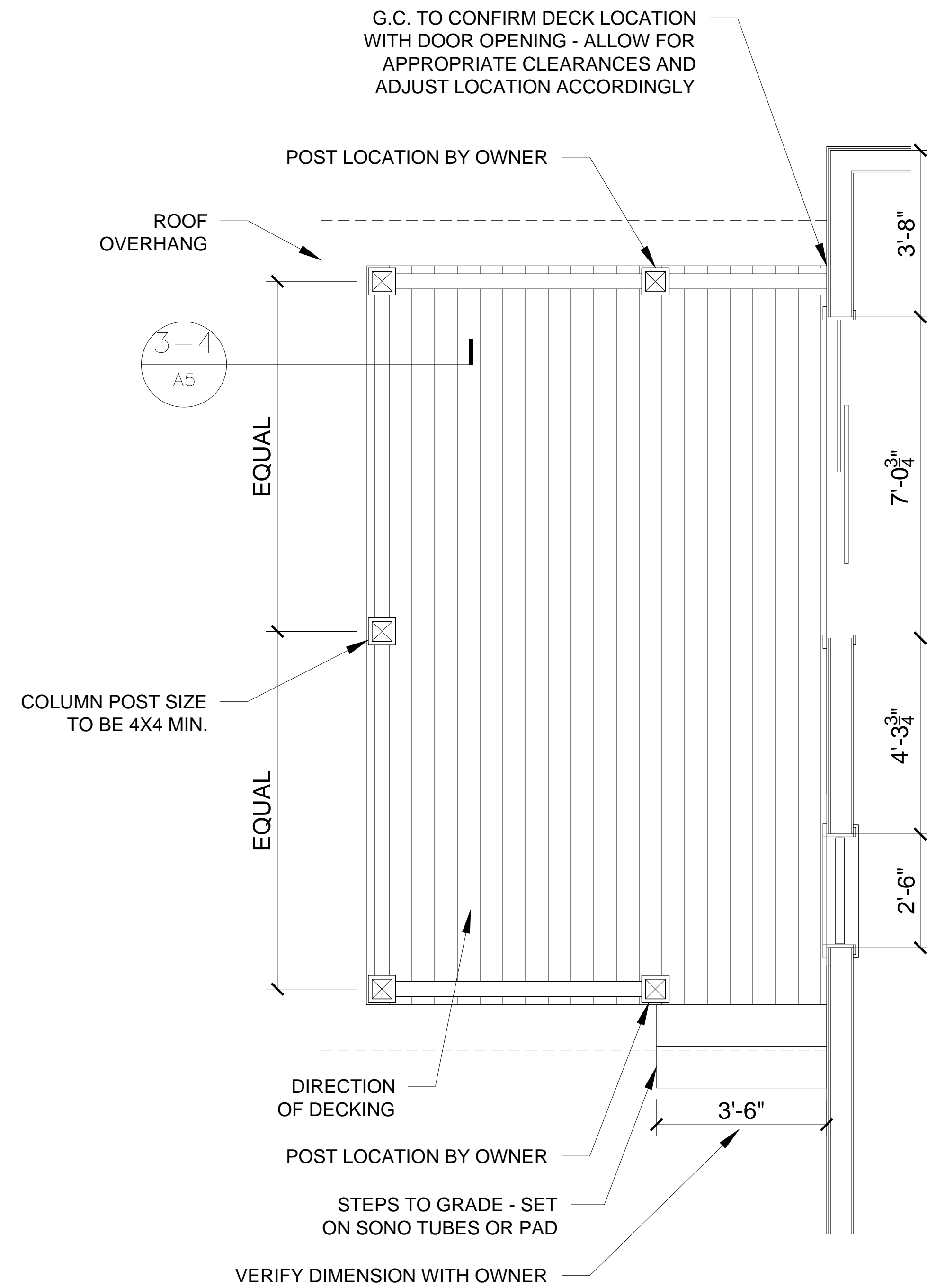


3 SIDE PORCH ELEVATION  
3/8" = 1'-0" (WHEN PRINTED AT 24"X36")

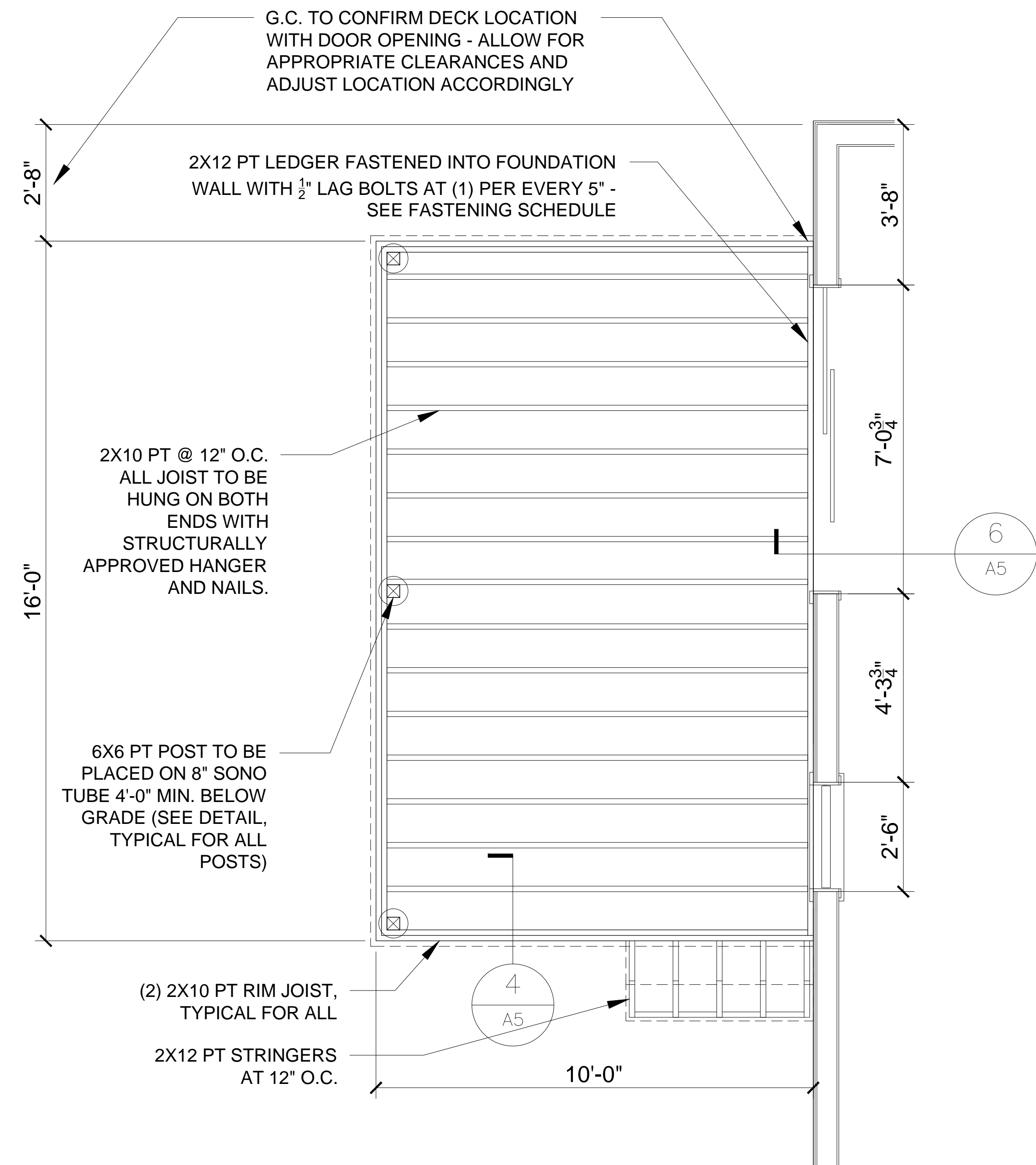


1 SIDE PORCH ELEVATION  
3/8" = 1'-0" (WHEN PRINTED AT 24"X36")

PROGRESS PRINT  
NOT FOR CONSTRUCTION



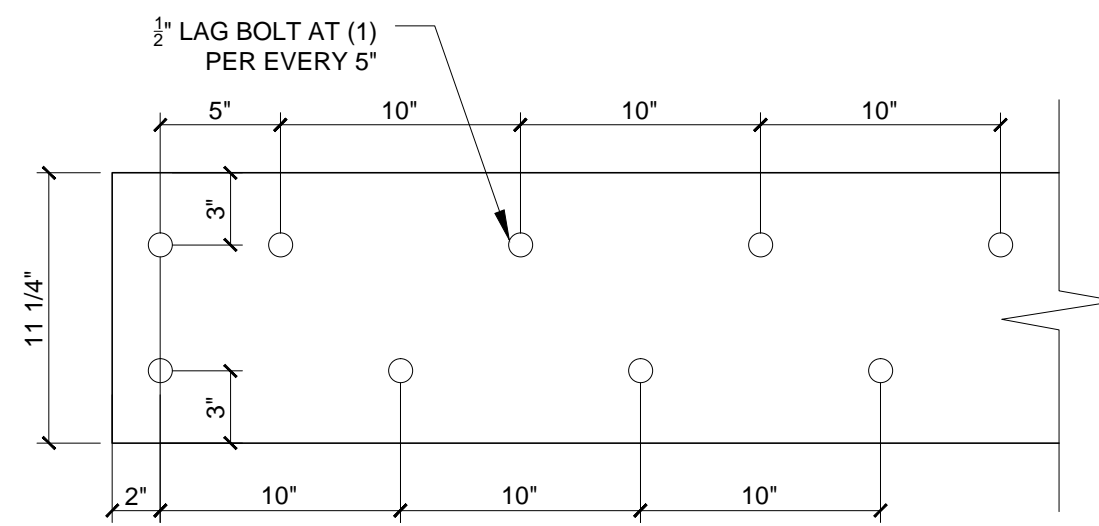
2 SIDE PORCH PLAN  
1/2" = 1'-0" (WHEN PRINTED AT 24"X36")



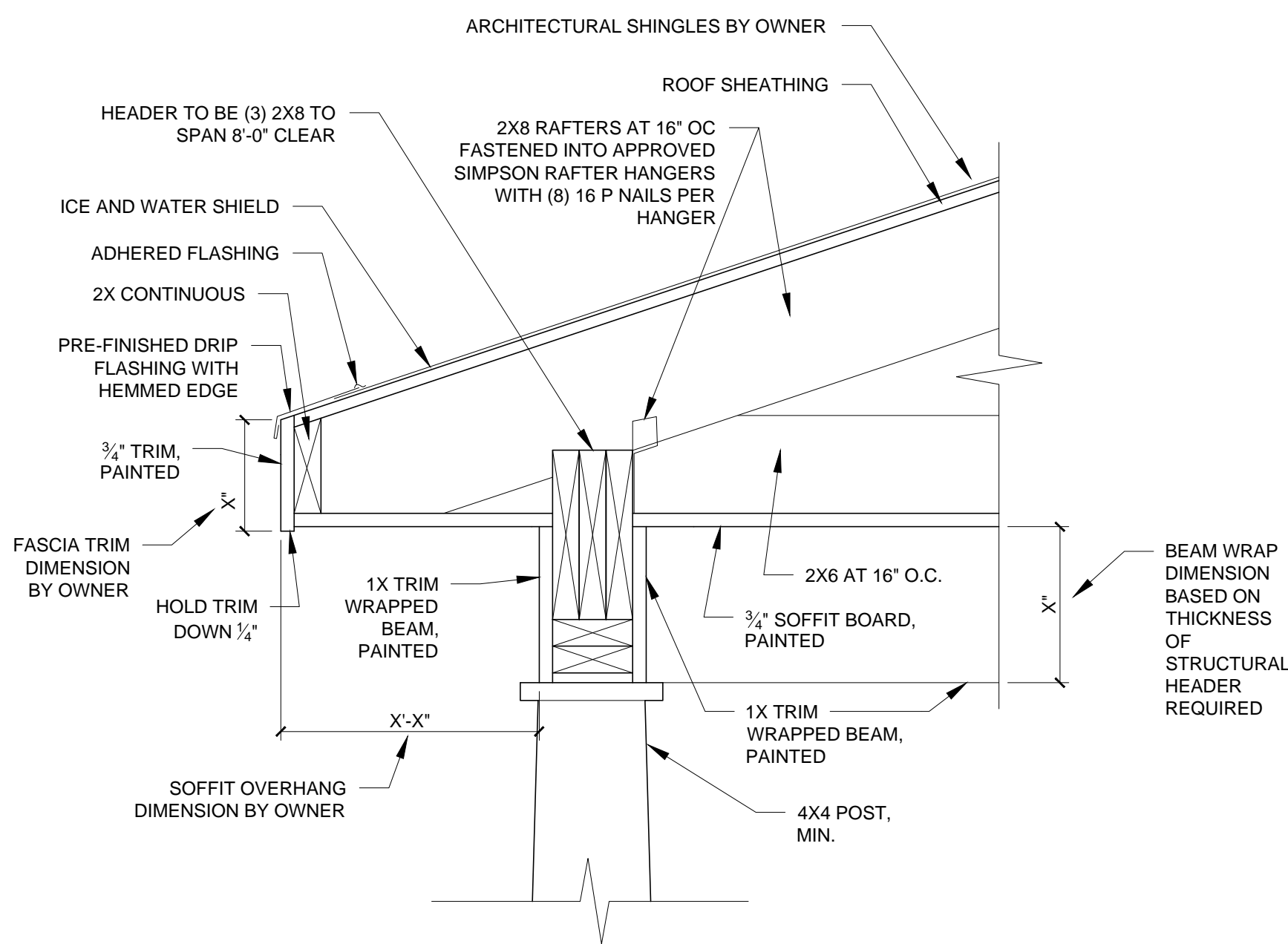
1 SIDE PORCH FRAMING PLAN  
1/2" = 1'-0" (WHEN PRINTED AT 24"X36")

PROGRESS PRINT  
NOT FOR CONSTRUCTION

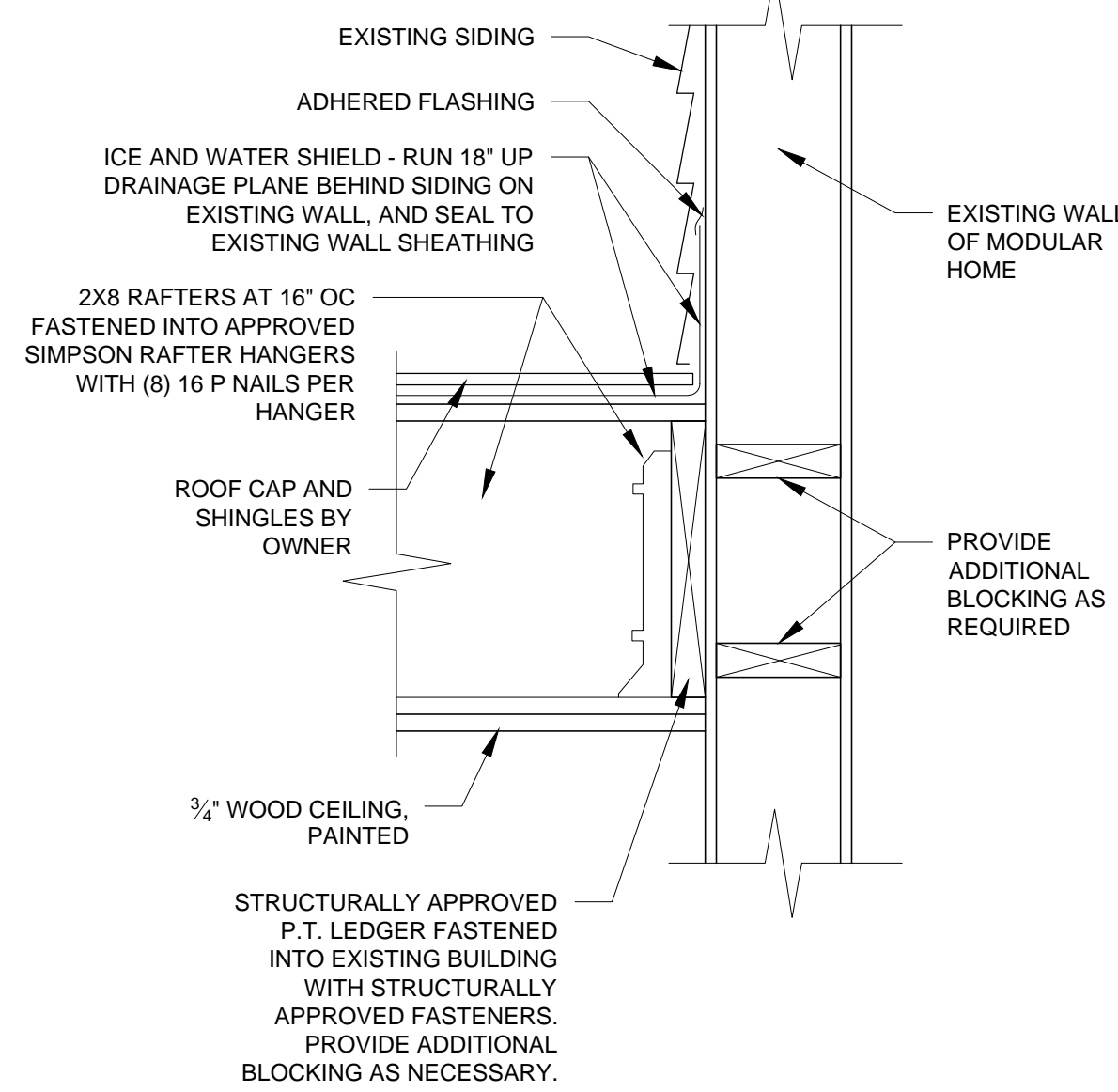
**LEDGER FASTENING PATTERN**



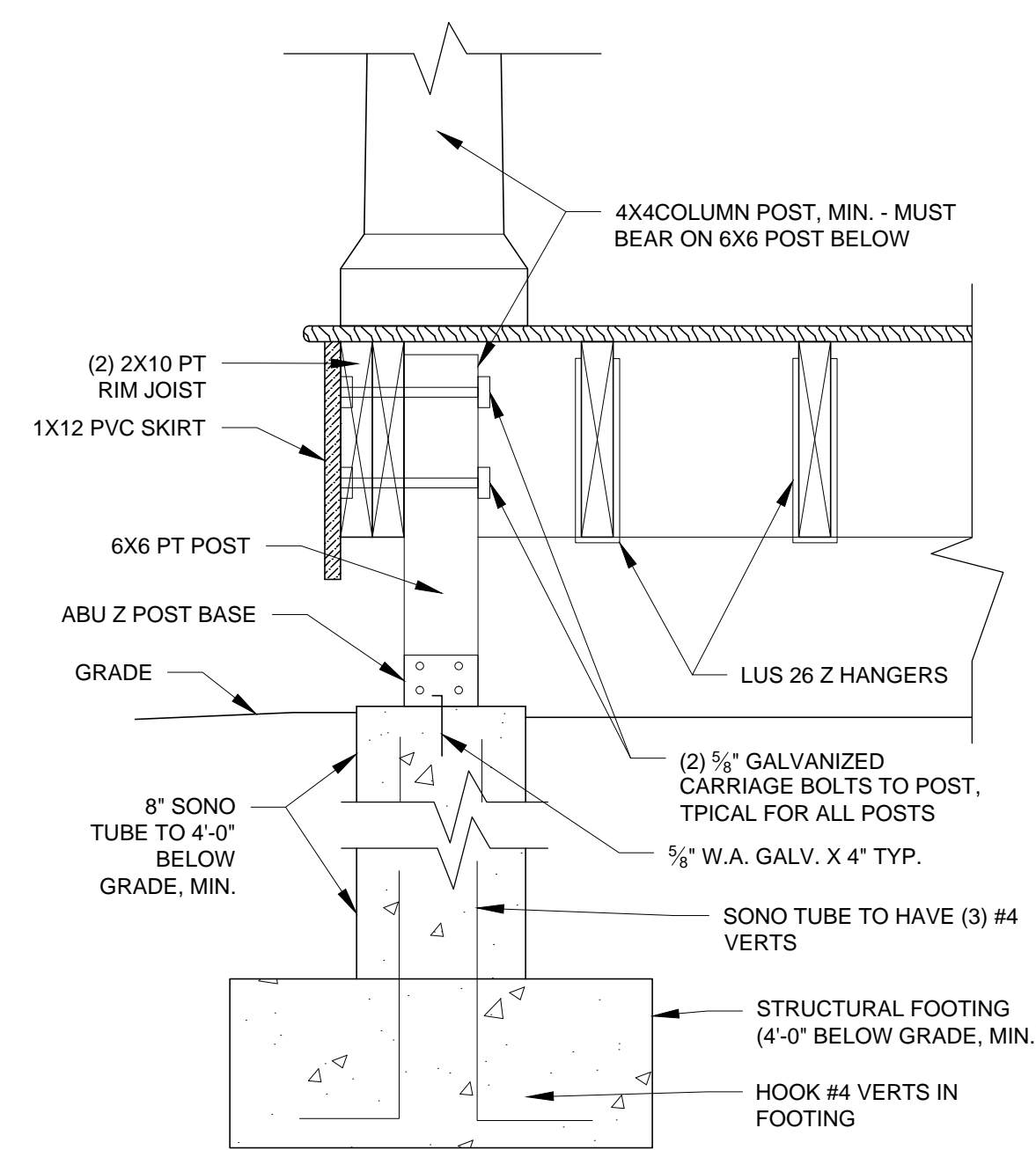
**7 TYPICAL ELEVATION OF LEDGER FASTENING PATTERN**  
1/12" = 1'-0" (WHEN PRINTED AT 24"X36")



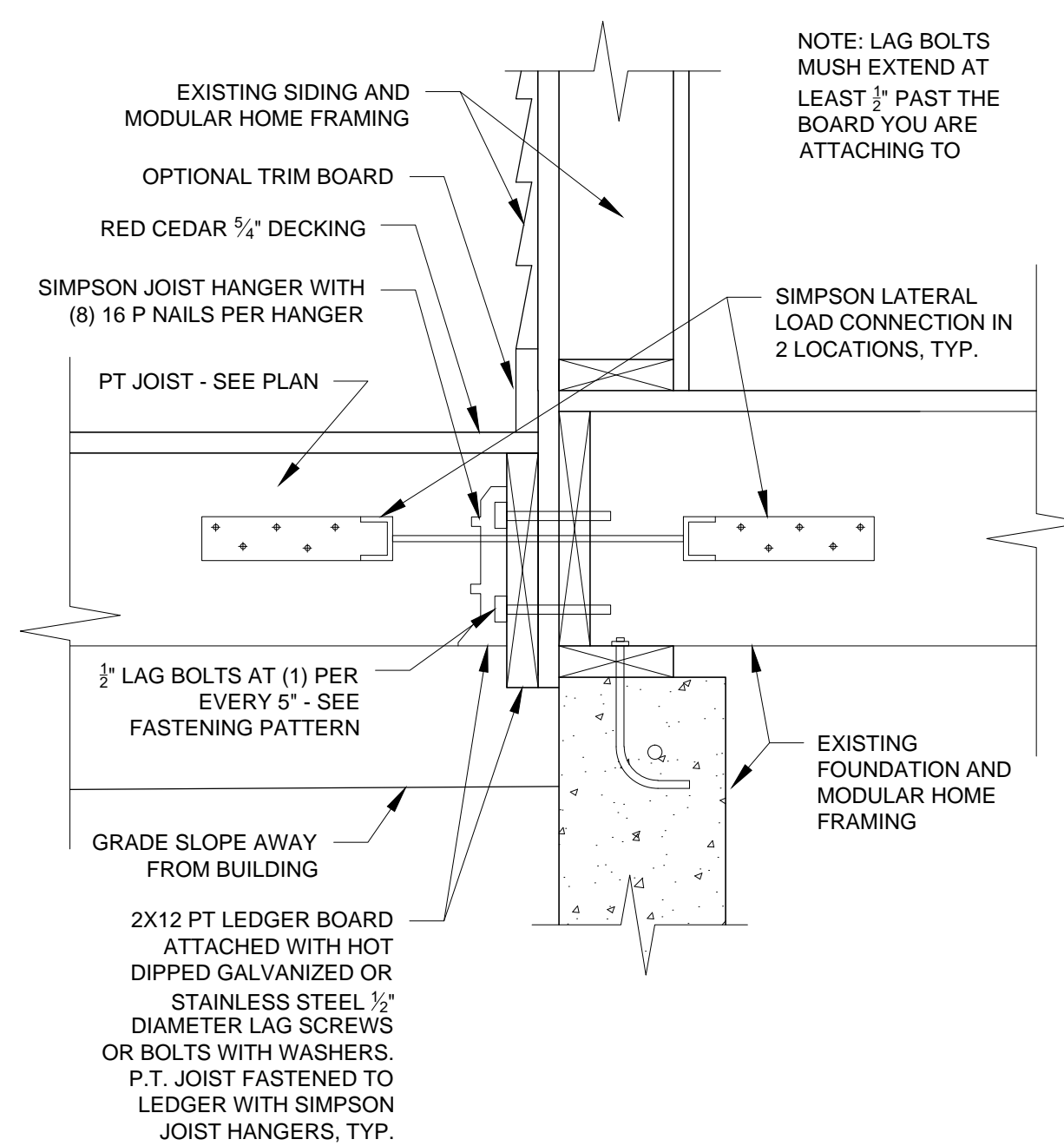
**3 SECTION DETAIL AT SOFFIT AND HEADER**  
1/12" = 1'-0" (WHEN PRINTED AT 24"X36")



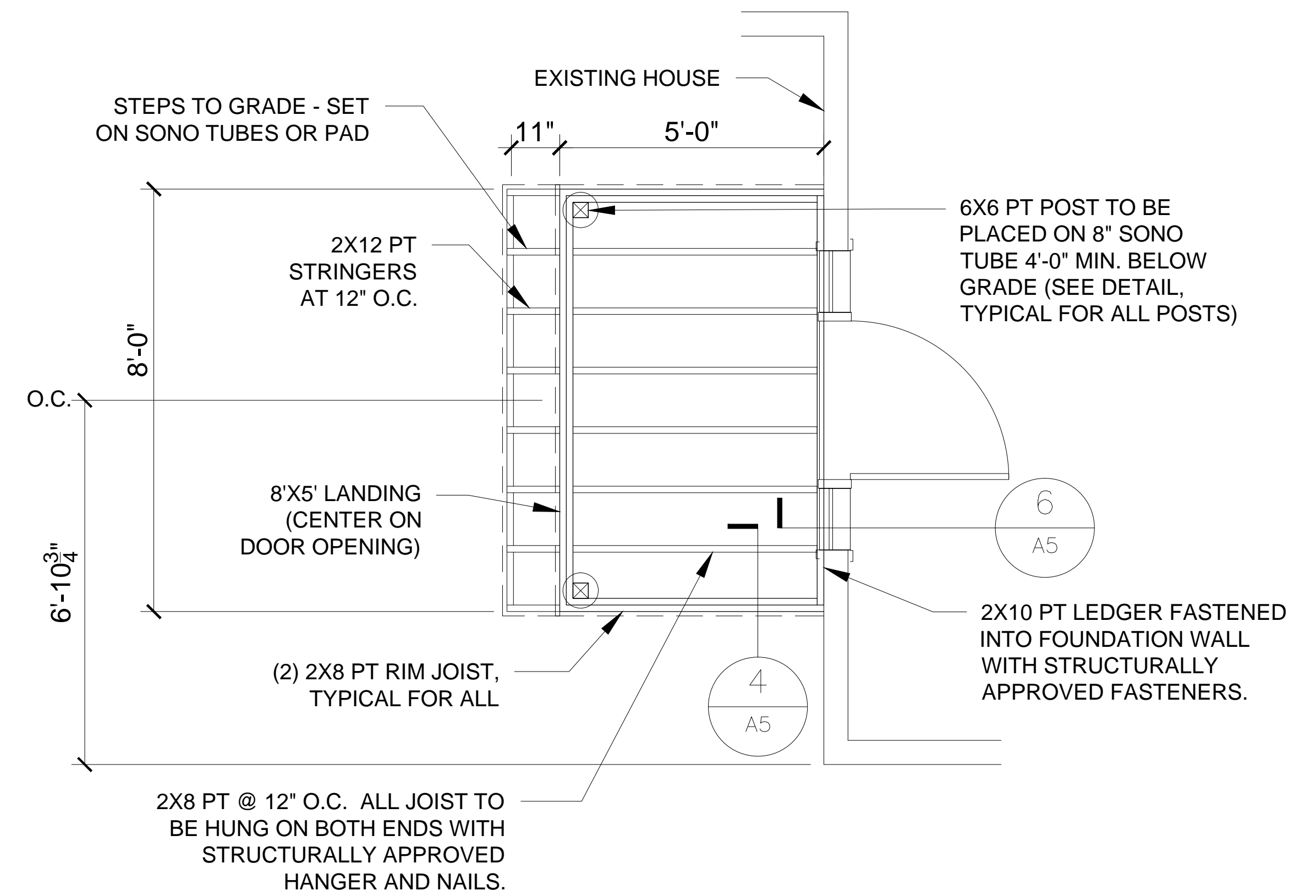
**5 SECTION DETAIL AT PORCH ROOF INTERSECTION WITH EXISTING SIDING**  
1/12" = 1'-0" (WHEN PRINTED AT 24"X36")



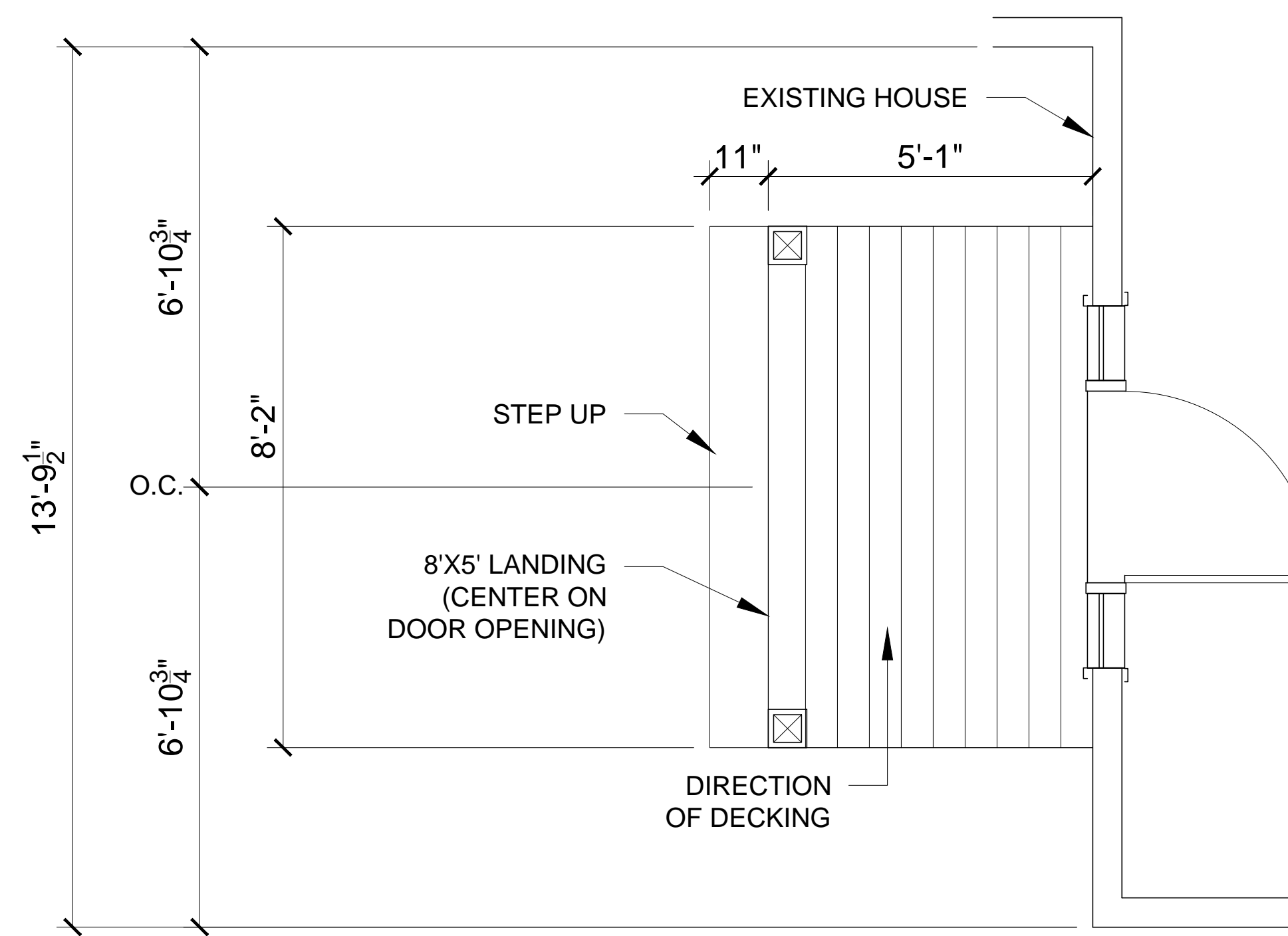
**4 SECTION DETAIL AT PORCH FOUNDATION AND FRAMING**  
1/12" = 1'-0" (WHEN PRINTED AT 24"X36")



**6 SECTION DETAIL AT PORCH FRAMING INTO EXISTING RIM JOIST**  
1/12" = 1'-0" (WHEN PRINTED AT 24"X36")



**1 FRONT PORCH FRAMING PLAN**  
1/12" = 1'-0" (WHEN PRINTED AT 24"X36")



**2 FRONT PORCH PLAN**  
1/12" = 1'-0" (WHEN PRINTED AT 24"X36")

**PROGRESS PRINT  
NOT FOR CONSTRUCTION**