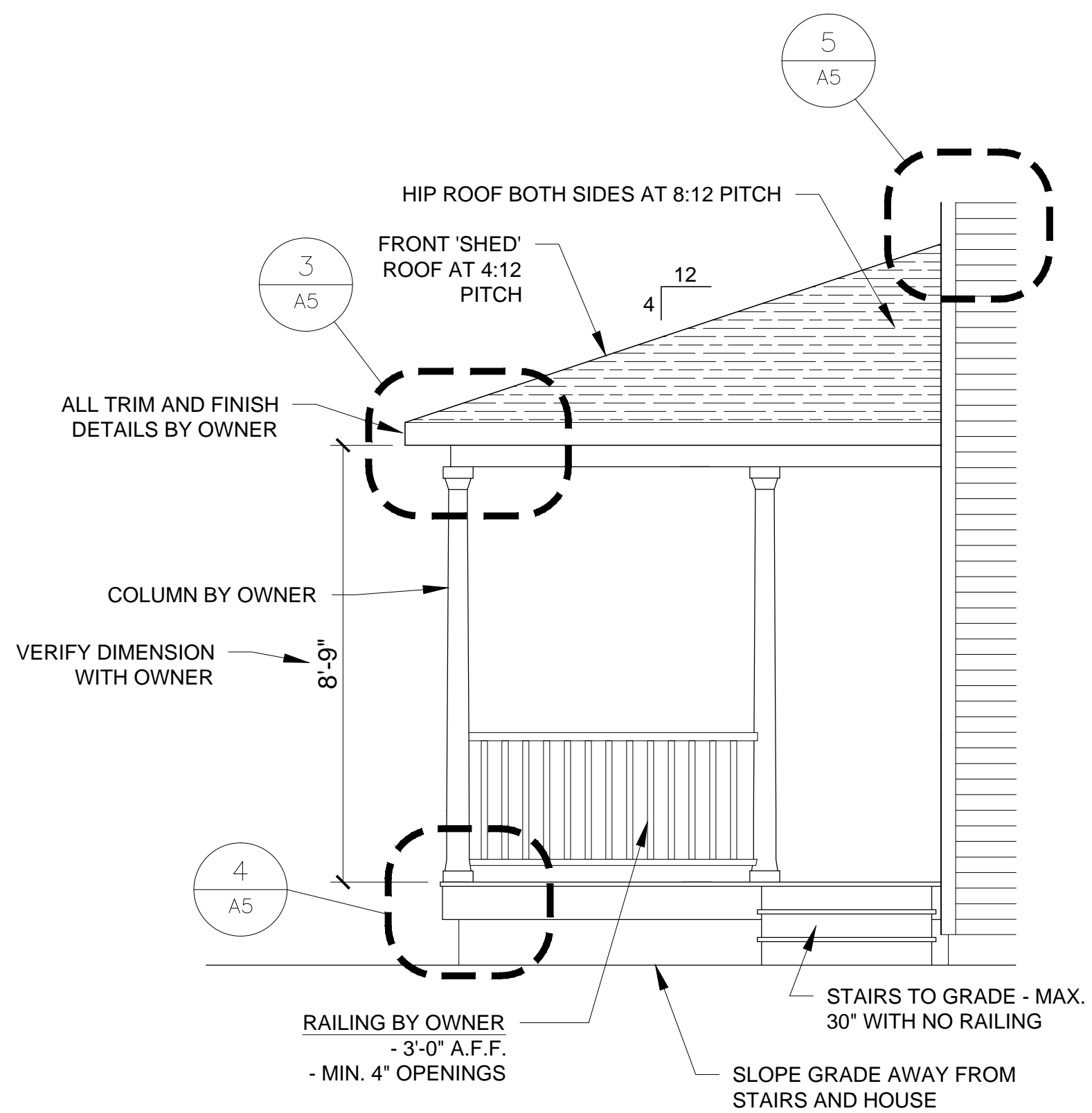
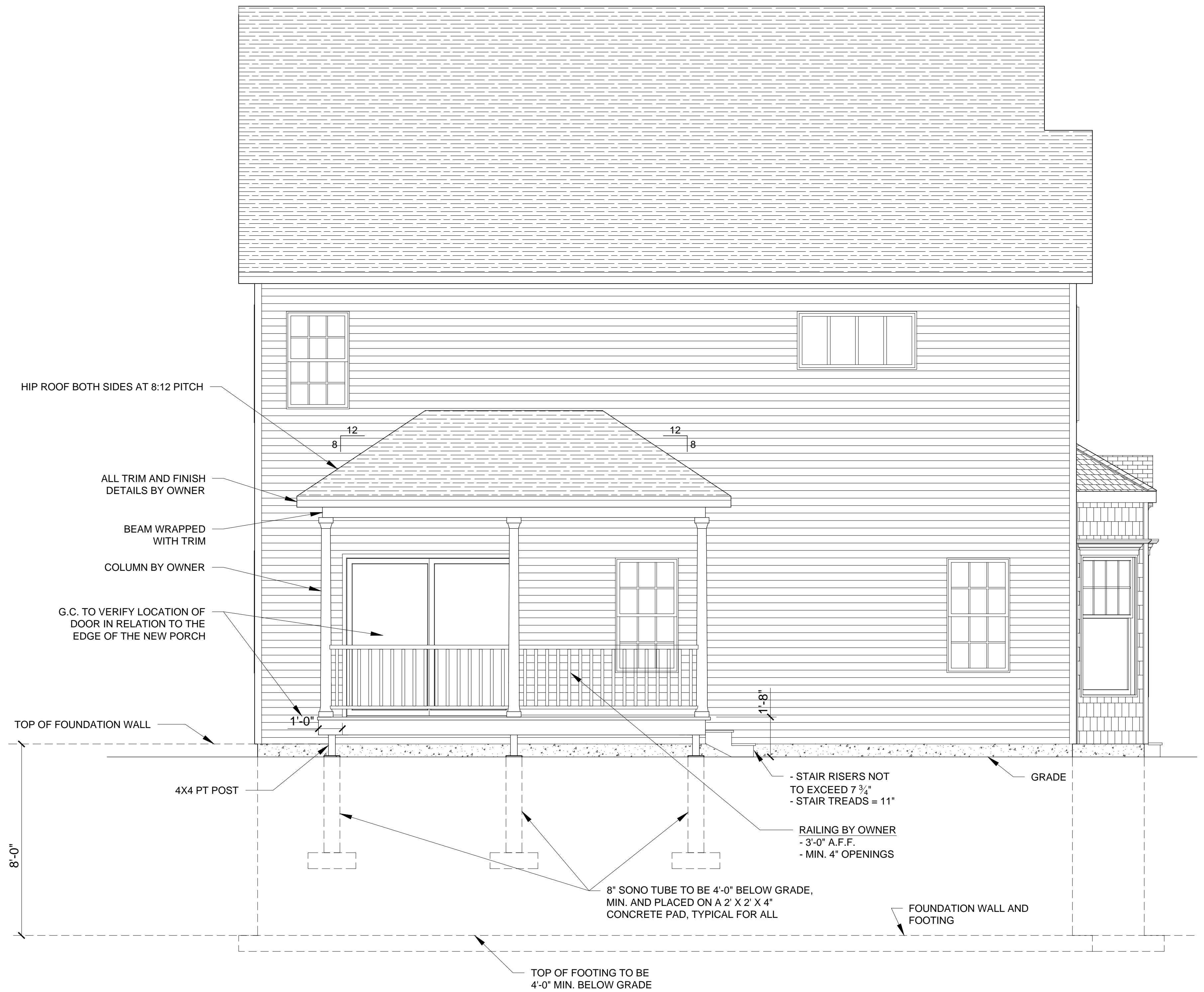


2 FRONT PORCH ELEVATION
3/8" = 1'-0" (WHEN PRINTED AT 24"X36")



3 SIDE PORCH ELEVATION
3/8" = 1'-0" (WHEN PRINTED AT 24"X36")



1 SIDE PORCH ELEVATION
3/8" = 1'-0" (WHEN PRINTED AT 24"X36")

PROGRESS PRINT
NOT FOR CONSTRUCTION