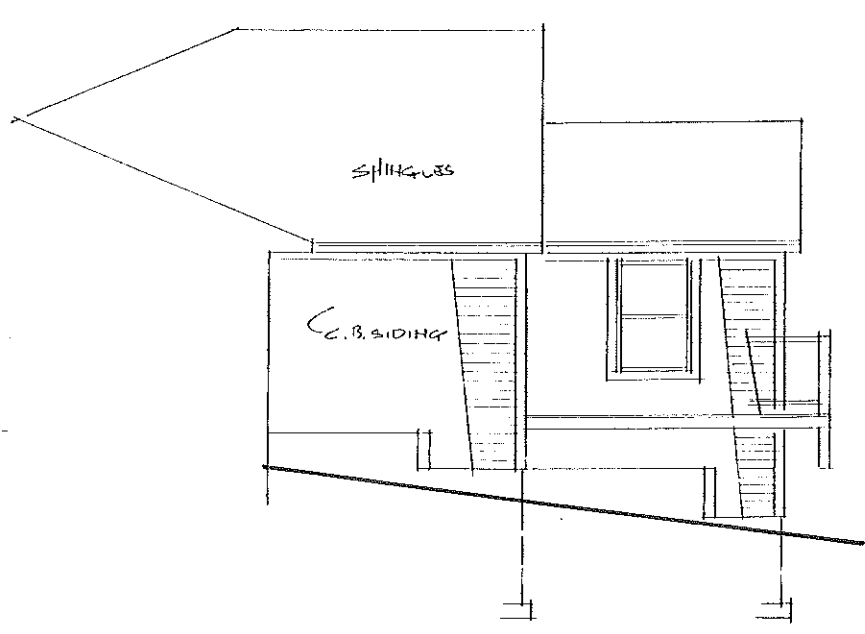
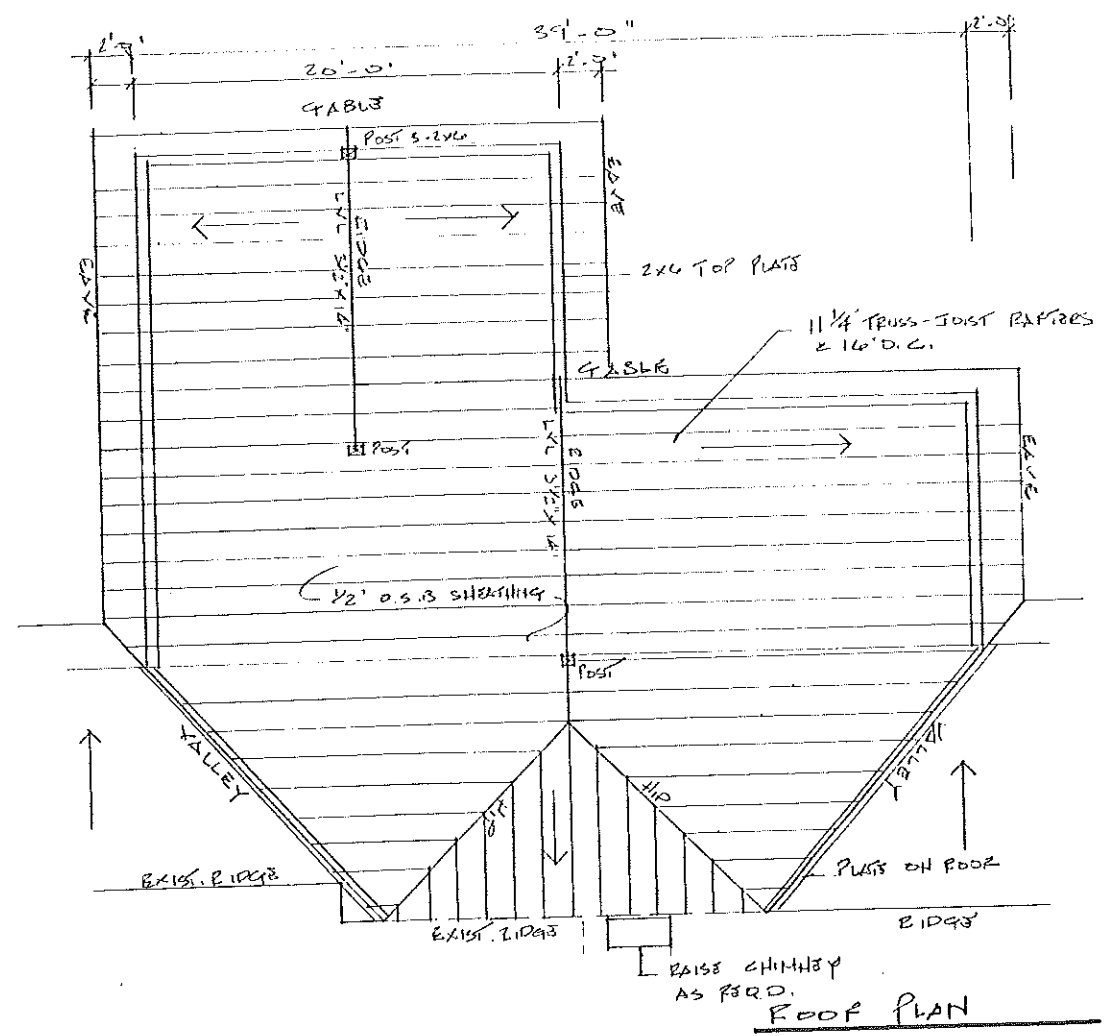


TABLE 1004.11 FASTENING SCHEDULE

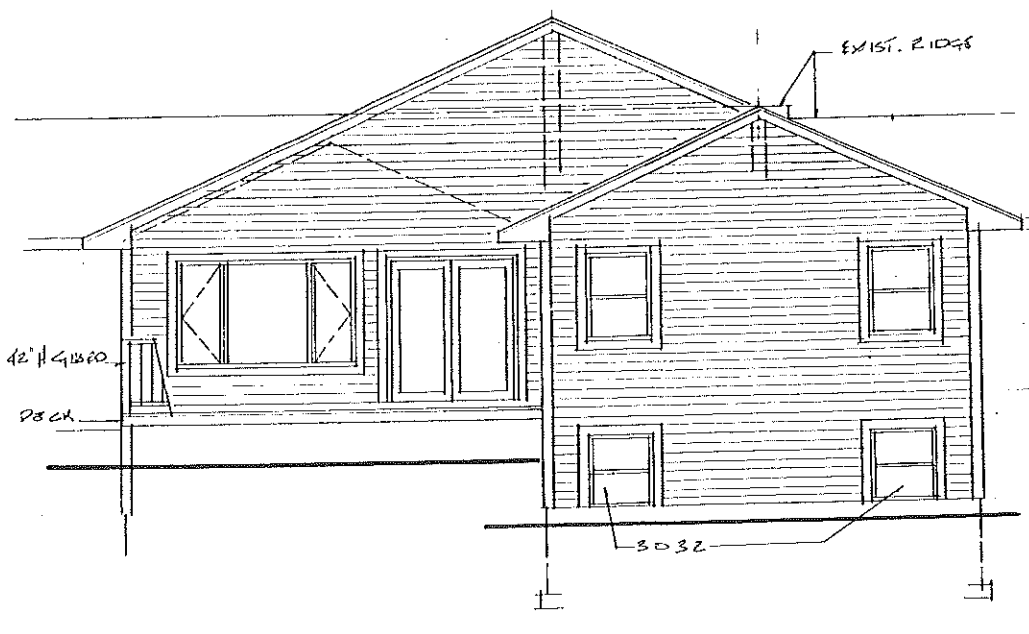
CONNECTION	FASTENING *	LOCATION
1. Stud to joist or girder	1-1/2" common 3-1/2" x 8-1/2" nail 3-1/2" x 14 gauge staple	ceiling
2. Blocking to joist	2-1/2" common 2-1/2" x 8-1/2" nail 3-1/2" x 14 gauge staple	ceiling
3. 1" x 4" subfloor to joist or girders	1-1/2" common 3-1/2" x 8-1/2" nail	floor
4. 1/2" thick floor joist to wall plate	1-1/2" common 3-1/2" x 8-1/2" nail	floor
5. 2" x 4" joist to girders	2-1/2" common 3-1/2" x 8-1/2" nail	ceiling
6. 2x4 plate to joist or blocking	1-1/2" common 3-1/2" x 8-1/2" nail 3-1/2" x 14 gauge staple	ceiling
7. 2x4 plate to joist or blocking at end	1-1/2" common 3-1/2" x 8-1/2" nail 3-1/2" x 14 gauge staple	ceiling
8. Stud to joist or girder	1-1/2" common 3-1/2" x 8-1/2" nail 3-1/2" x 14 gauge staple	ceiling

CONNECTION	FASTENING *	LOCATION
9. Double end	1-1/2" x 2" x 4" 3-1/2" x 8-1/2" nail 3-1/2" x 14 gauge staple	face end
10. Double top plate	1-1/2" x 2" x 4" 3-1/2" x 8-1/2" nail 3-1/2" x 14 gauge staple	top face end
Double top plate	1-1/2" x 2" x 4" 3-1/2" x 8-1/2" nail 3-1/2" x 14 gauge staple	top edge
11. Blocking between joist or rafters on top plate	1-1/2" common 3-1/2" x 8-1/2" nail 3-1/2" x 14 gauge staple	ceiling
12. Run joist to top plate	1-1/2" x 2" x 4" 3-1/2" x 8-1/2" nail 3-1/2" x 14 gauge staple	ceiling
13. Top plate, joist and intermediate	2-1/2" common 3-1/2" x 8-1/2" nail 3-1/2" x 14 gauge staple	ceiling
14. Continuous header over joist	1-1/2" common 3-1/2" x 8-1/2" nail 3-1/2" x 14 gauge staple	ceiling
15. Ceiling joist to plate	1-1/2" common 3-1/2" x 8-1/2" nail 3-1/2" x 14 gauge staple	ceiling
16. Continuous header to stud	1-1/2" common 3-1/2" x 8-1/2" nail 3-1/2" x 14 gauge staple	ceiling
17. Ceiling joist, top or bottom (See Section 2104.11.1, Table 2104.11.1.1)	1-1/2" common 3-1/2" x 8-1/2" nail 3-1/2" x 14 gauge staple	ceiling
18. Ceiling joist to parallel rafters (See Section 2104.11.1, Table 2104.11.1.1)	1-1/2" common 3-1/2" x 8-1/2" nail 3-1/2" x 14 gauge staple	ceiling
19. Rafter to plate (See Section 2104.11.1, Table 2104.11.1.1)	1-1/2" common 3-1/2" x 8-1/2" nail 3-1/2" x 14 gauge staple	ceiling
20. 1" diagonal brace to end and plate	1-1/2" common 3-1/2" x 8-1/2" nail 3-1/2" x 14 gauge staple	ceiling
21. 1" x 4" sheathing to each bearing wall	1-1/2" common 3-1/2" x 8-1/2" nail	ceiling
22. 1/2" thick 1" x 4" sheathing to each bearing	1-1/2" common 3-1/2" x 8-1/2" nail	ceiling
23. Build-up corner stud	1-1/2" common 3-1/2" x 8-1/2" nail 3-1/2" x 14 gauge staple	2" x 4" 1" x 4" 1" x 4"

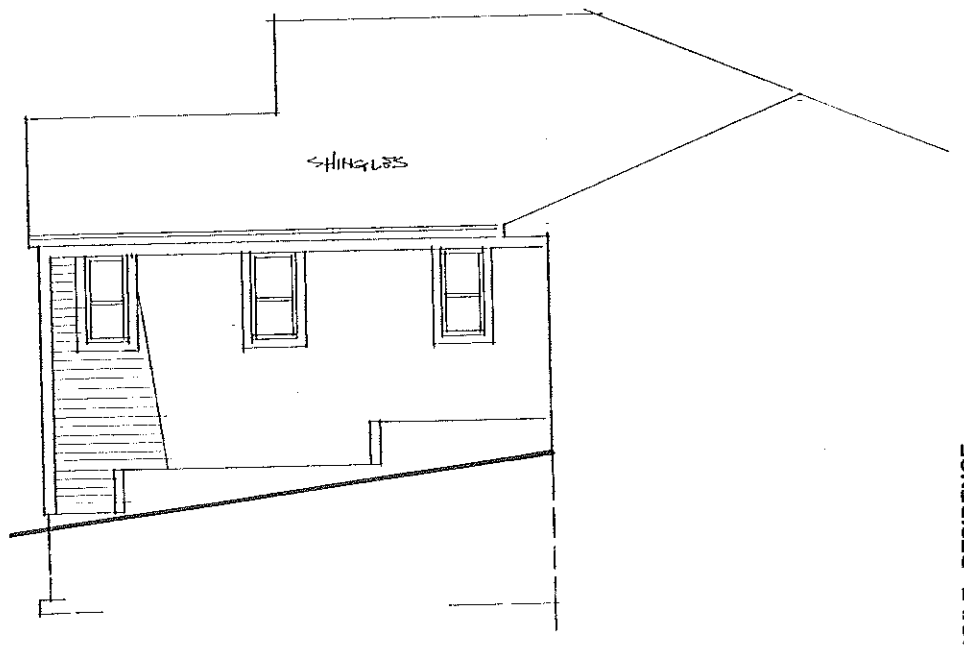
CONNECTION	FASTENING *	LOCATION
24. Pick-up girder and beam	2-1/2" common 4-1/2" x 8-1/2" nail 3-1/2" x 14 gauge staple	face end top and bottom edge of ceiling joist
25. 2" picks	1-1/2" common 3-1/2" x 8-1/2" nail	at each bearing
26. Ceiling to rafter	1-1/2" common 4-1/2" x 8-1/2" nail 3-1/2" x 14 gauge staple	face end
27. Joist to top	1-1/2" common 4-1/2" x 8-1/2" nail 3-1/2" x 14 gauge staple	ceiling
28. Joist to top 2 by 4 edge beam	1-1/2" common 4-1/2" x 8-1/2" nail 3-1/2" x 14 gauge staple	ceiling
29. Joist to roof joist	1-1/2" common 4-1/2" x 8-1/2" nail 3-1/2" x 14 gauge staple	ceiling
30. Ledger end	1-1/2" common 4-1/2" x 8-1/2" nail 3-1/2" x 14 gauge staple	face end
31. Wood structural joist and parallel joist Section 2104.11.1.1, Table 2104.11.1.1	1-1/2" x 2" x 4" 3-1/2" x 8-1/2" nail 3-1/2" x 14 gauge staple	ceiling
32. Parallel joist to joist	1-1/2" x 2" x 4" 3-1/2" x 8-1/2" nail 3-1/2" x 14 gauge staple	ceiling
33. Floorboard sheathing	1-1/2" x 2" x 4" 3-1/2" x 8-1/2" nail 3-1/2" x 14 gauge staple	ceiling
34. Rafter purlin	1-1/2" x 2" x 4" 3-1/2" x 8-1/2" nail 3-1/2" x 14 gauge staple	ceiling



LEFT ELEVATION



REAR ELEVATION
1/4" = 1'-0"



RIGHT ELEVATION