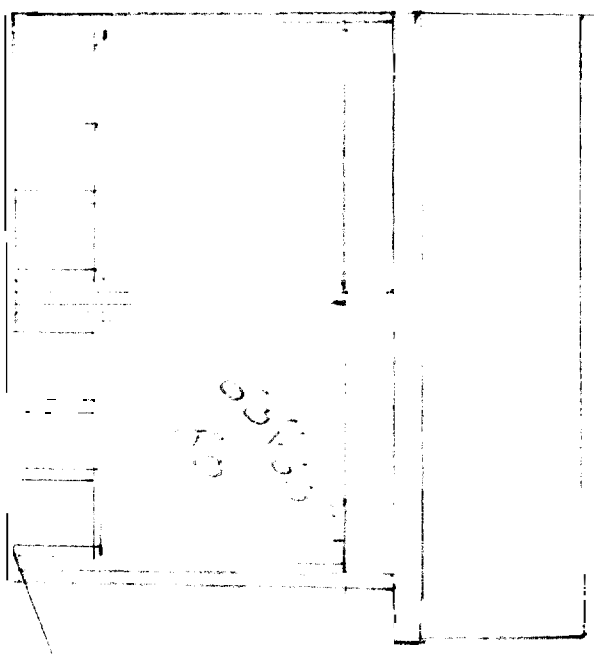


End View



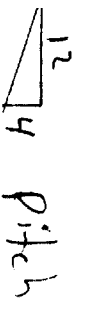
Same both ends

5/4" x 6" Composite Decking

T+G Pine Interior

Greg + Tracey DuLac Carter St. #26

Triple 1 3/4 x 1 1/8 LVL Ridge



12/4 Pitch

2" x 12" Rafters 13' span 16" oc

ice + water shield on entire roof
2x6 top plate x2

2x6 studs @ 16" oc

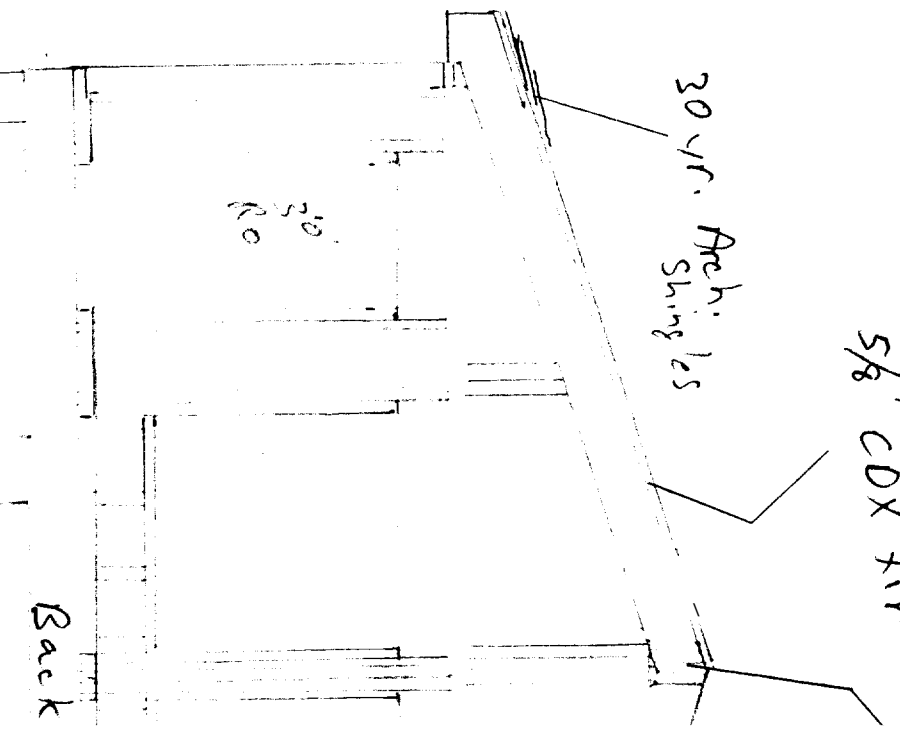
2-2x12 headers
7/16" OSB sheathing / vinyl siding.

2x6 bottom plate
2x12 PT Joist 16 oc

12" x 48" Soma tubes w/ anchor bolts + brackets

5/8" CDX fir

30 yr. Arch. Shingles



Back