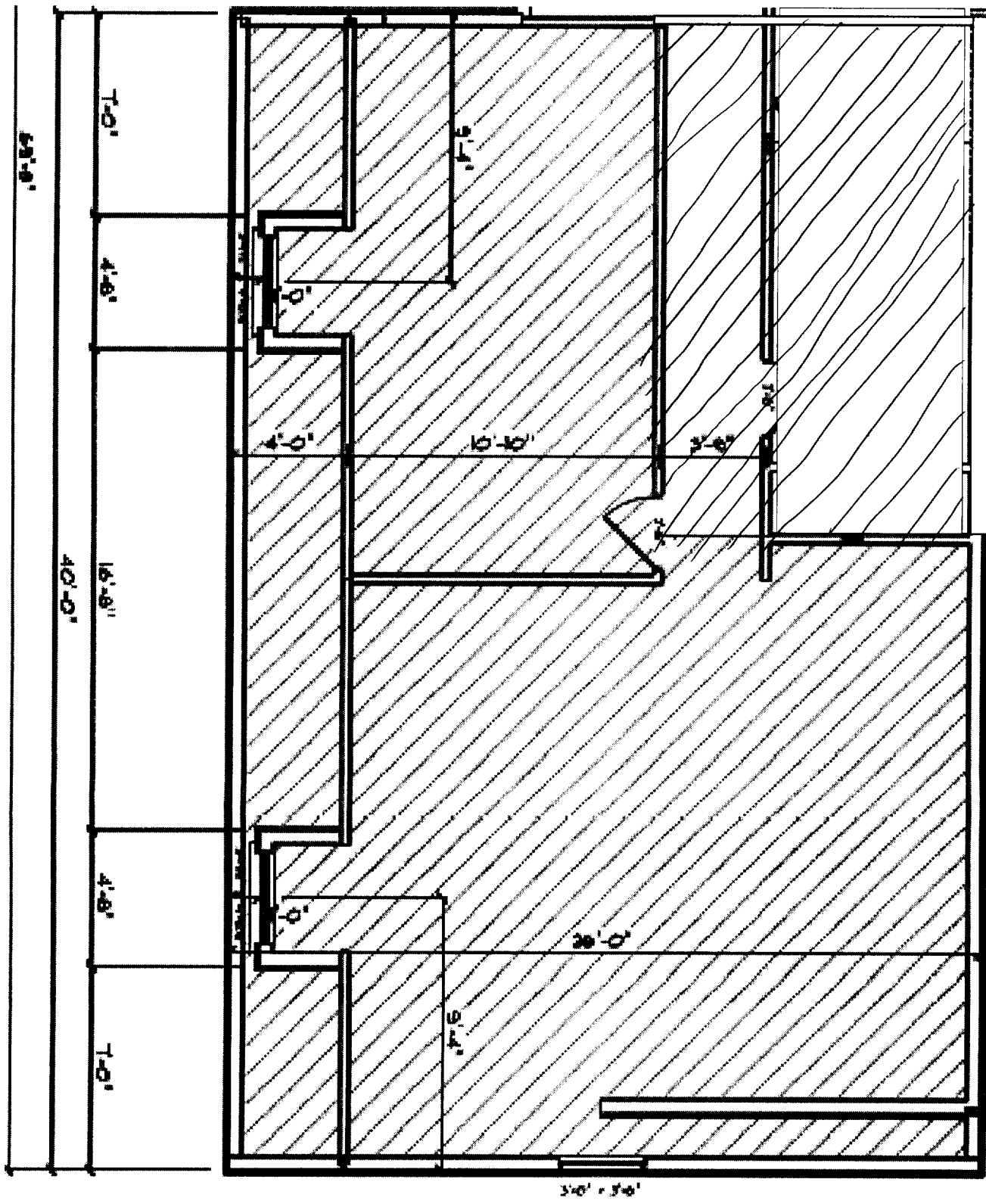


**FRONT ELEVATION**

2x6 16" OC  
Rafters and wall Framing



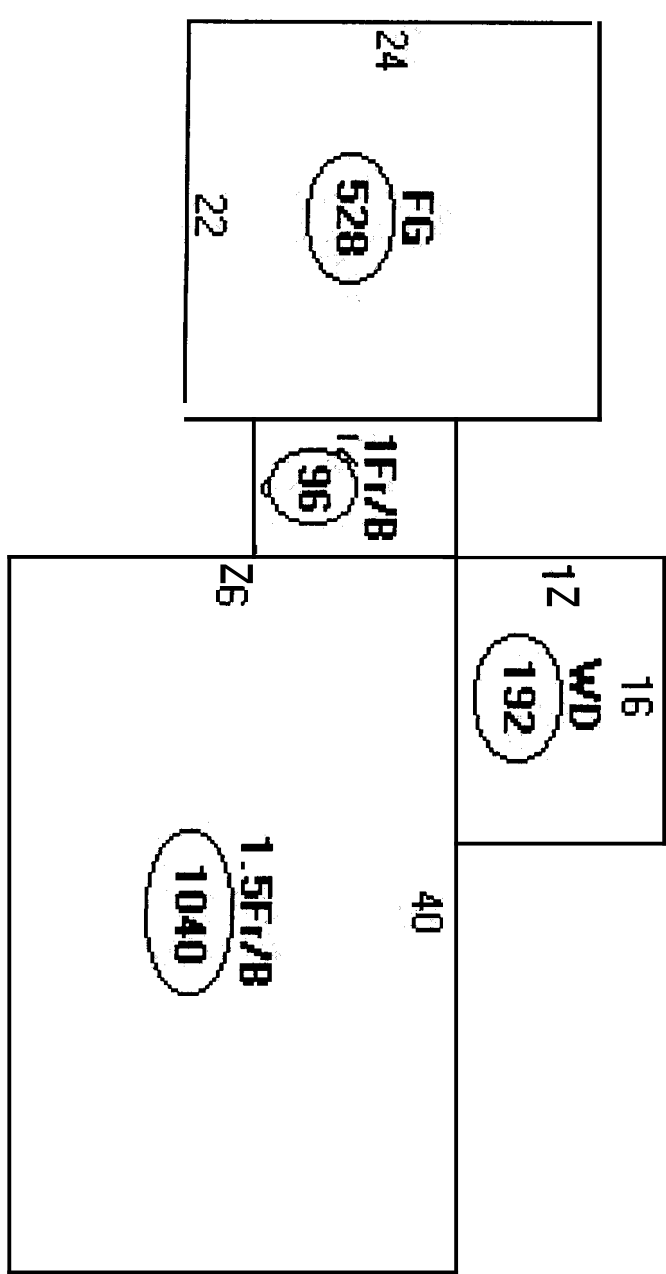
Descriptor/Area

A: 1.5Fr/B  
1040 sqft

Z: 1Fr/B  
96 sqft

C: FG  
528 sqft

D: W/D  
192 sqft



# FASTENING SCHEDULE (SEE TABLE 2304.9.1 N.Y.S. RESIDENTIAL CONSTRUCTION CODE FOR COMPLETE DETAILS)

(SEE NOTES A + M FOR ALL FASTENING NOTES)

CONNECTION	FASTENING	LOCATION	NOTES
JOIST TO SILL OR GIRDER	3 - 16D COMMON 3 - 3x13 1/2" NAIL 3 - 5" 14 GAUGE STAPLE	TOENAIL	
BRIDGING TO JOIST	3 - 16D COMMON 3 - 3x13 1/2" NAIL 3 - 5" 14 GAUGE STAPLE	TOENAIL EACH END	
SOLE PLATE TO JOIST OR BLOCKING	16D @ 18" OC 3 - 3x13 1/2" NAIL @ 8" OC 5" 14 GAUGE STAPLE @ 12" OC	TYPICAL FACE NAIL	
SOLE PLATE TO JOIST OR BLOCKING AT BRACED WALL PANEL	16D @ 18" OC 3 - 3x13 1/2" NAIL @ 16" OC 5" 14 GAUGE STAPLE @ 12" OC	BRACED WALL PANEL	
TOP PLATE TO STUD	2 - 16D COMMON 3 - 3x13 1/2" NAIL 3 - 5" 14 GAUGE STAPLE	END NAIL	
STUD TO SOLE PLATE	4 - 3x13 1/2" NAIL 3 - 5" 14 GAUGE STAPLE 2 - 16D COMMON 3 - 3x13 1/2" NAIL 3 - 5" 14 GAUGE STAPLE	TOE NAIL	
DOUBLE STUDS	16D @ 24" OC 3 - 3x13 1/2" NAIL @ 8" OC 5" 14 GAUGE STAPLE @ 8" OC	FACE NAIL	
DOUBLE TOP PLATES	16D @ 18" OC 3 - 3x13 1/2" NAIL @ 12" OC 5" 14 GAUGE STAPLE @ 12" OC	TYPICAL FACE NAIL	
DOUBLE TOP PLATES	8 - 16D COMMON 12 - 3x13 1/2" NAIL 12 - 5" 14 GAUGE STAPLE TYP. FACE NAIL	LAP SPICE	
BLOCKING BETWEEN JOISTS OR RAFTERS TO TOP PLATE	3 - 16D COMMON 3 - 3x13 1/2" NAIL 3 - 5" 14 GAUGE STAPLE	TOE NAIL	
RIM JOIST TO TOP PLATE	16D @ 5" OC 3 - 3x13 1/2" NAIL @ 5" OC 5" 14 GAUGE STAPLE @ 5" OC	TOE NAIL	
TOP PLATES, LAPS AND INTERSECTIONS	2 - 16D COMMON 3 - 3x13 1/2" NAIL 3 - 5" 14 GAUGE STAPLE	FACE NAIL	
CONTINUOUS HEADS, 2 PCS.	16D COMMON 3 - 16D COMMON 5 - 3x13 1/2" NAIL 5 - 5" 14 GAUGE STAPLE	18" OC ALONG EDGE TOE NAIL	
CEILING JOISTS TO PLATE	3 - 16D COMMON 4 - 3x13 1/2" NAIL 5 - 5" 14 GAUGE STAPLE	TOE NAIL	
CONTINUOUS HEADER TO STUD	3 - 16D COMMON 4 - 3x13 1/2" NAIL 4 - 5" 14 GAUGE STAPLE	FACE NAIL	
CEILING JOISTS, LAPS OVER PARTITIONS (SEE SECT. 2308.10.4.1, TABLE 2308.10.4.1)	3 - 16D COMMON MINIMUM 4 - 3x13 1/2" NAIL 4 - 5" 14 GAUGE STAPLE	FACE NAIL	COMMON NAIL - REF TO TABLE 2308.10.4.1
CEILING JOISTS TO PARALLEL RAFTERS (SEE SECT. 2308.10.4.1, TABLE 2308.10.4.1)	3 - 16D COMMON MINIMUM 4 - 3x13 1/2" NAIL 4 - 5" 14 GAUGE STAPLE	FACE NAIL	COMMON NAIL - REF TO TABLE 2308.10.4.1

CONNECTION	FASTENING	LOCATION	NOTES
RAFTER TO PLATE (SEE SECT. 2308.10.1, TABLE 2308.10.1)	3 - 8d COMMON 3 - 3x13 1/2" NAIL 3 - 5" 14 GAUGE STAPLE	TOENAIL	
1" DIAGONAL BRACE TO EACH STUD & PLATE	2 - 8d COMMON 2 - 3x9 1/2" NAIL 2 - 5" 14 GAUGE STAPLE	FACE NAIL	
BUILT-UP CORNER STUDS	16D COMMON 3 - 3x13 1/2" NAIL 3" 14 GAUGE STRAPLE	2x4" OC 16" OC 18" OC	
BUILT-UP GIRDER & BEAMS	20d COMMON 3x4" OC 3 - 3x13 1/2" NAIL @ 24" OC 5" 14 GAUGE STAPLE @ 24" OC	FACE NAIL AT TOP & BOTTOM STAGGERED ON OPPOSITE SIDES	
BUILT-UP GIRDER & BEAMS	2 - 20d COMMON 3 - 3x13 1/2" NAIL 3 - 5" 14 GAUGE STAPLE	FACE NAIL AT ENDS AT EACH SPICE	
BUILT-UP GIRDER & BEAMS	3 - 10d COMMON 4 - 3x9 1/2" NAIL 4 - 5" 14 GAUGE STAPLE	FACE NAIL	
COLLAR TIE TO RAFTER	4 - 3" 14 GAUGE STAPLE 3 - 10d COMMON	FACE NAIL	
JACK RAFTERS TO HIP	3 - 10d COMMON 4 - 3x9 1/2" NAIL 4 - 5" 14 GAUGE STAPLE	TOE NAIL	
JACK RAFTERS TO HIP	2 - 10d COMMON 3 - 3x9 1/2" NAIL 3 - 5" 14 GAUGE STAPLE	FACE NAIL	
JACK RAFTERS TO HIP	2 - 10d COMMON 3 - 3x9 1/2" NAIL 3 - 5" 14 GAUGE STAPLE	FACE NAIL	
ROOF RAFTER TO 2x6 RIDGE BEAM	2 - 16d COMMON 3 - 3x13 1/2" NAIL 3 - 5" 14 GAUGE STAPLE	TOENAIL	
ROOF RAFTER TO 2x6 RIDGE BEAM	2 - 16d COMMON 3 - 3x9 1/2" NAIL 3 - 5" 14 GAUGE STAPLE	FACE NAIL	
JOIST TO BAND JOIST	3 - 16d COMMON 5 - 3x9 1/2" NAIL 5 - 5" 14 GAUGE STAPLE	FACE NAIL	
LEDGER STRIP	3 - 16d COMMON 4 - 3x9 1/2" NAIL 4 - 5" 14 GAUGE STAPLE	FACE NAIL	
1/2" OR LESS WOOD STRUCTURAL PANELS & PARTICLE BOARD	2-3/8" x 1 1/2" NAIL 1 3/4" 16 GAUGE		SEE NOTE: C, J SEE NOTE: N SEE NOTE: O SEE NOTE: P
WOOD STRUCTURAL PANELS & PARTICLE BOARD 1/2" OR LESS	6d OR 8d 2-3/8" x 1 1/2" NAIL 2" 16 GAUGE		2d. SEE NOTE: O, 6d. SEE NOTE: C SEE NOTE: N SEE NOTE: P
SINGLE FLOOR (CONCRETE OR SLAB-FLOOR-UNDER-FRAMING) (1/2" OR LESS)	3d		SEE NOTE: F
PANEL SIDING (TO FRAMING)	8d		SEE NOTE: F
PANEL SIDING (TO FRAMING)	8d		SEE NOTE: F

- LETTER: A** COMMON BOX NAILS ARE PERMITTED TO BE USED EXCEPT WHERE OTHERWISE INDICATED.
- LETTER: B** NAILS SPACED AT 6 INCHES ON CENTER AT EDGES, 12 INCHES AT INTERMEDIATE SUPPORTS EXCEPT AT SUPPORTS WHERE SPANS ARE 48 INCHES OR MORE. FOR WALLS OF WOOD STRUCTURAL PANEL AND PARTICLEBOARD DIAGRAMS AND SHEAR WALLS, REFER TO SECTION 2305. NAILS FOR WALL SHEATHING ARE PERMITTED TO BE COMMON, BOX OR CASING.
- LETTER: C** COMMON OR DEFORMED SHANK
- LETTER: D** COMMON
- LETTER: E** DEFORMED SHANK
- LETTER: F** CORROSION-RESISTANT SINKING OR CASING NAIL
- LETTER: G** FASTENERS SPACED 3 INCHES OC AT EXTERIOR EDGES AND 6 INCHES OC AT INTERMEDIATE SUPPORTS.
- LETTER: H** CORROSION-RESISTANT ROOFING NAILS WITH 7/16 INCH DIA. HEAD & 1-1/2 INCH LENGTH
- LETTER: I** FOR 1/2 INCH SHEATHING & 1-3/4 INCH LENGTH FOR 5/8 INCH SHEATHING
- LETTER: J** CORROSION-RESISTANT STAPLES WITH NOMINAL 7/16 INCH CROWN AND 1-1/8 INCH LENGTH FOR 1/2 INCH SHEATHING AND 1-1/2 INCH LENGTH FOR 5/8 INCH SHEATHING. PANEL SUPPORTS AT 16 INCHES (20 INCHES IF STRENGTH AXIS IN THE LONG DIRECTION OF THE PANEL, UNLESS OTHERWISE MARKED).
- LETTER: K** CASING OR FINISH NAILS SPACED 6 INCHES ON PANEL EDGES, 12 INCHES AT INTERMEDIATE SUPPORTS.
- LETTER: L** PANEL SUPPORTS AT 24 INCHES. CASING OR FINISH NAILS SPACED 8 INCHES ON PANEL EDGES, 12 INCHES AT INTERMEDIATE SUPPORTS.
- LETTER: M** STAPLES SHALL HAVE A MINIMUM CROWN WIDTH OF 7/16 INCH.
- LETTER: N** FOR ROOF SHEATHING APPLICATIONS, FASTENERS SPACED 4 INCHES ON CENTER AT EDGES, 8 INCHES AT INTERMEDIATE SUPPORTS.
- LETTER: O** FASTENERS SPACED 4 INCHES OC AT EDGES, 8 INCHES AT INTERMEDIATE SUPPORTS FOR ROOF SHEATHING AND WALL SHEATHING AND 3 INCHES OC AT EDGES, 5 INCHES AT INTERMEDIATE SUPPORTS FOR ROOF SHEATHING.
- LETTER: P** FASTENERS SPACED 4 INCHES OC AT EDGES, 8 INCHES AT INTERMEDIATE

Plot Plan

