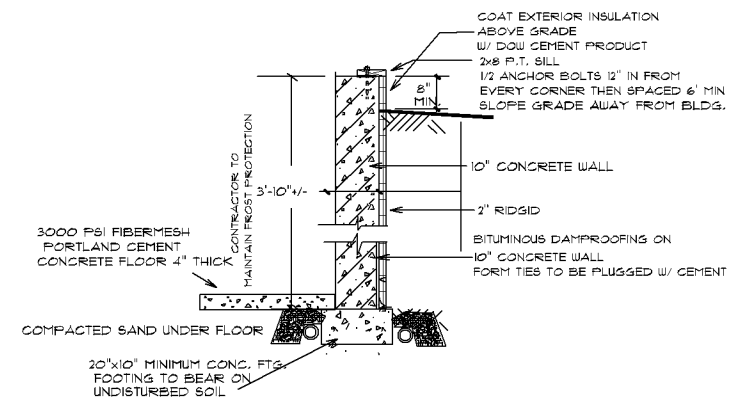


TYPICAL RAFTER TRIM DETAIL



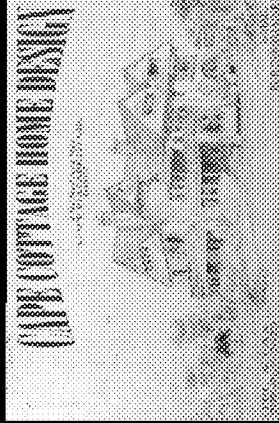
TYPICAL FROSTWALL SECTION - PARTIAL DAYLIGHT

FASTENERS SPACED 4 INCHES OC AT EDGES, 8 INCHES AT INTERMEDIATE WALL SHEATHING AND 3 INCHES OC AT EDGES, 5 INCHES AT INTERMEDIATE SUPPORTS FOR ROOF SHEATHING. FASTENERS SPACED 4 INCHES OC AT EDGES, 8 INCHES AT INTERMEDIATE SUPPORTS FOR SUBFLOOR AND ROOF SHEATHING APPLICATIONS, FASTENERS SPACED 4 INCHES ON CENTER AT EDGES, 8 INCHES AT INTERMEDIATE SUPPORTS. STAPLES SHALL HAVE A MINIMUM CROWN WIDTH OF 7/16 INCH. FOR ROOF SHEATHING APPLICATIONS, 8# NAILS ARE MINIMUM REQUIRED FOR WOOD STRUCTURAL PANELS. PANEL SUPPORTS AT 24 INCHES. CASING OR FINISH NAILS SPACED 6 INCHES ON PANEL EDGES, 12 INCHES AT INTERMEDIATE SUPPORTS. CASING OR FINISH NAILS SPACED 9 INCHES ON PANEL EDGES, 12 INCHES AT INTERMEDIATE SUPPORTS. 16 INCHES (20 INCHES IF STRENGTH AXIS IN THE LONG DIRECTION OF THE PANEL, UNLESS OTHERWISE MARKED). 1/2 INCH SHEATHING AND 1-1/2 INCH LENGTH FOR 25/32 INCH SHEATHING. PANEL SUPPORTS AT CORROSION-RESISTANT STAPLES WITH NOMINAL 7/16 INCH CROWN AND 1-1/8 INCH LENGTH FOR

FOR 1/2 INCH SHEATHING & 1-3/4 INCH LENGTH FOR 25/32 INCH SHEATHING CORROSION-RESISTANT ROOFING NAILS #7 7/16 INCH DIA. HEAD & 1-1/2 INCH LENGTH FASTENERS SPACED 3 INCHES OC AT EXTERIOR EDGES AND 6 INCHES OC AT INTERMEDIATE SUPPORTS. CORROSION-RESISTANT SIDING OR CASING NAIL DEFORMED SHANK COMMON OR DEFORMED SHANK WALLS. REFER TO SECTION 2305. NAILS FOR WALL SHEATHING ARE PERMITTED TO BE COMMON BOX OR CASING SPANS ARE 48 INCHES OR MORE. FOR NAILING OF WOOD STRUCTURAL PANEL AND PARTICLEBOARD DIAGRAMMS AND SHEAR NAILS SPACED AT 9 INCHES ON CENTER AT EDGES, 12 INCHES AT INTERMEDIATE SUPPORTS EXCEPT AT SUPPORTS WHERE COMMON BOX NAILS ARE PERMITTED TO BE USED EXCEPT WHERE OTHERWISE INDICATED

SEE NOTE: F	9d	PANEL SIDING (TO FRAMING) 5/8"	COMMON NAIL - REF TO TABLE 2308.10.4.1	FACE NAIL	4 - 3" 14 GAGE STAPLE 4 - 3"x0.131" NAIL 3 - 16d COMMON MINIMUM	(SEE SECT. 2308.10.4.1, TABLE 2308.10.4.1) CEILING JOISTS TO PARALLEL RAFTERS
SEE NOTE: F	9d	PANEL SIDING (TO FRAMING) 1/2" OR LESS	COMMON NAIL - REF TO TABLE 2308.10.4.1	FACE NAIL	4 - 3" 14 GAGE STAPLE 4 - 3"x0.131" NAIL 3 - 16d COMMON MIN.	(SEE SECT. 2308.10.4.1, TABLE 2308.10.4.1) CEILING JOISTS, LAPS OVER PARTITIONS
SEE NOTE: C	9d	SUBFLOOR UNDERLAYMENT SINGLE FLOOR (COMBINATION 3/4" OR LESS		TOENAIL	5 - 3" 14 GAGE STAPLE 5 - 3"x0.131" NAIL 3 - 8d COMMON	CONTINUOUS HEADER TO STUD
SEE NOTE: P SEE NOTE: N 8d. SEE NOTE: D. 8d. SEE NOTE: C SEE NOTE: O SEE NOTE: N SEE NOTE: C, J	2" 16 GAGE 2-3/8"x0.113" NAIL 8d OR 16d 1-3/4" 16 GAGE 2-3/8"x0.113" NAIL 8d	8 PARTICLE BOARD WOOD STRUCTURAL PANELS 18"x2" - 3/4" 8 PARTICLE BOARD WOOD STRUCTURAL PANELS 1/2" OR LESS		TOE NAIL	5 - 3" 14 GAGE STAPLE 5 - 3"x0.131" NAIL 3 - 8d COMMON	CEILING JOISTS TO PLATE
	FACE NAIL	LEDGER STRIP		16" OC ALONG EDGE	3 - 3" 14 GAGE STAPLE 3 - 3"x0.131" NAIL 2 - 16d COMMON	CONTINUOUS HEADE, 2 PCS. AND INTERSECTIONS TOP PLATES, LAPS
	FACE NAIL	JOIST TO BAND JOIST		TOE NAIL	3" 14 GAGE STAPLE @ 8" OC 3"x0.131" NAIL @ 8" OC 8d @ 8" OC	RIM JOIST TO TOP PLATE
	FACE NAIL	2 BY RIDGE BEAM ROOF RAFTER TO		TOE NAIL	3 - 3" 14 GAGE STAPLE 3 - 3"x0.131" NAIL 3 - 8d COMMON	OR RAFTERS TO TOP PLATE BLOCKING BETWEEN JOISTS
	TOENAIL	2 BY RIDGE BEAM ROOF RAFTER TO		LAP SPLICE	12 - 3" 14 GAGE STAPLE TYP. FACE NAIL 12 - 3"x0.131" NAIL 8 - 16d COMMON	DOUBLE TOP PLATES
	FACE NAIL	JACK RAFTERS TO HIP		TYPICAL FACE NAIL	3" 14 GAGE STAPLE @ 12" OC 3"x0.131" NAIL @ 12" OC 16d @ 15" OC	DOUBLE TOP PLATES
	TOE NAIL	JACK RAFTERS TO HIP		FACE NAIL	3" 14 GAGE STAPLE @ 8" OC 3"x0.131" NAIL @ 8" OC 16d @ 24" OC	DOUBLE STUDS
	FACE NAIL	COLLAR TIE TO RAFTER		END NAIL	3 - 3" 14 GAGE STAPLE 3 - 3"x0.131" NAIL 2 - 16d COMMON	STUD TO SOLE PLATE
	AT EACH SPLICE FACE NAIL AT ENDS	BUILT-UP GIRDER & BEAMS		TOE NAIL	3 - 3" 14 GAGE STAPLE 3 - 3"x0.131" NAIL 2 - 16d COMMON	TOP PLATE TO STUD
	STAGGERED ON OPPOSITE SIDES FACE NAIL AT TOP & BOTTOM	BUILT-UP GIRDER & BEAMS		BRACED WALL PANEL	3" 14 GAGE STAPLE @ 12" OC 3"x0.131" NAIL @ 15" OC 16d @ 15" OC	AT BRACED WALL PANEL SOLE PLATE TO JOIST OR BLOCKING
15" OC 15" OC 24" OC	3" 14 GAGE STAPLE 3"x0.131" NAIL 16d COMMON	BUILT-UP CORNER STUDS		TYPICAL FACE NAIL	3" 14 GAGE STAPLE @ 12" OC 3"x0.131" NAIL @ 8" OC 16d @ 15" OC	OR BLOCKING SOLE PLATE TO JOIST
	FACE NAIL	EACH STUD & PLATE 1" DIAGONAL BRACE TO		TOENAIL EACH END	3 - 3" 14 GAGE STAPLE 3 - 3"x0.131" NAIL 3 - 8d COMMON	BRIDGING TO JOIST
	TOENAIL	(SEE SECT. 2308.10.1, TABLE 2308.10.1)		TOENAIL	3 - 3" 14 GAGE STAPLE 3 - 3"x0.131" NAIL 3 - 8d COMMON	JOIST TO SILL OR GIRDER
NOTES	LOCATION	FASTENING	NOTES	LOCATION	FASTENING	CONNECTION

FASTENING SCHEDULE (SEE TABLE 2304.9.1 ME.S. RESIDENTIAL CONSTRUCTION CODE FOR COMPLETE DETAILS)



THESE PLANS ARE TO BE CONSIDERED ONLY AS GENERAL GUIDELINES. THE CONTRACTOR SHALL BE RESPONSIBLE FOR OBTAINING ALL NECESSARY PERMITS AND FOR VERIFYING ALL LOCAL AND STATE BUILDING CODES. THE CONTRACTOR SHALL BE RESPONSIBLE FOR OBTAINING ALL NECESSARY PERMITS AND FOR VERIFYING ALL LOCAL AND STATE BUILDING CODES. THE CONTRACTOR SHALL BE RESPONSIBLE FOR OBTAINING ALL NECESSARY PERMITS AND FOR VERIFYING ALL LOCAL AND STATE BUILDING CODES.

CONTRACTOR:
VICTOR POPOV

PROJECT NAME:
LEAHY ADDITION

REVISIONS
DATE: SEPTEMBER 8, 2013
SCALE: AS NOTED
DRAWN
FILE