

VITODENS 100

The perfect mix of performance, quality and versatility.
Gas-fired wall-mounted condensing boiler, 37 - 118 MBH



The Vitodens 100 is ENERGY STAR® qualified and EcoLogo™ certified. By choosing the Vitodens 100, you are helping to promote cleaner air and a healthier environment.



Stainless steel Inox-Radial heat exchanger

Every home. Every budget.

With its outstanding design price/performance ratio, the Vitodens 100 is the perfect mix of performance and value. Its compact design, zero clearance to combustibles and extremely quiet operation make the Vitodens 100 an ideal choice even in the smallest spaces. Plus, with a residential lifetime warranty you can be sure your investment will deliver long-lasting performance year after year.

Reliable and consistent performance

Stainless steel is the best choice for long-term reliability. That's why the Vitodens 100 is equipped with a stainless steel Inox-Radial heat exchanger and MatriX cylinder burner. Developed and manufactured by Viessmann, these high-quality stainless steel components maximize performance and reliability. Plus, the "self-cleaning" heat exchanger contributes to the boiler's long service life and dependable performance.

Outstanding versatility

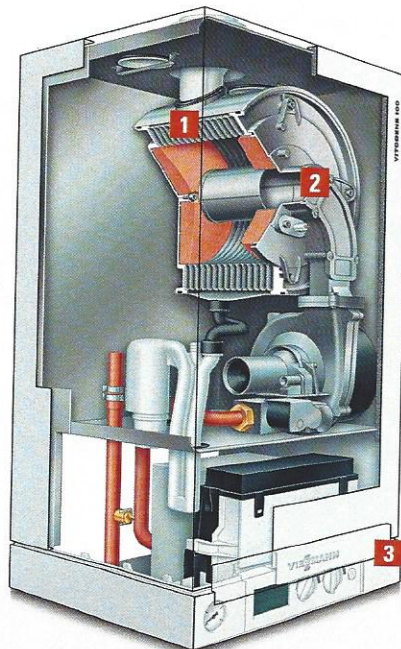
The Vitodens 100 offers the right solution for every demand – from multiple venting options to fuel flexibility (NG or LP) right out of the box. Plus, installation, service and maintenance are designed to be fast and easy with all pipe connections located at the bottom and serviceable components easily accessible from the front. You'll save time and money with fast service and maintenance calls.

Helps you save

Select an easy-to-use room thermostat, or, for greater control and additional energy savings, utilize the boiler's on-board control, which automatically adjusts the boiler water to outdoor temperatures. This not only boosts efficiency and fuel savings, but also keeps your home warm and comfortable at all times.

On-demand DHW with optional CombiPLUS Kit

With the new CombiPLUS Kit add on-demand domestic hot water (DHW) to your new Vitodens 100 space heating boiler and say goodbye to your DHW tank. Enjoy DHW at the snap of your fingers all day long with an outstanding flow rate of up to 3.6 GPM†, plus added cost savings with the energy-efficient on-demand indirect-fired design.



- 1** Inox-Radial heat exchanger
- 2** Modulating Matrix cylinder burner
- 3** On-board boiler control

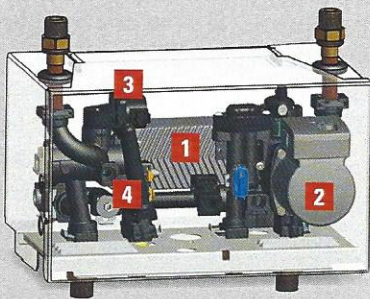
†At a 63 °F maximum temperature rise with Vitodens 100, WB1B-35.
‡Certified to NSF/ANSI 372 for Low Lead Content.



Product not exactly as shown.

Optional CombiPLUS Kit

Slightly bigger than a large shoe box, the CombiPLUS Kit installs underneath or beside the boiler and requires only minimal piping and electrical connections. Featuring stainless steel heat exchanger, pressure bypass valve, DHW temperature and flow sensors, 3-speed pump, 3-way diverting valve, and Low Lead Content Certification⁺, the CombiPLUS Kit provides reliable, high-quality DHW day after day.



- 1 Stainless steel plate-type heat exchanger
- 2 3-speed DHW and space heating pump
- 3 3-way diverting valve
- 4 Water hammer arrestor

Specifications

- Viessmann made SA240 316 Ti stainless steel Inox-Radial heat exchanger constructed to CSA B51 and ASME Section IV
- Viessmann made stainless steel MatriX cylinder burner
- Two models from 37 to 118 MBH
- Ideal for any home and budget

Benefits at a glance

- Lasting performance with proven Viessmann stainless steel Inox-Radial heat exchanger.
- Low-emission combustion thanks to the Viessmann stainless steel MatriX cylinder burner for natural gas or propane.
- Versatile on-board boiler control interfaces with most external controls – Integrated 0-10V and OpenTherm® communication ability.
- Energy saving outdoor temperature sensor standard.
- Greater venting flexibility with vent length up to 200 ft. and multiple venting options.
- Easy installation and service with pipe connections located at the bottom and serviceable components accessible from the front.
- Extremely quiet operation – quieter than most refrigerators.
- Limited lifetime warranty in residential applications.
- Expandable with CombiPLUS Kit for energy-efficient on-demand DHW.