



Reviewed for Code Compliance  
Inspection Division  
Approved with Conditions  
Date: 11/24/14

**PATCO**  
CONSTRUCTION, INC.

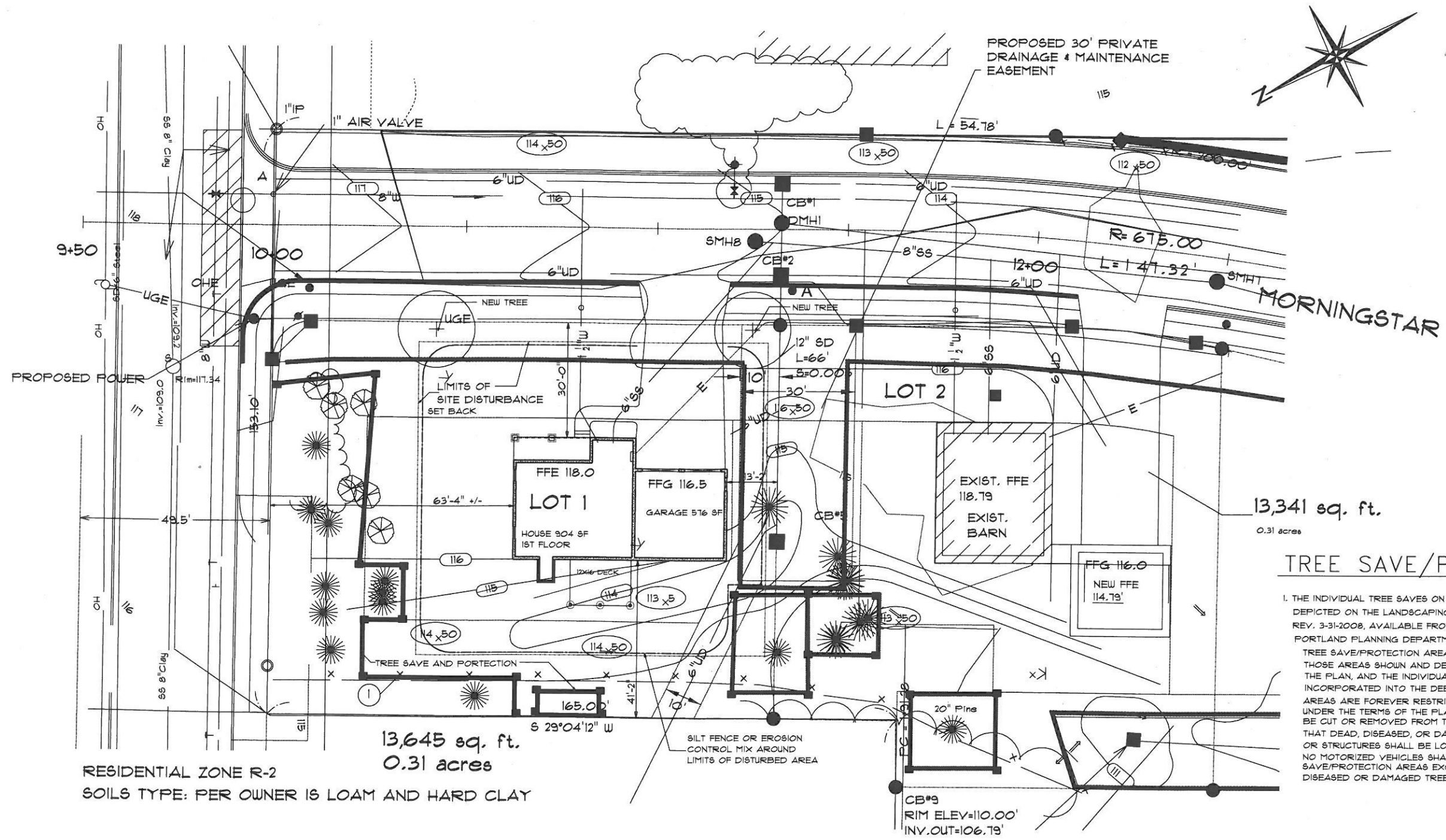
1293 MAINE ST. SANFORD, ME. 04073 - (207)824-5574 FAX (207)824-164  
Copyright © 2003 PATCO Construction, Inc. All Rights Reserved.

**LOT 1 MORNING STAR**  
**LANE**  
**THE CALLA BUNGALOW CAPE**



DATE: AUG. 15, 2014  
SCALE: AS SHOWN  
DRAWN BY: PEL  
JOB NO.: 4221  
CH'KD BY:

SHEET:  
OF



RESIDENTIAL ZONE R-2  
SOILS TYPE: PER OWNER IS LOAM AND HARD CLAY

13,645 sq. ft.  
0.31 acres

13,341 sq. ft.  
0.31 acres

### TREE SAVE/PROTECTION AREAS

1. THE INDIVIDUAL TREE SAVES ON LOTS 1-4 SHALL BE PROTECTED AS DEPICTED ON THE LANDSCAPING AND LIGHTING PLAN, DRAWING 5, REV. 3-31-2008, AVAILABLE FROM THE CITY OF PORTLAND PLANNING DEPARTMENT.

TREE SAVE/PROTECTION AREAS: "TREE SAVE/ PROTECTION AREAS" MEANS THOSE AREAS SHOWN AND DESCRIBED AS "TREE SAVE/ PROTECTION" ON THE PLAN, AND THE INDIVIDUAL TREE SAVES, IF ANY, SHOWN ON PLANS INCORPORATED INTO THE DEED TO EACH LOT. THE TREE SAVE/PROTECTION AREAS ARE FOREVER RESTRICTED TO THE PRESENT USE AS A WOODED AREA UNDER THE TERMS OF THE PLAN AND THIS DECLARATION. NO TREES SHALL BE CUT OR REMOVED FROM THE TREE SAVE/PROTECTION AREAS, EXCEPT THAT DEAD, DISEASED, OR DAMAGED TREES MAY BE REMOVED. NO BUILDINGS OR STRUCTURES SHALL BE LOCATED IN THE TREE SAVE/PROTECTION AREAS. NO MOTORIZED VEHICLES SHALL BE PERMITTED IN THE TREE SAVE/PROTECTION AREAS EXCEPT AS NEEDED FOR THE REMOVAL OF DEAD, DISEASED OR DAMAGED TREES.

### SITE PLAN

SCALE: 1" = 30'