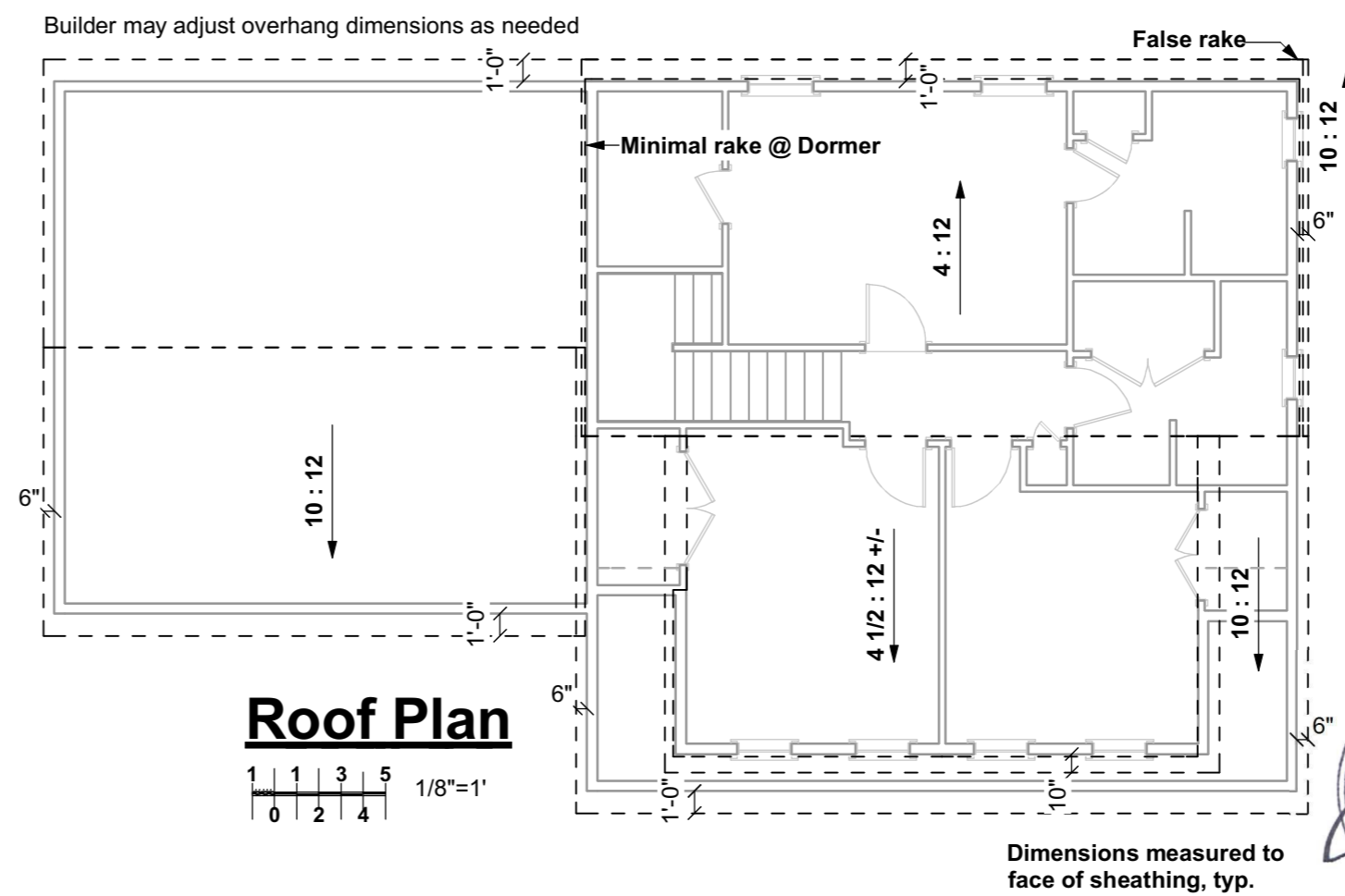


**Door & Window Notes**

- Rated Doors:** Provide fire rated and/or self-closing doors where required by local codes or local authorities
- Trimmed Openings:** Trimmed openings not shown on schedule. See Plan.
- Window Tempering:** Provide tempered windows where required by local codes or local authorities. Tempering column provided here for convenience. Windows have not been reviewed for tempering requirements.
- Window RO's:** 1/4" or 1/2" on each of 4 sides allowed for window RO's, typical. Review framing size vs RO size. Adjust per manufacturer's requirements and/or builder preference.
- Egress Windows:** Provide minimum one door or window meeting egress requirements in basement, in each sleeping room, in each potential sleeping room, and other locations required by local code, in sizes required by local code. Note that casement windows coded by manufacturer as meeting IRC 2006 egress requirements typically need to be ordered with specific hardware. Emergency Escape Window Sizes (Section R310.1.1, R310.1.2, R310.1.3 and R310.1.4). Will also comply with NFPA 101.
- Basement Windows:** Add basement windows as required to meet state or local code requirements, including but not limited to egress and light/ventilation.
- Skylights:** Skylights are not shown on this schedule, but may be required. Consult builder and/or see floor plan.
- Minimum window sill height:** IRC 2006 and later requires that upper floor window sills be 24" from floor. Where 60" high windows are used, install with window heads @ 84 1/2" or more.

WINDOW SCHEDULE								
NUMBER	QTY	WIDTH	HEIGHT	R/O	EGRESS	TEMPERED	DESCRIPTION	COMMENTS
W01	1	23 1/2"	23 1/2"	24"X24"		YES	AWNING	
W02	1	23 1/2"	47 1/2"	24"X48"		YES	DOUBLE HUNG	
W03	2	29 1/2"	47 1/2"	30"X48"	YES		SNGL CASEMENT-HL	
W04	2	29 1/2"	47 1/2"	30"X48"	YES		SNGL CASEMENT-HR	
W05	1	35 1/2"	51 1/2"	36"X52"			DOUBLE HUNG	
W06	5	35 1/2"	59 1/2"	36"X60"			DOUBLE HUNG	
W07	2	35 1/2"	59 1/2"	36"X60"	YES		DOUBLE HUNG	
W08	1	34"	37"	34 1/2"X37 1/2"			DOUBLE HUNG	
W09	1	59 1/2"	59 1/2"	60"X60"			FIXED GLASS	
W10	2	36"	18"	36 1/2"X18 1/2"			HOPPER	

DOOR SCHEDULE							
NUMBER	QTY	FLOOR	SIZE	WIDTH	HEIGHT	TYPE	COMMENTS
D01	1	1	2468 L IN	28"	80"	HINGED	
D02	1	1	2468 R IN	28"	80"	HINGED	
D03	1	1	3068 R EX	36"	80"	HINGED	
D04	1	1	2668 R IN	30"	80"	HINGED	
D05	1	1	2868 L EX	32"	80"	HINGED	
D06	1	1	2668 L IN	30"	80"	HINGED	
D07	1	1	3068 L EX	36"	80"	HINGED	
D08	1	1	6068 R EX	72"	80"	SLIDER	
D09	2	1	9080	108"	96"	GARAGE	
D10	1	2	1268 R IN	14"	80"	HINGED	
D11	1	2	2068 R IN	24"	80"	HINGED	
D12	2	2	2468 L IN	28"	80"	HINGED	
D13	2	2	2868 R IN	32"	80"	HINGED	
D14	2	2	2868 L IN	32"	80"	HINGED	
D15	2	2	5068 L/R IN	60"	80"	DOUBLE HINGED	
D16	1	1	1668 L IN	18"	80"	HINGED	
D17	1	1	2068 R IN	24"	80"	HINGED	
D18	1	2	4068 L/R IN	48"	80"	DOUBLE HINGED	



Your use of these drawings constitutes an acceptance of responsibility as outlined in "Dear Code Officer" on the first page of these drawings, and on our web site: <http://www.artformhomeplans.com/TermsConditions.a5w>

If you have any concerns or questions, please feel free to contact us. We are happy to clarify matters that fall within our scope, as listed on the first page. We can also often provide affordable support for issues that are your responsibility, such as energy design/calcs, or additional detailing.

**Artform Home Plans**  
 AFHP Design # 190.124 KR  
 © 2006-2014 Wendy L. Welton 603.431.9559

**April Calla, Classic**  
 Lot 1 Morning Star Avenue  
 Portland, ME

1/4"=1'-0" unless noted otherwise / Print @ 1:1  
 PDF created on: 9/16/2014, drawn by ACJ

Issued for:  
**Construction**

