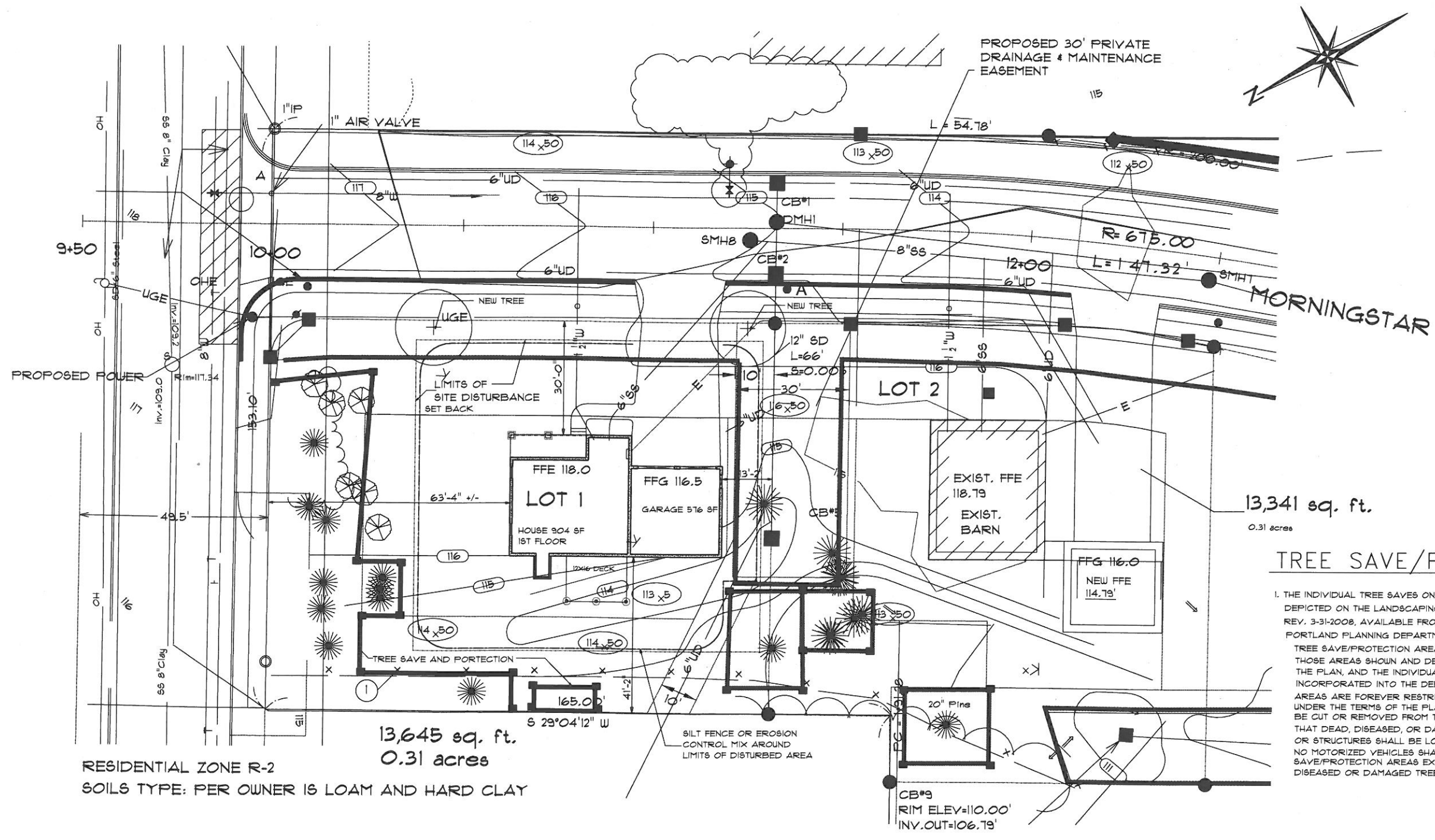




DATE:  
AUG. 15, 2014  
SCALE:  
AS SHOWN  
DRAWN BY:  
PEL  
JOB NO.:  
4221  
CHK'D BY:

SHEET:  
OF



RESIDENTIAL ZONE R-2  
SOILS TYPE: PER OWNER IS LOAM AND HARD CLAY

13,645 sq. ft.  
0.31 acres

13,341 sq. ft.  
0.31 acres

**TREE SAVE/PROTECTION AREAS**

1. THE INDIVIDUAL TREE SAVES ON LOTS 1-4 SHALL BE PROTECTED AS DEPICTED ON THE LANDSCAPING AND LIGHTING PLAN, DRAWING 5, REV. 3-31-2008, AVAILABLE FROM THE CITY OF PORTLAND PLANNING DEPARTMENT.  
TREE SAVE/PROTECTION AREAS: "TREE SAVE/ PROTECTION AREAS" MEANS THOSE AREAS SHOWN AND DESCRIBED AS "TREE SAVE/ PROTECTION" ON THE PLAN, AND THE INDIVIDUAL TREE SAVES, IF ANY, SHOWN ON PLANS INCORPORATED INTO THE DEED TO EACH LOT. THE TREE SAVE/PROTECTION AREAS ARE FOREVER RESTRICTED TO THE PRESENT USE AS A WOODED AREA UNDER THE TERMS OF THE PLAN AND THIS DECLARATION. NO TREES SHALL BE CUT OR REMOVED FROM THE TREE SAVE/PROTECTION AREAS, EXCEPT THAT DEAD, DISEASED, OR DAMAGED TREES MAY BE REMOVED. NO BUILDINGS OR STRUCTURES SHALL BE LOCATED IN THE TREE SAVE/PROTECTION AREAS. NO MOTORIZED VEHICLES SHALL BE PERMITTED IN THE TREE SAVE/PROTECTION AREAS EXCEPT AS NEEDED FOR THE REMOVAL OF DEAD, DISEASED OR DAMAGED TREES.

**SITE PLAN**  
SCALE: 1" = 30'