

**Framers Check List**

Confirm or review the following prior to framing:

- Initials Date Checked \_\_\_\_\_ Framing Plans, floor plans, elevations & sections on-site & reviewed
- \_\_\_\_\_ Confirmed window brand and sizes, adjusted RO's
- \_\_\_\_\_ Confirmed kitchen sink location & assoc. window
- \_\_\_\_\_ Confirmed duct chase sizes
- \_\_\_\_\_ Consult GC re: regional adjustments to framing member sizes per lumber yard calculations
- \_\_\_\_\_ If rafter size changed to accommodate snow load different, reviewed details, particularly where windows near roofs, for needed adjustments
- \_\_\_\_\_ Confirmed optional porch and/or deck sizes

**Built-up Beams:**  
Unless otherwise noted, connect multiple ply beams as follows:

- (2) 9 1/4" LVL:
  - Flush framed
    - o (2) rows 3 3/8" TrussLock @ 24" oc, or
    - o (2) rows SDS 1/4x3 1/2 @ 24" oc
  - Framed under (2) rows 10d nails @ 24" oc

- (2) 11 1/4" LVL:
  - Flush framed
    - o (2) rows 3 3/8" TrussLock @ 19.2" oc, or
    - o (2) rows SDS 1/4x3 1/2 @ 19.2" oc
  - Framed under (2) rows 10d nails @ 24" oc

- (2) 16" LVL or greater:
  - Flush framed
    - o (3) rows 3 3/8" TrussLock @ 19.2" oc, or
    - o (3) rows SDS 1/4x3 1/2 @ 19.2" oc
  - Framed under (2) rows 10d nails @ 24" oc

- (3) 9 1/4" LVL:
  - Flush framed
    - o (2) rows 3 3/8" TrussLock @ 19.2" oc, or
    - o (2) rows SDS 1/4x3 1/2 @ 19.2" oc
  - Framed under (2) rows 10d nails @ 24" oc

- (3) 11 1/4" LVL:
  - Flush framed
    - o (2) rows 3 3/8" TrussLock @ 16" oc, or
    - o (2) rows SDS 1/4x3 1/2 @ 16" oc
  - Framed under (2) rows 10d nails @ 24" oc

- (3) 16" LVL or greater:
  - Flush framed
    - o (3) rows 3 3/8" TrussLock @ 16" oc, or
    - o (3) rows SDS 1/4x3 1/2 @ 16" oc
  - Framed under (2) rows 10d nails @ 24" oc

- (4) 9 1/4" LVL:
  - Flush framed
    - o (2) rows 5" TrussLock @ 16" oc, or
    - o (2) rows SDS 1/4x6 @ 16" oc
  - Framed under (2) rows 10d nails @ 24" oc

- (4) 11 1/4" LVL:
  - Flush framed
    - o (2) rows 5" TrussLock @ 16" oc, or
    - o (2) rows SDS 1/4x6 @ 16" oc
  - Framed under (2) rows 10d nails @ 12" oc

- (4) 16" LVL or greater:
  - Flush framed
    - o (3) rows 5" TrussLock @ 16" oc, or
    - o (3) rows SDS 1/4x6 @ 16" oc
  - Framed under (2) rows 10d nails @ 12" oc

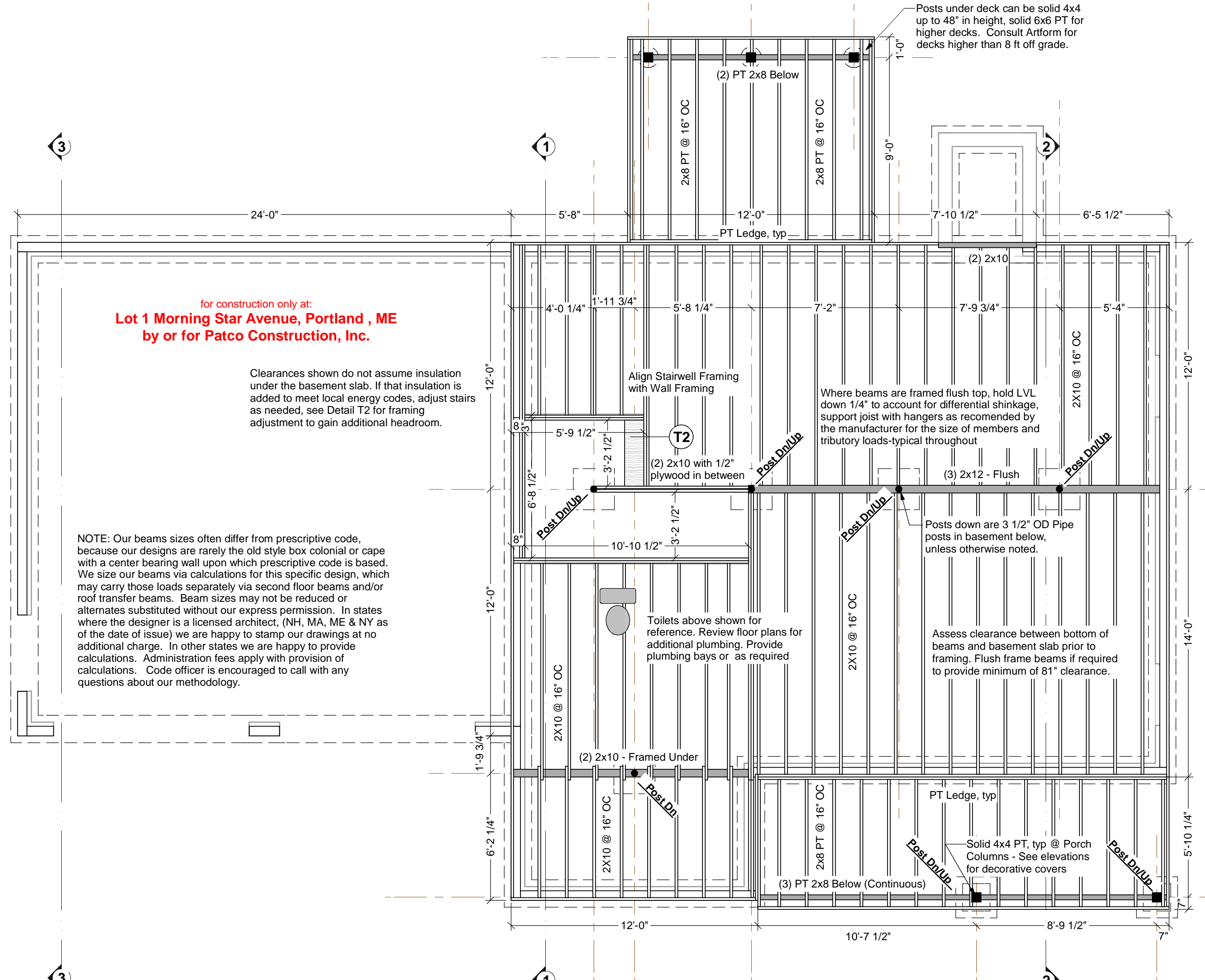
**Beam Substitutions:**

(2) 9 1/4" LVL may replace a double or triple 2x10 beam. No other substitutions are allowed. Conventional lumber beams MAY NOT be substituted for LVL beams by any "rule of thumb". Substitutions must be calculated by either Artform or a structural engineer. If calculated by a structural engineer, provide stamped plans and/or calculations.

We specify LVL beams as built up members to allow framers to use existing stock. You may substitute single piece LVLs of equivalent overall size for built-up members, unless otherwise noted.

Built-up members MAY NOT replace single piece LVL's where specified.

Where a beam of 1 3/4" or less in width is specified as framed under, either brace at 48" or double member for lateral stability.



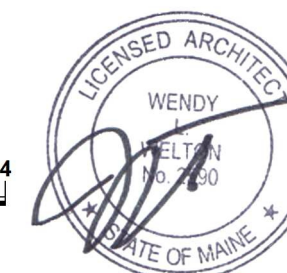
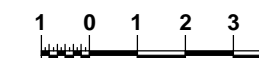
for construction only at:  
**Lot 1 Morning Star Avenue, Portland, ME**  
by or for Patco Construction, Inc.

Clearances shown do not assume insulation under the basement slab. If that insulation is added to meet local energy codes, adjust stairs as needed, see Detail T2 for framing adjustment to gain additional headroom.

NOTE: Our beams sizes often differ from prescriptive code, because our designs are rarely the old style box colonial or cape with a center bearing wall upon which prescriptive code is based. We size our beams via calculations for this specific design, which may carry those loads separately via second floor beams and/or roof transfer beams. Beam sizes may not be reduced or alternates substituted without our express permission. In states where the designer is a licensed architect, (NH, MA, ME & NY as of the date of issue) we are happy to stamp our drawings at no additional charge. In other states we are happy to provide calculations. Administration fees apply with provision of calculations. Code officer is encouraged to call with any questions about our methodology.

**First Floor Framing**

Structure designed for  
Snow Load of 55 PSF



<p>AFHP Design # 190.124 KR © 2006-2014 Wendy L. Welton 603.431.9559</p>	
<p><b>April Calla, Classic</b> Lot 1 Morning Star Avenue Portland, ME</p>	<p><b>8</b></p>
<p>1/4"=1'-0" unless noted otherwise / Print @ 1:1 PDF created on: 9/16/2014, drawn by ACJ</p>	<p>Issued for: <b>Construction</b></p>
<p>R2: 9.15.14 - Reverse</p>	