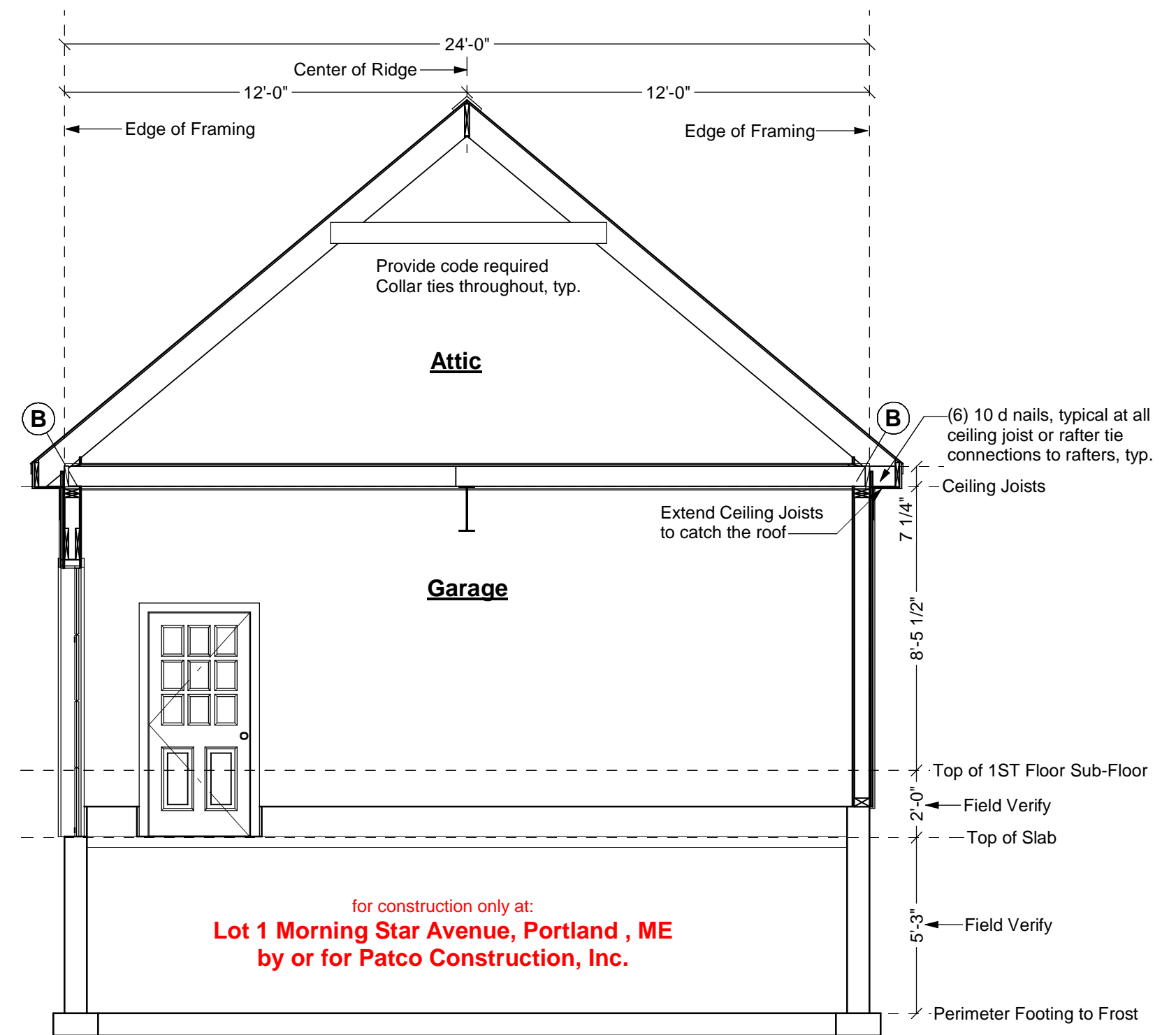
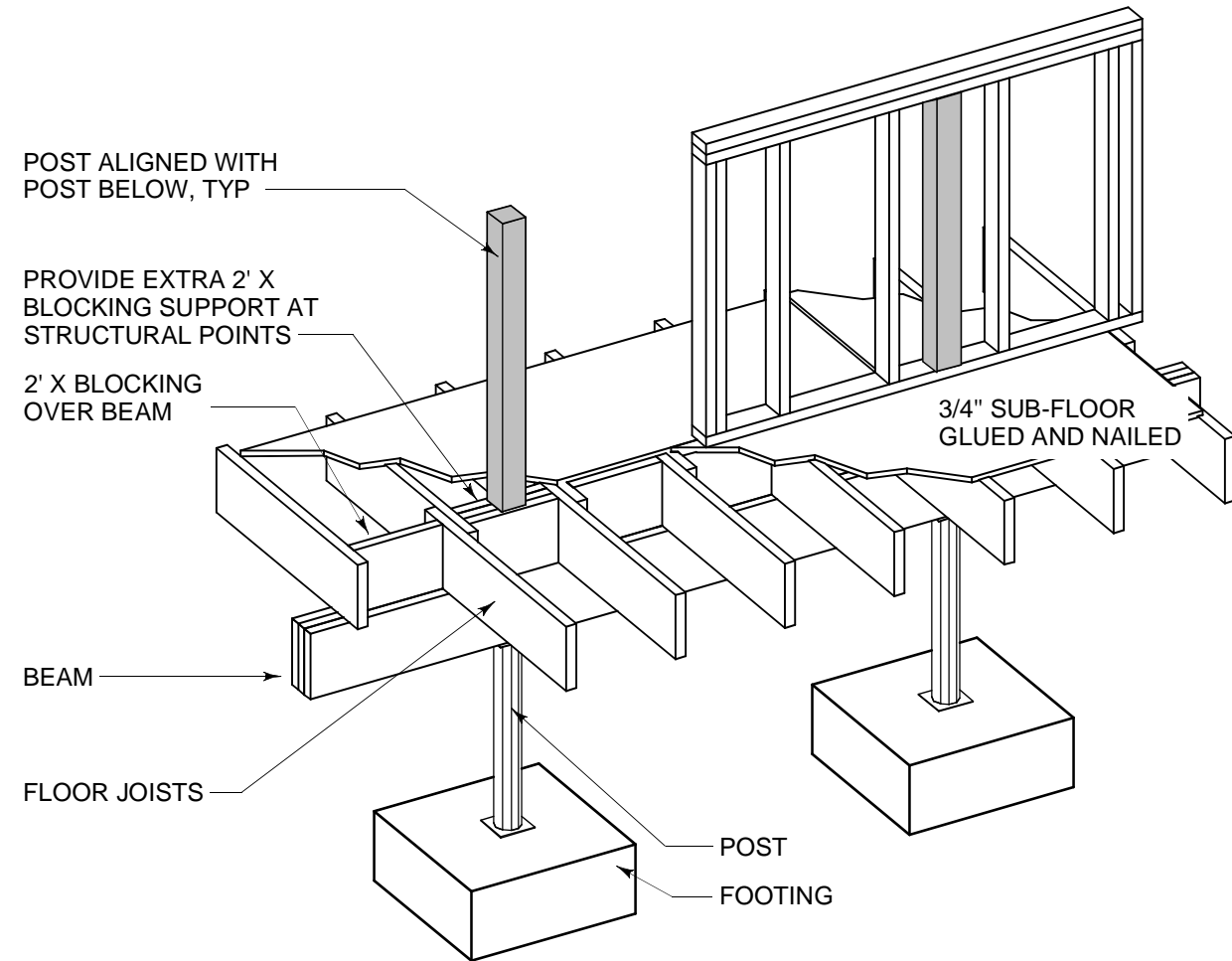
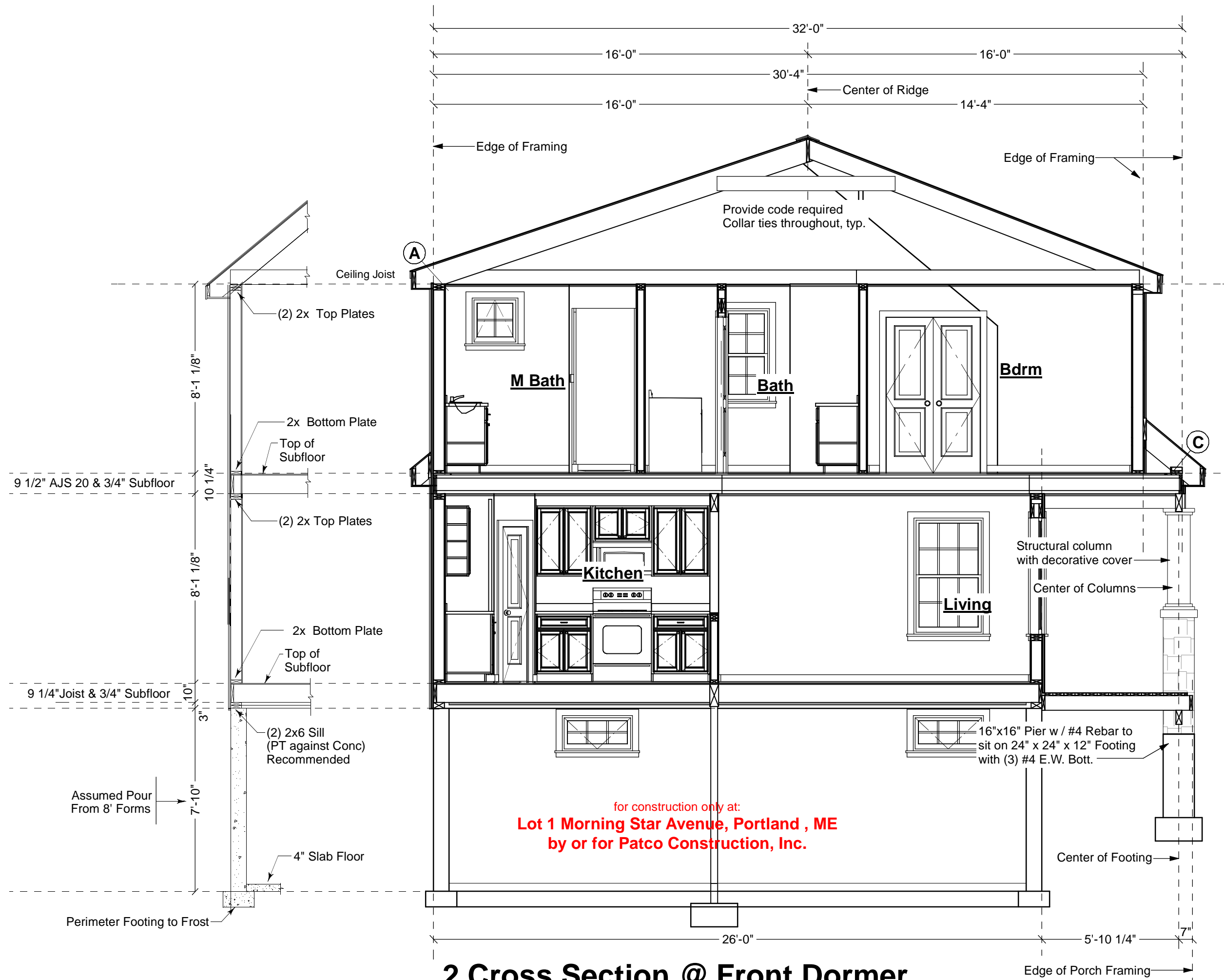


Follow manufacturer's instructions both for installation of joist hangers to joist and to beam. The illustration below, by Simpson Strong Tie, is provided as a courtesy. Consult their full manual for acceptable fastener sizes and other important instructions.



3 Cross Section @ Garage



2 Cross Section @ Front Dormer

Your use of these drawings constitutes an acceptance of responsibility as outlined in "Dear Code Officer" on the first page of these drawings, and on our web site: <http://www.artformhomeplans.com/TermsConditions.a5w>

If you have any concerns or questions, please feel free to contact us. We are happy to clarify matters that fall within our scope, as listed on the first page. We can also often provide affordable support for issues that are your responsibility, such as energy design/calcs, or additional detailing.

Artform Home Plans

AFHP Design # 190.124 KR
© 2006-2014 Wendy L. Welton 603.431.9559

April Calla, Classic
Lot 1 Morning Star Avenue
Portland, ME

1/4"=1'-0" unless noted otherwise / Print @ 1:1
PDF created on: 9/16/2014, drawn by ACJ

R2: 9.15.14 - Reverse

7
Issued for:
Construction

