

CITY OF PORTLAND, ME
PLANNING BOARD

FOR ZONING

PREPARED FOR:



400 FRIBERG PARKWAY
WESTBOROUGH, MA 01581
(508) 330-3330 TEL



1600 OSGOOD STREET
BUILDING 20 NORTH, SUITE 3090
N. ANDOVER, MA 01845
TEL: (978) 557-5553
FAX: (978) 336-5586

APPROXIMATE COORDINATES: LAT: N43° 43' 01.74"
LONG: W70° 17' 44.60"

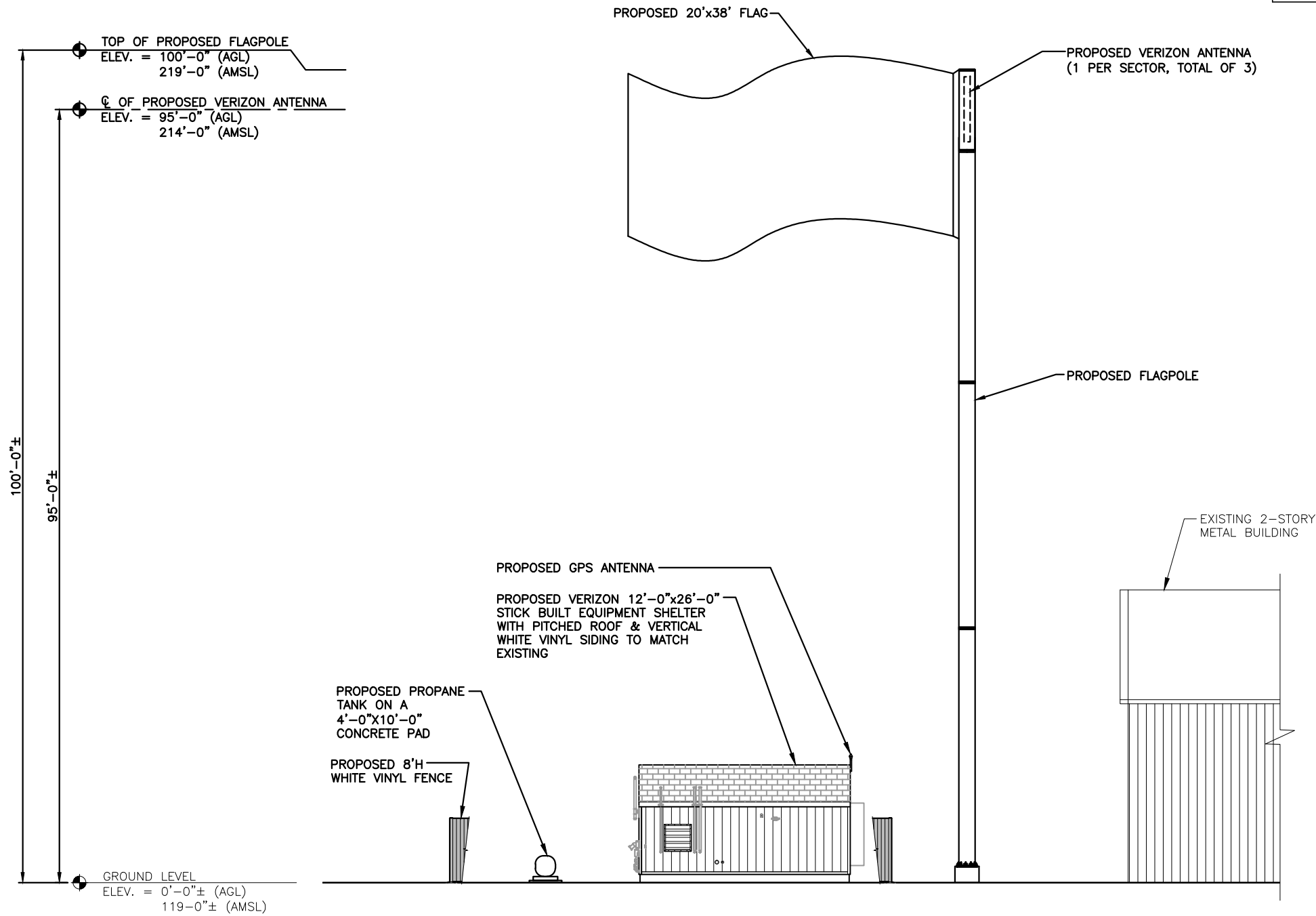
NOTE:
1. VERIFY AZIMUTHS W/ RF ENGINEER.
2. EQUIPMENT SHELTER DESIGN PROVIDED BY OTHERS.

NOTE:
VERIZON WILL REPLACE FLAG AS WEAR AND TEAR BEGIN TO OCCUR

PROPOSED ANTENNA INFORMATION

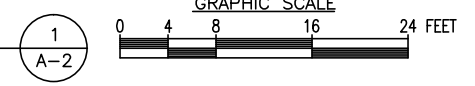
SECTOR	STATUS	AZIMUTH	CABLE LENGTH
1	PROPOSED	TBD	150'
2	PROPOSED	TBD	150'
3	PROPOSED	TBD	150'

NOTE: CABLE LENGTH = EXACT LENGTH PLUS 25'



SOUTHEAST ELEVATION

22x34 SCALE: 1/8"=1'-0"
11x17 SCALE: 1/16"=1'-0"



CHECKED BY: JX

APPROVED BY: DPH

SUBMITTALS

REV.	DATE	DESCRIPTION	BY
0	07/17/15	FOR ZONING	HH

SITE NAME:
PORTLAND 3 ME

SITE ADDRESS:
476 SUMMIT STREET
PORTLAND, ME 04103

SHEET TITLE
ELEVATION

SHEET NUMBER
A-2