

CITY OF PORTLAND, ME  
PLANNING BOARD

FOR ZONING

PREPARED FOR:



400 FRIBERG PARKWAY  
WESTBOROUGH, MA 01581  
(508) 330-3330 TEL



1600 OSGOOD STREET  
BUILDING 20 NORTH, SUITE 3090  
N. ANDOVER, MA 01845  
TEL: (978) 557-5553  
FAX: (978) 336-5586

APPROXIMATE COORDINATES: LAT: N43° 43' 01.74" LONG: W70° 17' 44.60"

NOTE:  
1. VERIFY AZIMUTHS W/ RF ENGINEER.  
2. EQUIPMENT SHELTER DESIGN PROVIDED BY OTHERS.

NOTE:  
VERIZON WILL REPLACE FLAG AS WEAR AND TEAR BEGIN TO OCCUR



CHECKED BY: JX

APPROVED BY: DPH

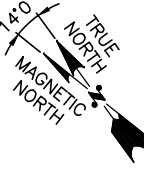
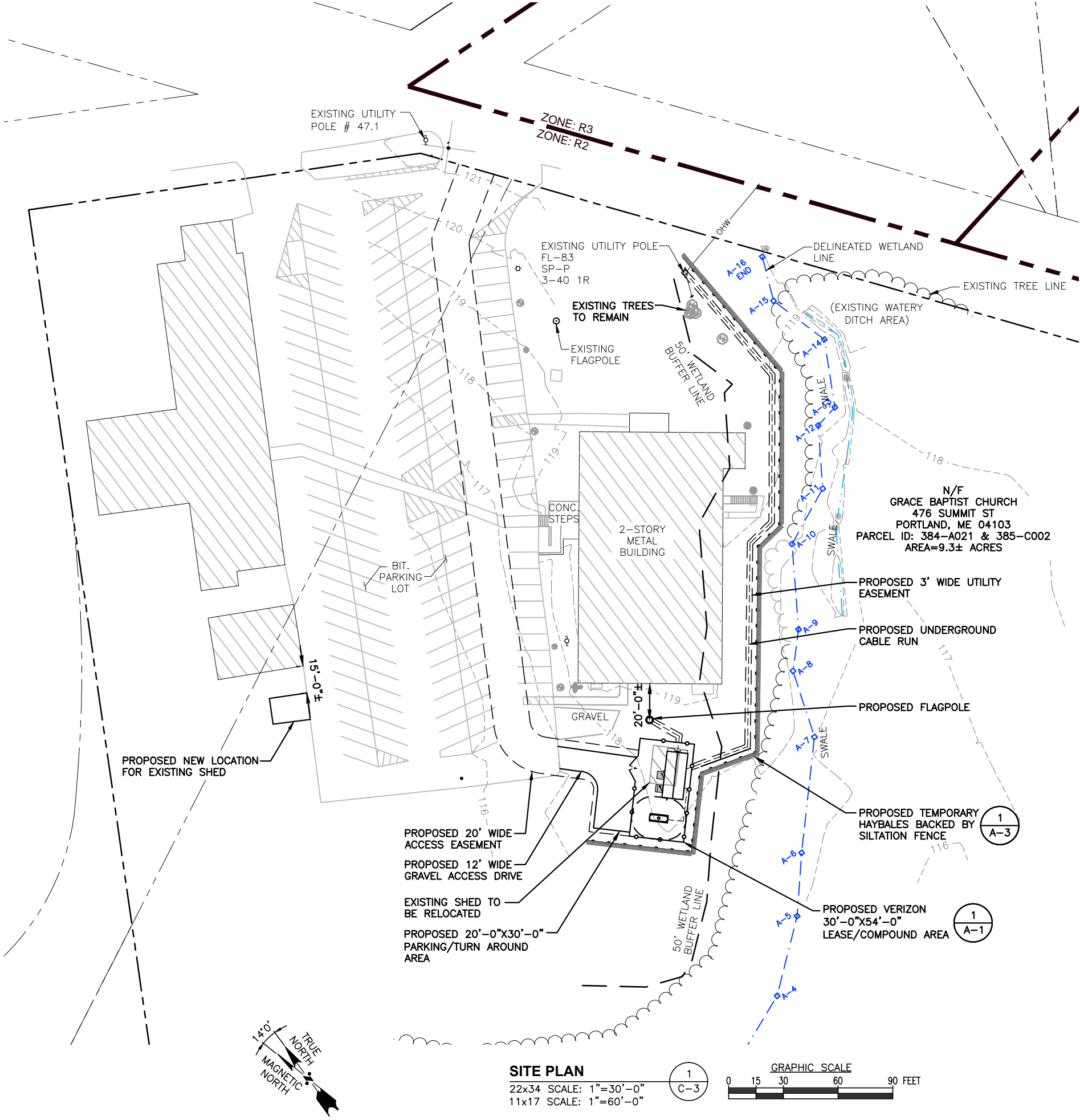
| SUBMITTALS |          |             |    |
|------------|----------|-------------|----|
| REV.       | DATE     | DESCRIPTION | BY |
| 0          | 07/17/15 | FOR ZONING  | HH |

SITE NAME:  
PORTLAND 3 ME

SITE ADDRESS:  
476 SUMMIT STREET  
PORTLAND, ME 04103

SHEET TITLE  
SITE PLAN

SHEET NUMBER  
C-3



**SITE PLAN**  
22x34 SCALE: 1"=30'-0"  
11x17 SCALE: 1"=60'-0"

GRAPHIC SCALE  
0 15 30 60 90 FEET