

CITY OF PORTLAND, ME  
PLANNING BOARD

FOR ZONING

PREPARED FOR:



400 FRIBERG PARKWAY  
WESTBOROUGH, MA 01581  
(508) 330-3330 TEL



1600 OSGOOD STREET  
BUILDING 20 NORTH, SUITE 3090 TEL: (978) 557-5553  
N. ANDOVER, MA 01845 FAX: (978) 336-5586

APPROXIMATE COORDINATES: LAT: N43° 43' 01.74"  
LONG: W70° 17' 44.60"

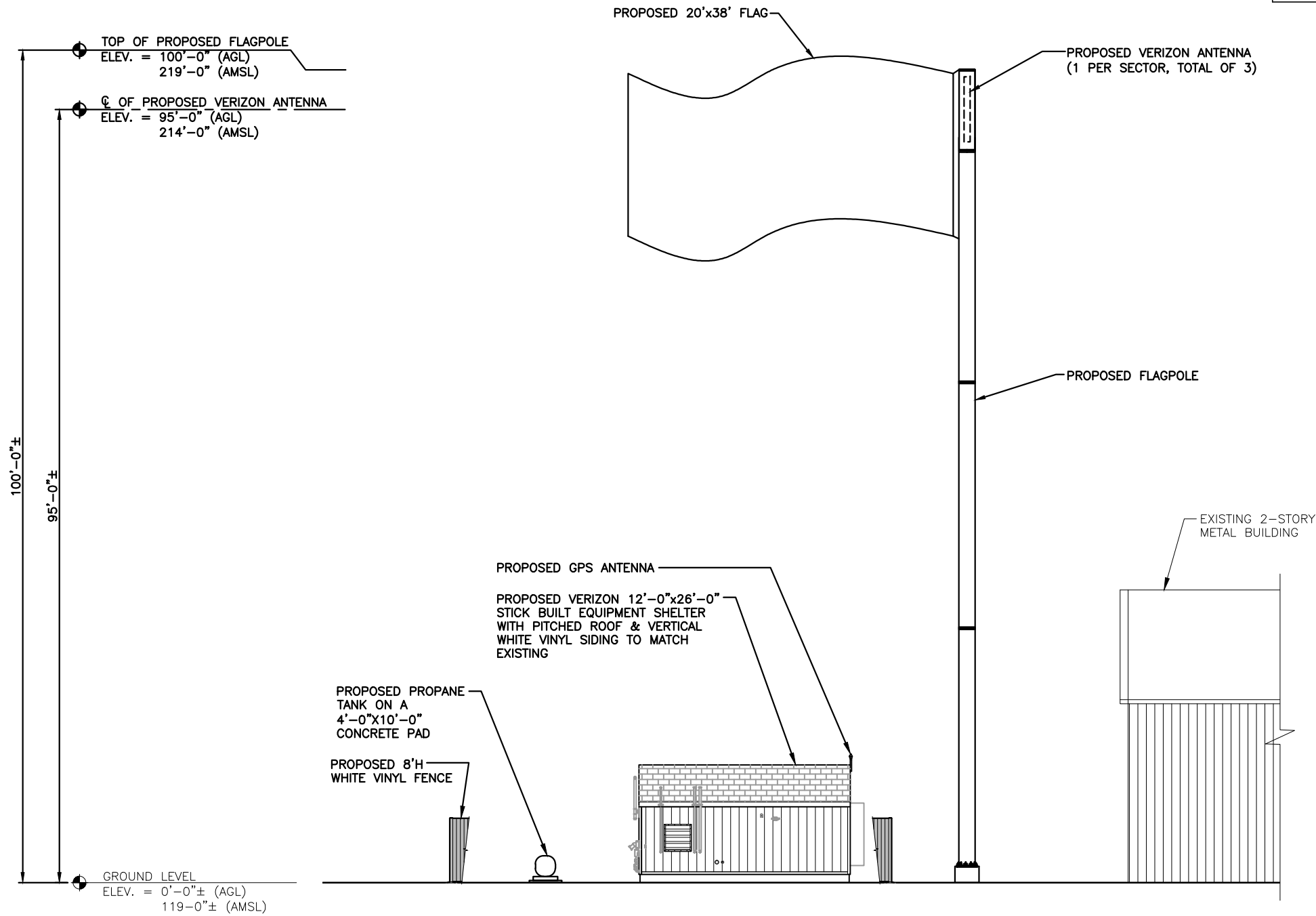
NOTE:  
1. VERIFY AZIMUTHS W/ RF ENGINEER.  
2. EQUIPMENT SHELTER DESIGN PROVIDED BY OTHERS.

NOTE:  
VERIZON WILL REPLACE FLAG AS WEAR AND TEAR BEGIN TO OCCUR

**PROPOSED ANTENNA INFORMATION**

SECTOR	STATUS	AZIMUTH	CABLE LENGTH
1	PROPOSED	TBD	150'
2	PROPOSED	TBD	150'
3	PROPOSED	TBD	150'

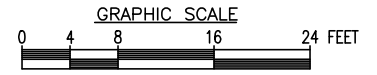
NOTE: CABLE LENGTH = EXACT LENGTH PLUS 25'



**SOUTHEAST ELEVATION**

22x34 SCALE: 1/8"=1'-0"  
11x17 SCALE: 1/16"=1'-0"

1  
A-2



CHECKED BY: JX

APPROVED BY: DPH

SUBMITTALS

REV.	DATE	DESCRIPTION	BY
0	07/17/15	FOR ZONING	HH

SITE NAME:  
PORTLAND 3 ME

SITE ADDRESS:  
476 SUMMIT STREET  
PORTLAND, ME 04103

SHEET TITLE  
ELEVATION

SHEET NUMBER  
**A-2**