

GRACE BAPTIST CHURCH (CBL: 384 A021001)

MAIN BUILDING (CHURCH)

- | | |
|--|-------------------------------------|
| 1. Exit lights burned out throughout building | Complied |
| 2. Emergency lights not working in multiple locations. | Complied |
| * 3. Additional emergency lights required in 2 hallways. | By Sept. 2008 |
| | (Contractor: Del Ricker 829-2157) |
| 4. Exit blocked by photocopier in lower level hallway | Complied |
| * 5. Ceiling tiles in electrical closet has openings | By Sept. 2008 |
| * 6. Combustibles stored under stairway | By Apr. 2008 |
| 7. Exit door of lower level difficult to open | Complied |
| * 8. Classroom windows of lower level do not meet code | By Sept. 2010 |
| 9. Exit blocked by refrigerator in upper level hallway | Complied |

GYM BUILDING (FAMILY CENTER)

- | | |
|---|-------------------------------------|
| 1. All fire extinguishers need annual servicing | Complied |
| * 2. Rear hall ceiling tiles missing, exposing electrical wires | By May 2008 |
| | (Contractor: Mike Pease 499-7867) |
| * 3. Combustibles stored under stairway | By Apr. 2008 |
| 4. Scuttle (drop-down stairs) needs repair | Complied |
| * 5. Fire alarm system needs to be tested and evaluated | By Sept. 2008 |
| | (Contractor: Del Ricker 829-2157) |
| 6. Stairs from gym up to classrooms need additional handrails | Complied |
| 7. No smoke alarm in apartment | Complied |
| 8. Emergency lights not working at top of gym stairs | Complied |
| 9. Panic bar of front door sticks | Complied |

GARAGE (BUS BARN)

- | | |
|--|----------|
| 1. Missing electrical outlet covers | Complied |
| 2. Combustibles stored within 36 inches of furnace | Complied |

476 Summit St

Portland, ME 04103

207.797.5509

March 20, 2008

Portland Fire Department
380 Congress St.
Portland, ME 04101

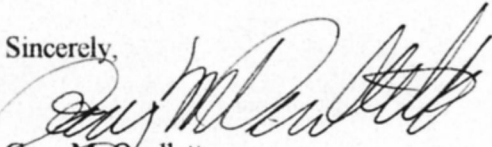
RE: CBL: 384 A021001

Dear Captain,

This letter serves to provide a **Plan of Action** for cited safety violations at Grace Baptist Church.
Please find the attached list of items and their target compliance dates.

We appreciate your efforts to help us meet prescribed standards to insure the safety of our people
and your patience and understanding.

Sincerely,



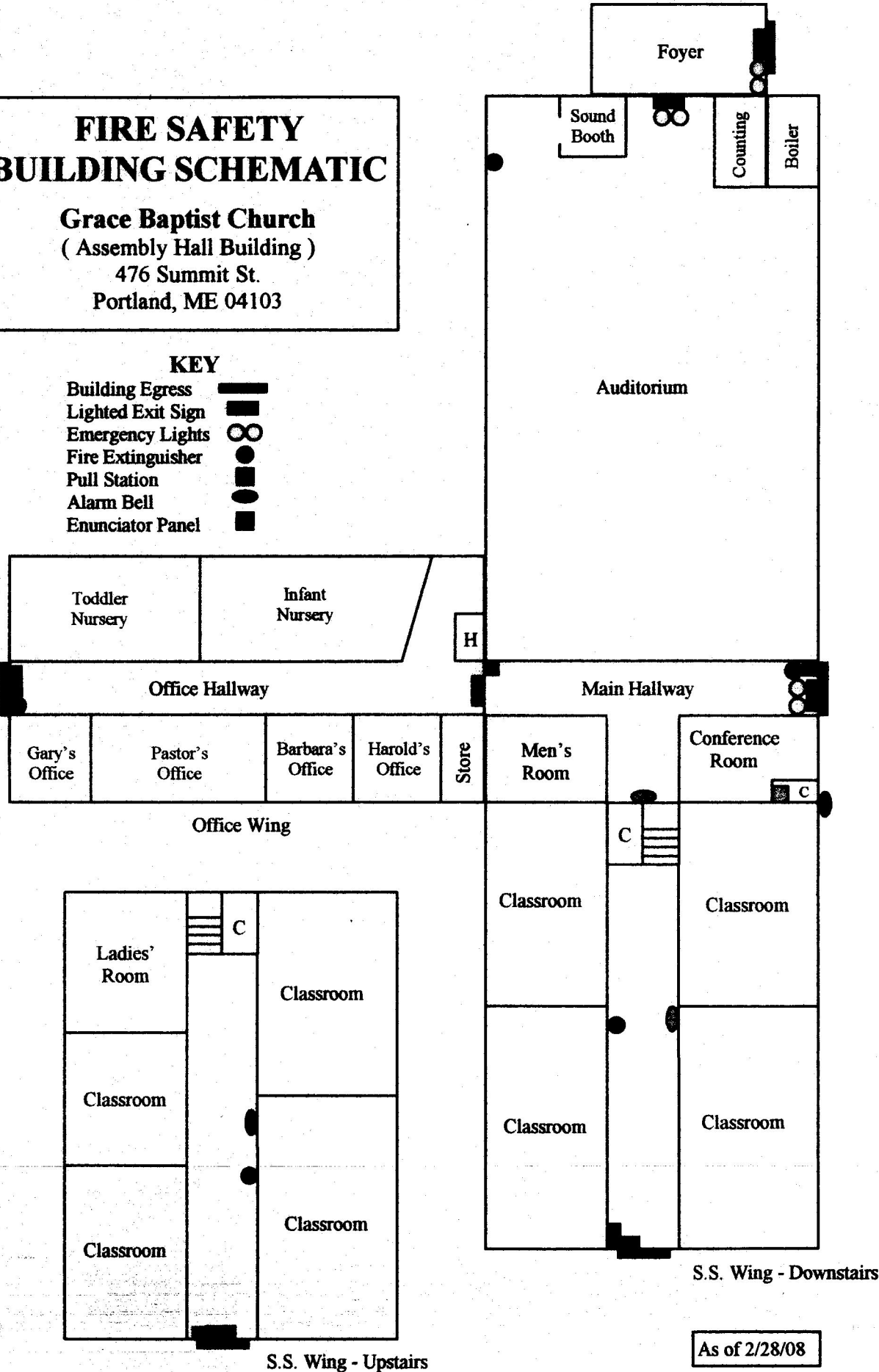
Gary M. Ouellette
Associate Pastor

FIRE SAFETY BUILDING SCHEMATIC

Grace Baptist Church
(Assembly Hall Building)
476 Summit St.
Portland, ME 04103

KEY

- Building Egress 
- Lighted Exit Sign 
- Emergency Lights 
- Fire Extinguisher 
- Pull Station 
- Alarm Bell 
- Enunciator Panel 



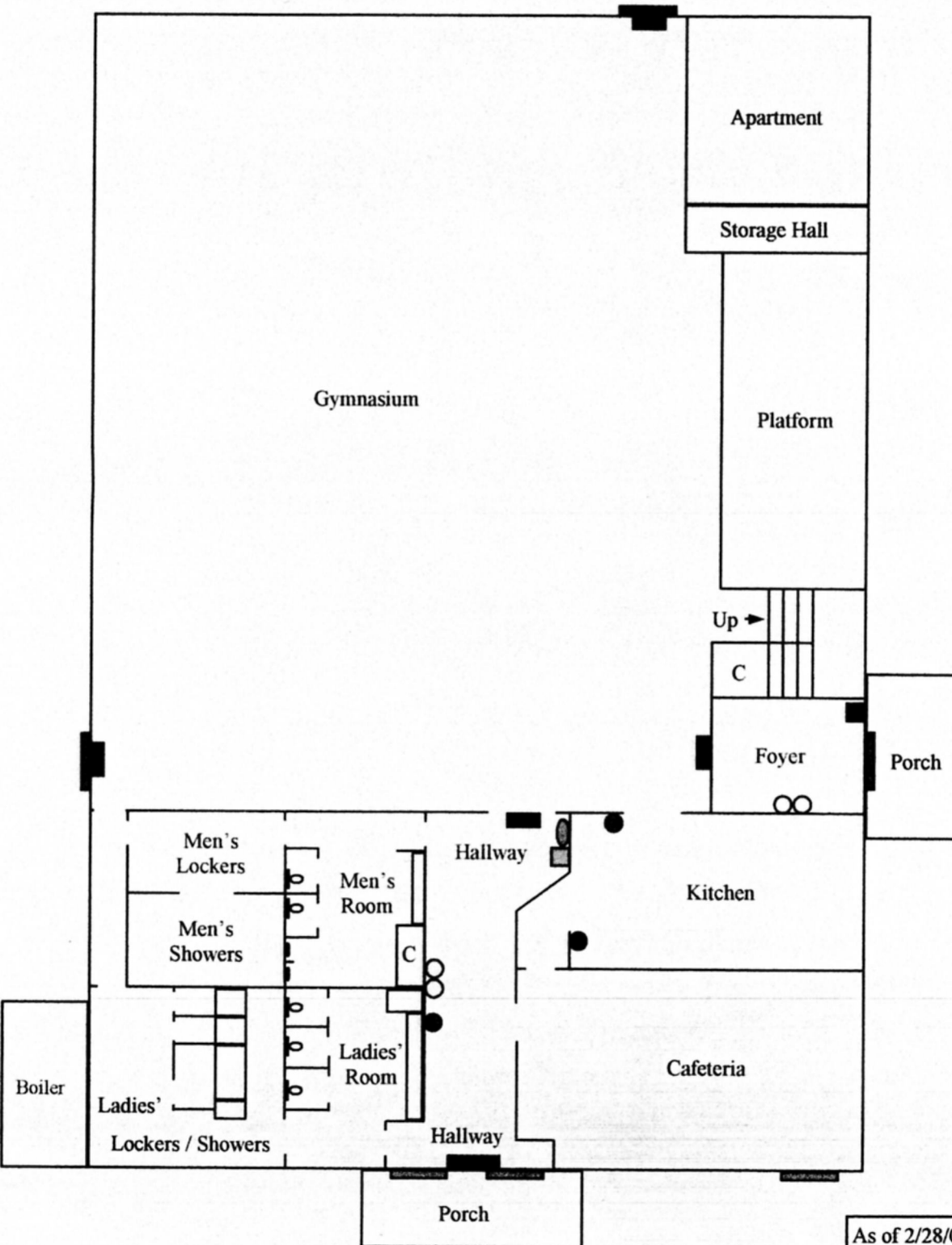
As of 2/28/08

FIRE SAFETY BUILDING SCHEMATIC

Grace Baptist Church
(Family Center Building, Downstairs)
476 Summit St.
Portland, ME 04103

KEY

- Building Egress
- Lighted Exit Sign
- Emergency Lights
- Fire Extinguisher
- Pull Station
- Alarm Bell
- Enunciator Panel



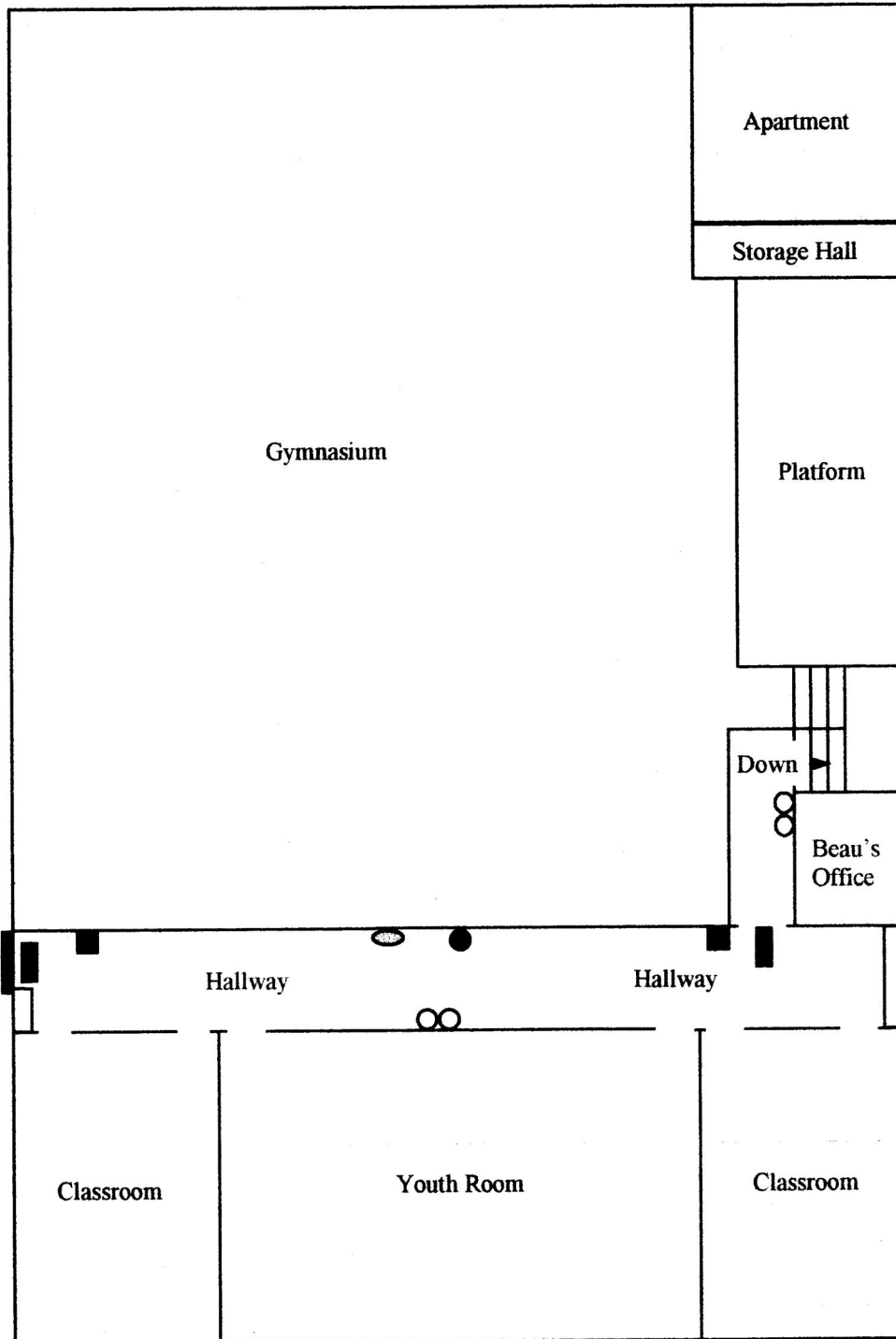
As of 2/28/08

FIRE SAFETY BUILDING SCHEMATIC

Grace Baptist Church
(Family Center Building, Upstairs)
476 Summit St.
Portland, ME 04103

KEY

Building Egress
Lighted Exit Sign
Emergency Lights
Fire Extinguisher
Pull Station
Alarm Bell
Enunciator Panel



As of 2/28/08