

Project: Matt Flaherty  
 Energy Code: 2006 IRC  
 Location: Portland, Maine  
 Construction Type: Single-Family  
 Project Type: New Construction  
 Construction Code: 2018 IRC  
 Construction Year Area: 3,314 sq ft  
 Quality Area: 9%

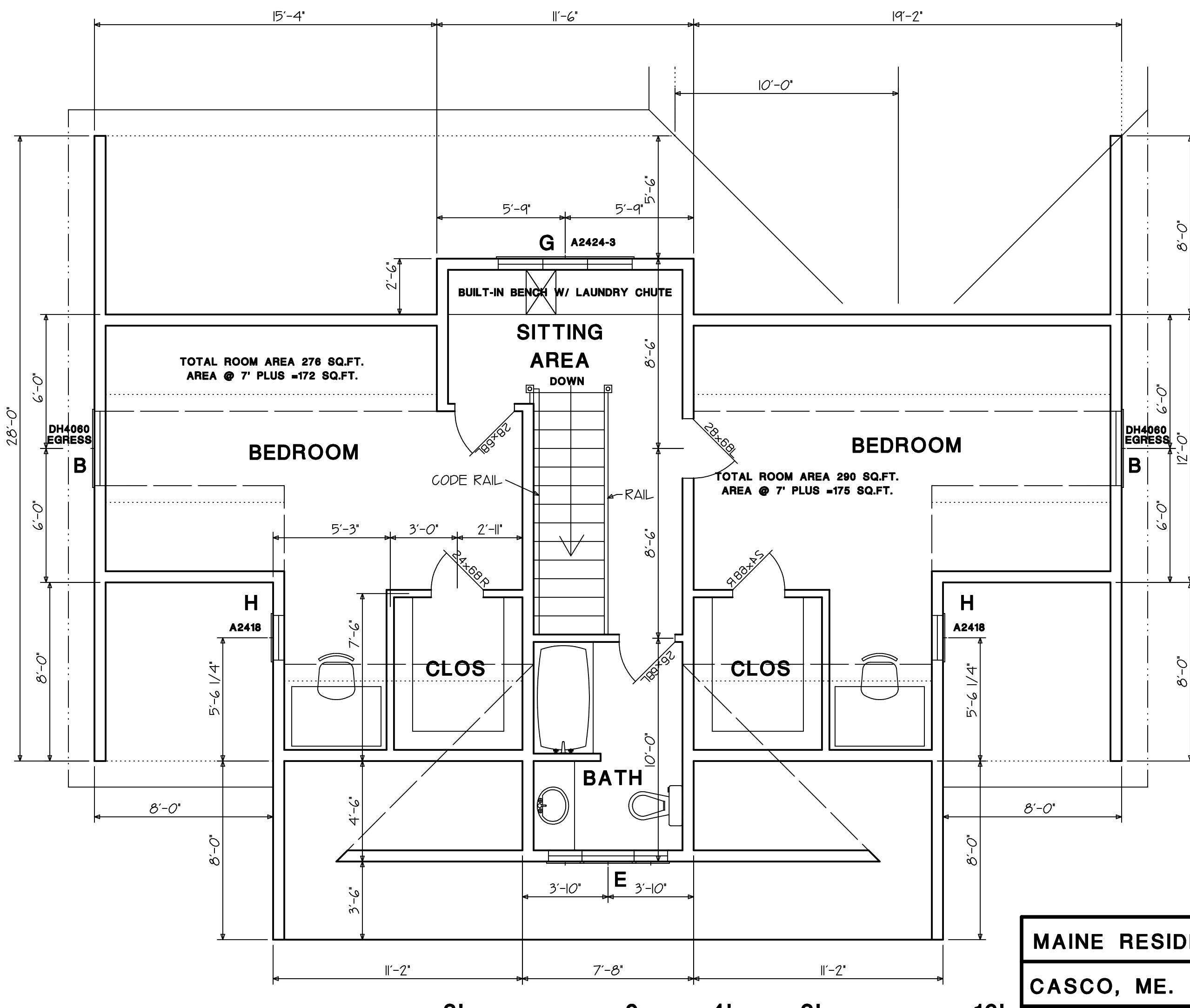
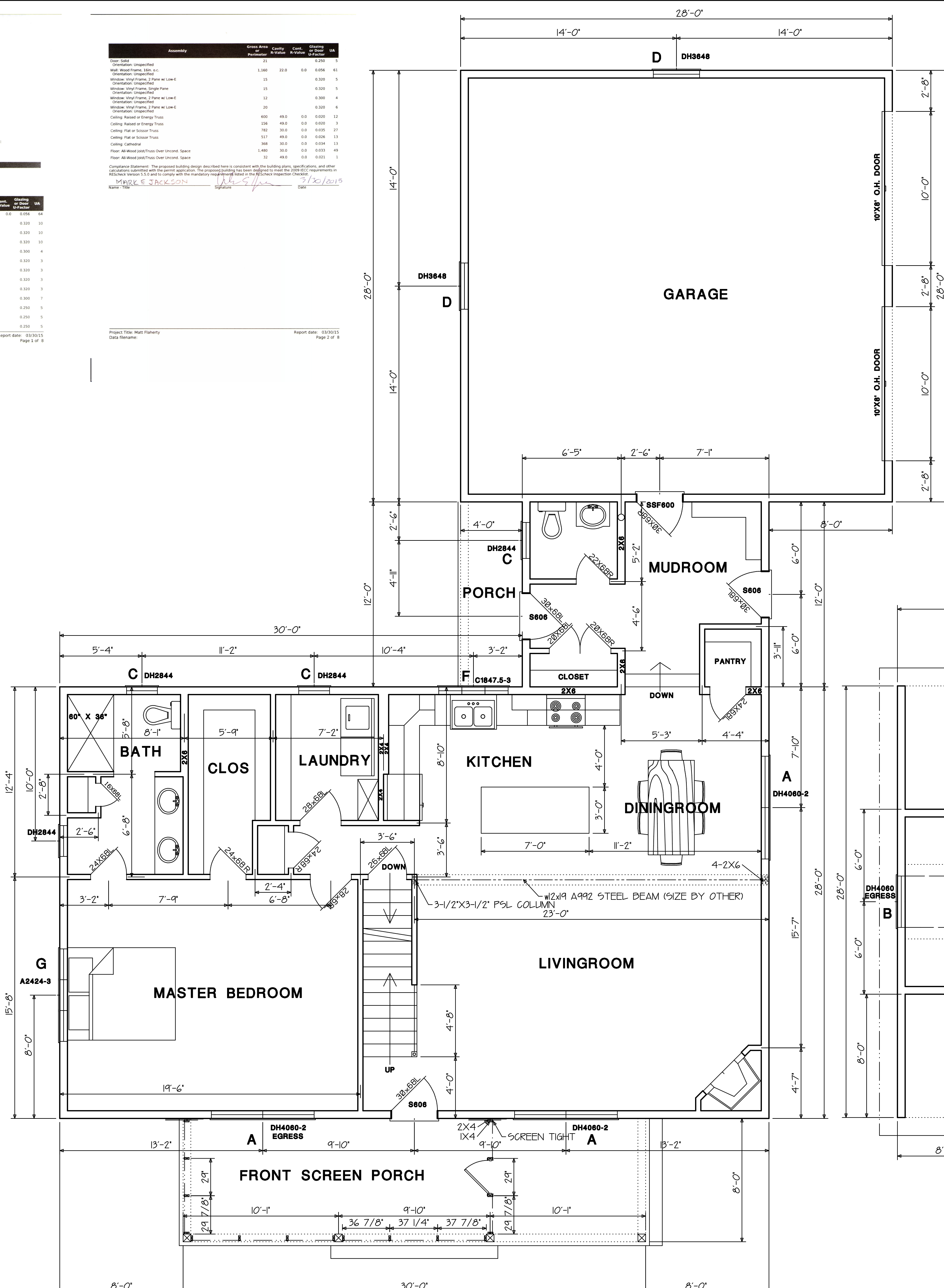
Assembly	Area	U-Value	Req. U-Value	Pass/Fail
Window (Unparted)	1,160	2.0	0.0	0.000 1
Door (Unparted)	15	0.300	0.300	0.000 1
Roof (Unparted)	12	0.000	0.000	0.000 1
Foundation (Unparted)	30	0.000	0.000	0.000 1
Exterior Wall (Unparted)	400	0.000	0.000	0.000 1
Interior Wall (Unparted)	130	0.000	0.000	0.000 1
Floor (Unparted)	160	0.000	0.000	0.000 1
Basement Floor (Unparted)	117	0.000	0.000	0.000 1
Basement Ceiling (Unparted)	1,480	0.000	0.000	0.000 1
Floor Above (Unparted)	32	0.000	0.000	0.000 1

Envelope Assemblies

Assembly	Area	U-Value	Req. U-Value	Pass/Fail
Roof (Unparted)	1,160	2.0	0.0	0.000 1
Window (Unparted)	30	0.300	0.300	0.000 1
Door (Unparted)	15	0.300	0.300	0.000 1
Roof (Unparted)	12	0.000	0.000	0.000 1
Foundation (Unparted)	30	0.000	0.000	0.000 1
Exterior Wall (Unparted)	400	0.000	0.000	0.000 1
Interior Wall (Unparted)	130	0.000	0.000	0.000 1
Floor (Unparted)	160	0.000	0.000	0.000 1
Basement Floor (Unparted)	117	0.000	0.000	0.000 1
Basement Ceiling (Unparted)	1,480	0.000	0.000	0.000 1
Floor Above (Unparted)	32	0.000	0.000	0.000 1

THIS INFORMATION IS PROVIDED TO OUR CUSTOMERS AS A SERVICE OF MAINE RESIDENTIAL DESIGN. CUSTOMERS SHOULD APPRECIATE, HOWEVER, THAT THIS INFORMATION IS NOT THE PRODUCT OF ANY ARCHITECT, NEITHER MAINE RESIDENTIAL DESIGN OR ANY OF ITS EMPLOYEES ARE REGISTERED ARCHITECTS WITHIN THE STATE OF MAINE AND CUSTOMERS MAY WANT TO CONSULT WITH AN ARCHITECT BEFORE TAKING FINAL ACTION WITH REGARD TO ANY BUILDING OR STRUCTURE. CUSTOMERS SHOULD ALSO APPRECIATE THAT BY PROVIDING YOU WITH THIS INFORMATION MAINE RESIDENTIAL DESIGN DOES NOT GUARANTEE THE SOUNDNESS OR SUITABILITY OF THE INFORMATION FOR ANY PURPOSE OF THE CUSTOMER.

LOC	DOOR	DESCRIPTION	ROUGH OPENING	HEADERS
1	30X68	3'-0" X 6'-8" S606 IS,6-9/16JMB,FLAT CASE	3'-2-1/2" X 6'-10-1/2"	2-2X12 BOX
2	30X68	3'-0" X 6'-8" SSF600 IS,6-9/16JMB,FIRE RATED STEEL FRAME	3'-2-1/2" X 6'-10-1/2"	2-2X12 BOX
5	10X8 O.H.	10'-0" X 8'-0" OVERHEAD STEEL GARAGE DOOR	10'-0" X 8'-0"	3-2X12 BOX
6	28X68	2'-8" X 6'-8" 6 PANEL MOLDED 6-9/16 JMB	2'-10-1/2" X 6'-10-1/2"	2-2X12 BOX
8	26X68	2'-6" X 6'-8" 6 PANEL MOLDED 4-9/16 JMB	2'-8-1/2" X 6'-10-1/2"	2-2X12 BOX
9	24X68	2'-4" X 6'-8" 6 PANEL MOLDED 4-9/16 JMB	2'-6-1/2" X 6'-10-1/2"	2-2X12 BOX
10	22X68	2'-2" X 6'-8" 6 PANEL MOLDED 4-9/16 JMB	2'-4-1/2" X 6'-10-1/2"	2-2X12 BOX
11	16X68	1'-6" X 6'-8" 6 PANEL MOLDED 4-9/16 JMB	1'-8-1/2" X 6'-10-1/2"	2-2X12 BOX
13	40X68	4'-0" X 6'-8" 6P MR/MRS MOLDED 4-9/16 JMB	4'-2-1/2" X 6'-10-1/2"	2-2X12 BOX



MAINE RESIDENTIAL DESIGN	FILE NAME
CASCO, ME. 207-627-3362	A2 OF 9
JOB: MATT FLAHERTY VER 2	SCALE: 1/4"=1'-0"
DISCIPLINE: PRELIMINARY	DATE: 2/18/2015
	DRAWN BY: MEJ
	APPROVED: