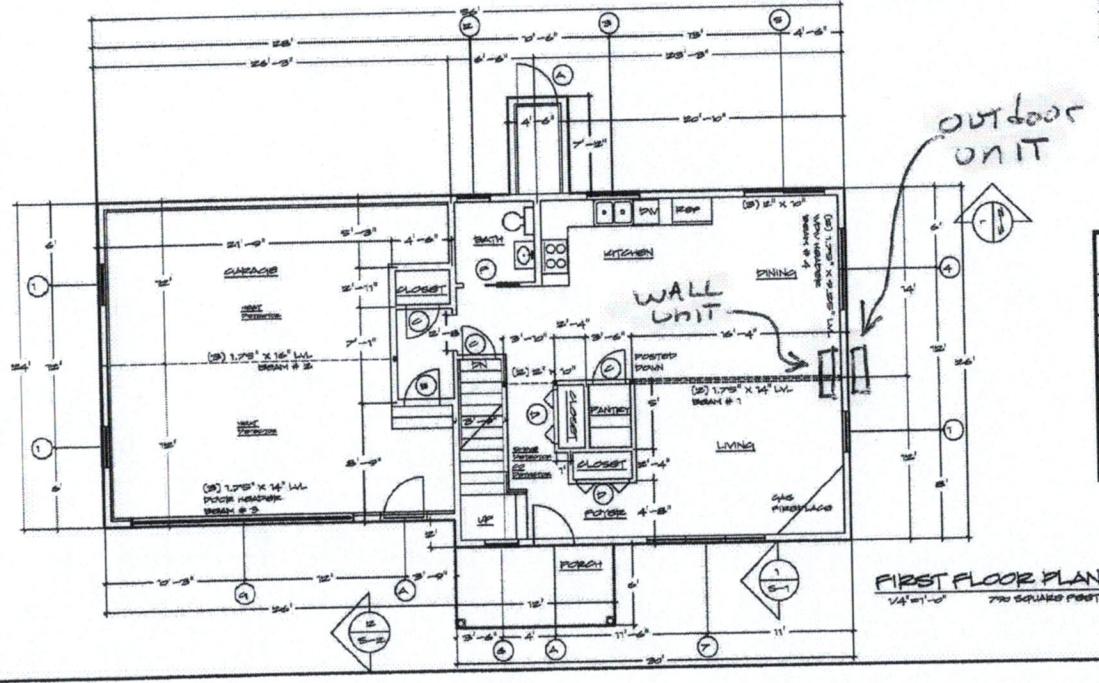
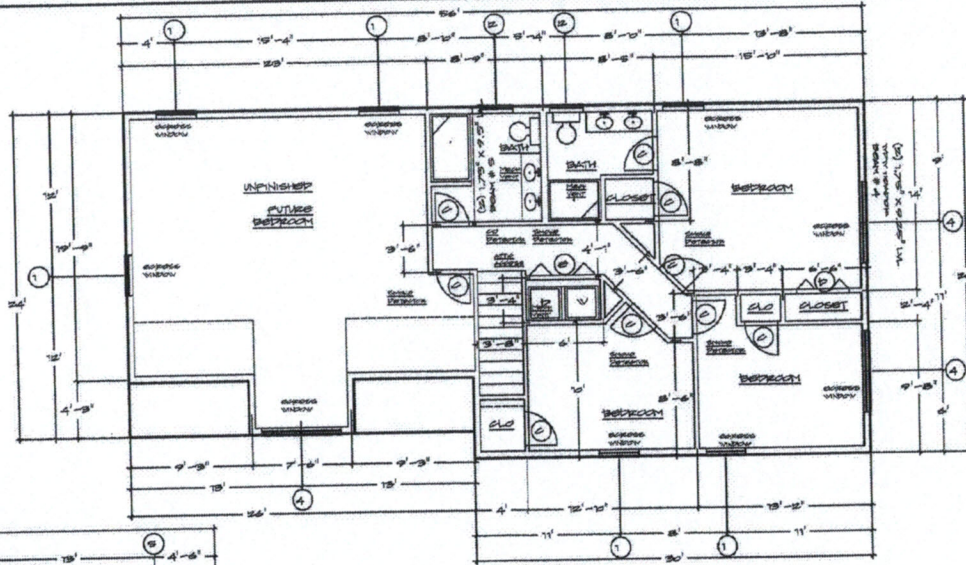


# SCOTT CURLISS

WINDOW SCHEDULE			
NO.	QTY	DESCRIPTION	ROUGH OPENING
1	4	DOUBLE HUNG WINDOW # 3000	3'-0" X 6'-0"
2	3	DOUBLE HUNG WINDOW # 3045	3'-6" X 4'-0"
3	1	CASEMENT # 4042-2	4'-0" X 3'-6"
4	4	DOUBLE HUNG WINDOW # 3500-2	6'-0" X 6'-0"
5	1	SLIDING GLASS PATIO DOOR	6'-0" X 6'-6"
6	1	ANNING # 3030	2'-6" X 2'-6"
7	1	DOUBLE HUNG WINDOW # 3500-3	4'-0" X 6'-0"
8	2	DOUBLE HUNG WINDOW # 3000	3'-0" X 3'-0"

ALL ROUGH OPENING DIMENSIONS TO BE VERIFIED WITH MANUFACTURERS MODEL PRIOR TO ROUGH FRAMING

ALTERNATE WINDOW MANUFACTURERS REQUIRED TO SATISFY ENERGY REQUIREMENTS PER INTERNATIONAL RESIDENTIAL CODE



DOOR SCHEDULE			
NO.	QTY	DESCRIPTION	DOOR SIZE
A	2	EXT INSUL ENTRY DOOR	3'-0" X 6'-6"
B	1	EXT INSUL ENTRY FIRE RATED	3'-0" X 6'-6"
C	2	INTERIOR DOOR	2'-6" X 6'-6"
D	2	INTERIOR DOOR SWEEPING	4'-0" X 6'-6"
E	1	INTERIOR DOOR SWEEPING	5'-0" X 6'-6"
F	1	INTERIOR DOOR POCKETED	2'-6" X 6'-6"
G	1	OVERHEAD GARAGE DOOR	16'-0" X 7'-0"

RDI

---

**RESIDENTIAL DESIGN INC**

DESIGNERS  
CONSULTANTS  
CONSTRUCTION DRAWINGS

P.O. BOX 67  
CONANT, NH 03048  
603-425-0501  
WWW.RDIDESIGN.COM

---

**AI** AMERICAN INSTITUTE OF BUILDING DESIGN NORTHWEST

---

**PROJECT**

FALMOUTH FORESIDE LLC  
SINGLE FAMILY HOME  
24 HAVERTY'S WAY  
PORTLAND, ME

---

**SHEET TITLE**

FLOOR PLANS

---

**DATE**

6-24-2016

---

**REVISIONS**

10-11-2016

---

**SHEET NUMBER**

A-2